



**CITY OF KIRKLAND**  
**Department of Parks & Community Services**  
123 Fifth Ave, Kirkland, WA 98033 · 425.587.3300  
[www.kirklandwa.gov](http://www.kirklandwa.gov)

---

## **MEMORANDUM**

**To:** Kurt Triplett, City Manager

**From:** Lynn Zwaagstra, Director, Parks and Community Services  
John Lloyd, Deputy Director, Parks and Community Services

**Date:** February 15, 2024

**Subject:** Automated External Defibrillators (AEDs) in Parks

## **RECOMMENDATION**

That City Council receives an update about installing publicly accessible Automated External Defibrillators (AEDs) in parks and approves the attached fiscal note authorizing the use of King County EMS grant funds and Fire Proposition 1 reserves to install AEDs in certain parks. This update is a follow up to Legislative Request Memorandum (LRM) #LRM060623D<sup>1</sup>.

By acting on the consent calendar, the Council is approving the fiscal note.

## **BACKGROUND DISCUSSION**

In the Summer of 2023, the City Council requested staff prepare an LRM regarding the potential installation of publicly accessible AEDs at active recreation sites around the City, including outdoor locations. Staff presented this LRM at the August 2, 2023 City Council meeting, at which time, City Council directed staff to proceed with the recommended analysis, beginning after the November 2023 election. However, City Council also directed staff to install an AED at the newly renovated 132<sup>nd</sup> Square Park as soon as possible. Staff evaluated possible installation and security options, identified potential installation locations throughout the park system for future AED placement, and conducted a review of similar installations throughout the City.

There is an obvious public benefit to placing AEDs in parks, as early access to AEDs can save lives. Publicly accessible AEDs ensure access to defibrillation as quickly as possible as it is not always possible for EMTs or paramedics to respond within the first five minutes after cardiac arrest. However, just as there are considerable benefits to having AEDs in publicly accessible locations, there are some operational concerns that must be addressed, including theft, vandalism, inspections, maintenance, budgeting for replacement equipment, and tracking the expiration date of the AED components (batteries and electrodes).

To better understand how others have addressed these concerns, staff consulted with representatives from Woodinville, King County Public Health, and King County Parks. Additionally, staff sought additional information through the National Recreation and Parks Association (NRPA). Unsurprisingly, there is no standard for this type of installation. NRPA

---

<sup>1</sup> [https://www.kirklandwa.gov/files/sharedassets/public/v/1/city-council/agenda-documents/2023/august-2-2023/8a2\\_business.pdf](https://www.kirklandwa.gov/files/sharedassets/public/v/1/city-council/agenda-documents/2023/august-2-2023/8a2_business.pdf)

members use several different methods when providing AEDs in park spaces. Some bring AEDs on site when fields are in use, some provide verified field users access to locked storage rooms with an AED, some use basic AED cabinets, while others have installed specialized cabinets designed to protect AEDs from weather and theft. Locally, the AED adjacent to the Woodinville Sports Fields complex is installed in a basic AED cabinet with no monitoring minimal security features (only a local alarm that sounds when opened). Woodinville staff indicated they were concerned about theft when it was initially installed, but the AED has been installed for a couple years without issue. Laura Miccile, the CPR/Public Access Defibrillator Program Manager for King County Public Health provided additional insights and contacts. She works with Project 100<sup>2</sup>, a collective effort of volunteer medical professionals and other community leaders. Their mission is to place an AED in outdoor spaces used for sports and recreation, with the goal of 100% of athletic fields having an AED installed. She provided contacts with King County Parks, as they are also planning to install publicly accessible AEDs in parks.

Ultimately, staff identified and selected SaveStation<sup>3</sup> to provide a turnkey solution that addresses the concerns listed above. The cabinet selected not only protects the AED from the rain/snow, it also has a heater to keep it warm in the winter and a ventilation fan to cool it in the summer. The cabinet has security features you would expect to find in a standard AED cabinet, including a local alarm and flashing LED lights. In addition to these basic features, the SaveStation cabinet also takes photos whenever the cabinet is opened, or the AED is removed. Finally, the SaveStation cabinet physically monitors the presence of the AED, greatly reducing the need for staff to verify the AED has not been stolen and is actually available and ready for use. In addition to tracking the presence of the AED, the SaveStation cabinet connects to an online system that tracks the expiration date of the batteries and electrodes of the AED (in addition to several other features) and can be configured to send email and text message alerts for dozens of different triggers. Currently, the system at 132<sup>nd</sup> Square Park is configured to send an alert to Parks and Community Services staff whenever the cabinet is opened, if the AED is removed, or if the system loses communication with the cabinet. A similar SaveStation cabinet was installed at the Starfire Sports Complex in Tukwila. On June 4, 2022, thanks to the AED installed in a SaveStation cabinet, a 13-year-old girl's life was saved after she collapsed due to cardiac arrest while playing soccer<sup>4</sup>.

The SaveStation cabinet installed at 132<sup>nd</sup> Square Park is a wall mount option. A free standing "tower" option is also available and may be needed in certain locations, if there is not a suitable installation location available. The wall mounted cabinet costs \$2,875 (plus tax and shipping) while the tower option costs \$5,025 (plus tax and shipping). The tower option would likely require additional electrical work to pull power to the unit, and depending on the location, it may also require a concrete pad. SaveStation indicated they anticipate a slight increase in prices in the near future but have not released updated pricing. The purchase price includes four years of cellular service and access to the monitoring software. Currently, a four-year renewal of this service costs \$500, but may increase over time. The AED selected has a retail price of \$2,144 (plus tax and shipping) but is often available for a lower price. Staff purchased the AED for 132<sup>nd</sup> for \$1,644 because it was on sale. Additional supplies and signage for each installation costs approximately \$250, depending on the exact items required. All in, each wall mounted AED cabinet can be installed for approximately \$6,000. The Tower option would cost approximately \$8,250 plus any electrical and other installation costs.

---

<sup>2</sup> <https://joinproject100.org/>

<sup>3</sup> <https://savestation.ca/>

<sup>4</sup> <https://savestation.ca/save-in-tukwila-wa/>

City Council expressed some interest in an AED check-out model as an alternative to permanently installing AEDs in parks. This option would take additional staff capacity to manage and has limited benefit compared to installing AEDs in parks as it only serves the group with the AED at the time, not general park users. Staff do not recommend pursuing a check out option. If providing AEDs to field user groups is desired, City Council could establish an AED grant program that would provide funding to purchase their own AED.

**Installation Options**

Staff understood City Council to request a proposal for installing AED’s at community parks and parks with athletic fields. City parks with athletic fields include Crestwoods Park, Juanita Beach Park, Everest Park, Peter Kirk Park, Highlands Park, Spinney Homestead, and Terrace Park. Community parks without athletic fields include Edith Moulton, Heritage Park, McAuliffe Park, Totem Lake Park, and Marina Park. Of those community parks without athletic fields, 3 parks have active amenities: Heritage Park, Totem Lake Park, and Marina Park. Two community parks are more natural spaces that do not contain traditional active amenities, those are Edith Moulton and McAuliffe Park.

In addition to the parks listed above, parks with other active recreation spaces, such as basketball courts, tennis or pickleball courts, volleyball courts, etc. are good candidates for AEDs as well. Parks with active spaces not already listed above with athletic fields include Doris Cooper Houghton Beach Park, Forbes Creek Park, Mark Twain Park, North Kirkland Community Center Park, South Rose Hill Park, and Van Aalst Park.

**RECOMMENDATION**

Staff recommend proceeding with the AED installation at City parks with athletic fields, followed by selected community parks with active recreation spaces. If a phased approach is recommended, staff would prioritize installation in the order shown in Tables 1 and 2 below.

**Table 1: First Priority Parks for AED Installation**

Priority	Park	Justification	Cabinet Type	Cost (including AED)
1	Crestwoods Park	Athletic Fields, Sport Courts	Wall Mount	\$6,000
2	Everest Park	Athletic Fields, Sport Courts	Wall Mount	\$6,000
3	Juanita Beach Park (North)	Athletic Fields, Sport Courts	Freestanding Tower	\$8,250*
4	Peter Kirk Park	Athletic Fields, Sport Courts	Wall Mount	\$6,000
5	Spinney Homestead	Athletic Fields	Freestanding Tower	\$8,250*
6	Terrace Park	Athletic Fields, Sport Courts	Freestanding Tower	\$8,250*
7	Highlands Park	Athletic Fields, Sport Courts	Freestanding Tower	\$8,250*
8	Marina Park	Community Park	Wall Mount	\$6,000
9	Heritage Park	Sport Courts	Freestanding Tower	\$8,250*

10	Totem Lake Park	Community Park	Wall Mount	\$6,000
<b>TOTAL:</b>				<b>\$71,250*</b>

\*Plus any additional electrical/installation work required to pull power and mount the tower.

**Table 2: Second Priority Parks for AED Installation**

Priority	Park	Justification	Cabinet Type	Cost (including AED)
1	Doris Cooper Houghton Beach Park	Sport Court	Wall Mount	\$6,000
2	Forbes Creek Park	Sport Courts	Freestanding Tower	\$8,250*
3	Mark Twain Park	Sport Court	Freestanding Tower	\$8,250*
4	North Kirkland Community Center	Sport Court	Wall Mount	\$6,000
5	South Rose Hill Park	Sport Court	Wall Mount	\$6,000
8	Van Aalst Park	Sport Court	Freestanding Tower	\$8,250*
<b>TOTAL:</b>				<b>\$42,750</b>

\*Plus any additional electrical/installation work required to pull power and mount the tower.

A map of each park and the proposed location for AED installation can be found in **Attachment A**.

To support this initiative, the City requested funding from the King County EMS BLS Core Services fund. The BLS Core Services program provides funding to help cover unanticipated costs that cannot be accommodated within an agency's current budget. Funds may be used for expenditures related to operations, capacity and/or equipment that are incurred outside standard or planned operations. The City has been awarded \$71,250 to cover the first priority parks listed in Table 1 above. This funding is included in the fiscal note in **Attachment B**.

Since \$72,000 in grant funding was acquired, staff recommend completing the installation at the second priority parks, listed in Table 2 using \$42,750 of 2020 Fire Proposition 1 fund balance to fund the remaining AED investments. Fire Proposition 1 authorized expanded fire and emergency medical services and improved response times. Adding AEDs in parks helps implement the goals of Fire Proposition 1 by extending emergency services to more locations in Kirkland and increasing the odds of survival until Firefighters/EMTs arrive on scene. The current fund balance of Fire Proposition 1 is approximately \$2.7 million dollars. These revenues are intended to be programmed as part of the 2025-2026 budget process for public safety but there is sufficient balance to fund the remaining second priority AED investments in 2024.

**NEXT STEPS**

Council funds all first and second priority AED installations through approving the attached fiscal note by acting on the consent calendar. If Council approves the consent calendar, both priorities are funded and no further action is taken. If Council prefers not to fund the second priority projects, Council should remove this item from consent and give further direction.

**Attachment A:** Proposed AED Installation Locations  
**Attachment B:** Fiscal Note

Attachment A – Proposed AED Installation Locations

Crestwoods Park



Peter Kirk Park



Everest Park



Juanita Beach Park



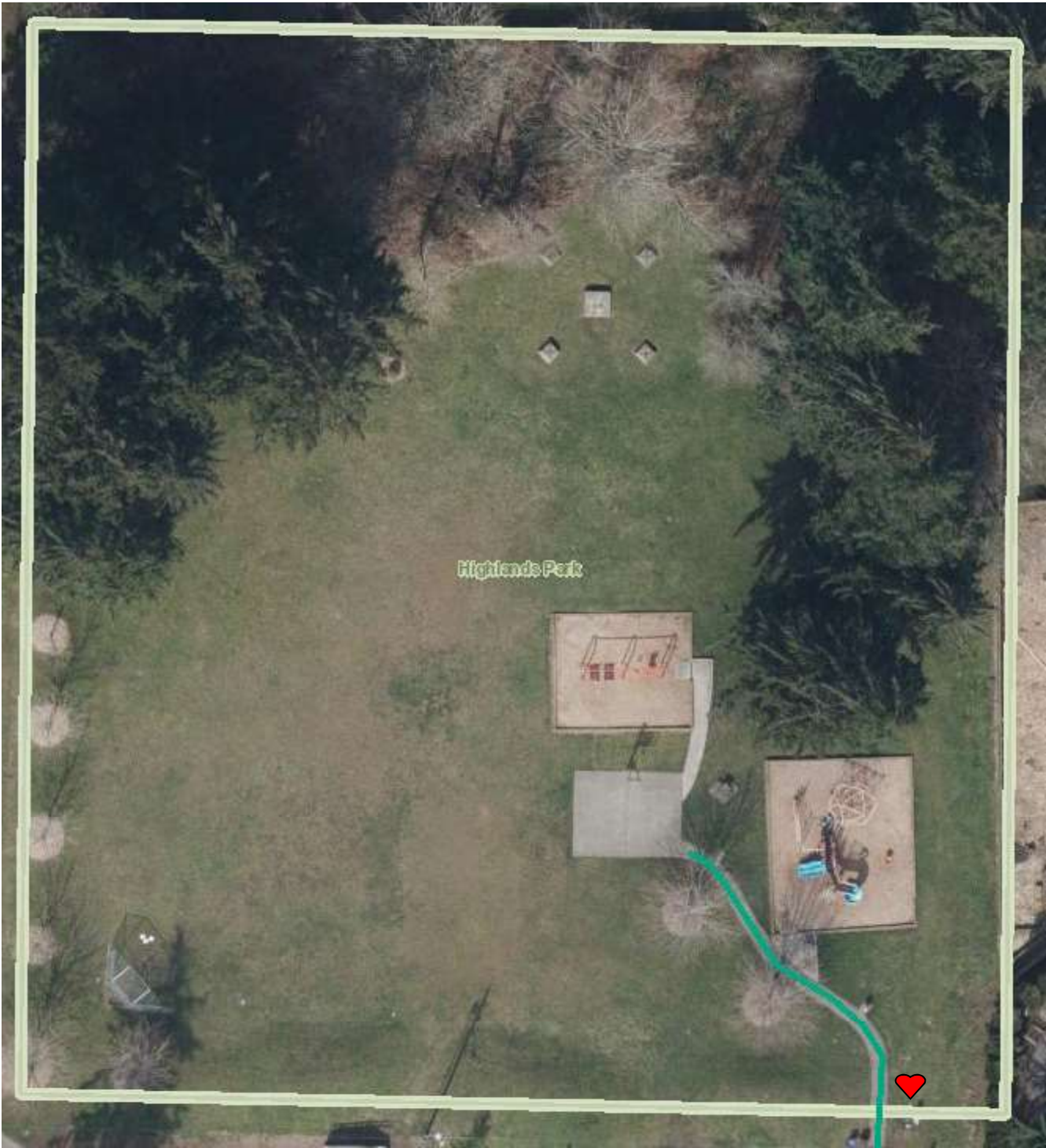
**Spinney Homestead**



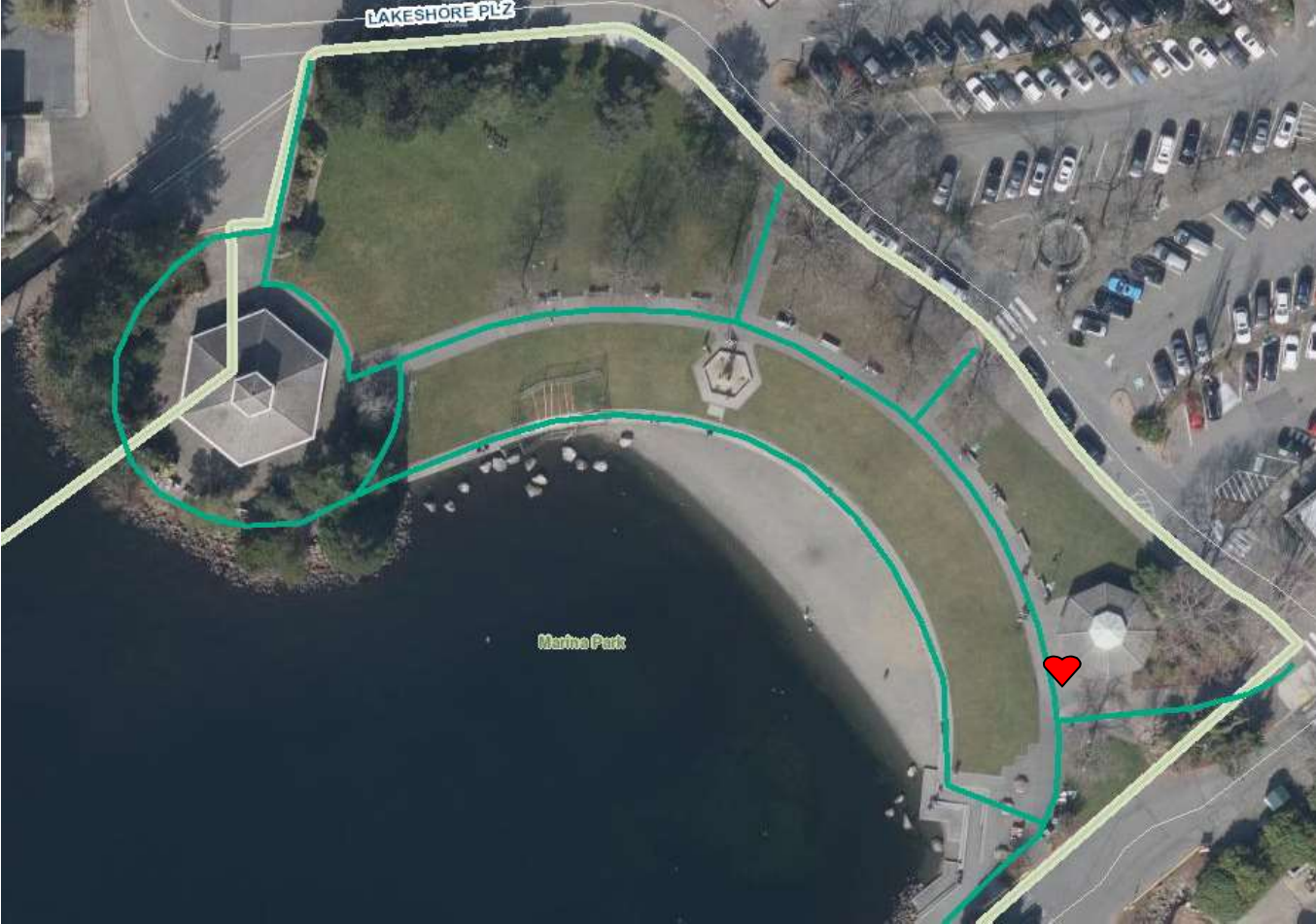
Terrace Park



Highlands Park



Marina Park



Heritage Park



Totem Lake Park



## Doris Cooper Houghton Beach Park

- Staff recommend installing a wall mount cabinet on restroom building once it is completed. Exact location TBD

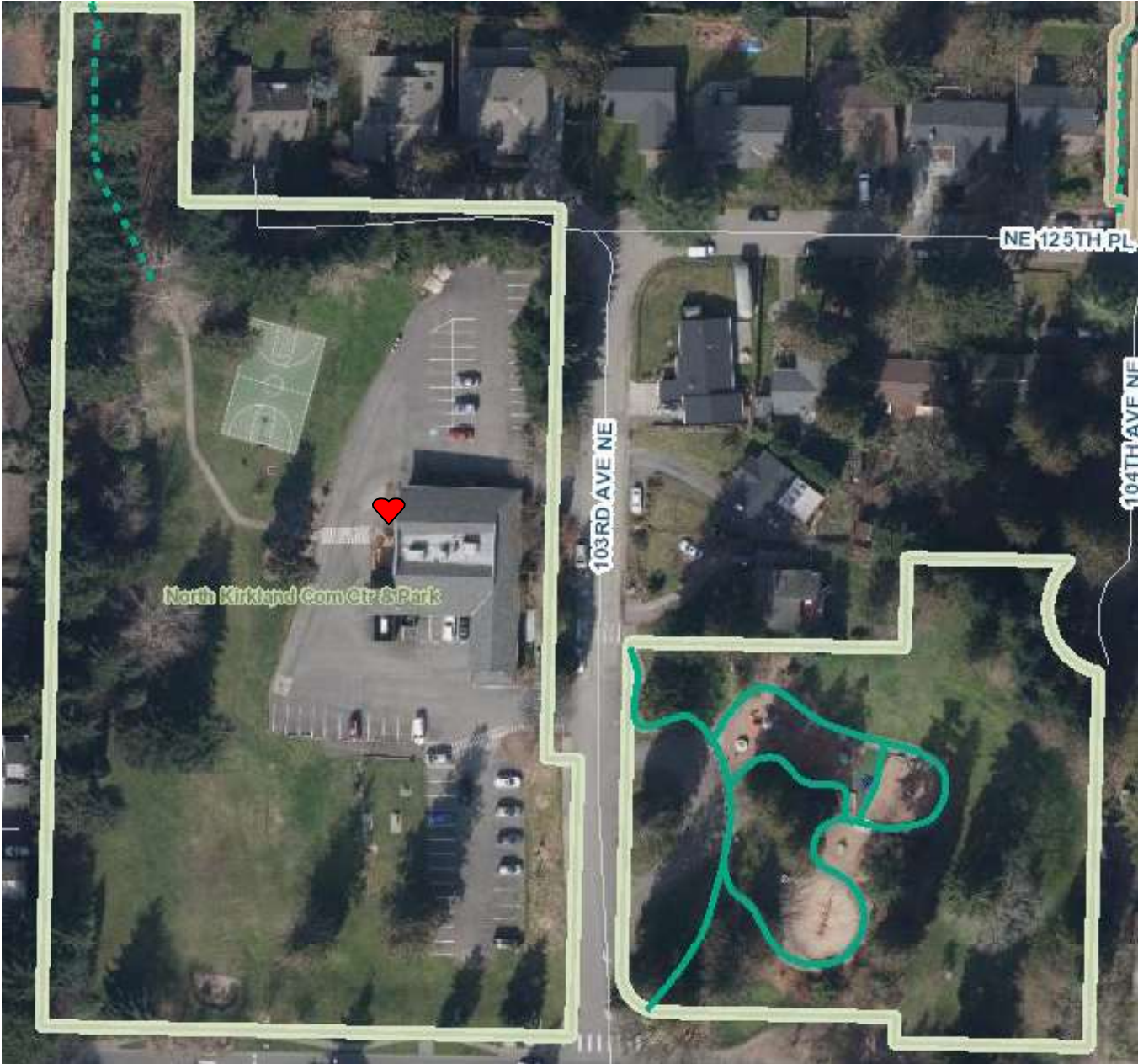




Mark Twain Park



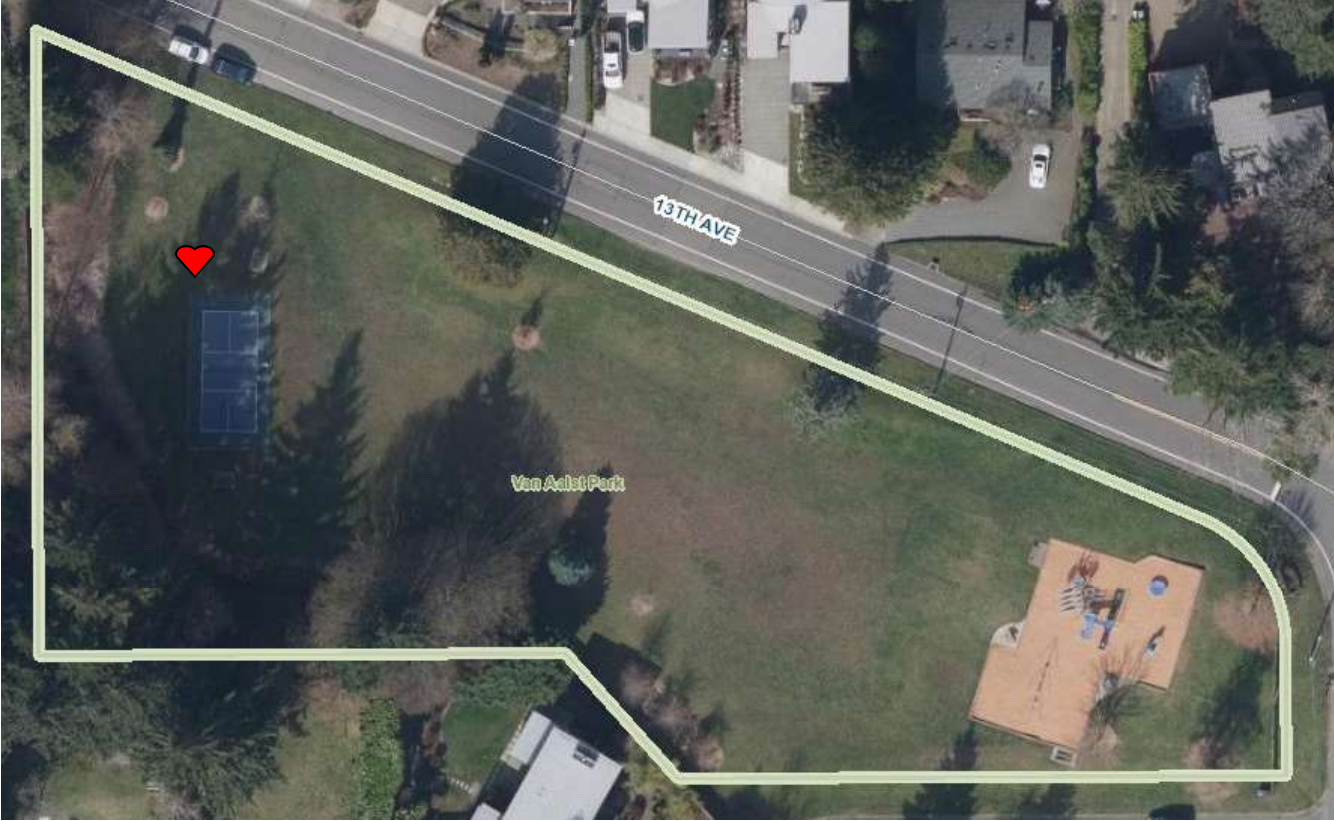
North Kirkland Community Center Park



**South Rose Hill Park**



Van Aalst Park



**FISCAL NOTE**

**CITY OF KIRKLAND**

Source of Request							
Lynn Zwaagstra, Director, Parks and Community Services							
Description of Request							
Recognize new grant revenue from the King County EMS BLS Core Services fund for the installation of Automated External Defibrillators (AEDs) in 1st priority city parks (\$71,250). One-time use of 2020 Fire Proposition 1 fund balance for the installation of AEDs in 2nd priority city parks (\$42,750).							
Legality/City Policy Basis							
Fiscal Impact							
If council approves AED installations in 1st priority parks, \$71,250 in King County EMS BLS revenue will be recognized. If council approves AED installations in 2nd priority parks, \$42,750 will be allocated from the 2020 Fire Prop 1 fund balance (beginning 2024 balance of \$2,734,095).							
Recommended Funding Source(s)							
Reserve	Description	2024 Est End Balance	Prior Auth. 2023-24 Uses	Prior Auth. 2023-24 Additions	This Request	Revised 2024 End Balance	2024 Target
Revenue/Exp Savings	King County EMS BLS Core Services grant (\$71,250)						
Other Source	2020 Fire Prop 1 fund balance (01019580-599000, FDTPROPONE) (\$42,750)						
Other Information							

Prepared By	Andrea Peterman, Senior Financial Analyst	Date	February 22, 2024
-------------	-------------------------------------------	------	-------------------