



CITY OF KIRKLAND

Public Works Department

123 Fifth Avenue, Kirkland, WA 98033 425.587.3800

www.kirklandwa.gov

MEMORANDUM

To: Kurt Triplett, City Manager

From: Anneke Davis, P.E., Senior Project Engineer
Rod Steitzer, P.E., Capital Projects Manager
Julie Underwood, Public Works Director

Date: February 18, 2021

Subject: PUBLIC ART FOR JUANITA BEACH BATHHOUSE (CPK 1190 100)

RECOMMENDATION:

Staff recommends that the City Council approves *Now and Then*, by UrbanRock Design of Los Angeles, California, as the selected art concept for the Juanita Beach Bathhouse Project. *Now and Then* has been reviewed and recommended by City staff, the Cultural Arts Commission, and the Park Board. If the Council concurs with the recommendation, it should adopt a motion to approve *Now and Then* as the selected art for the Juanita Beach Bathhouse project.

BACKGROUND DISCUSSION:

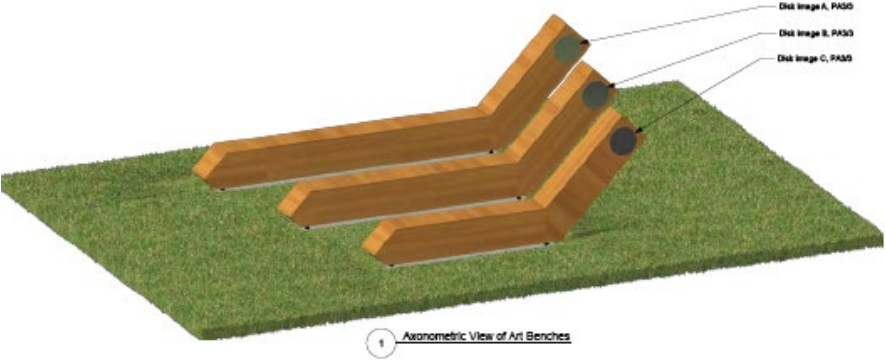
This project is consistent with the City of Kirkland's 1% for Public Art Guidelines, in which eligible capital improvement projects will devote a minimum of 1% of the project budget on public art. The City's art guidelines, adopted by resolution R-5213, further state that for public art that is sited in a park, both the Cultural Arts Commission and the Park Board must make a recommendation to City Council. The project set aside \$29,150 of the project budget (based on the original 2019 – 2024 CIP) for the selection of an artist and the procurement and installation of art.

The Project team and the Cultural Arts Commission together established an art committee for Juanita Beach Bathhouse. The art committee is comprised members from the Cultural Arts Commission, the Park Board, Parks and Community Services, and the project team.

The Committee selected UrbanRock Designs to serve as the artist for both the Edith Moulton Park project and Juanita Beach Park. Through work with the committee to develop art for Juanita Beach Park that is both interactive and consistent with the history of Juanita Beach Park, UrbanRock developed *Now and Then* which consists of two distinct, but related art elements.

The two elements of *Now and Then* include seating elements that represent the area's timber-rich landscape, and metal image disks that translate historic photos of the site's past.

The three timber benches refer to the sawmill past of the Park, provide a seating element. See Figure 1. In addition, each bench holds an image portraying the lumber industry. These include an image of hauling shingles, shingle sawyers, and a logging crew. See Figure 2. These benches will be located between the existing oak tree and the new playground. See Figure 3.



1 Axonometric View of Art Benches

Figure 1 Three Timber Benches



Figure 2 Historical lumber-related Images Embedded in Timber Benches

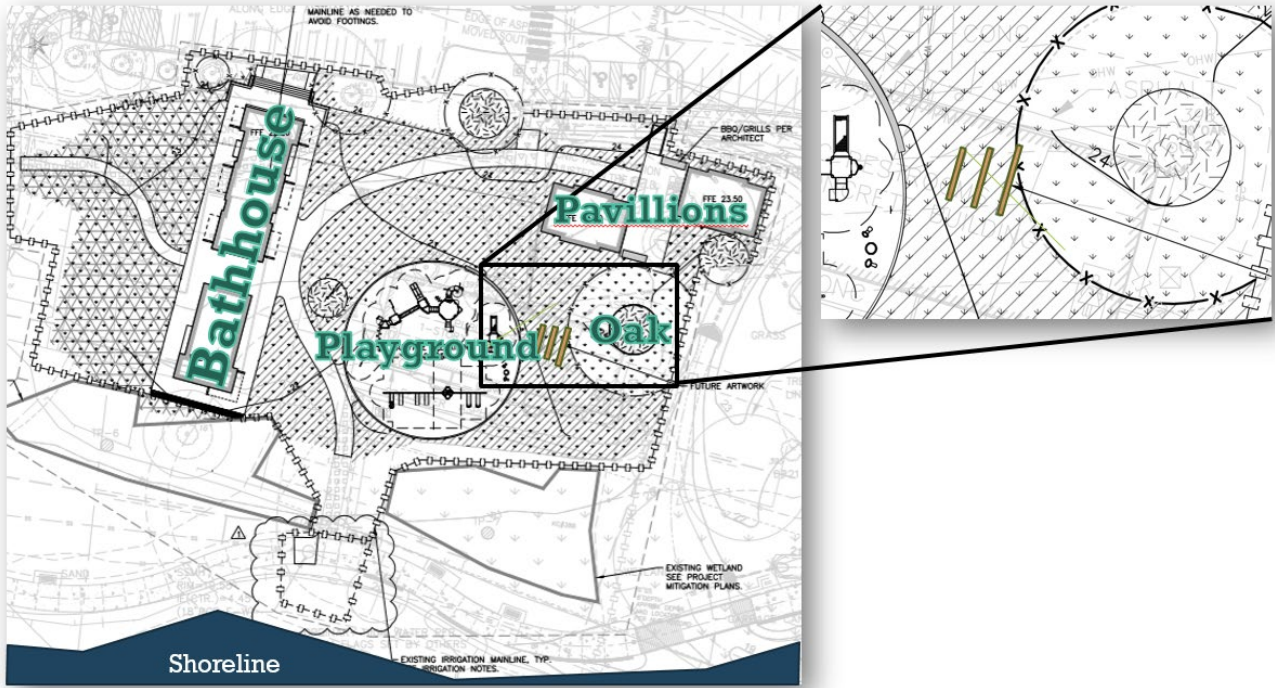


Figure 1 Location of Three Timber Benches

The second art element is four image disks, serving as “portals to the past,” (see Figure 4) installed along the railing of the dock (see Figure 5), providing two views back to the Park and two views over the water (see Figure 6). These image disks are cut out of aluminum and feature historic scenes of Juanita Beach Park. The images bring a historical context to the park through the use of photos and ties in with the existing public art at Juanita Beach (a rock structure which frames the view of the water). The disks are 24” diameter and are fixed to the top of the railing to allow Park visitors to observe the shoreline and water recreation of the past at Juanita Beach. The historical images, procured from the Kirkland Heritage Society, include the bathhouse in 1935, the swimming dock, Juanita Beach Cabins, and kayak rentals.

At its January 21, 2021 meeting, the Cultural Arts Commission voted unanimously to recommend that City Council accept *Now and Then* for Juanita Beach Park. At its February 10, 2021 meeting the Park Board voted to recommend that City Council accept *Now and Then*.

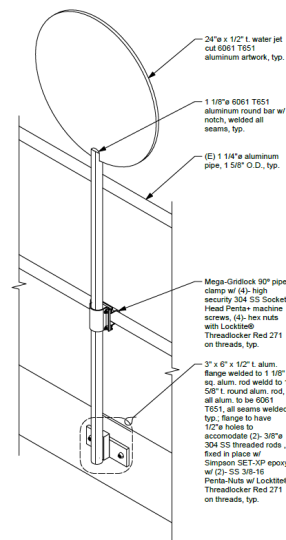


Figure 2 Historical Images of Juanita Beach Park

Figure 3 Installation of Images along Railing

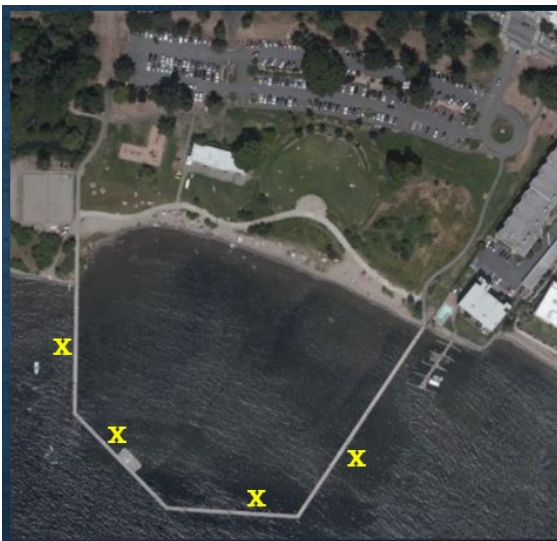


Figure 4 Installation Location Along Railing

Budget

The original art budget (based on the 2019 – 2024 CIP) was \$29,150. The final cost for this art is anticipated to be \$33,550. This was made possible due to the reallocation of the art budget for Waverly Beach Park to Juanita Beach Bathhouse and Edith Moulton Park.

Schedule

If the Council accepts the recommendation of the staff, Cultural Arts Commission and the Park Board, the Council should adopt a motion to approve *Now and Then* as the selected 1% for the arts project for the Juanita Beach Bathhouse replacement.

With City Council approval of the art concept, the artist will begin fabrication of the sculptures, with an anticipated delivery and installation in late spring 2021. The artist is also installing the art for Edith Moulton Park at the same time.