

## Attachment B: TSP Project Scenarios

The scenarios include:

1. Top Scoring Overall: Projects were scored [based on measures linked to the 10 TSP goals](#). This scenario sorts projects from the top down by score overall.
2. Top Scoring By Category: This scenario looks at projects that scored in the top within each scoring category. There were no projects that had the highest score in more than 5 of the 10 categories. To further narrow this list, as some categories had many projects with the same score, the total overall score was used as a secondary criteria.

**Transportation Strategic Plan (TSP) Project List**  
**Scenario 1 - Top Scoring (by total score)**

Count	PMX_ID	Project_Title	Street	Start_W_S	End_E_N	Project Type	Description	Cost_LowEstimate	Cost_HighEstimate	Total Score_All Categories
1	CIP_NMC1580000	6th and NE 85th St Protected Intersection	6th St	NE 85th St	<Null>	Active Transportation - Intersection/ Crossing Improvements	6th and NE 85th St Protected Intersection. Striping, signalization changes, and protection islands at the interesection for sidewalks and raised protected bike lanes on NE 85th St Station Area Plan Scope P5	\$ 251,000.00	\$ 362,000	280
2	SAP_COK_P11	NE 85th St/ 124th Ave NE intersection improvements	NE 85th St	124th Ave NE	<Null>	Active Transportation - Intersection/ Crossing Improvements	Protected intersection including safety improvements for walking and bicycling, included as part of Station Area Plan Scope 4	\$ 96,491.00	\$ 139,364	280
3	SP_23	100th Ave NE Multimodal Improvements - Phase 2 (NE 132nd - NE 139th)	100th Ave NE	NE 132nd St	NE 139th St	Roadway - Multimodal	Roadway improvements along 100th Ave NE to address the current 5-lane to 2-lane transition. This and other elements of the ultimate project will, at a minimum, provide for protected bicycle lanes, a center turn lane where appropriate, sidewalks, curb and gutter, illumination improvements and storm drainage system upgrades.	\$ 27,133,000.00	\$ 39,192,000	270
4	SRTS_JN07	NE 120th Pl/ NE 122nd St crossing improvements	NE 120th Pl	NE 122nd St	<Null>	Active Transportation - Intersection/ Crossing Improvements	Enhance crossing - Multi-lane Street	\$ 96,491.00	\$ 139,364	270
5	SAP_COK_4	124th Ave NE Widening (NE 85th St to NE 90th St)	124th Ave NE	NE 85th St	NE 90th St	Roadway - Multimodal	Widen roadway to five lane cross section from NE 85th St through the NE 90th St intersection, widened sidewalks and raised protected bike lanes from NE 84th Ln through NE 90th St intersection. Station Area Plan Scope 4	\$ 28,681,000.00	\$ 41,428,000	270
6	SAP_COK_5	NE 85th St/120th Ave NE intersection Modifications	NE 85th St	120th Ave NE	<Null>	Roadway - Multimodal Intersection Improvements	Revised signalization, added NB left turn lane, revised curb ramps, crosswalk striping for shared use paths. Station Area Plan Scope 5	\$ 700,000.00	\$ 1,011,000	260
7	ATP_Pri_3323	124th Ave NE Multimodal Improvements (NE 90th to 116th)	124th Ave NE	NE 90th St	NE 116th St	Active Transportation - Multimodal	Provide 80ft of right of way for center turn lane or landscaped median, one through lane each direction, protected bike lanes, wide landscape strips, sidewalks, and street lights on both sides of the street	\$ 6,140,437.00	\$ 8,869,504	260

**Transportation Strategic Plan (TSP) Project List**  
**Scenario 1 - Top Scoring (by total score)**

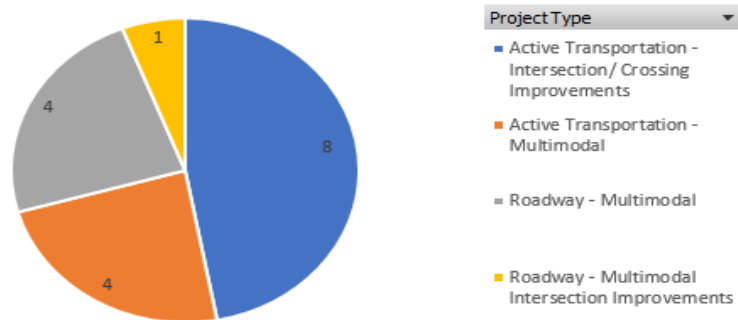
Count	PMX_ID	Project_Title	Street	Start_W_S	End_E_N	Project Type	Description	Cost_LowEstimate	Cost_HighEstimate	Total Score_All Categories
8	ATP_Cat_170	NE 128th St Multimodal Improvements (116th Way NE to Totem Lake Blvd)	NE 128th St	116th Way NE	Totem Lake Boulevard	Active Transportation - Multimodal	Add 2' buffers with pylons to the existing bike lanes with green pavement markings and move the eastbound bike lane to the south curb. At the NE 128th Street/116th Avenue NE intersection, add green bike boxes at the westbound approach in front of the shared through-left turn lane and right turn lane and at the northwest corner of the intersection in front of the crosswalk	\$ 279,771.00	\$ 404,144	260
9	SAP_COK_P2	NE 85th St/122nd Ave NE Protected Intersection	NE 85th St	122nd Ave NE	<Null>	Active Transportation - Intersection/ Crossing Improvements	Striping, signalization changes, and protection islands at the interesection for sidewalks and raised protected bike lanes on NE 85th St. Station Area Plan Scope P2	\$ 173,846	\$ 251,154	260
10	CIP_NMC1590000	6th and Kirkland Way Protected Intersection	6th St	Kirkland Way	<Null>	Active Transportation - Intersection/ Crossing Improvements	6th and Kirkland Way Protected Intersection. Striping, signalization changes, and protection islands at the interesection for sidewalks and buffered bike lanes on Kirkland Way. Station Area Plan scope P6	\$ 251,000.00	\$ 362,000	260
11	SRTS_JN02	NE 124th St/ 102nd Ln NE crossing improvements	NE 124th St	102nd Ln NE	<Null>	Active Transportation - Intersection/ Crossing Improvements	Enhance crossing - Multi-lane Street	\$ 96,491.00	\$ 139,364	250
12	SRTS_JN18	NE 124th St/ 105th Pl NE crossing improvements	NE 124th St	105th Pl NE	<Null>	Active Transportation - Intersection/ Crossing Improvements	Enhance crossing - Multi-lane Street	\$ 96,491.00	\$ 139,364	250
13	NE 132ND ST4204	NE 132nd St Multimodal Corridor (100th Ave NE to I-405) - west section	NE 132nd St	100th Ave NE	I-405	Roadway - Multimodal	Protected Bike Lanes. Perform sidewalk repairs. Implement transit signal priority and improved pedestrian crossing treatments	\$ 1,644,000.00	\$ 2,374,000	250
14	ATP_Pri_3082	NE 132nd St Multimodal Corridor (I-405 to 124th Ave NE) - mid section	NE 132nd St	I-405	124th Ave NE	Active Transportation - Multimodal	Protected Bike Lanes. Perform sidewalk repairs. Implement transit signal priority and improved pedestrian crossing treatments	\$ 3,977,000.00	\$ 5,744,000	250
15	Joel_P1	Kirkland Way Multimodal Corridor	Kirkland Way	6th St	NE 85th St	Roadway - Multimodal	Add buffered bike lanes and continous sidewalks from 6th St to NE 85th St. Will require widening or replacement of low clearance bridge of CKC, tree removal, and pipe structures. Included in Station Area Plan Scope 9	\$ 21,263,000.00	\$ 30,713,000	250

**Transportation Strategic Plan (TSP) Project List**  
**Scenario 1 - Top Scoring (by total score)**

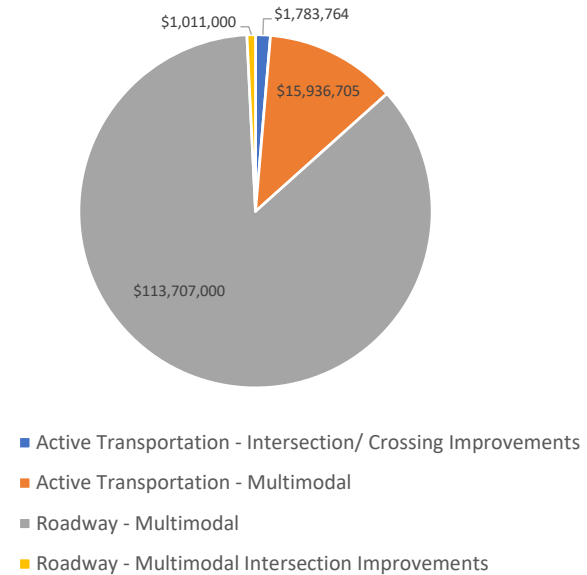
Count	PMX_ID	Project_Title	Street	Start_W_S	End_E_N	Project Type	Description	Cost_LowEstimate	Cost_HighEstimate	Total Score_All Categories
16	ATP_Cat_171	NE 128th St Multimodal Improvements (Totem Lake Blvd to 120th Ave NE)	NE 128th St	Totem Lake Boulevard	120th Ave NE	Active Transportation - Multimodal	Add raised protected bike lane at curbside level on north side, in-street with delineators on south side. Project will include moving bus stops and signal modifications. At the NE 128th St and 120th Ave NE intersections for the eastbound left turn, change signal phasing from permissive to protected-permissive with flashing yellow arrow.	\$ 636,271.00	\$ 919,057	250
17	StaffRec_4	Ped Crossing at Lake Washington Institute of Technology	132nd Ave NE	NE 116th St	<Null>	Active Transportation - Intersection/ Crossing Improvements	Add crosswalk and associated needed safety improvements such as lighting, median, and traffic control such as RRFB, or HAWK. Location may be adjusted to midblock considering sight distance requirements of the 132nd Ave NE curve.	\$ 173,846.00	\$ 251,154	250

**Total \$ 132,438,469**

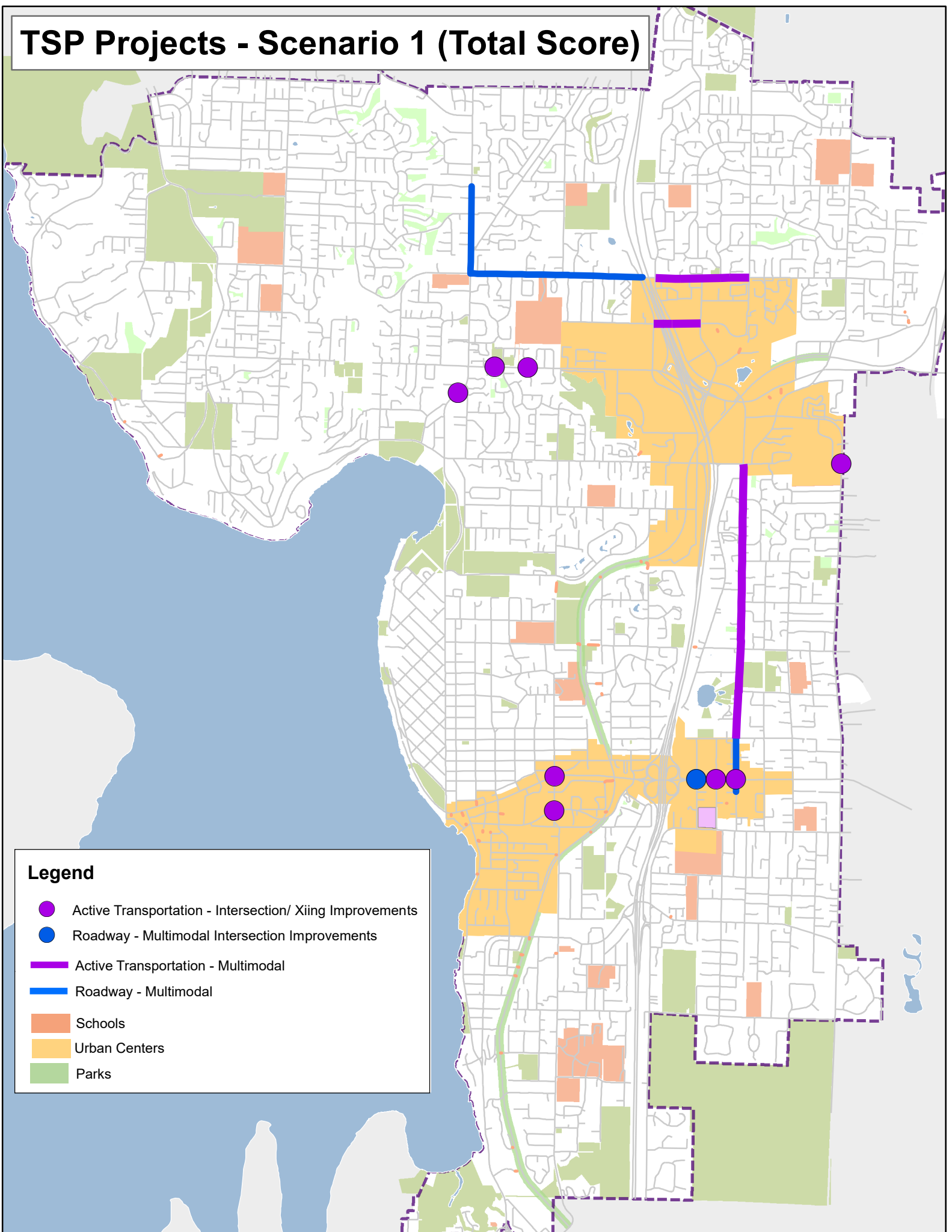
**Count of Project Type**



**Totals By Cost**



# TSP Projects - Scenario 1 (Total Score)



## Legend

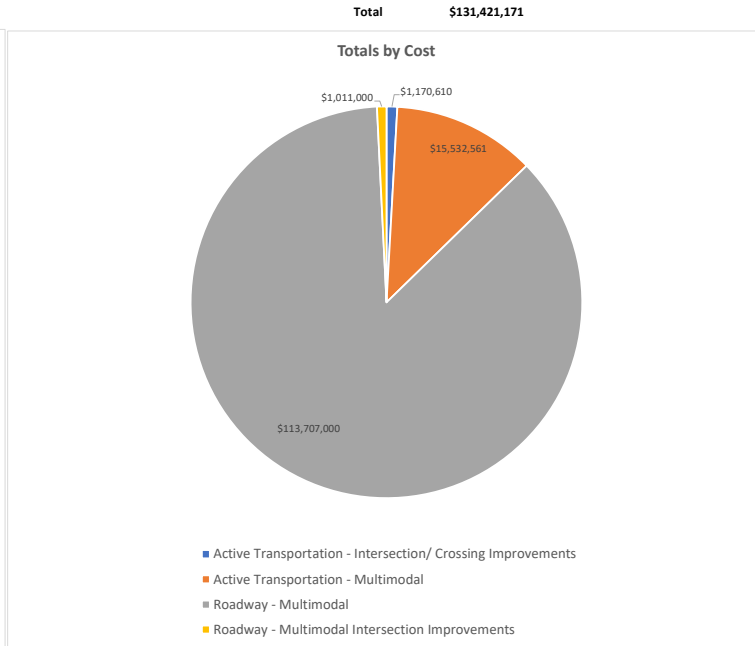
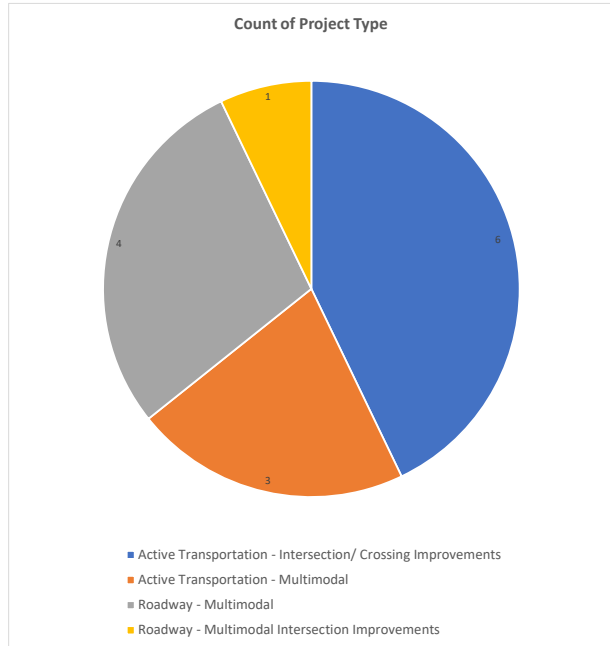
- Active Transportation - Intersection/ Xiing Improvements
- Roadway - Multimodal Intersection Improvements
- Active Transportation - Multimodal
- Roadway - Multimodal
- Schools
- Urban Centers
- Parks

Transportation Strategic Plan (TSP) Project List  
Scenario 2 - Top Scoring by Category

Count	PMX_ID	Project Title	Start_W_S	End_E_N	Project Type	Description	Cost_LowEstimate	Cost_HighEstimate	Total Score_All Categories	Packaging_ByCategory (Top scorers in each category) The number in this column shows in how many categories this project was a top scorer.	In Top 10-13 by Category (these are the 'top of the top') Meaning that if a project scored the highest in a category, these are those that scored the top overall (total score) out of that group. The number indicates how many categories this project was at the 'top of the top'.	Top 10-13 by category (this field indicates which categories a project was 'top of the top')
1	CIP_NMC1580	6th and NE 85th St Protected Intersection	NE 85th St	<Null>	Active Transportation - Intersection/ Crossing Improvements	6th and NE 85th St Protected Intersection. Striping, signalization changes, and protection islands at the intersection for sidewalks and raised protected bike lanes on NE 85th St Station Area Plan Scope P5	\$ 251,000.00	\$ 362,000	280	5	5	S, AT, Tr, V, Tech
2	SAP_COK_P11	NE 85th St/ 124th Ave NE intersection improvements	124th Ave NE	<Null>	Active Transportation - Intersection/ Crossing Improvements	Protected intersection including safety improvements for walking and bicycling, included as part of Station Area Plan Scope 4	\$ 96,491.00	\$ 139,364	280	4	5	S, Tr, V, Tech, P
3	SAP_COK_4	124th Ave NE Widening (NE 85th St to NE 90th St)	NE 85th St	NE 90th St	Roadway - Multimodal	Widen roadway to five lane cross section from NE 85th St through the NE 90th St intersection, widened sidewalks and raised protected bike lanes from NE 84th Ln through NE 90th St intersection. Station Area Plan Scope 4	\$ 28,681,000.00	\$ 41,428,000	270	5	4	S, Tr, V, M
4	SP_23	100th Ave NE Multimodal Improvements - Phase 2 (NE 132nd - NE 139th)	NE 132nd St	NE 139th St	Roadway - Multimodal	Roadway improvements along 100th Ave NE to address the current 5-lane to 2-lane transition. This and other elements of the ultimate project will, at a minimum, provide for protected bicycle lanes, a center turn lane where appropriate, sidewalks, curb and gutter, illumination improvements and storm drainage system upgrades.	\$ 27,133,000.00	\$ 39,192,000	270	4	5	S, Tr, V, M, Eq
5	SRTS_JN 07	NE 120th Pl/ NE 122nd St crossing improvements	NE 122nd St	<Null>	Active Transportation - Intersection/ Crossing Improvements	Enhance crossing - Multi-lane Street	\$ 96,491.00	\$ 139,364	270	4	5	S, AT, Tr, V, Eq
6	SAP_COK_5	NE 85th St/120th Ave NE intersection Modifications	120th Ave NE	<Null>	Roadway - Multimodal Intersection Improvements	Revised signalization, added NB left turn lane, revised curb ramps, crosswalk striping for shared use paths. Station Area Plan Scope 5	\$ 700,000.00	\$ 1,011,000	260	4	4	Tr, V, Tech, P
7	ATP_Pri_3323	124th Ave NE Multimodal Improvements (NE 90th to 116th)	NE 90th St	NE 116th St	Active Transportation - Multimodal	Provide 80ft of right of way for center turn lane or landscaped median, one through lane each direction, protected bike lanes, wide landscape strips, sidewalks, and street lights on both sides of the street	\$ 6,140,437.00	\$ 8,869,504	260	4	4	S, V, Eq, LU
8	SAP_COK_P2	NE 85th St/122nd Ave NE Protected Intersection	122nd Ave NE	<Null>	Active Transportation - Intersection/ Crossing Improvements	Striping, signalization changes, and protection islands at the intersection for sidewalks and raised protected bike lanes on NE 85th St. Station Area Plan Scope P2	\$ 173,846	\$ 251,154	260	4	3	Tr, V, Tech
9	SRTS_JN 02	NE 124th St/ 102nd Ln NE crossing improvements	102nd Ln NE	<Null>	Active Transportation - Intersection/ Crossing Improvements	Enhance crossing - Multi-lane Street	\$ 96,491.00	\$ 139,364	250	5	5	AT, Tr, V, Eq, St
10	SRTS_JN 18	NE 124th St/ 105th Pl NE crossing improvements	105th Pl NE	<Null>	Active Transportation - Intersection/ Crossing Improvements	Enhance crossing - Multi-lane Street	\$ 96,491.00	\$ 139,364	250	5	5	AT, Tr, V, Eq, St
11	NE 132ND ST4	NE 132nd St Multimodal Corridor (100th Ave NE to I-405) west section	100th Ave NE	I-405	Roadway - Multimodal	Protected Bike Lanes. Perform sidewalk repairs. Implement transit signal priority and improved pedestrian crossing treatments	\$ 1,644,000.00	\$ 2,374,000	250	5	3	V, Tech, Eq
12	ATP_Cat_171	NE 128th St Multimodal Improvements (Totem Lake Blvd to 120th Ave NE)	Totem Lake Blvd	120th Ave NE	Active Transportation - Multimodal	Add raised protected bike lane at curbside level on north side, in-street with delineators on south side. Project will include moving bus stops and signal modifications. At the NE 128th St and 120th Ave NE intersections for the eastbound left turn, change signal phasing from permissive to protected-permissive with flashing yellow arrow.	\$ 636,271.00	\$ 919,057	250	4	3	AT, Tr, Eq
13	Joel_P1	Kirkland Way Multimodal Corridor	6th St	NE 85th St	Roadway - Multimodal	Add buffered bike lanes and continuous sidewalks from 6th St to NE 85th St. Will require widening or replacement of low clearance bridge of CKC, tree removal, and pipe structures. Included in Station Area Plan Scope 9	\$ 21,263,000.00	\$ 30,713,000	250	4	3	AT, Tr, M

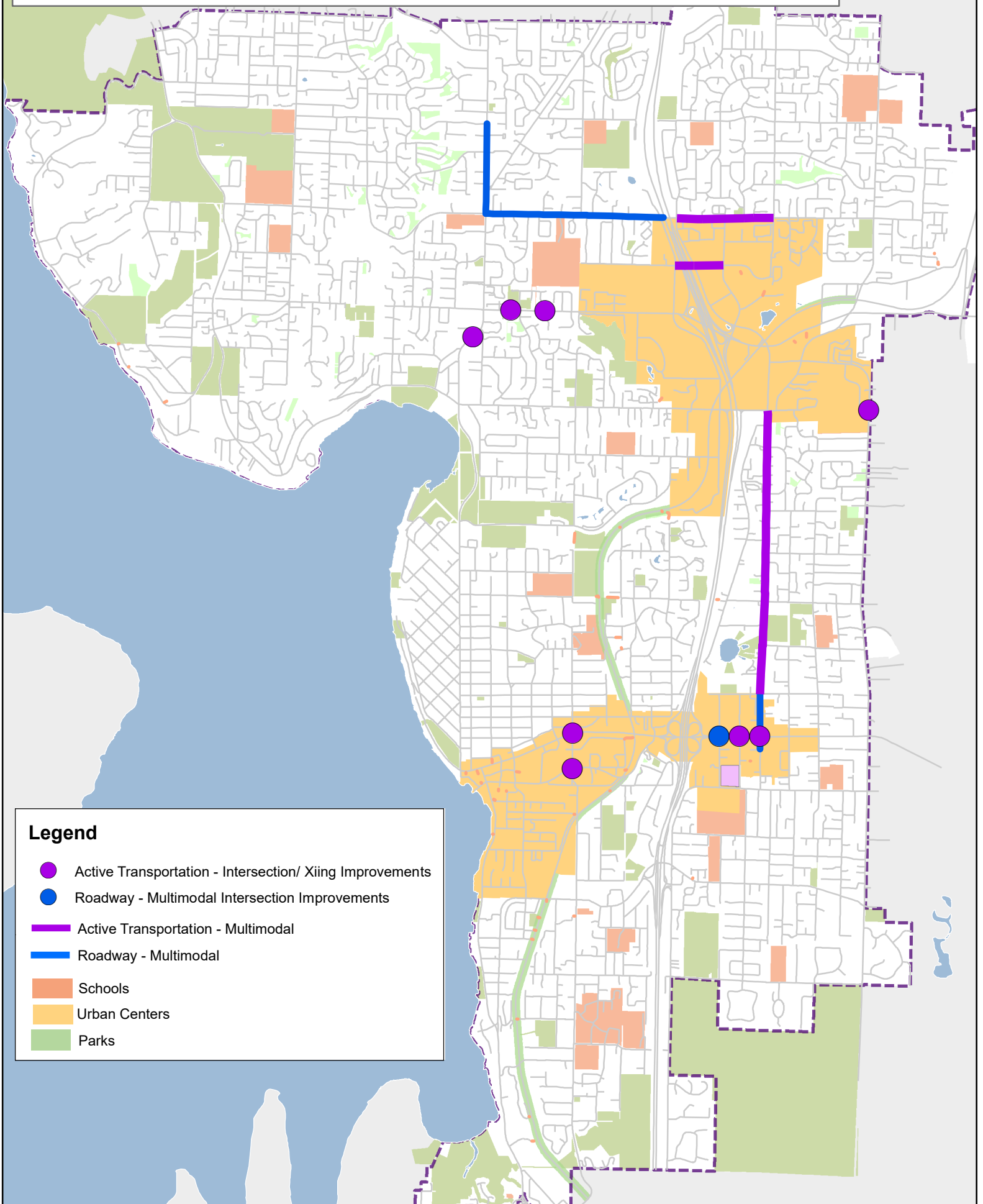
Transportation Strategic Plan (TSP) Project List  
Scenario 2 - Top Scoring by Category

Count	PMX_ID	Project Title	Start_W_S	End_E_N	Project Type	Description	Cost_LowEstimate	Cost_HighEstimate	Total Score_All Categories	Packaging_ByCategory (Top scorers in each category) The number in this column shows in how many categories this project was a top scorer.	In Top 10-13 by Category (these are the 'top of the top') Meaning that if a project scored the highest in a category, these are those that scored the top overall (total score) out of that group. The number indicates how many categories this project was at the 'top of the top'.	Top 10-13 by category (this field indicates which categories a project was 'top of the top')
14	ATP_Pri_3082	NE 132nd St Multimodal Corridor (I-405 to 124th Ave NE) - mid section	I-405	124th Ave NE	Active Transportation - Multimodal	Protected Bike Lanes. Perform sidewalk repairs. Implement transit signal priority and improved pedestrian crossing treatments	\$ 3,977,000.00	\$ 5,744,000	250	4	3	V, Tech, Eq



- Top Projects Key**
- S = Safety
  - AT = Active Transportation
  - Tr = Transit
  - V = Vehicle Network Management
  - Eq = Equity
  - St = Sustainability
  - P = Partnerships
  - M = Maintenance
  - LU = Land Use
  - Tech = Technology

# TSP Projects - Scenario 2 (Top in Each Category)



## Legend

- Active Transportation - Intersection/ Xiing Improvements
- Roadway - Multimodal Intersection Improvements
- Active Transportation - Multimodal
- Roadway - Multimodal
- Schools
- Urban Centers
- Parks