

School Zone Safety Camera Program Expansion

KIRKLAND TRANSPORTATION COMMISSION

JULY 27, 2022





Introduction

Existing pilot program

Program expansion

Schedule

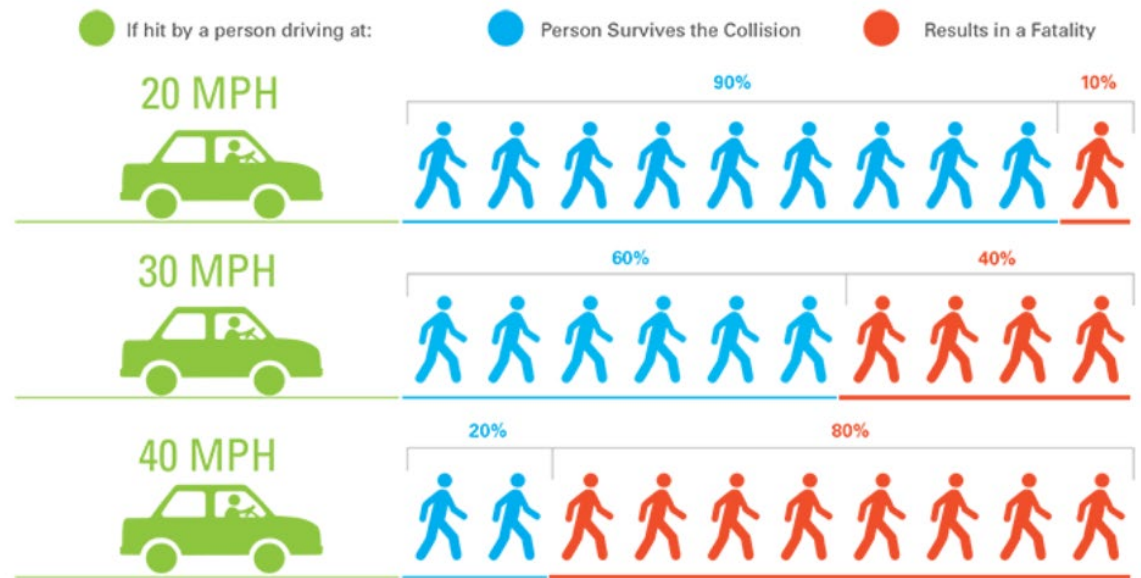
Existing Pilot Program – Goal

Primary

- Slow traffic speeds and improve safety for school children

Secondary

- Encourage people to use alternative modes to school



Vehicle Speed comparison to chance of Pedestrian Injury and Fatality
Data source: US Department of Transportation, Literature Reviewed on Vehicle Travel Speeds and Pedestrian Injuries. March 2000.
Image credit: San Francisco MTA Vision Zero Action Plan, Feb. 2015

Existing Pilot Program Locations

JOHN MUIR ELEMENTARY/KAMIAKIN MIDDLE
(132ND AVENUE NE)



ROSE HILL ELEMENTARY
(NE 80TH STREET)

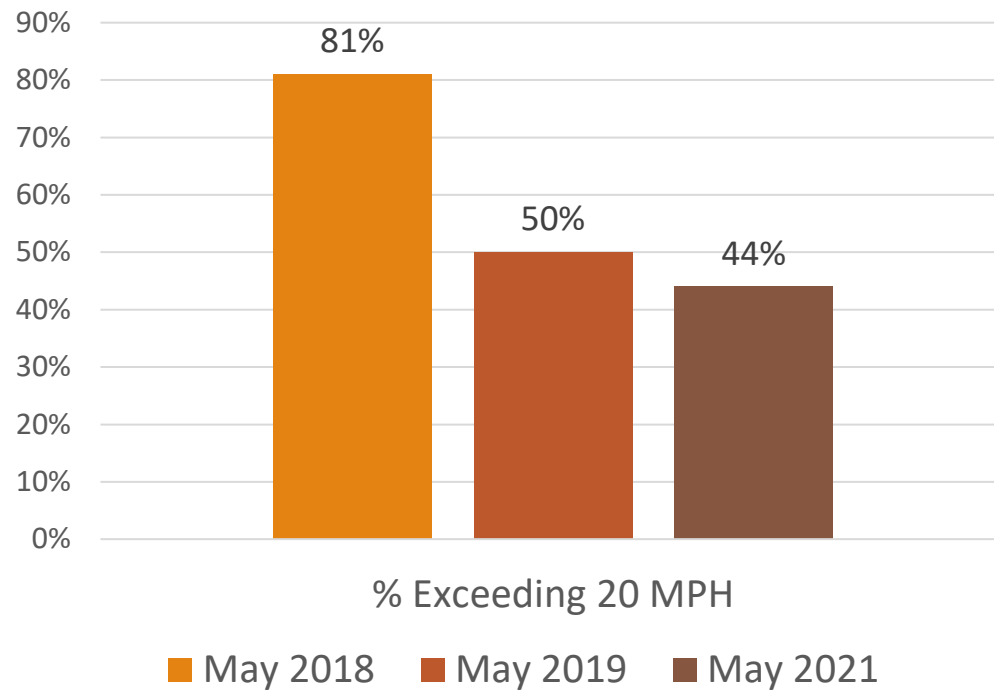


Existing Pilot Program Timeline

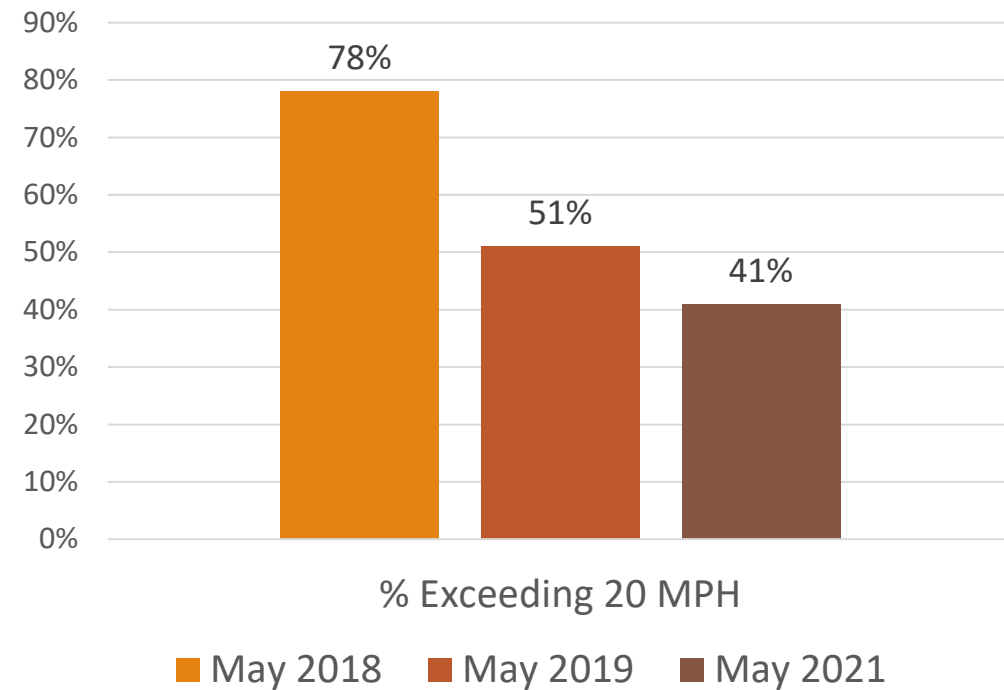
- May 2018 – *Data Collection*
- March 2019 – Updated signage, added school zone flashing beacons
- May 2019 – *Data Collection (before study)*
- Sept 2019 – Cameras activated
- March 2020 – Cameras deactivated due to COVID-19 pandemic
- Feb 2021 – Cameras reactivated as schools reopen
- May 2021 – *Data Collection (after study)*
- May 2022 – *Ongoing Data Collection*

Existing Pilot Program – Overall Results

John Muir/Kamiakin



Rose Hill



School Zone Expansion – Evaluation

Criteria

- History speed and volume data
- Site conditions, including existing flashing beacons
- Ongoing complaints

Four School Zones

1. AG Bell Elementary—NE 112th Street
2. Carl Sandburg Elementary, Finn Hill Middle, and Henry David Thoreau Elementary—84th Avenue NE
3. Lakeview Elementary—State Street and NE 68th Street
4. Peter Kirk Elementary—15th Avenue and 6th Street

School Zone Expansion – Evaluation Results

School(s)	Location	Traffic Volume*		Percent 26 MPH and Over
		Total	26 MPH +	
AG Bell Elementary	EB & WB NE 112 th St	900	96	11%
Carl Sandburg Elementary, Finn Hill Middle, and Henry David Thoreau Elementary	NB & SB 84 th Ave NE	2,120	584	28%
Lakeview Elementary	SB State St & WB NE 68 th St	2,272	745	33%
Peter Kirk Elementary	NB 6 th St & EB 15 th Ave	1,139	209	18%

* Traffic volume is Tuesday, Nov 30 & Thursday, Dec 2 while school zone beacons are flashing.

Locations

Carl Sandburg Elementary, Finn Hill Middle, and Henry David Thoreau Elementary

- 84th Avenue NE southbound near NE 141st Street
- 84th Avenue NE northbound near NE 126th Place

Lakeview Elementary

- State Street southbound near 7th Avenue S
- NE 68th Street westbound near 106th Avenue NE

Schedule

Signage being updated in both school zones

- About 60 post holes with concrete bases, new steel posts
- About 130 signs (replacement and new)

Mailers to 5,500+ addresses, door to door outreach along State St, notified school district

Goal to activate expanded program start of 2022-2023 school year (with a warning period)

School Zone Safety Camera Program Expansion

Questions?