

**CITY OF KIRKLAND****Public Works Department****123 Fifth Avenue, Kirkland, WA 98033 425.587.3800****www.kirklandwa.gov**

MEMORANDUM

To: Transportation Commission

From: Daniel Rawlings, Transportation Engineer
Joel Pfundt, Transportation Manager

Date: February 17, 2021

Subject: CKC/Eastrail Crossing Study at 132nd Ave NE

Staff Recommendation:

It is recommended that the Transportation Commission receive a briefing and provide input on the CKC/Eastrail Crossing Study at 132nd Ave NE.

Background:

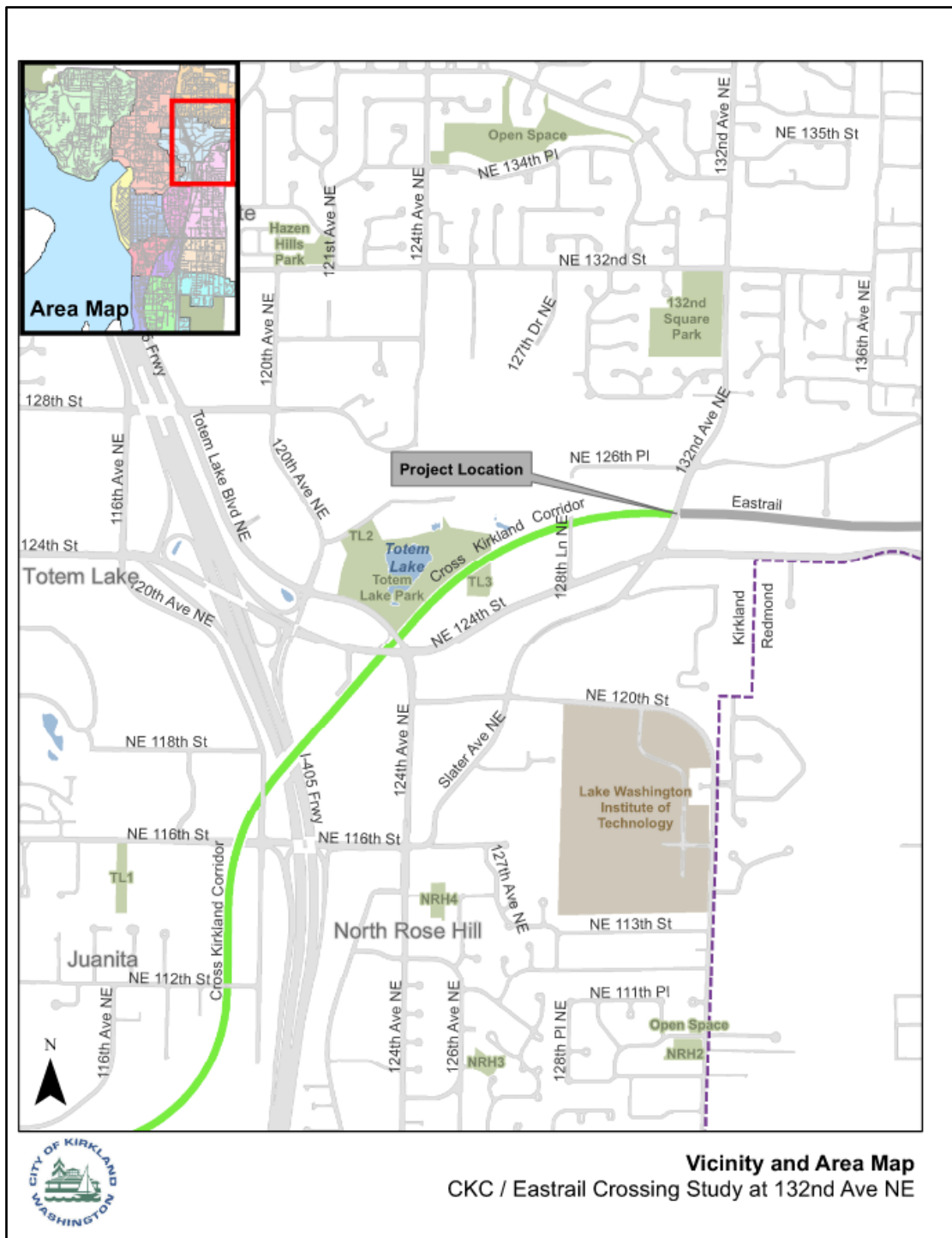
The Eastrail is the 42-mile multi-use corridor that connects the cities of Renton, Bellevue, Kirkland, Woodinville, Redmond and Snohomish. Converted from a former railroad line, the Eastrail will provide new opportunities for non-motorized travel and other amenities across the Eastside once it is fully complete.

The Eastrail has about 13 miles currently open; some of these segments include the Cross Kirkland Corridor (CKC) and the Redmond Central Connector (RCC). A new section of the Eastrail that connects Kirkland to Woodinville will open later in 2022. This new Eastrail section will begin at the north end of the CKC at 132nd Ave NE and continue north to 139th Ave NE/ Willows Road to the Willows Road Connector which connects to the Redmond Central Connector and will continue north to NE 145th St in Woodinville. Once this new section of Eastrail is completed, there will still be one missing piece connecting the CKC to the Eastrail: the crossing of 132nd Ave NE. When the new section of Eastrail opens, trail users will have to temporarily cross 132nd Ave NE at the NE 124th St intersection (located approximately 350 feet to the south of the CKC/Eastrail).

The City faces the challenge of providing a crossing that not only promotes safety and functionality for the trail users but minimizes impacts to vehicular traffic. The CKC/Eastrail Crossing Study at 132nd Ave NE will address this challenge through the study of at-grade and grade-separated trail crossings of 132nd Ave NE.

Study Area:

The study area will focus on the CKC and Eastrail near 132nd Ave and on 132nd Ave/Slater Ave between NE 124th St and NE 126th Pl. A traffic operations analysis will be conducted on 132nd Ave/Slater Ave that will include the intersections at NE 124th St and NE 126th Pl and the two auto dealership driveways on Slater Ave.



Scope of Work:

The stated goal of this Study is to identify a preferred crossing concept for implementation. Both at-grade and grade-separated alternatives will be analyzed. The final recommendation will likely be in the form of a short-term and long-term solution.

In summary, this study will:

- Collect traffic data, data on critical areas, and basemapping to assist in establishing the baseline conditions, development of alternatives, and provide information for screening of alternatives.
- Develop existing and baseline traffic forecasts and operations conditions analysis within the study area to support alternative development and screening.
- Establish the goals, evaluation criteria, methodology, and measures of effectiveness for the screening of alternatives.
- Develop four different crossing design concepts. These will include two at-grade crossing concepts (one at-grade concept within existing curb lines and one at-grade concept with re-channelization) and two grade-separated crossing concepts (one tunnel and one bridge).
- Conduct a final screening analysis resulting in the recommendation of a short-term and long-term solution.

Alternatives Workshop:

On February 22, 2022, the project team will conduct an alternatives workshop. The primary goals of the alternatives workshop will be:

- Confirm project screening criteria
- Develop/finalize priorities and process to identify viable at-grade and grade separated crossings

The Commission will be provided a summary of the results of the alternatives workshop; a draft version of the screening criteria is provided in the attached presentation slides which will be updated after the alternatives workshop.

Schedule (2022):

- January – February: Compose project framework, collect data, and establish baseline conditions.
- February – April: Alternative development, traffic analysis, layout preferred concepts, and final screening.
- April – May: Develop draft and final report for Council review.

Attachment 1 – February 23, 2022 Transportation Commission Presentation