

# **NE 128<sup>th</sup> Street Multimodal Corridor Study**

## **Draft Recommended Improvements**

### **Transportation Commission**

**October 27, 2021**

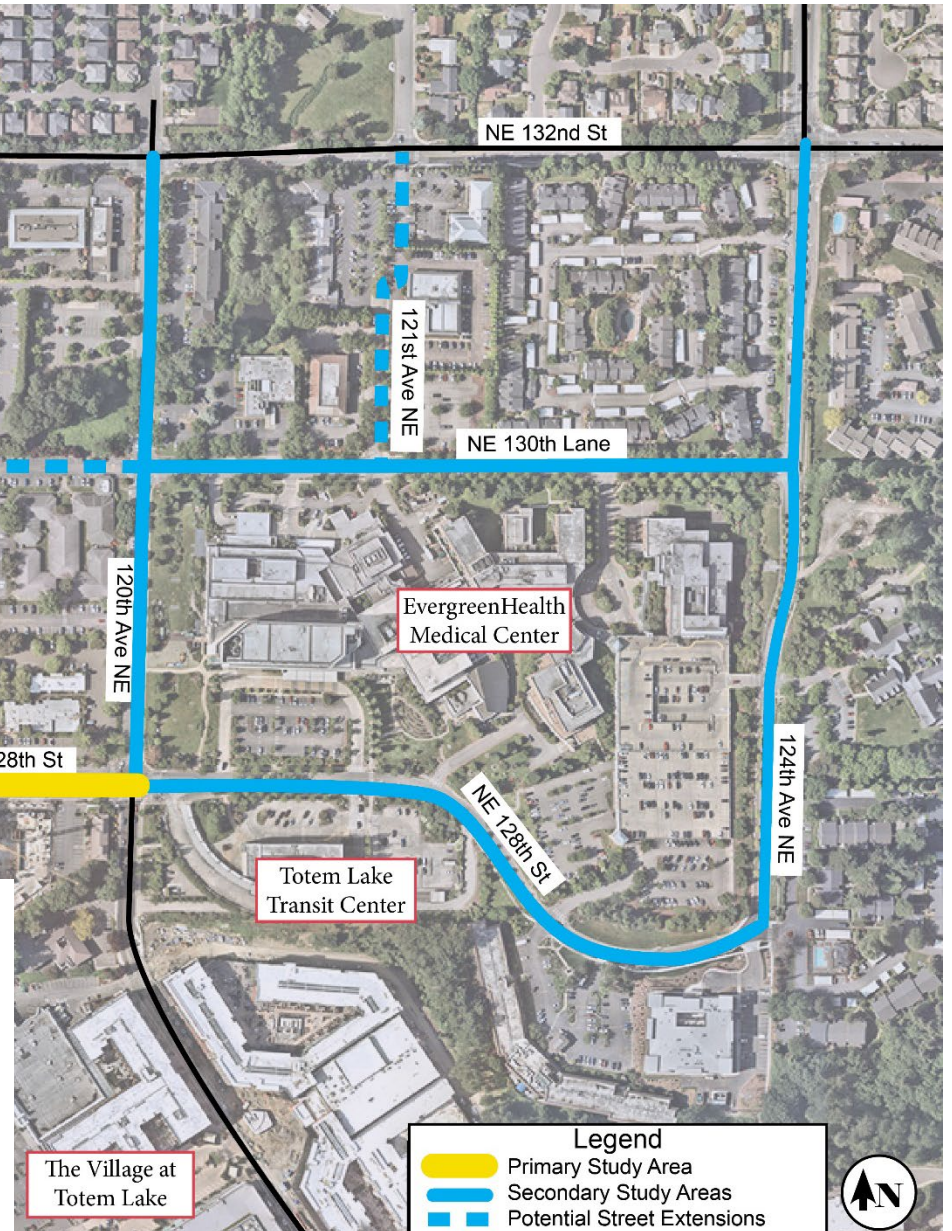
Kim Scrivner  
Transportation Planner

Michael Lapham  
KPG



goal of this project is to improve the multimodal environment on NE 128<sup>th</sup> Street and other study corridors to **facilitate transit connections** and be an appealing **safe place for people walking, cycling, driving and taking transit.**

goal of this project is to improve the multimodal environment on NE 128<sup>th</sup> Street and other study corridors to **facilitate transit connections** and be an appealing **safe place for people walking, cycling, driving and taking transit.**



# Previous Plans and Studies

- Kirkland Transit Implementation Plan (2019)
- Evergreen Health/Totem Lake Traffic Study (2019)
- Totem Lake Urban Center Enhancement & Multimodal Transportation Network Plan (2018)
- Totem Lake Business District Plan (Updated 2015)
- Stride Bus Rapid Transit (BRT) plans and designs
- RapidRide K Line preliminary design
- Private development plans and designs



# Scope of Work Summary

- Conduct a public and stakeholder outreach process to share information and receive feedback.
- Develop mobility and safety improvements for all travel modes.
- Develop cross sections for three potential street extensions.
- Develop Urban Design Guidelines for streets.



# Public Outreach Efforts to Date

- Project Webpage
- Public Outreach Meetings
  - WSDOT (bi-weekly meetings)
  - Juanita Neighborhood Association
  - Evergreen Hill Neighborhood Association
  - Transportation Commission
  - EvergreenHealth Medical Center
  - Public open house (6/23/2021)
  - King County Metro and Sound Transit



# Planned WSDOT and Sound Transit Projects



# Key Findings: NE 128th Street

- Need to maintain 4-lanes on NE 128<sup>th</sup> St between Totem Lake Blvd and 120<sup>th</sup> Ave NE to maintain I-405 interchange operations and accommodate high volume of buses.
- Provide enhanced bus stops on NE 128<sup>th</sup> St to potentially reduce bus routes using Totem Lake Transit Center – improves bus travel times and intersection operations.
- Identified several multimodal safety and mobility improvements.
- Not recommending addition of westbound left turn at NE 128th Street and Totem Lake Blvd intersection.



# Westbound Left at NE 128th St & Totem Lake Blvd

- Limited space at northeast corner of intersection and widening for left turn lane would impact property and result in reduced non-motorized facilities.
- Addition of westbound left turn movement would negatively impact traffic operations at intersection and interchange.



## Planned Alternatives to Westbound Left Turn

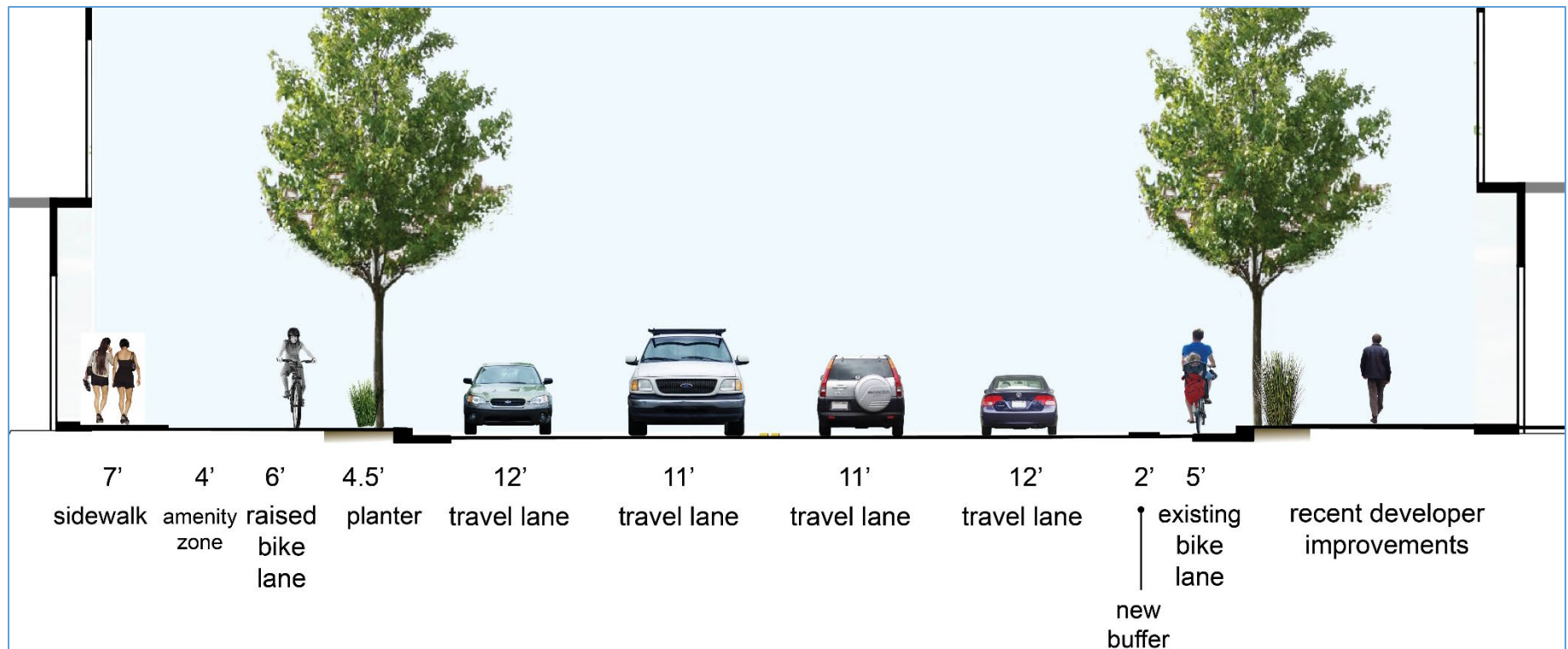
- Future NE 132nd Street and I-405 interchange will provide new connection to I-405 and reduce demand for westbound left turn (opens in 2023).
- Future NE 130<sup>th</sup> Place street extension will provide alternative route for westbound left turns to southbound Totem Lake Blvd.



# NE 128th St between Totem Lake Blvd and 120th Ave NE

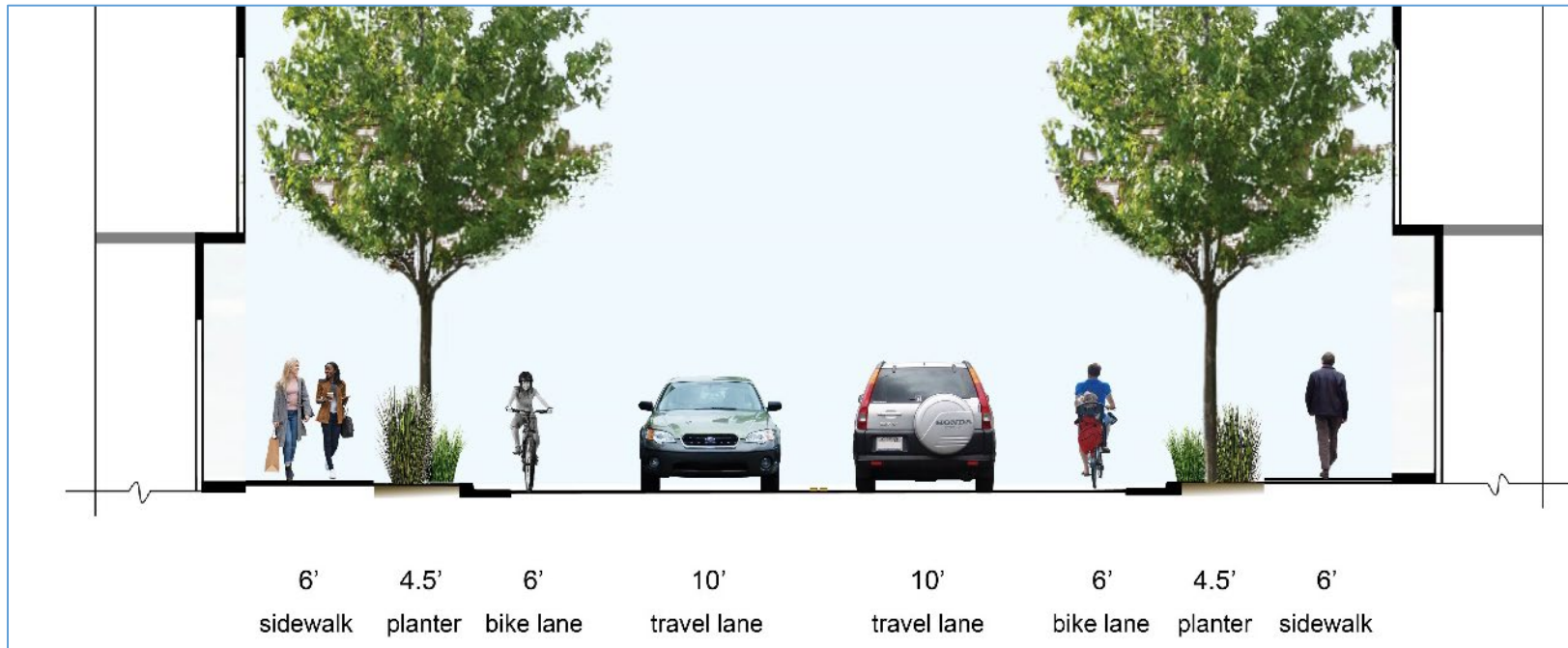
## Planned Improvements:

- Implement two enhanced bus stops.
- Install 6' raised bike lanes on the north side of street.
- Add 2' buffer to existing bike lane on south side of street.



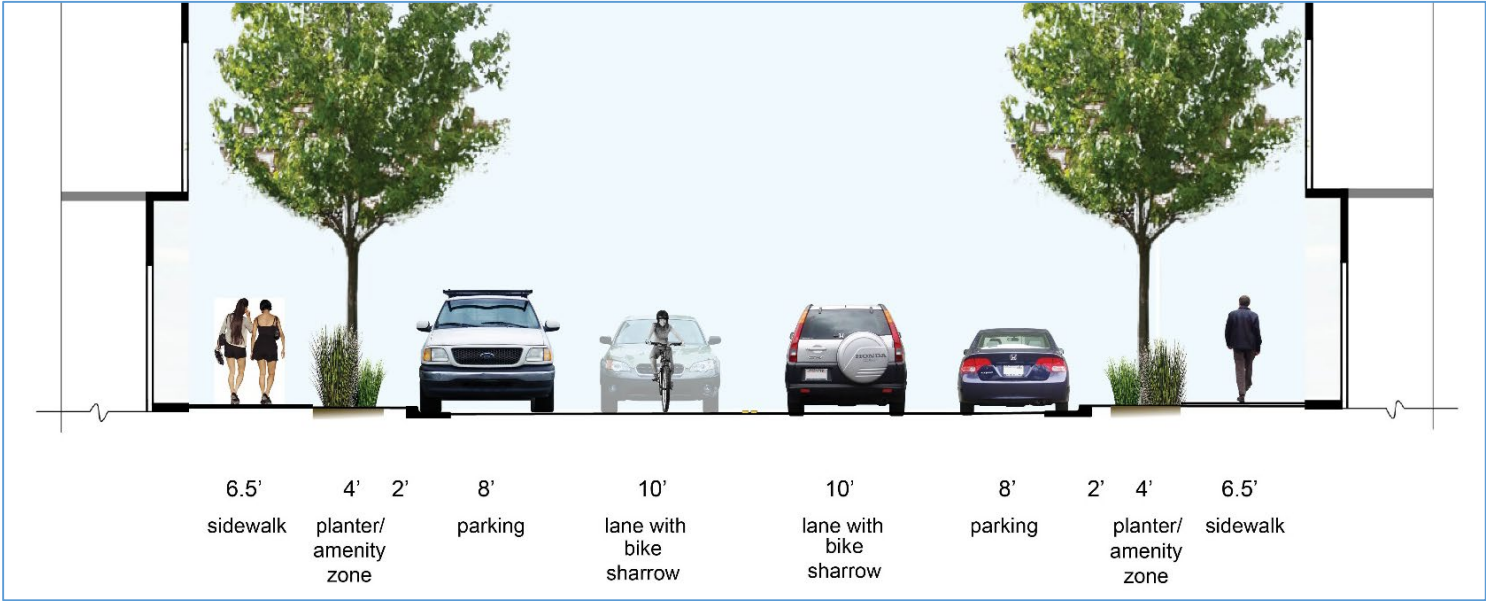
# Planned Street Extensions

- **NE 130<sup>th</sup> PI** between Totem Lake Blvd and 120<sup>th</sup> Ave NE
- **121<sup>st</sup> Ave NE** between NE 132<sup>nd</sup> St and NE 130<sup>th</sup> St



# Planned Street Extensions

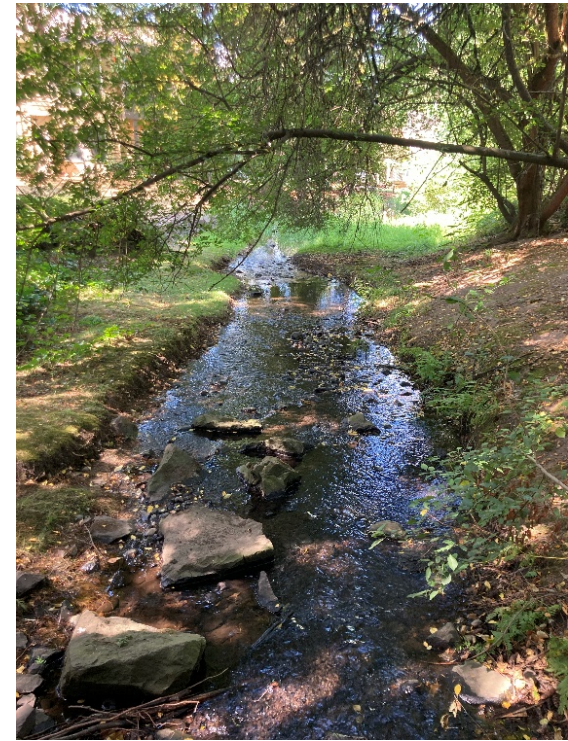
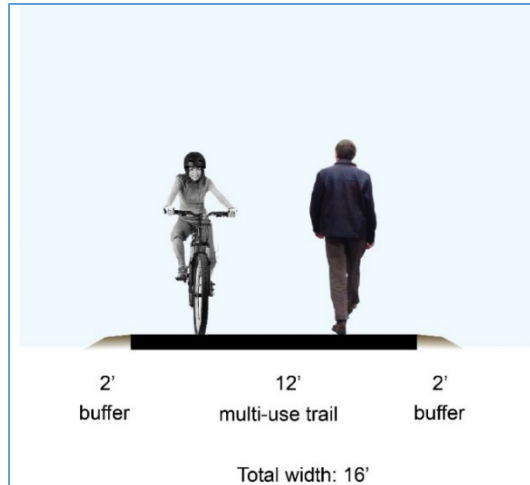
**118<sup>th</sup> Ave NE** (south half) between  
NE 130<sup>th</sup> Pl and NE 128<sup>th</sup> St



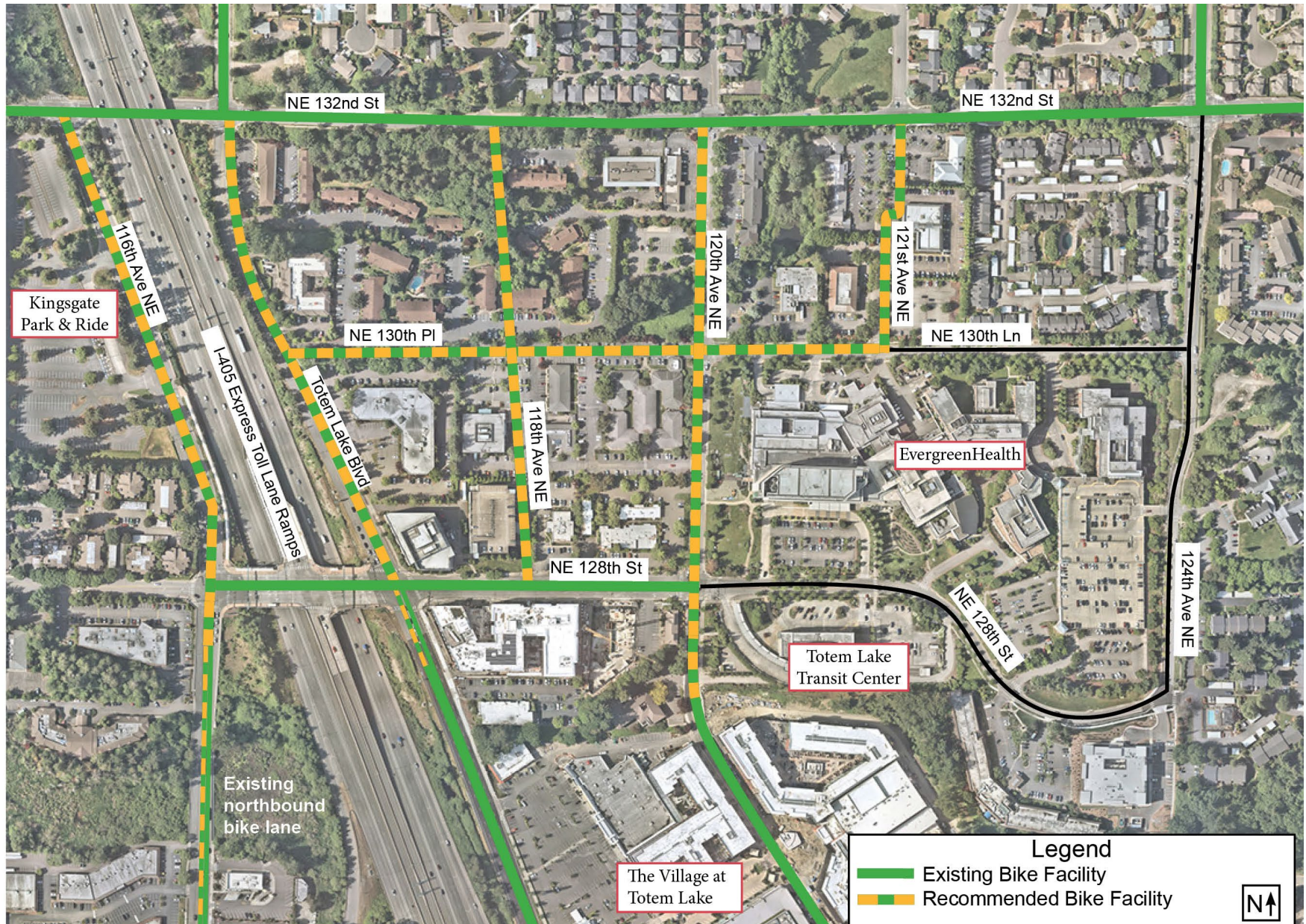
# Planned Connection

## 118<sup>th</sup> Ave NE (north half) between NE 132<sup>nd</sup> St and NE 130<sup>th</sup> PI

- 12' wide shared-use path that provides north-south non-motorized connection.
- Constructing a street would have **limited benefits** to the vehicle network and large impacts to **Juanita Creek** and high cost of construction due to **steep grade**.



# Existing and Recommended Bike Facilities



# Next Steps and Schedule

---

- Stakeholder Meetings: October – November 15
- Second Public Open House: November 9
- Complete analysis and preliminary design: Oct./Nov.
- Complete Report: December



# Discussion and Questions

