

NE 128th Street Multimodal Corridor Study

Transportation Commission

April 28, 2021

Kim Scrivner
Transportation Planner

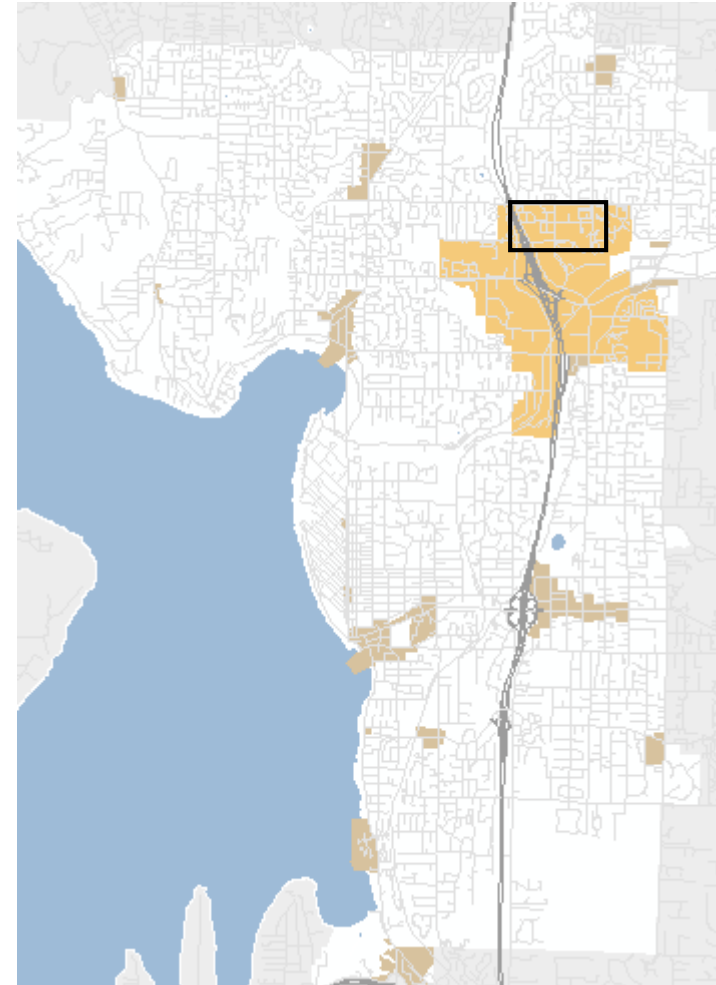
Michael Lapham
KPG



Project Background

NE 128th Street is a key multimodal corridor that serves the growing Totem Lake area as well as the Kingsgate Park and Ride, I-405 direct access ramps, flyer bus stops, the Totem Lake Transit Center and Evergreen Health Medical Center.

Sound Transit's Stride Bus Rapid Transit (BRT) is scheduled to start service in 2025, increasing the demand for the I-405 flyer bus stops.

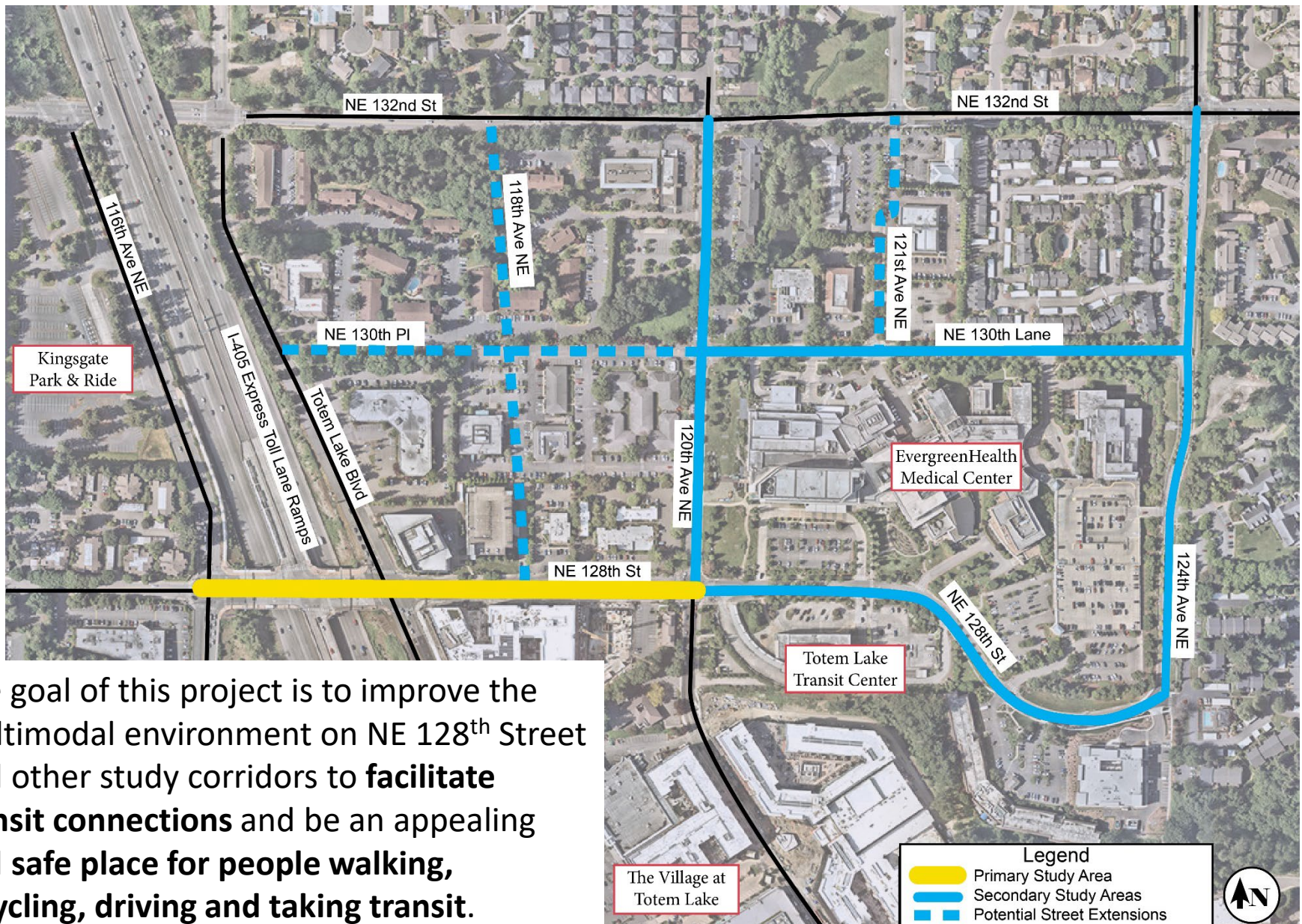


Previous Plans and Studies

- Kirkland Transit Implementation Plan (2019)
- Evergreen Health/Totem Lake Traffic Study (2019)
- Totem Lake Urban Center Enhancement & Multimodal Transportation Network Plan (2018)
- Totem Lake Business District Plan (Updated 2015)
- Stride Bus Rapid Transit (BRT) plans and designs
- RapidRide K Line preliminary design
- Private development plans and designs



Project Study Areas



The goal of this project is to improve the multimodal environment on NE 128th Street and other study corridors to **facilitate transit connections** and be an appealing and **safe place for people walking, bicycling, driving and taking transit.**

Future Projects



Multimodal Improvements

- Identify mobility and safety improvements for walking and biking connections to transit and Stride BRT, EvergreenHealth, and Totem Lake destinations.
- Enhance vehicle circulation, including evaluation of westbound left turn at NE 128th Street and Totem Lake Blvd intersection.
- Develop cross sections for potential street extensions.
- Evaluate options to simplify operations at Totem Lake Transit Center.
- Develop Urban Design Guidelines for streets.



What are the issues/needs for each of the travel modes?

