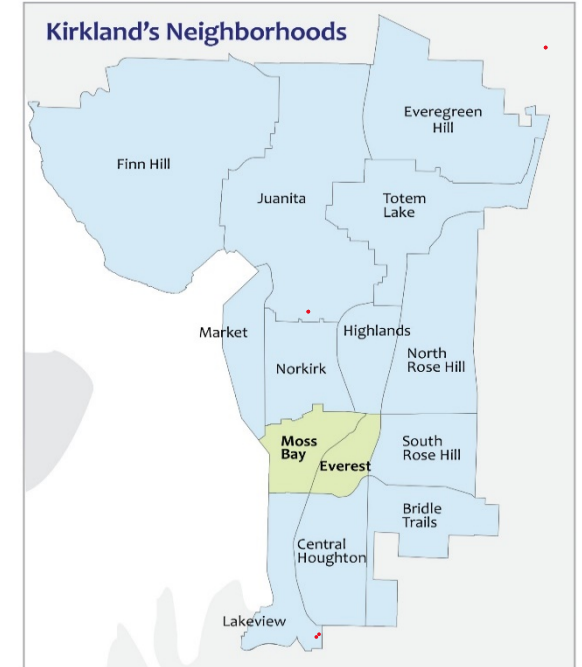


2021 NEIGHBORHOOD PLAN UPDATES MOSS BAY AND EVEREST



TRANSPORTATION COMMISSION

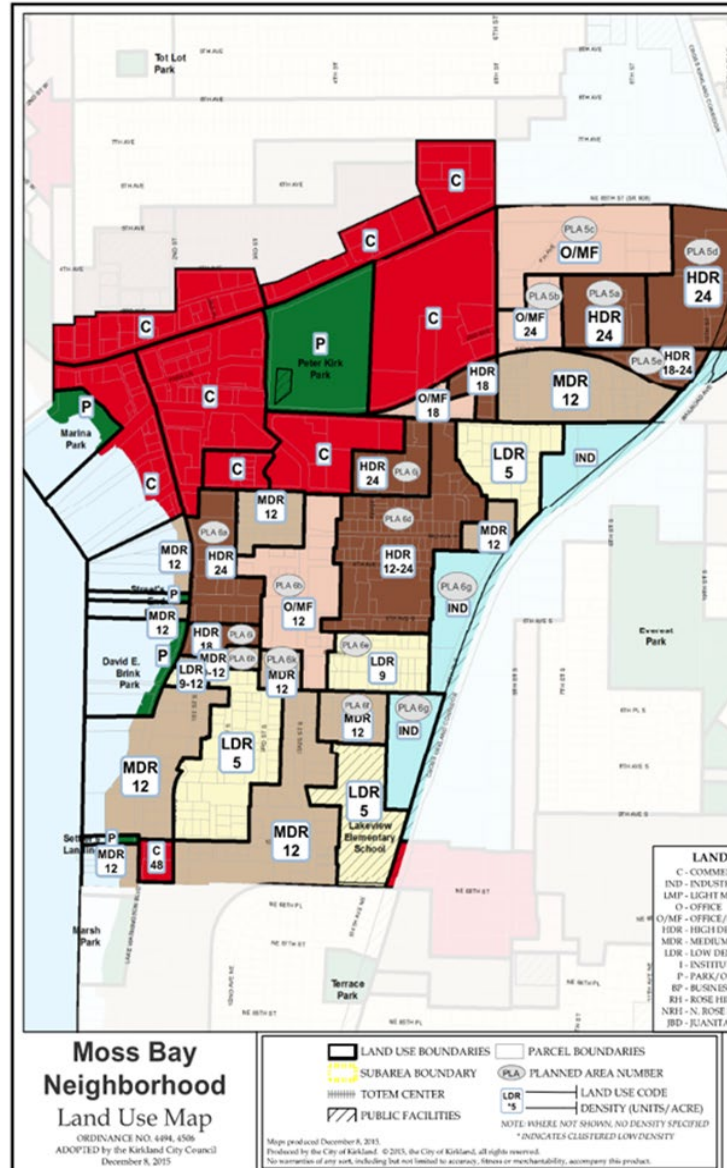
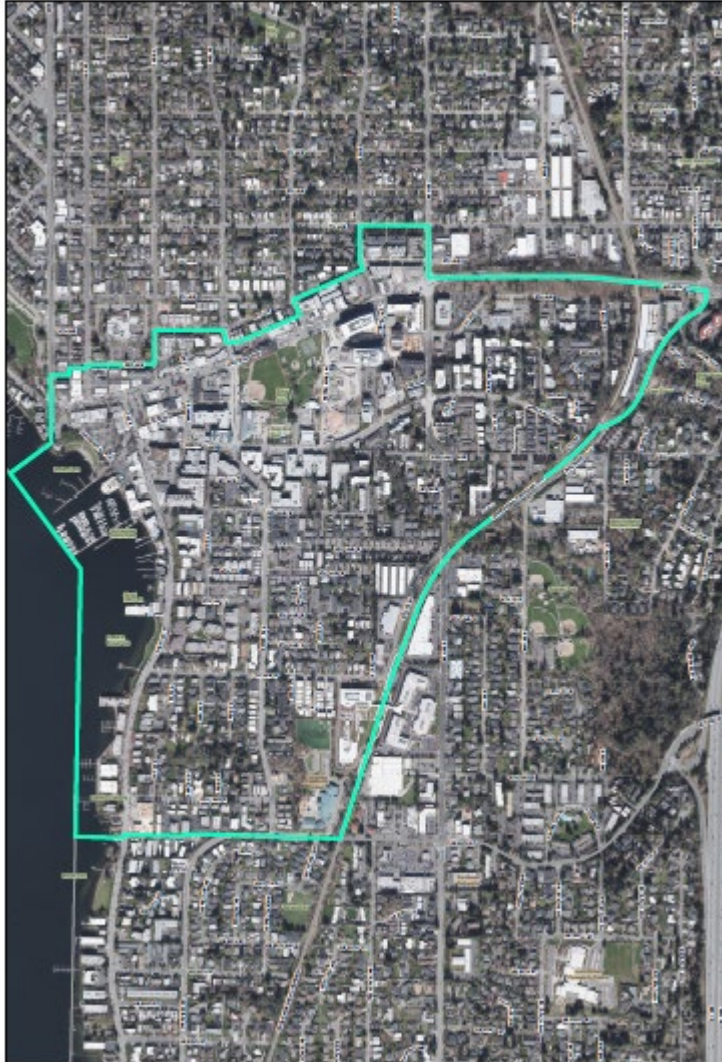
APRIL 28, 2021



PLANNING AND BUILDING DEPARTMENT
JANICE SWENSON AND DAVID BARNES



Moss Bay Neighborhood



MOSS BAY NEIGHBORHOOD -BOUNDARIES -LAND USE



Everest Neighborhood

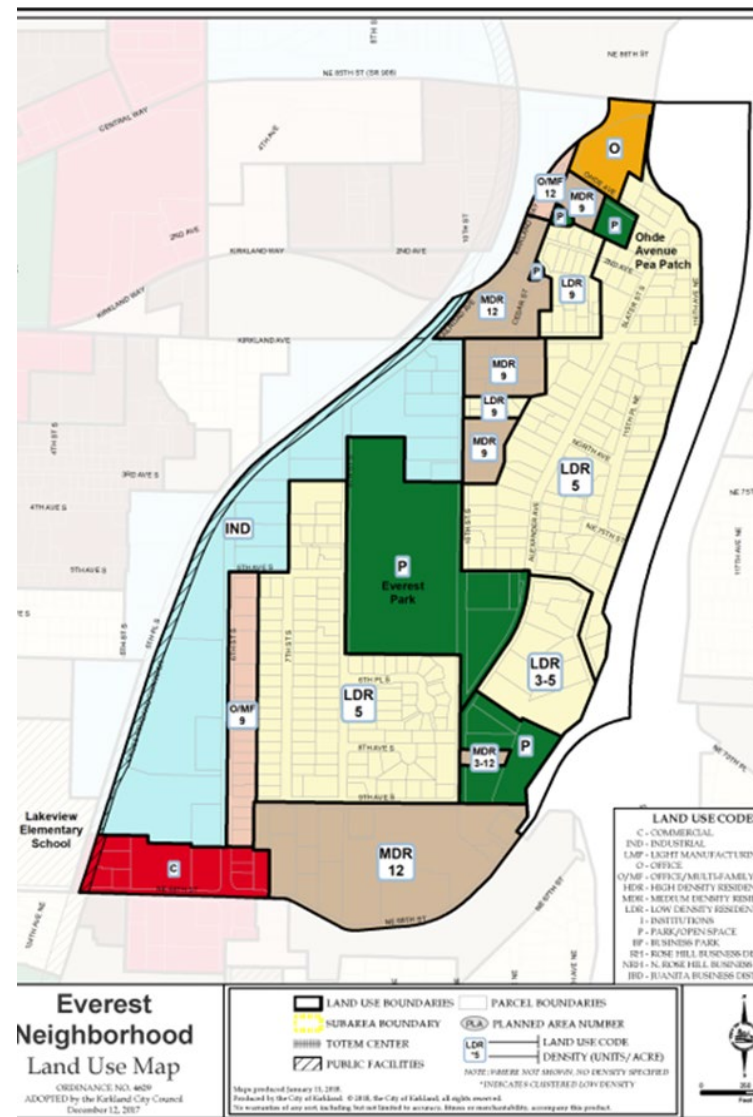
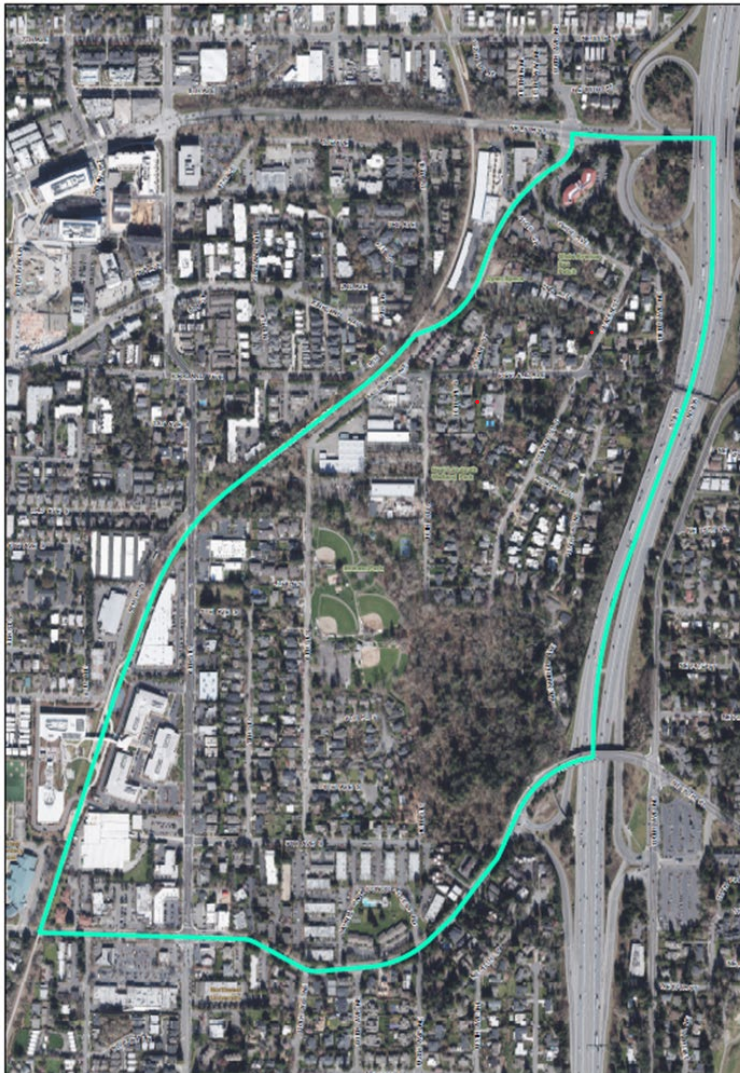


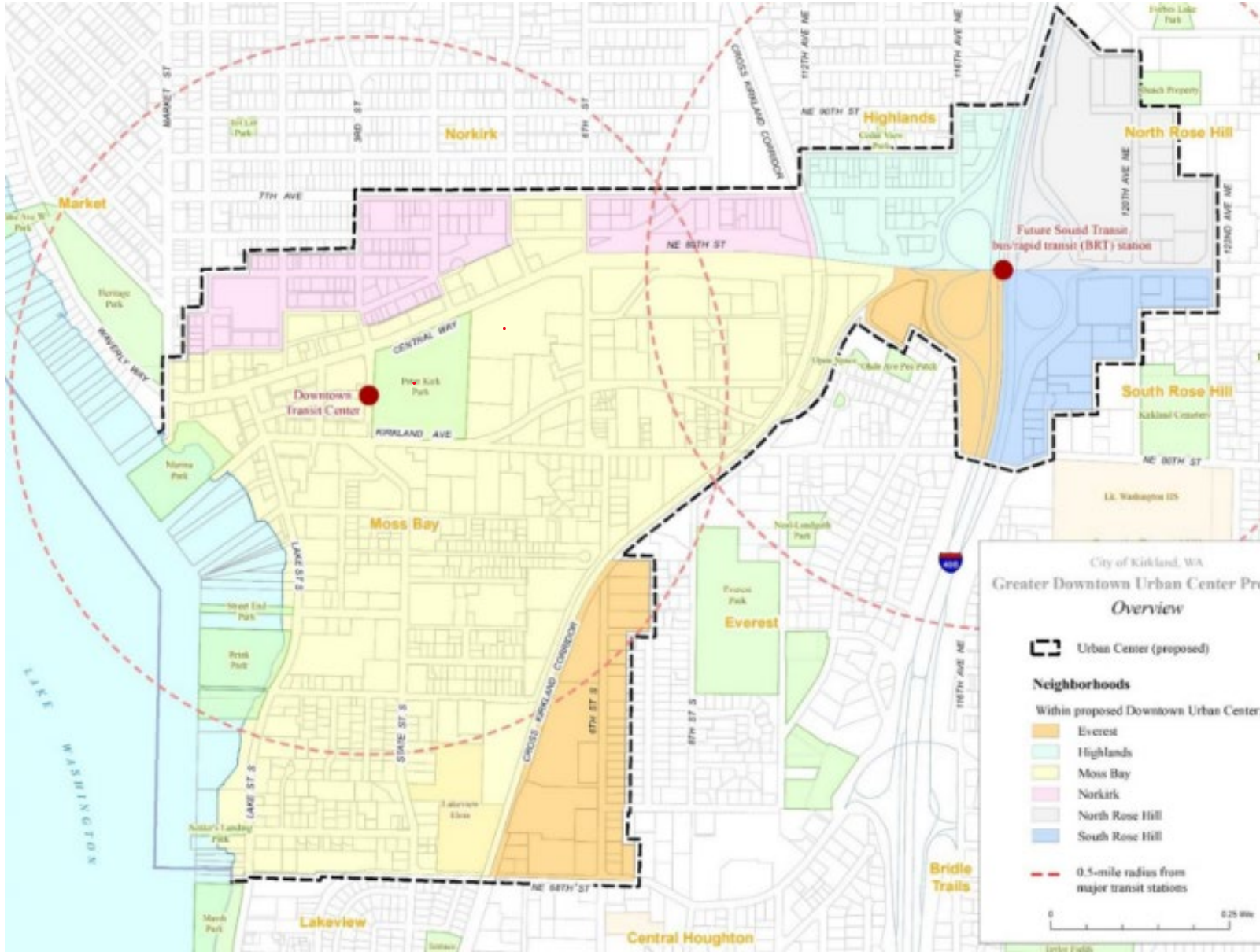
Figure EV-3: Everest Land Use

EVEREST NEIGHBORHOOD -BOUNDARIES -LAND USE

GREATER DOWNTOWN KIRKLAND URBAN CENTER

NE 85TH STREET STATION AREA PLAN STUDY

NE 85TH STREET SOUND TRANSIT BRT STATION



GOALS OF NEIGHBORHOOD PLAN UPDATE

Complete in
one year

Every
neighborhood
gets a timely
update

**Active and
equitable public
participation
process**

Reduce
redundancy with
Comp Plan &
Citywide Plans

Make plans
concise and
streamlined

Build on unique
assets of
neighborhood

Combine public
outreach
opportunities
when feasible

New graphic
format for Plans

WHAT IS NEW WITH THIS PROCESS

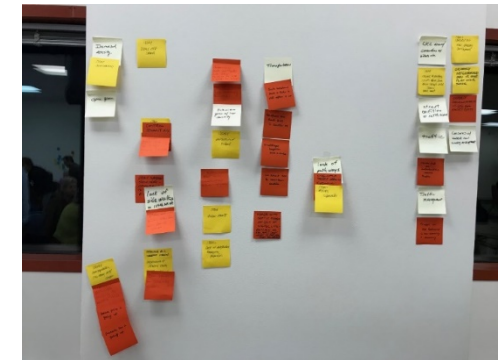
- Preparation of an Equity and Inclusion Analysis (EIA)
- Diverse Working Group members outreach and representation
- Outreach to renters, youth and seniors
- Revisions to language in plans to ensure equity and inclusion and removal of existing exclusionary text

WORKING GROUP MEMBERS AND ROLE

- Neighborhood Association
- Business community/property owners
- Kirkland Chamber and KDA
- Faith-based representative
- KAN Representatives
- Youth
- “Sounding board” for staff during process
- Diverse and active participants in process
- Solicit issues and concerns from neighborhood
- Review and comment on draft Plans
- Provide input to PC, City Council

UPDATE PROCESS

- Update existing policies
- Visioning process to revise and add vision statements
- Identify key study issues - *What do you want changed?*
- Study land use changes (if requested)
- Public outreach opportunities may be combined
- Study sessions with Boards & Commissions
- Public hearing to gather public comments
- Planning Commission recommendations
- City Council makes the final decision end of 2021



UPDATE TRANSPORTATION-LAND USE POLICIES

- Consistency with Transportation Element, ATC Plan, CKC Master Plan
- Multimodal connections between Downtown, transit centers, BRT station at NE 85th ST/I-405, CKC, employment centers (Google),
- Support future NE 85th Street Station Area Plan recommendations
- Study parking requirements, options for shared parking facilities for recreation and transit in Moss Bay
- Related to public use of rights-of-way; festival streets
- Study implementing affordable housing requirements

PROJECT STATUS

- Presented at both neighborhood association meetings
- Project Webpages created at www.kirklandwa.gov/neighborhoodplanning
- Listservs created; Framework Document on webpage
- Presented to Kirkland Youth Council, Kirkland Public Policy Board, Planning Commission, City Council
- Internal staff coordination meeting
- Public notice signs installed in 5 locations
- Finalizing draft survey questions
- Developing an Equity Impact Analysis

NEXT STEPS

- May Working Group meetings, prep for survey, workshop, mail postcard
- June Conduct workshop, survey/workshop results, draft vision statements
- July Draft plans #1, PC/Boards/Commission study sessions
- August Draft plans #2 and comment
- Sept/Oct SEPA compliance, finalize draft plans
- November Public Hearing before Planning Commission
- December City Council study session & adoption

PARTICIPATION OPPORTUNITIES

- Visit the website at [www.kirklandwa.gov/neighborhood planning](http://www.kirklandwa.gov/neighborhood_planning) (2021 update)
- Sign up for List Serv on project website to receive emails
- Take the survey on project website (when available)
- Talk to Working Group members
- Attend workshops (TBD)
- Submit comments to planningcommissioners@kirklandwa.gov
- Everest contact: Janice Coogan-Swenson, jcoogan@kirklandwa.gov or 425-587-3257
- Moss Bay contact: David Barnes, dbarnes@kirklandwa.gov or 425-587-3250



QUESTIONS AND DISCUSSION

- Do you have suggested changes to transportation (or other) policies to consider in each neighborhood?
- Are there additional transportation issues or considerations that are not listed in the memo?



END OF PRESENTATION