

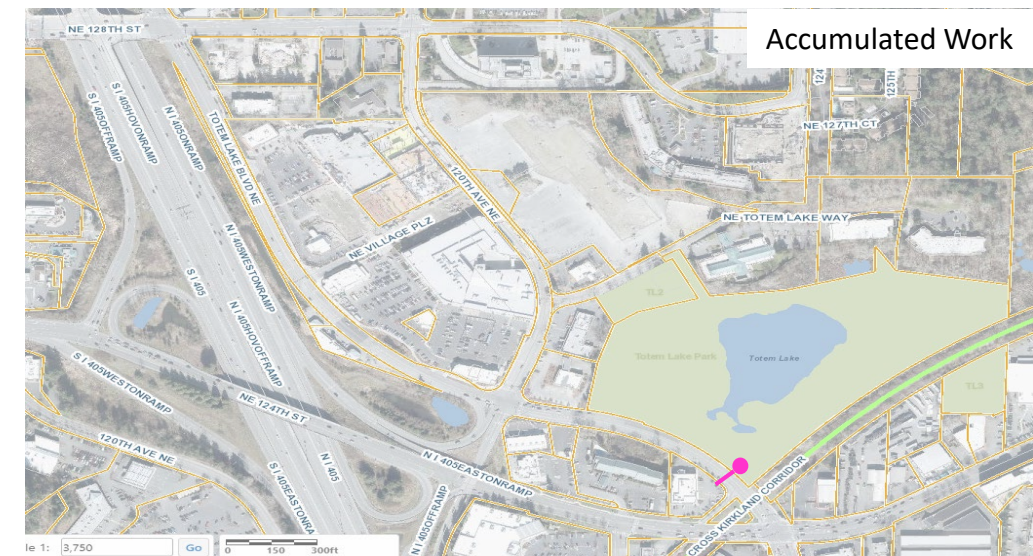
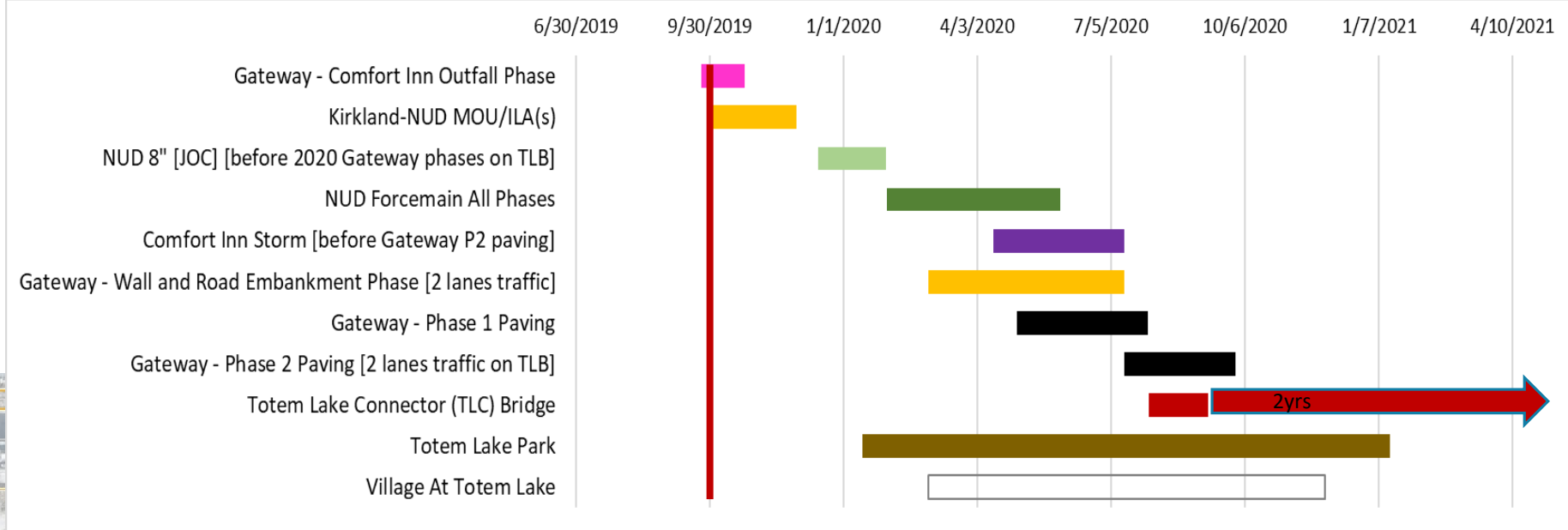
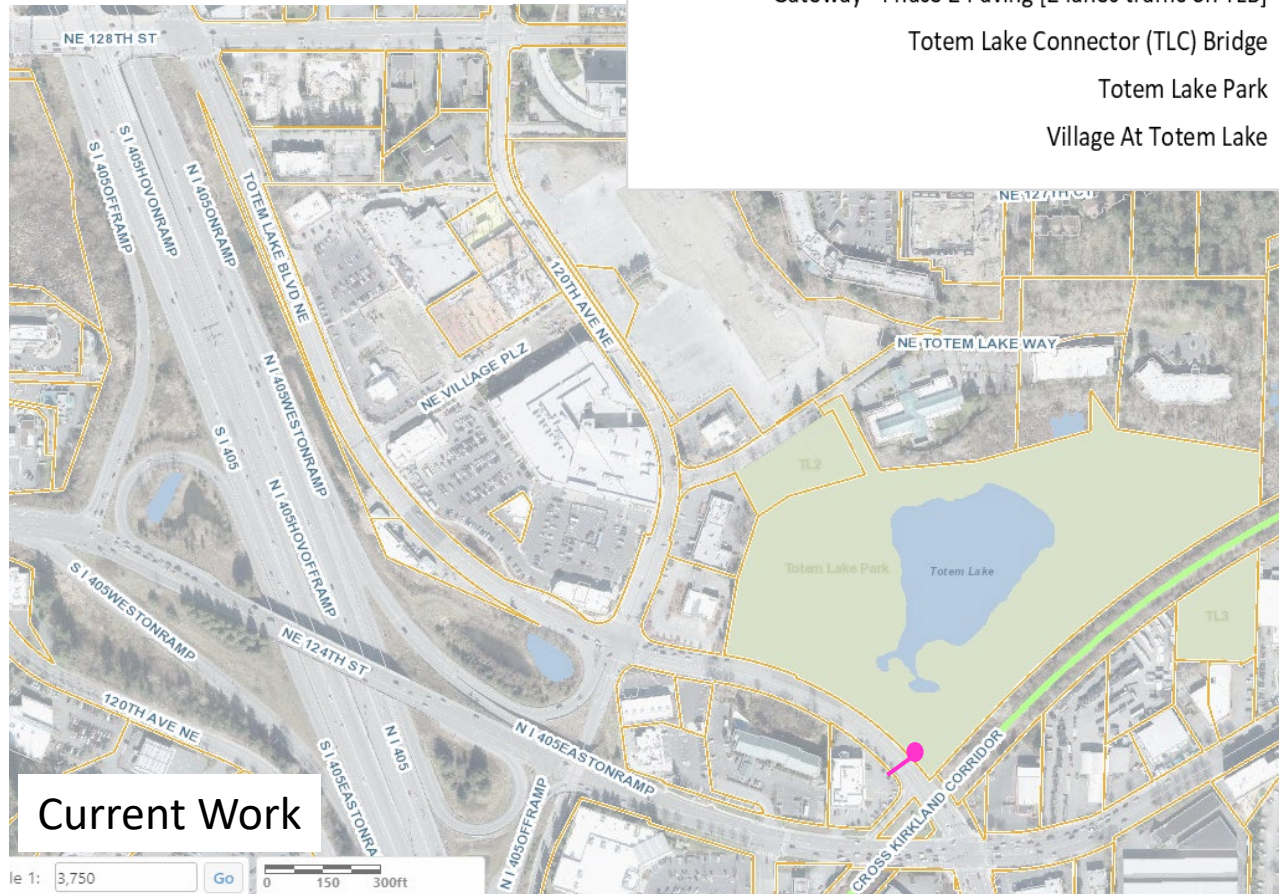
Totem Lake Coordination

Construction Projects



Totem Lake Coordination

Snapshot Date: 9/30/2019



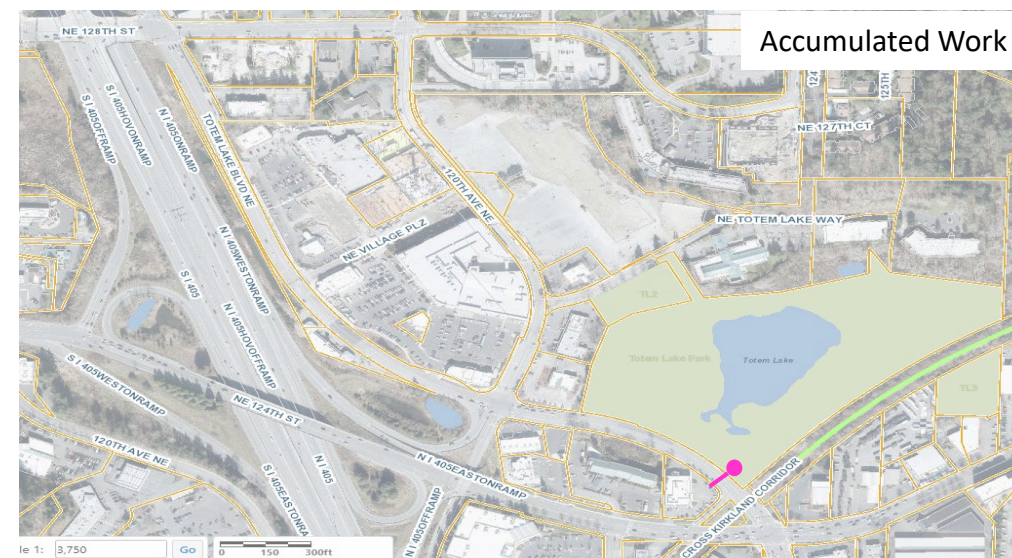
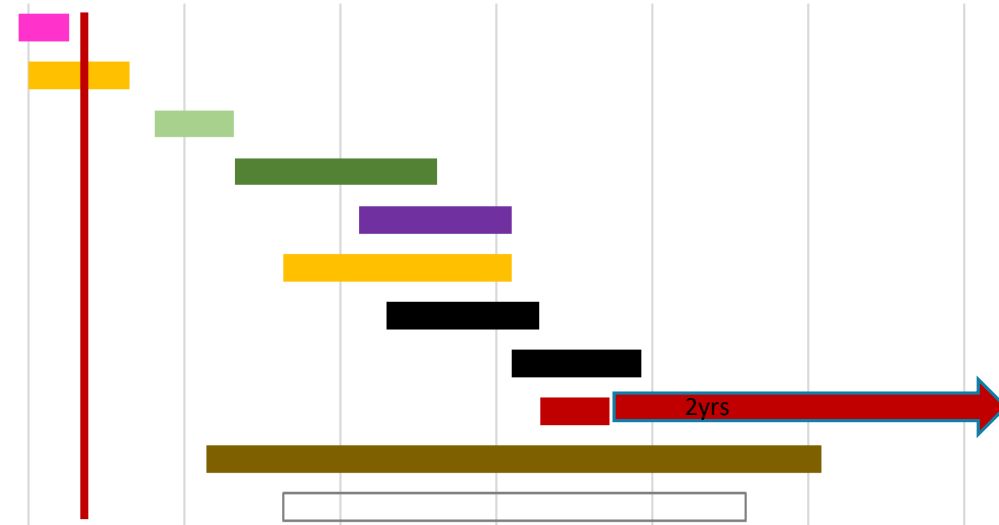
Totem Lake Coordination

Snapshot Date: 11/1/2019



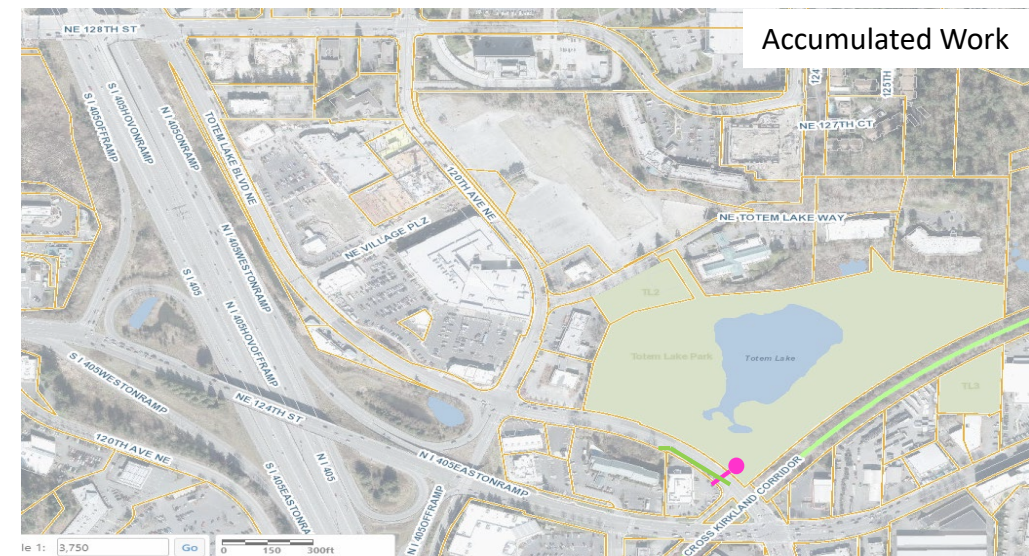
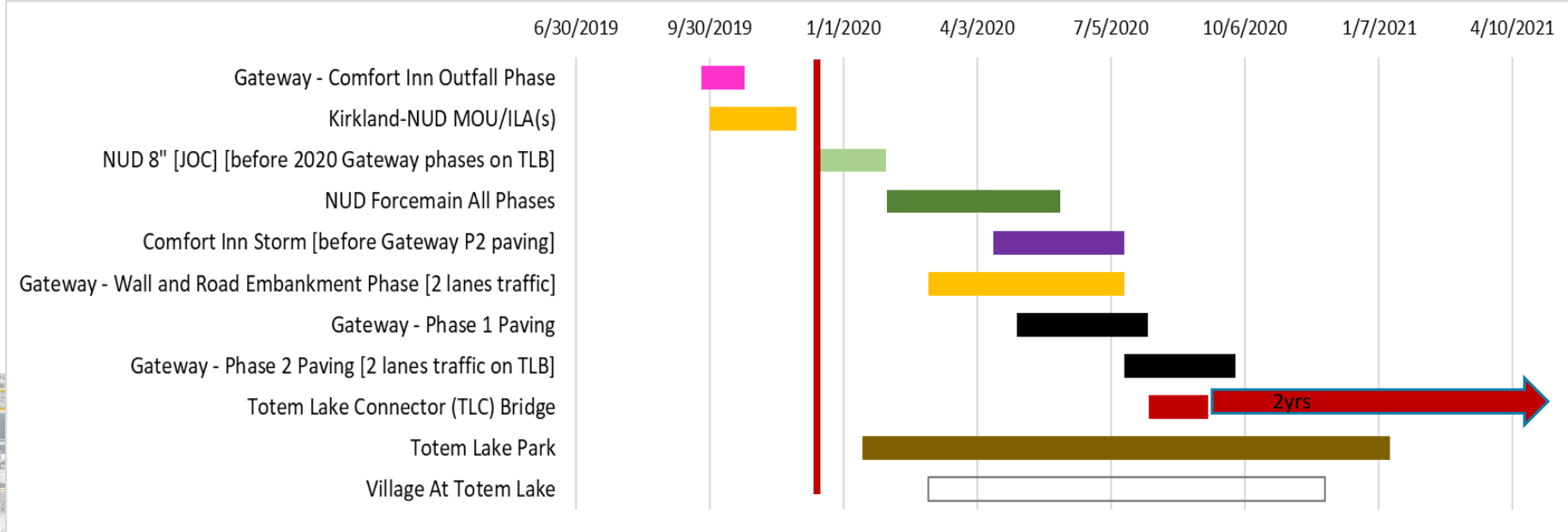
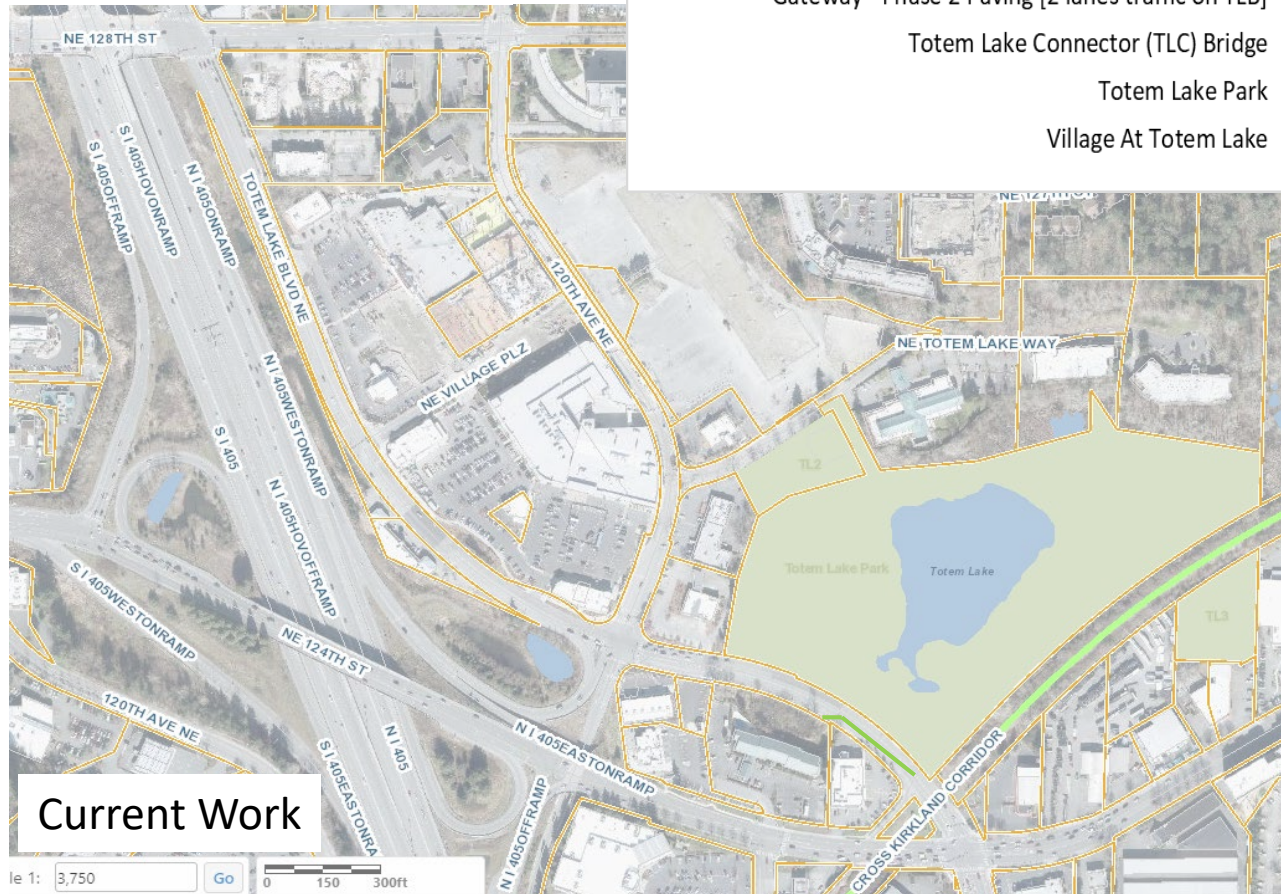
Gateway - Comfort Inn Outfall Phase
 Kirkland-NUD MOU/ILA(s)
 NUD 8" [JOC] [before 2020 Gateway phases on TLB]
 NUD Forcemain All Phases
 Comfort Inn Storm [before Gateway P2 paving]
 Gateway - Wall and Road Embankment Phase [2 lanes traffic]
 Gateway - Phase 1 Paving
 Gateway - Phase 2 Paving [2 lanes traffic on TLB]
 Totem Lake Connector (TLC) Bridge
 Totem Lake Park
 Village At Totem Lake

6/30/2019 9/30/2019 1/1/2020 4/3/2020 7/5/2020 10/6/2020 1/7/2021 4/10/2021



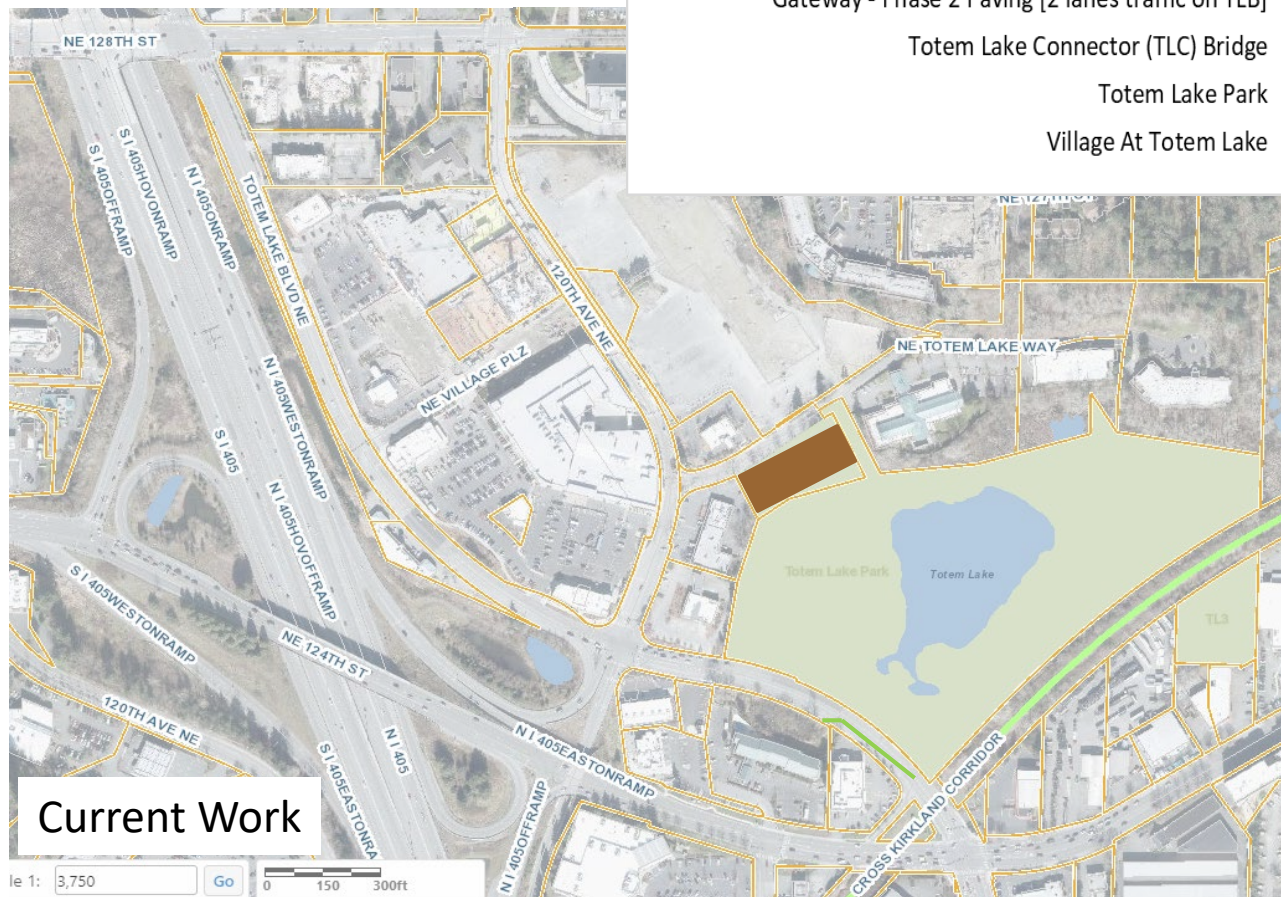
Totem Lake Coordination

Snapshot Date: 12/15/2019



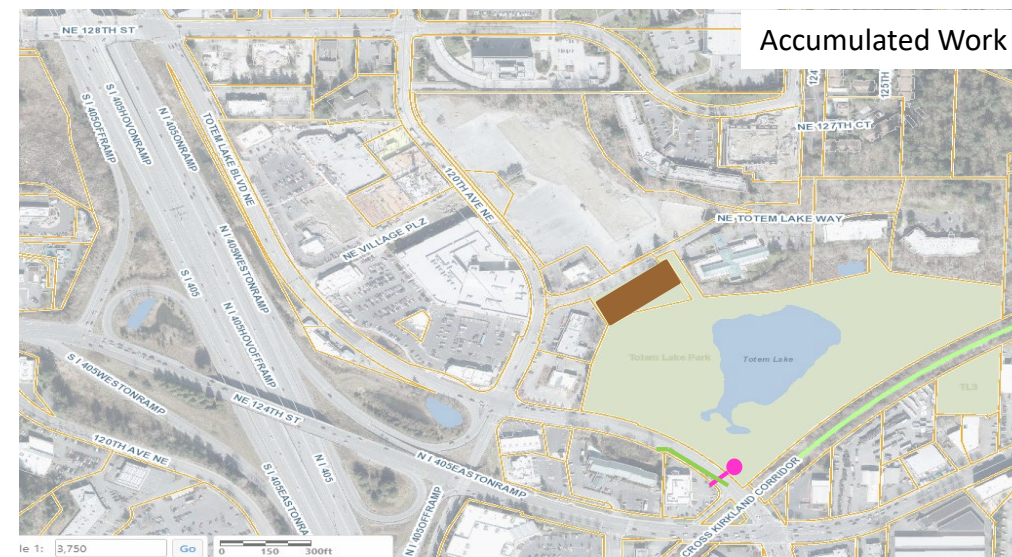
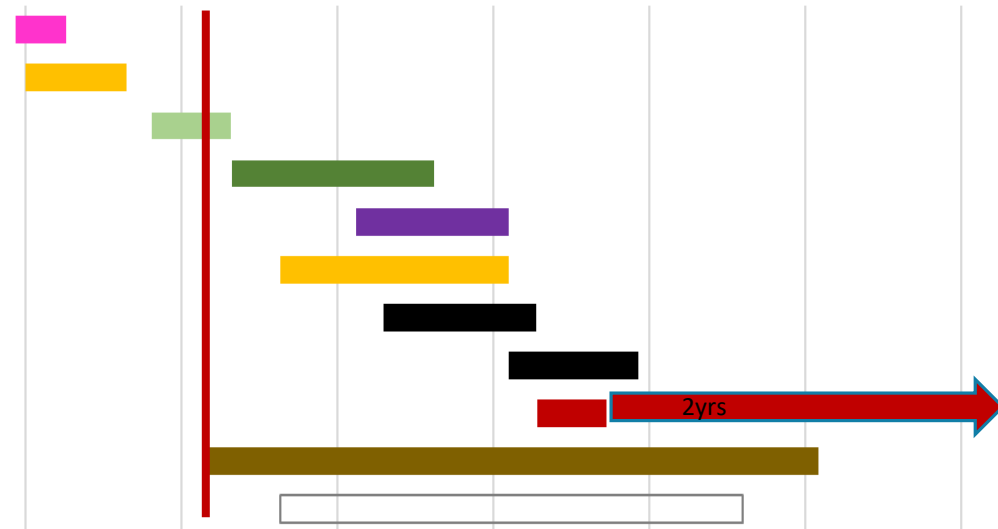
Totem Lake Coordination

Snapshot Date: 1/15/2020



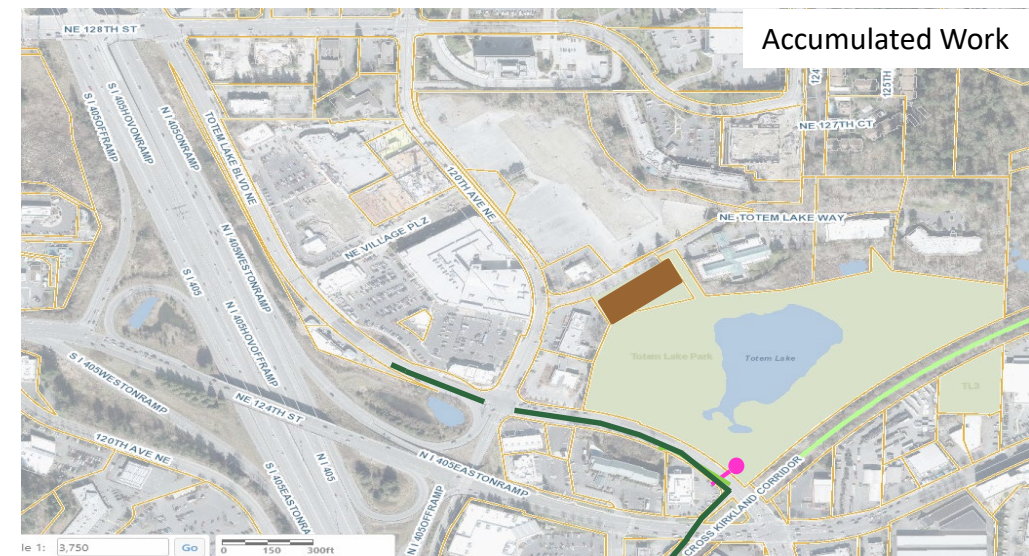
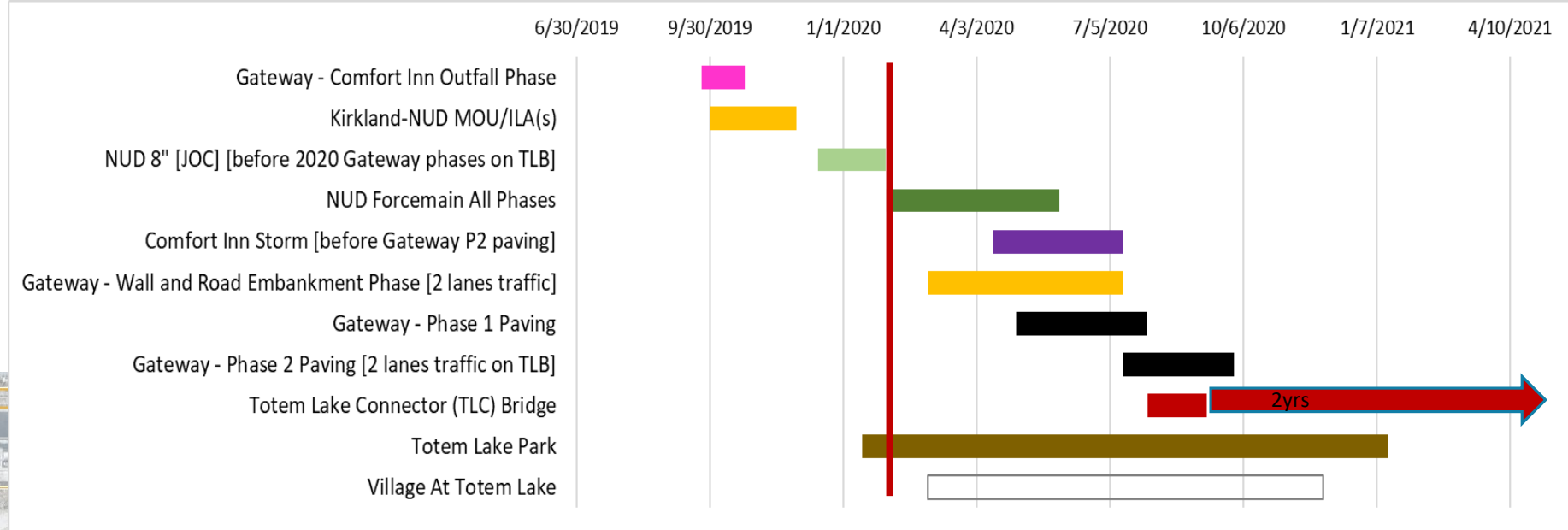
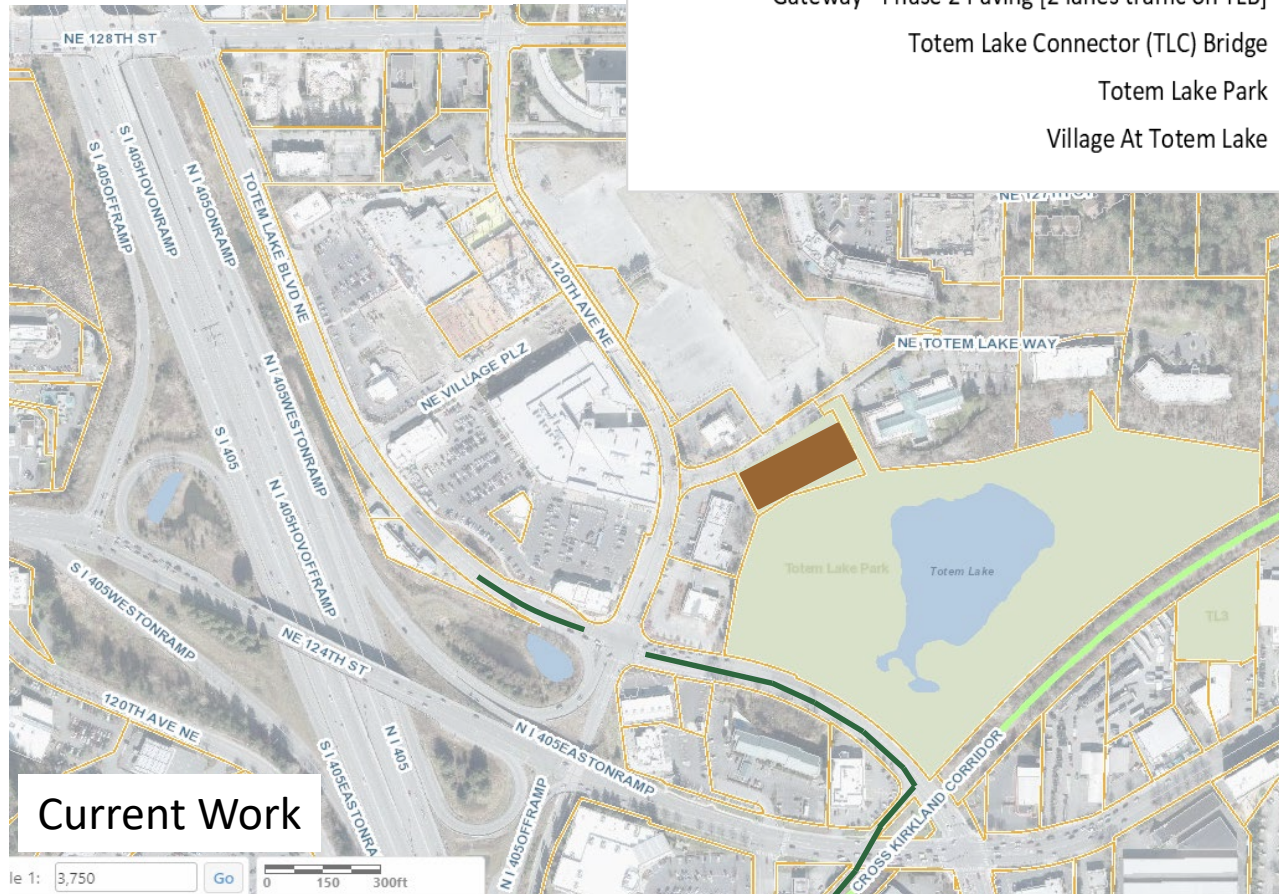
- Gateway - Comfort Inn Outfall Phase
- Kirkland-NUD MOU/ILA(s)
- NUD 8" [JOC] [before 2020 Gateway phases on TLB]
- NUD Forcemain All Phases
- Comfort Inn Storm [before Gateway P2 paving]
- Gateway - Wall and Road Embankment Phase [2 lanes traffic]
- Gateway - Phase 1 Paving
- Gateway - Phase 2 Paving [2 lanes traffic on TLB]
- Totem Lake Connector (TLC) Bridge
- Totem Lake Park
- Village At Totem Lake

6/30/2019 9/30/2019 1/1/2020 4/3/2020 7/5/2020 10/6/2020 1/7/2021 4/10/2021



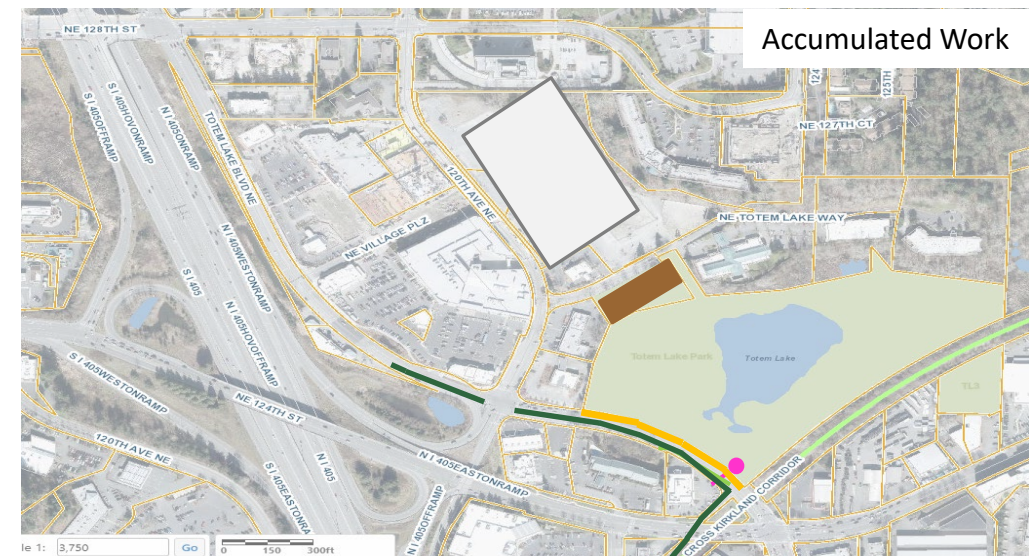
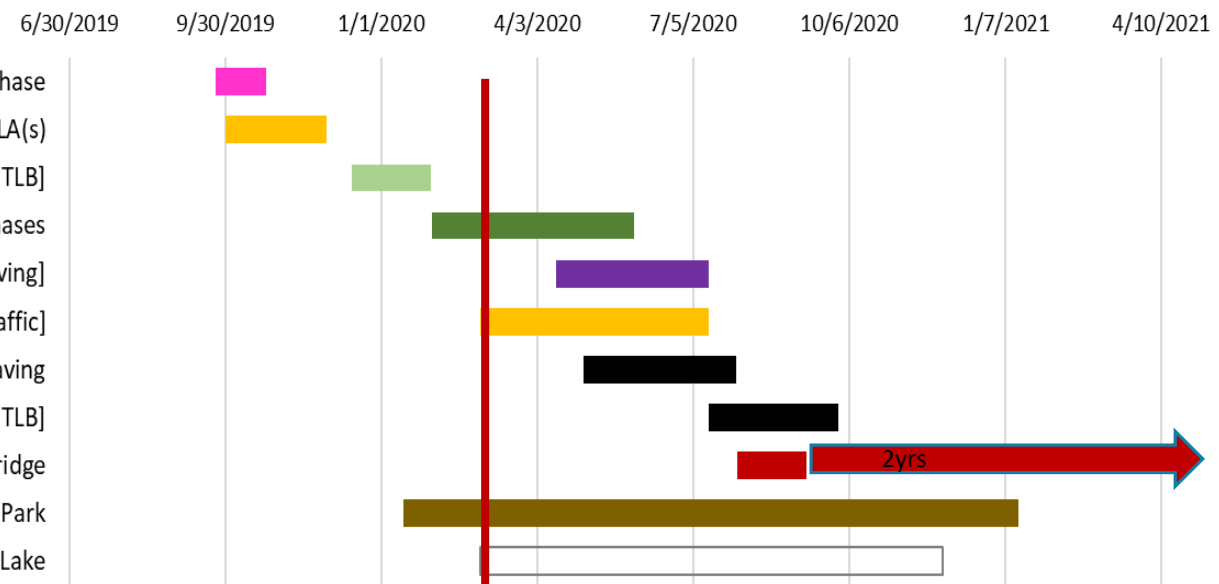
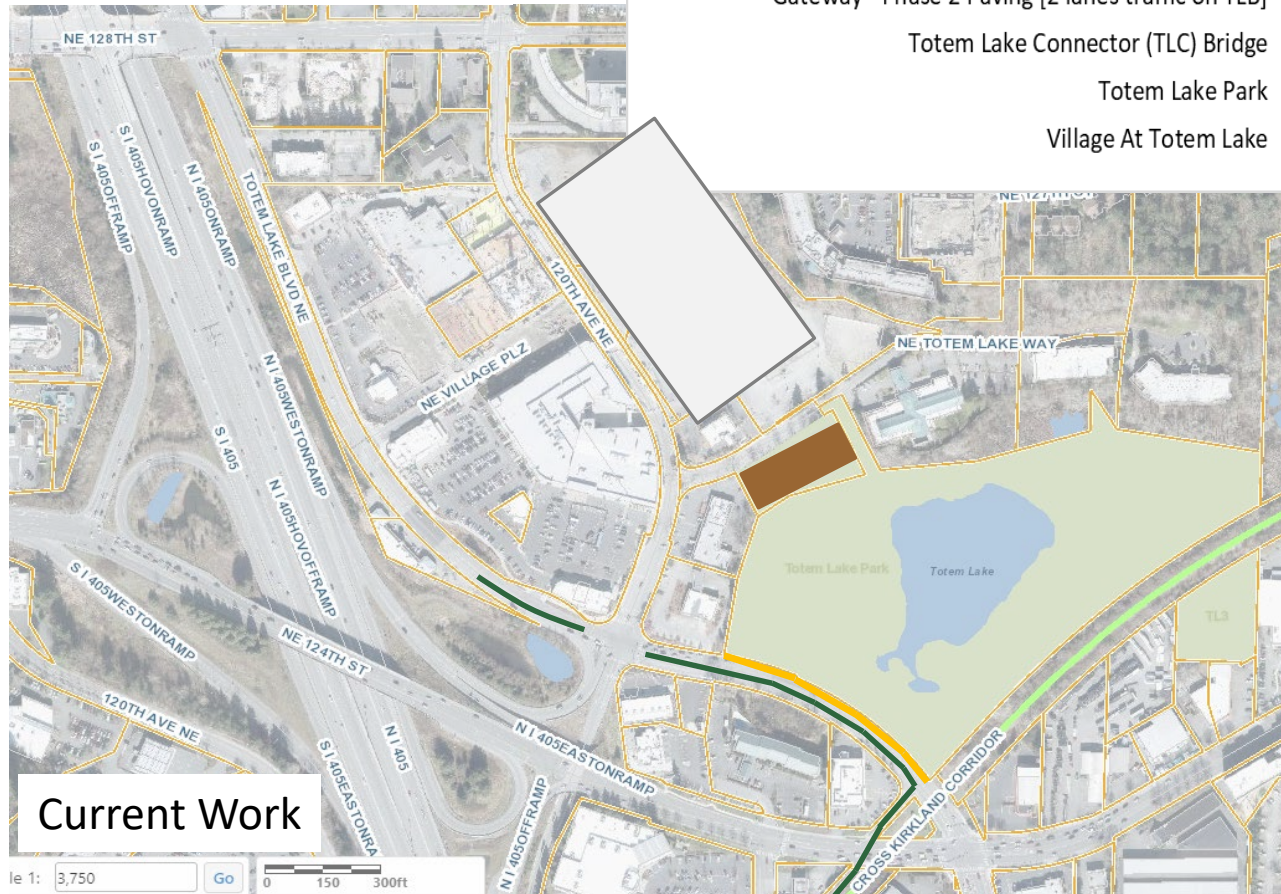
Totem Lake Coordination

Snapshot Date: 2/1/2020



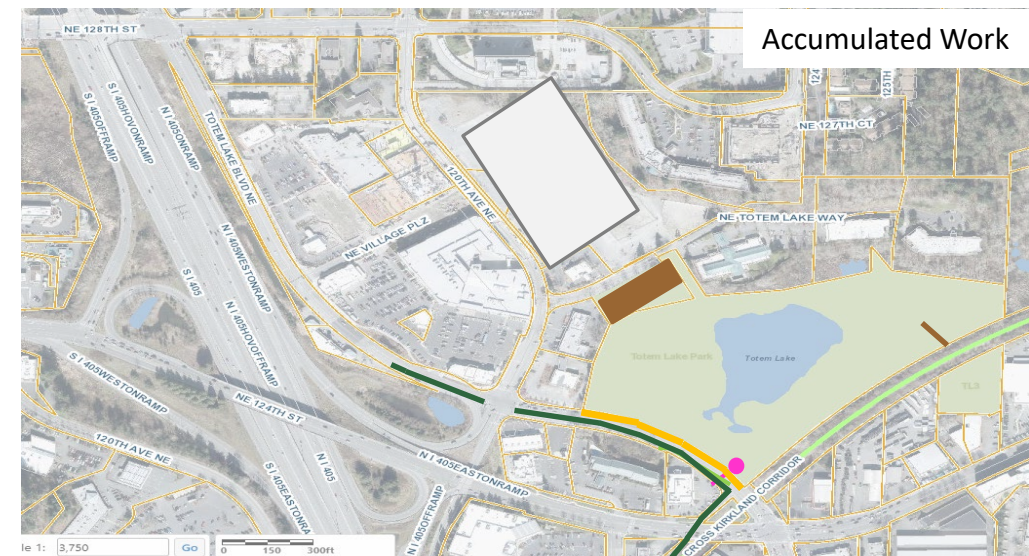
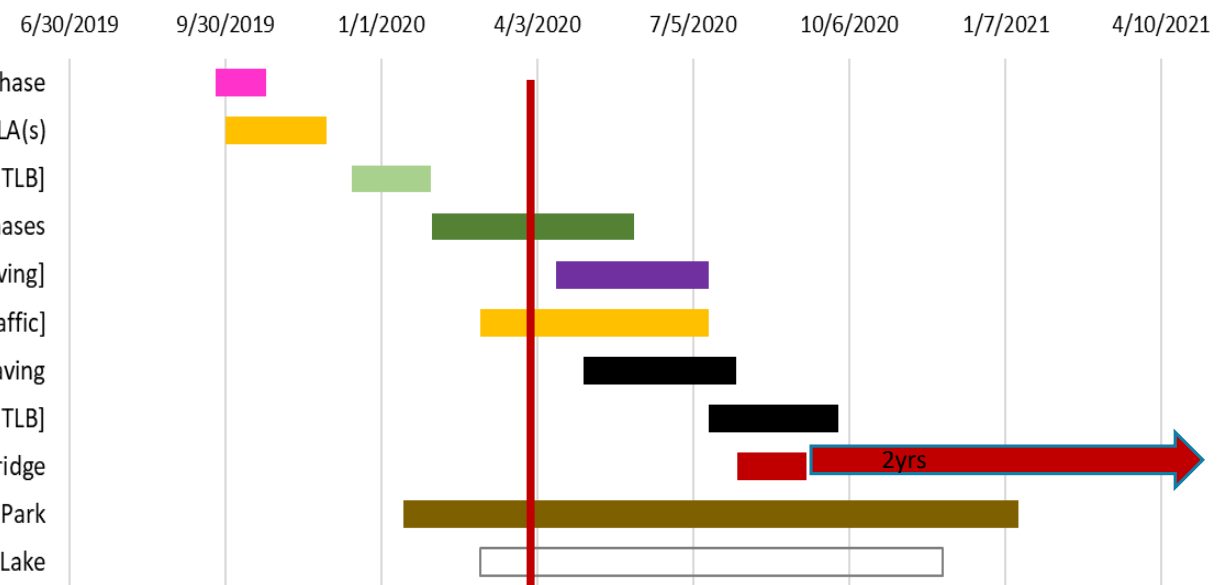
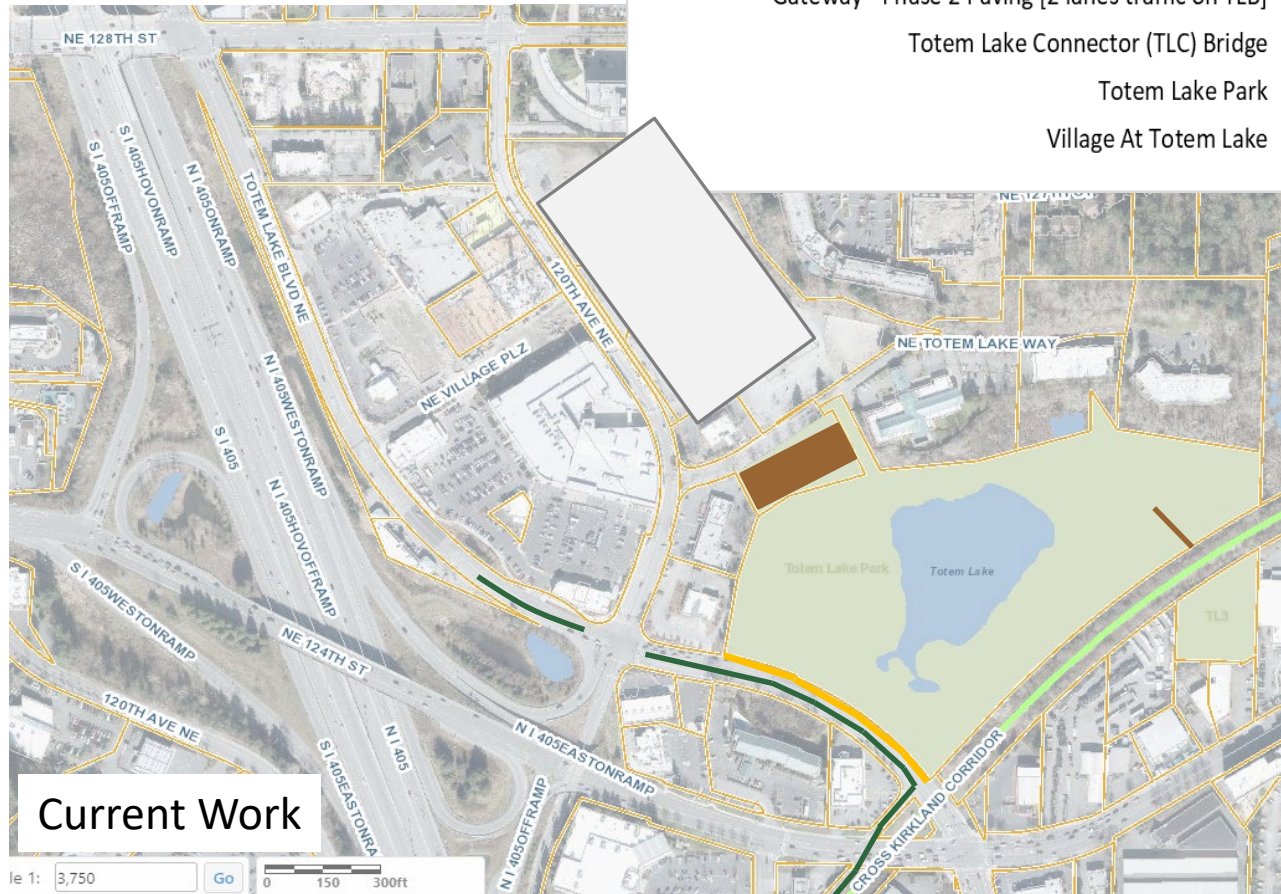
Totem Lake Coordination

Snapshot Date: 3/1/2020



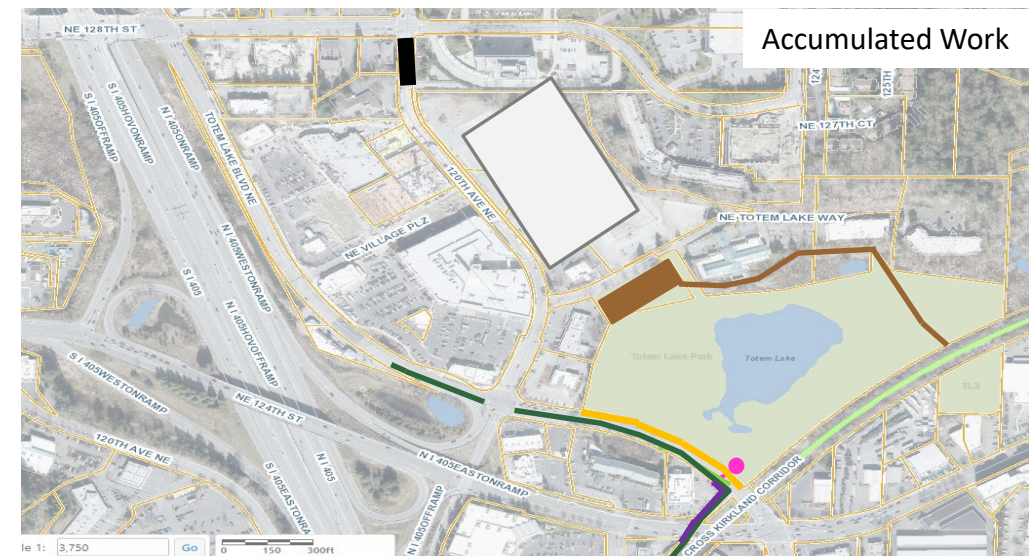
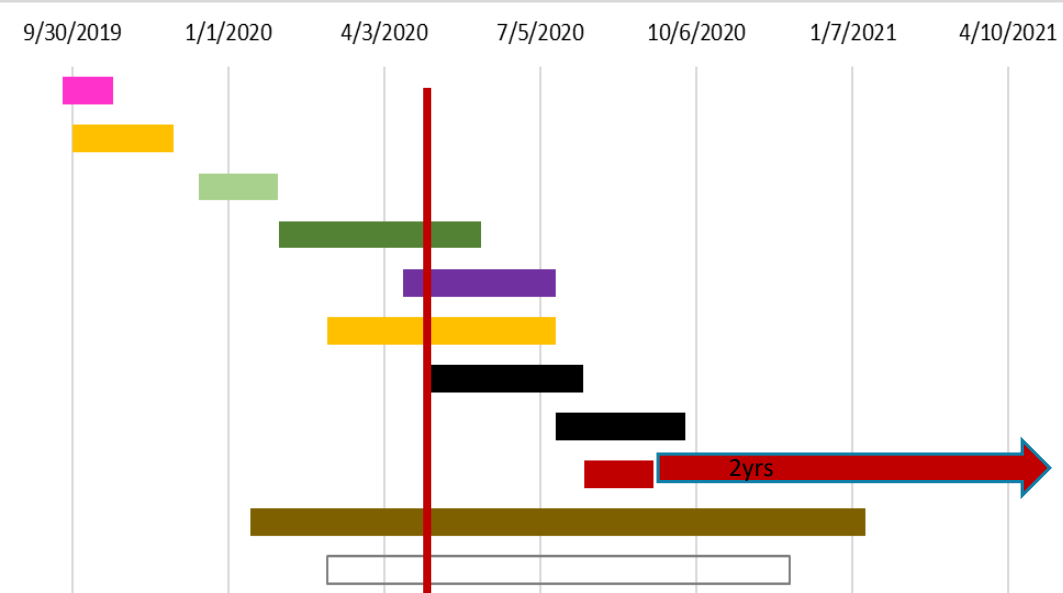
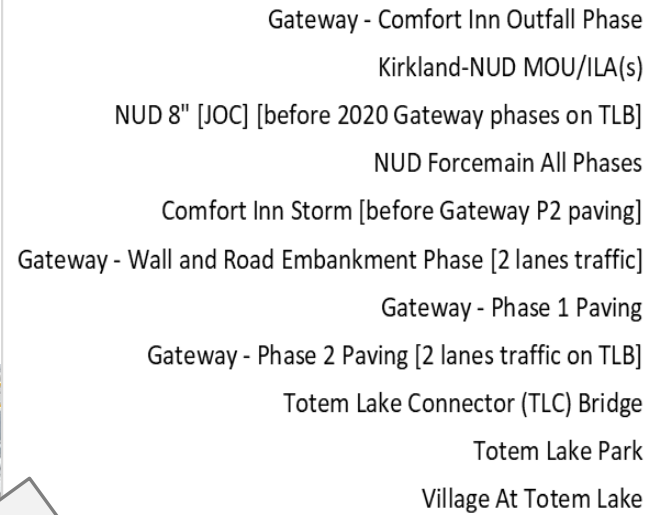
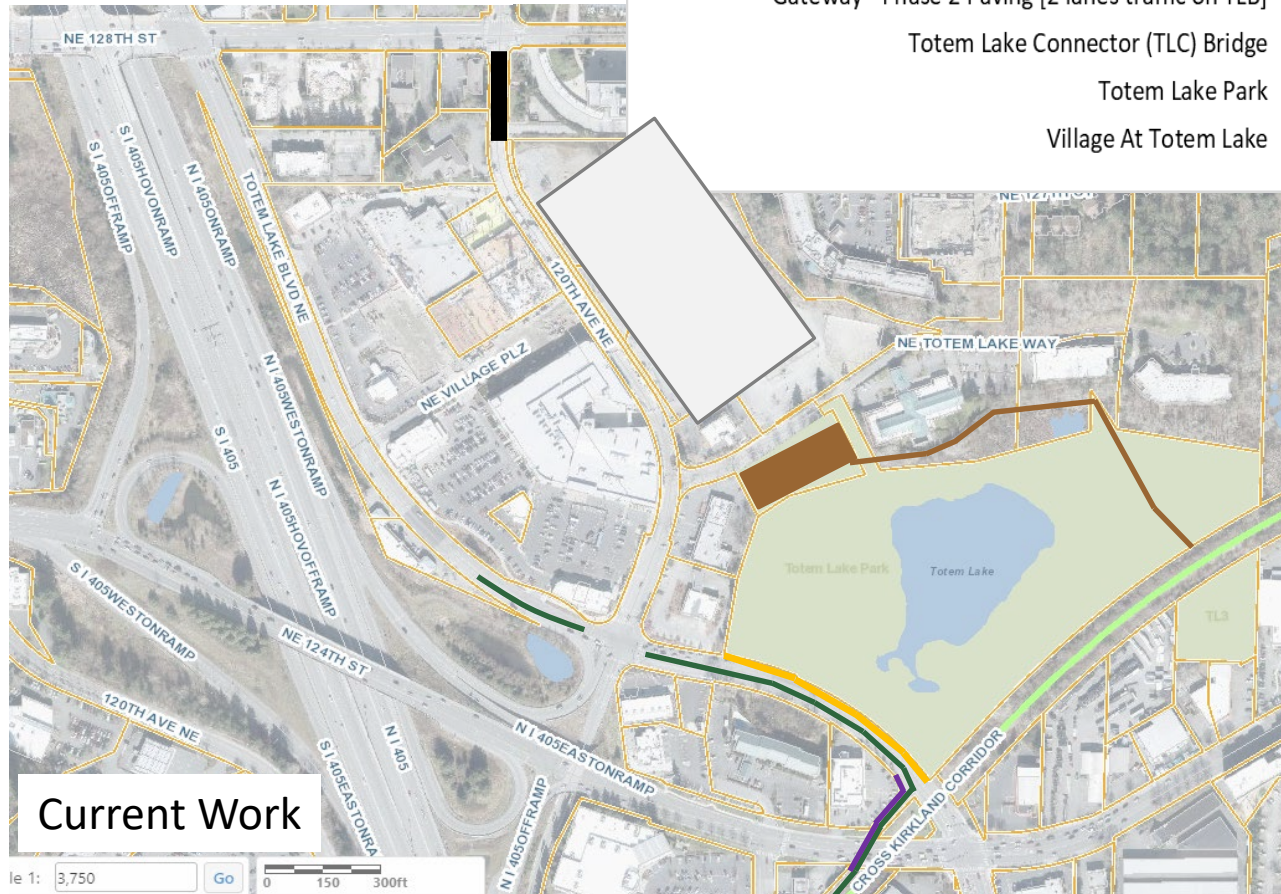
Totem Lake Coordination

Snapshot Date: 4/1/2020



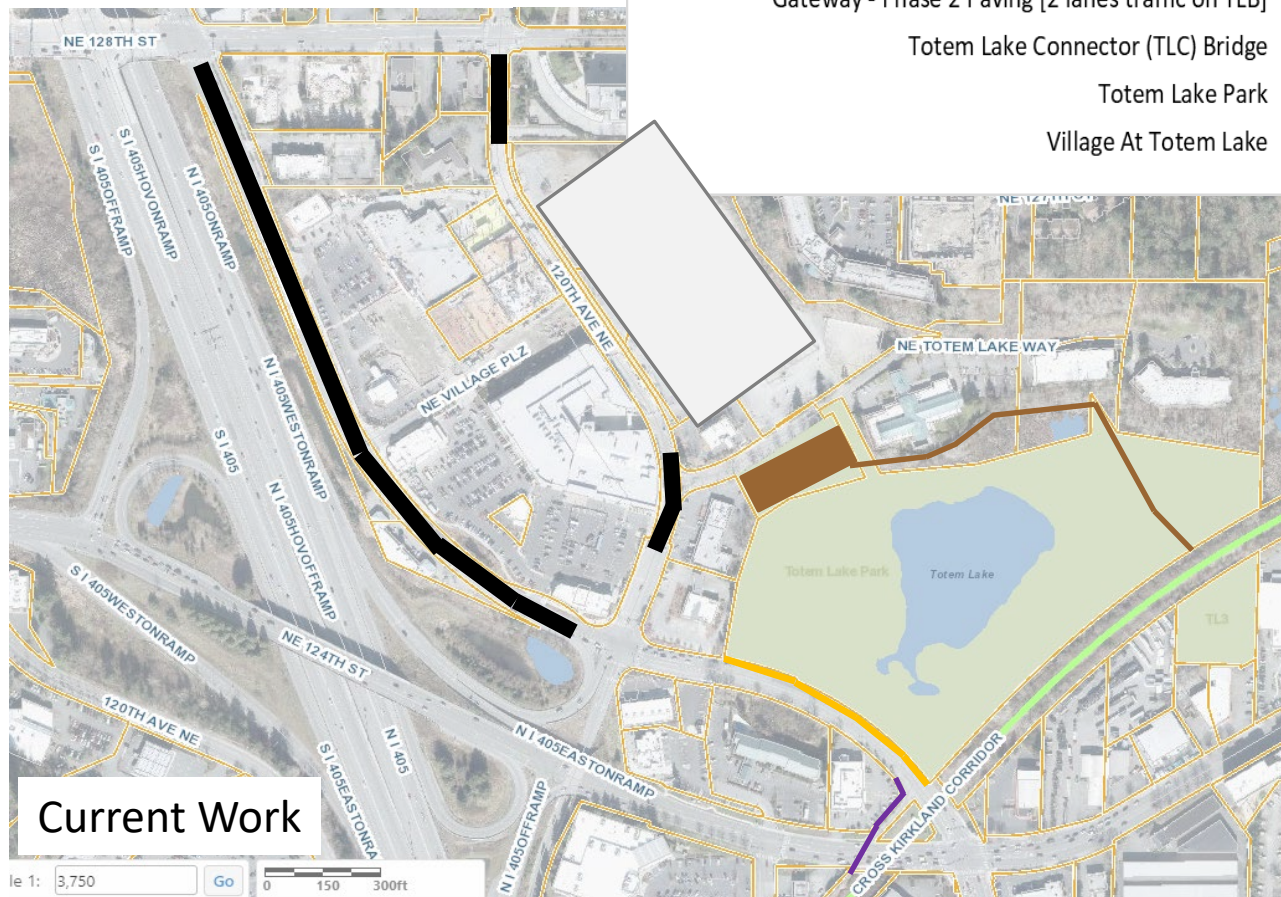
Totem Lake Coordination

Snapshot Date: 5/1/2020



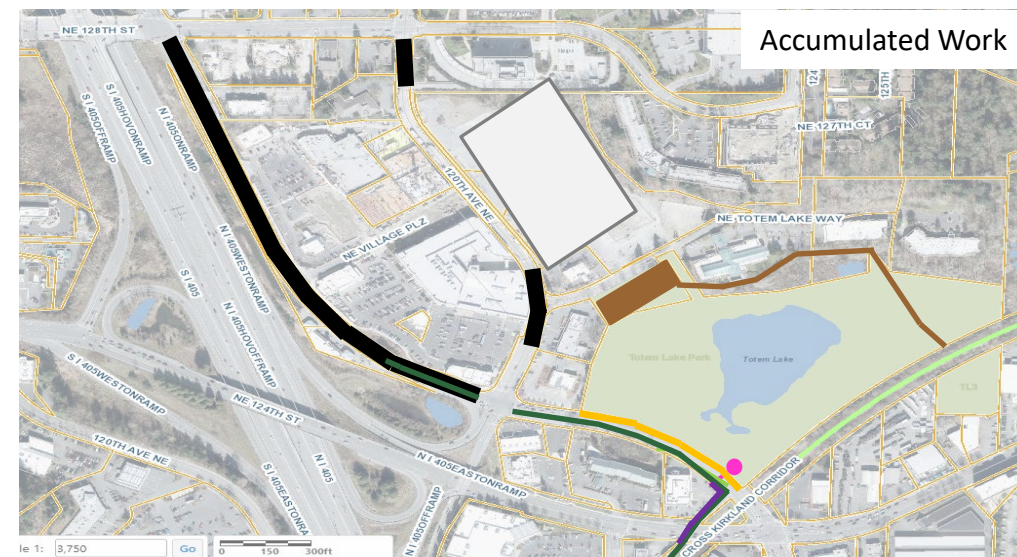
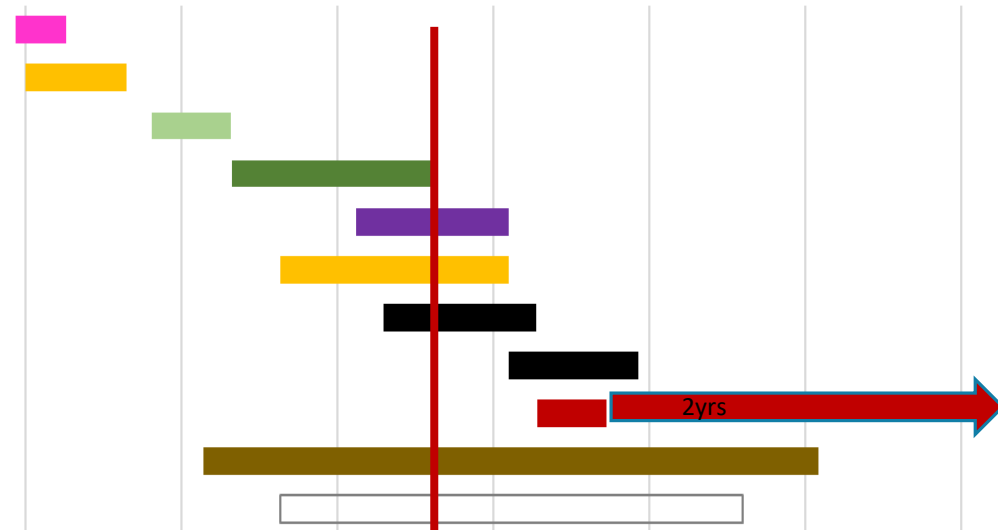
Totem Lake Coordination

Snapshot Date: 6/1/2020



- Gateway - Comfort Inn Outfall Phase
- Kirkland-NUD MOU/ILA(s)
- NUD 8" [JOC] [before 2020 Gateway phases on TLB]
- NUD Forcemain All Phases
- Comfort Inn Storm [before Gateway P2 paving]
- Gateway - Wall and Road Embankment Phase [2 lanes traffic]
- Gateway - Phase 1 Paving
- Gateway - Phase 2 Paving [2 lanes traffic on TLB]
- Totem Lake Connector (TLC) Bridge
- Totem Lake Park
- Village At Totem Lake

6/30/2019 9/30/2019 1/1/2020 4/3/2020 7/5/2020 10/6/2020 1/7/2021 4/10/2021

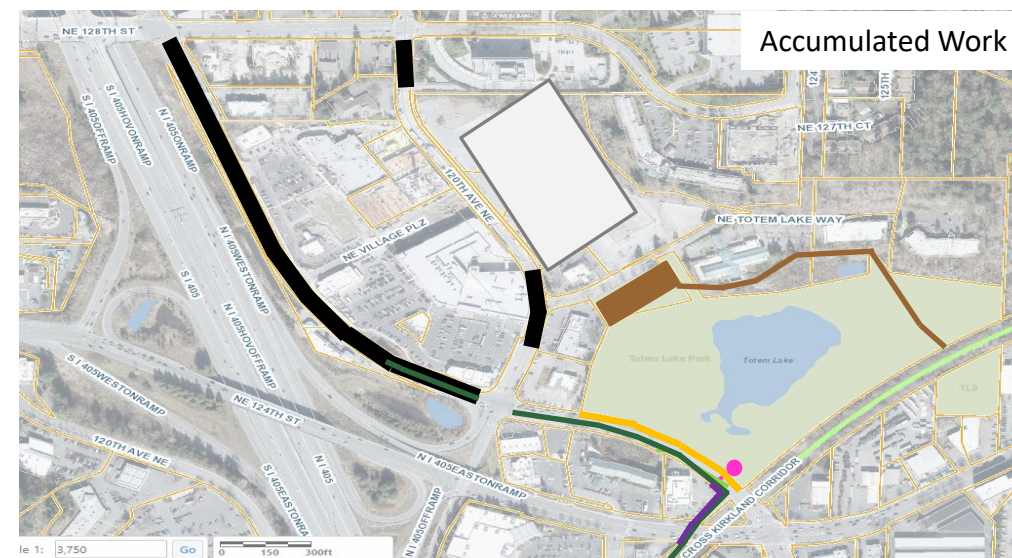
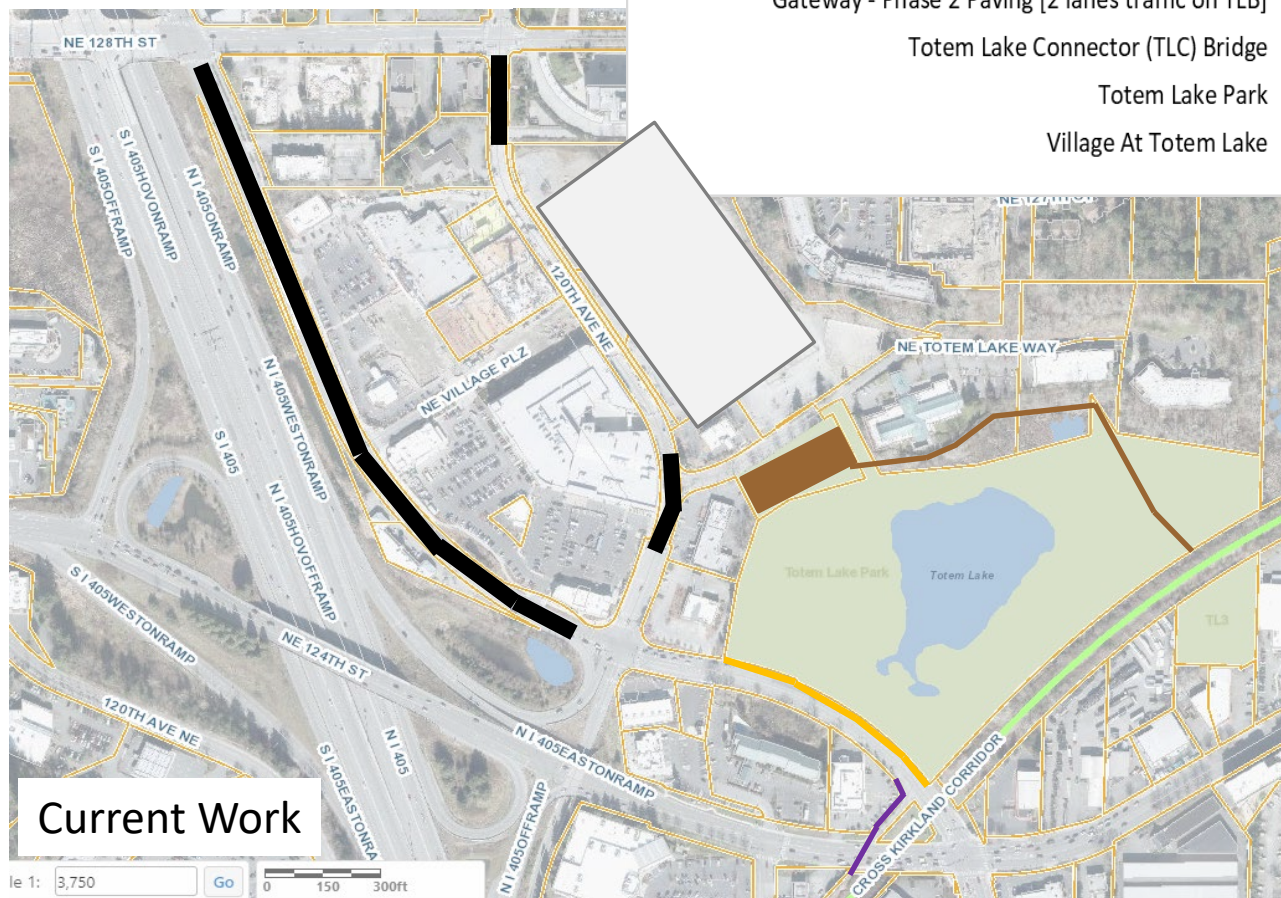
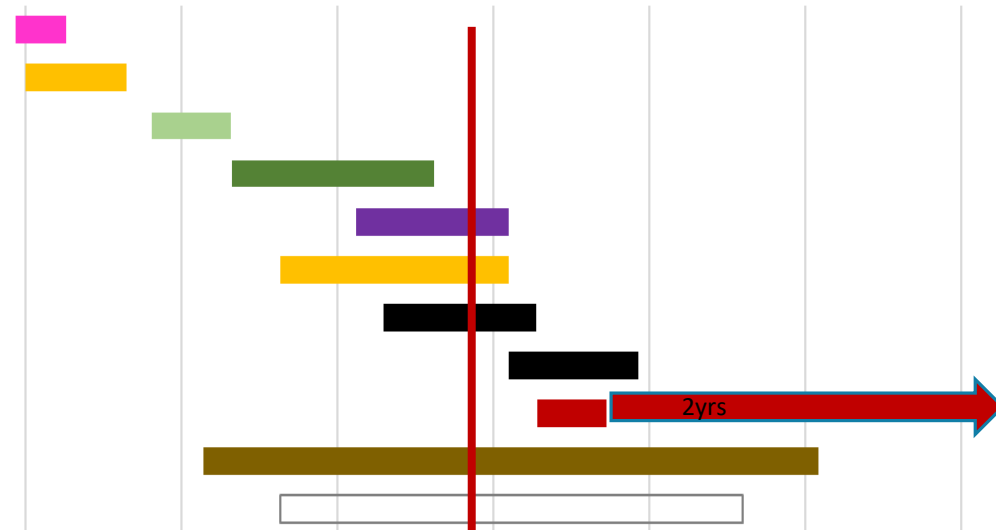


Totem Lake Coordination

Snapshot Date: 7/1/2020

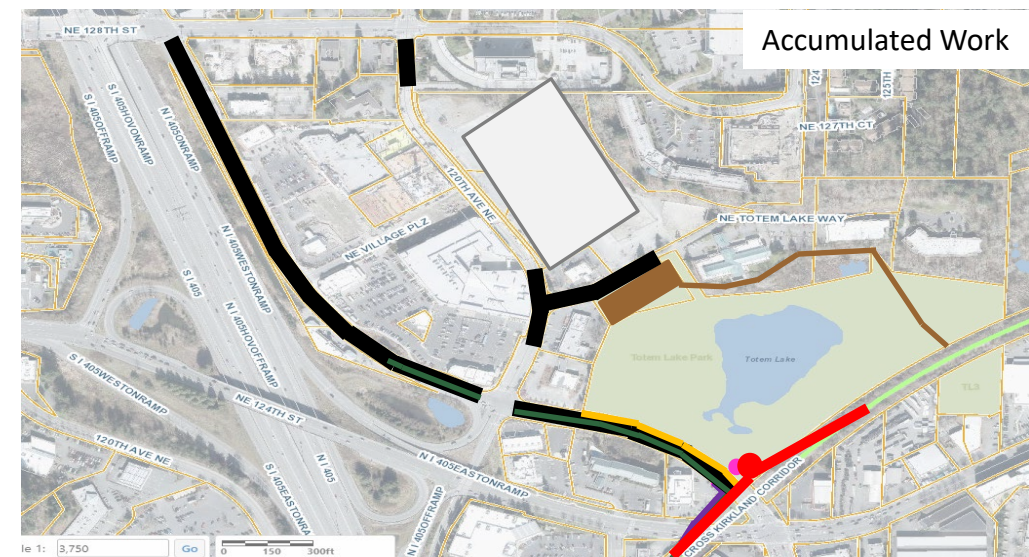
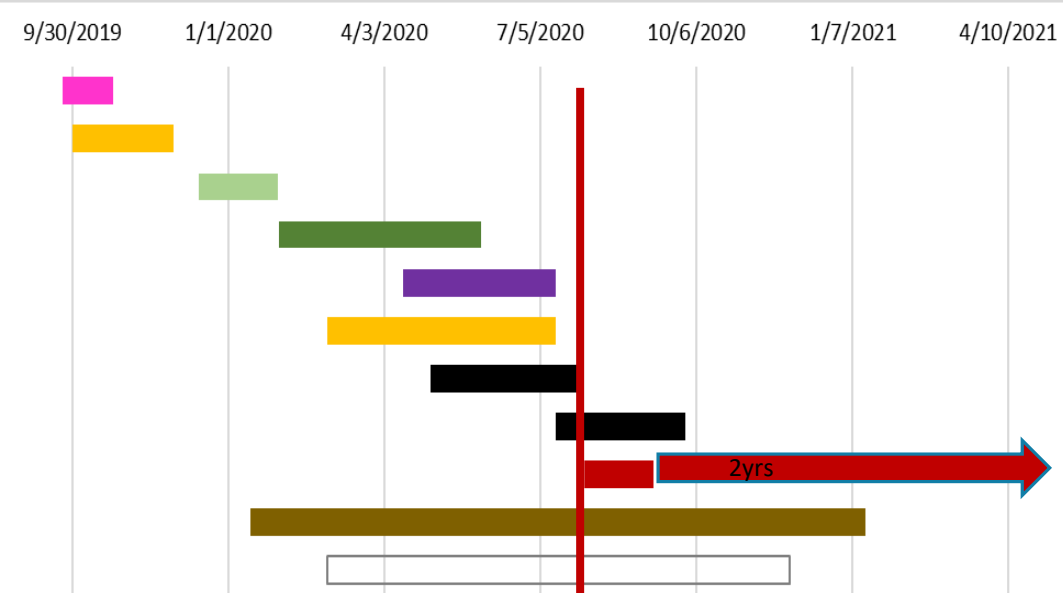
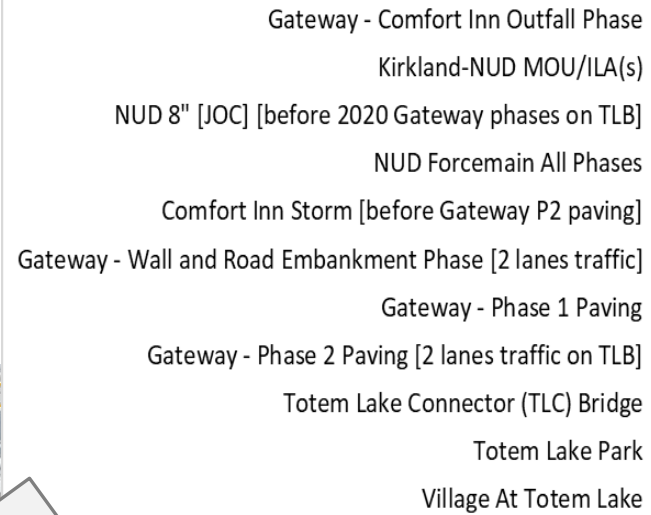
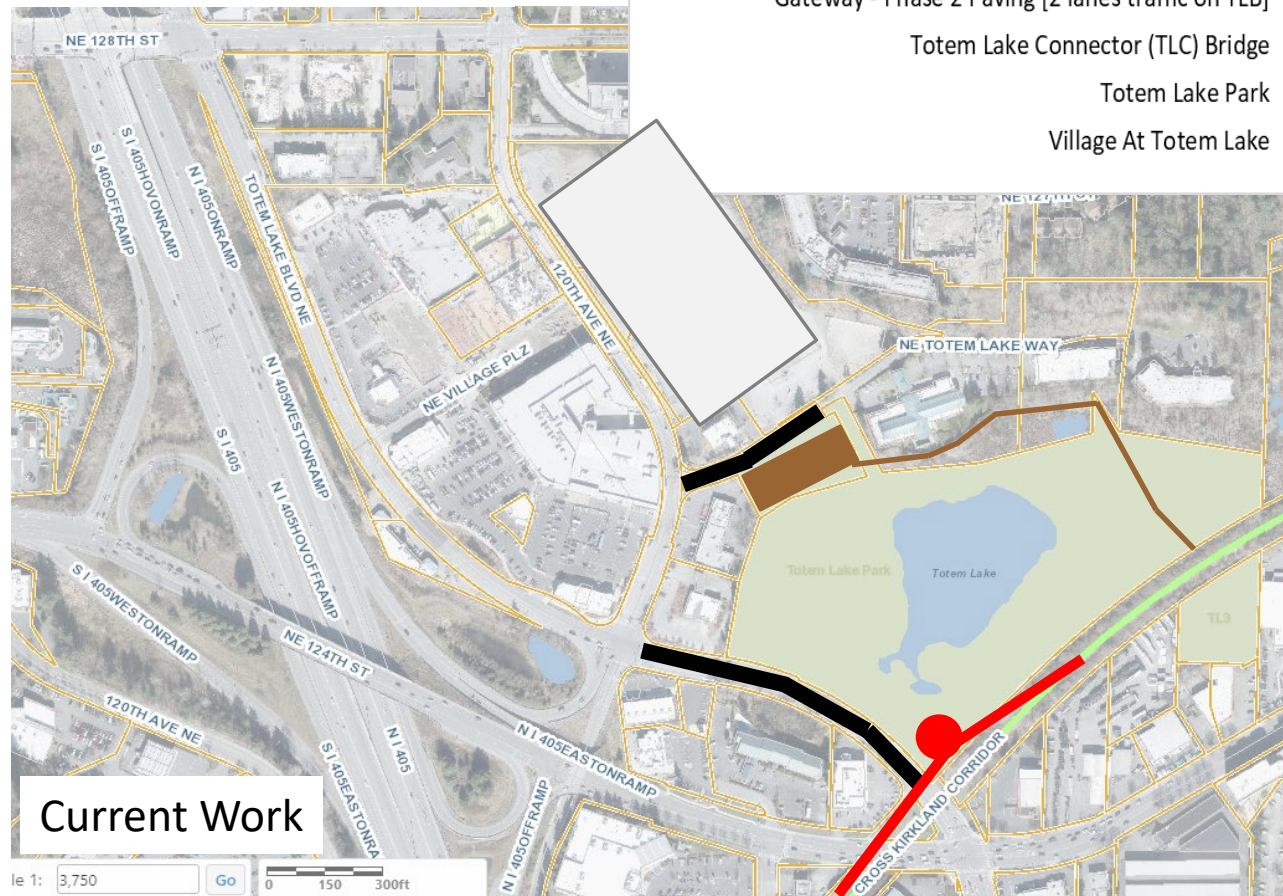
Gateway - Comfort Inn Outfall Phase
 Kirkland-NUD MOU/ILA(s)
 NUD 8" [JOC] [before 2020 Gateway phases on TLB]
 NUD Forcemain All Phases
 Comfort Inn Storm [before Gateway P2 paving]
 Gateway - Wall and Road Embankment Phase [2 lanes traffic]
 Gateway - Phase 1 Paving
 Gateway - Phase 2 Paving [2 lanes traffic on TLB]
 Totem Lake Connector (TLC) Bridge
 Totem Lake Park
 Village At Totem Lake

6/30/2019 9/30/2019 1/1/2020 4/3/2020 7/5/2020 10/6/2020 1/7/2021 4/10/2021



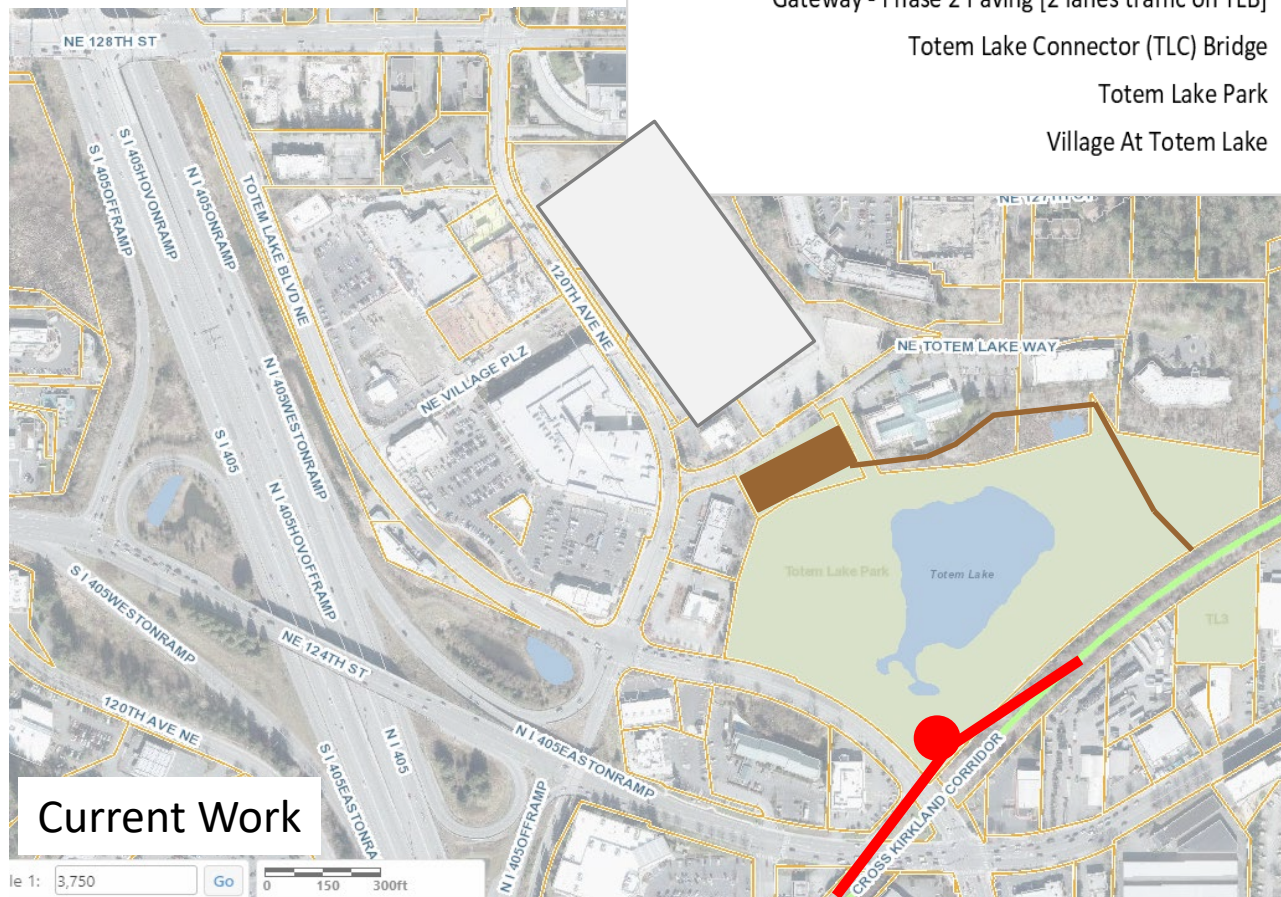
Totem Lake Coordination

Snapshot Date: 8/1/2020



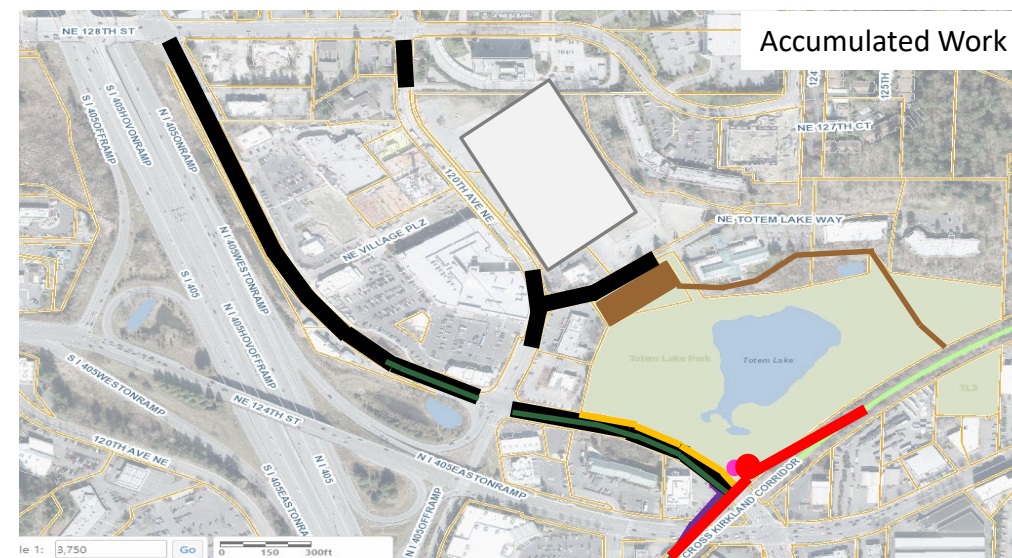
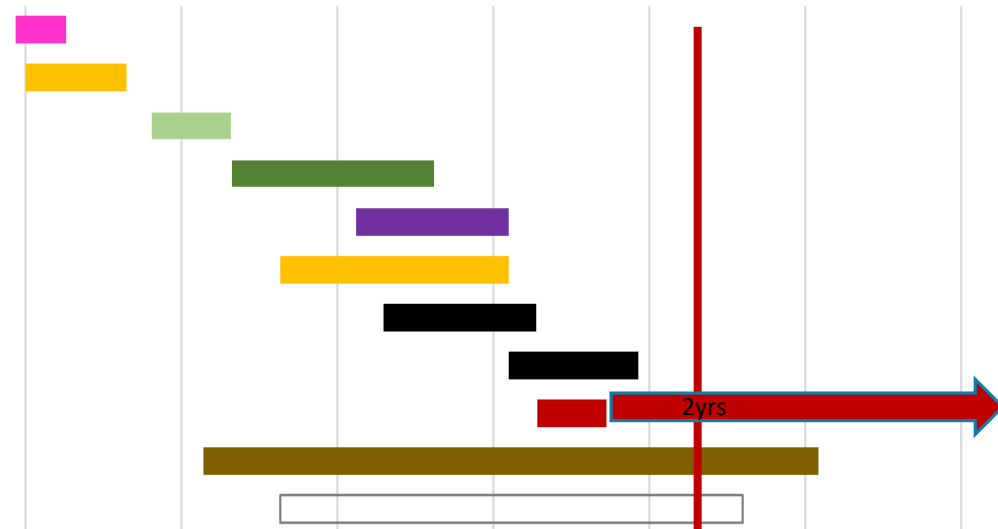
Totem Lake Coordination

Snapshot Date: 11/1/2020



- Gateway - Comfort Inn Outfall Phase
- Kirkland-NUD MOU/ILA(s)
- NUD 8" [JOC] [before 2020 Gateway phases on TLB]
- NUD Forcemain All Phases
- Comfort Inn Storm [before Gateway P2 paving]
- Gateway - Wall and Road Embankment Phase [2 lanes traffic]
- Gateway - Phase 1 Paving
- Gateway - Phase 2 Paving [2 lanes traffic on TLB]
- Totem Lake Connector (TLC) Bridge
- Totem Lake Park
- Village At Totem Lake

6/30/2019 9/30/2019 1/1/2020 4/3/2020 7/5/2020 10/6/2020 1/7/2021 4/10/2021



Totem Lake Coordination

Needs	daily	weekly	notes
Schedule tracking	x		
Change management resolution	x		
Traffic control	x		
Outreach	x		
Financial check-in [incl TIB invoicing]		x	
PM coordination		x	
Maintenance center coordination		x	
NUD coordination		x	



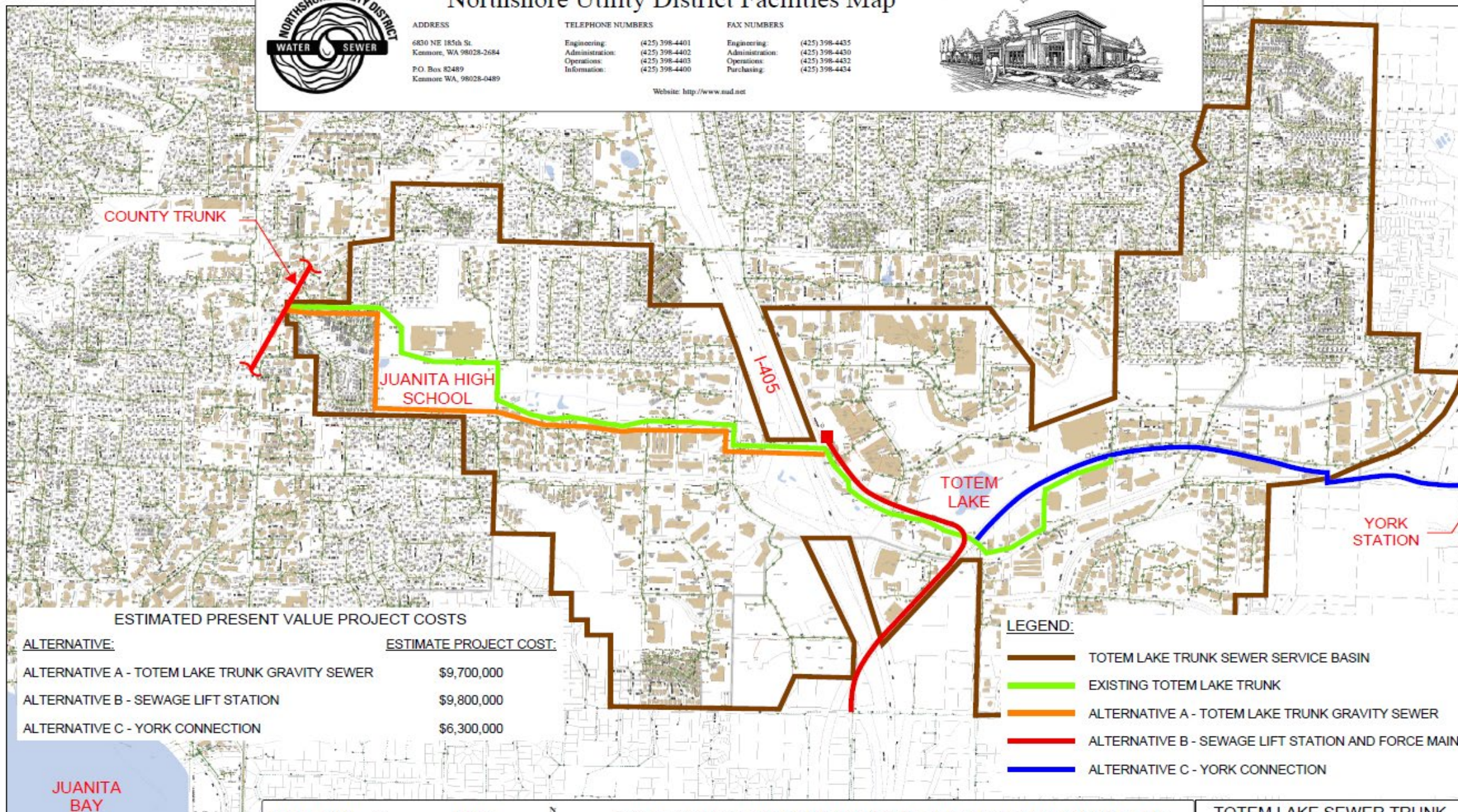
Northshore Utility District Facilities Map

ADDRESS
6830 NE 185th St.
Kenmore, WA 98028-2684
P.O. Box 82489
Kenmore WA, 98028-0489

TELEPHONE NUMBERS
Engineering: (425) 398-4401
Administration: (425) 398-4402
Operations: (425) 398-4403
Information: (425) 398-4400

FAX NUMBERS
Engineering: (425) 398-4435
Administration: (425) 398-4430
Operations: (425) 398-4432
Purchasing: (425) 398-4434

Website: <http://www.nud.net>



TOTEM LAKE SEWER TRUNK

Totem Lake Coordination

- Gateway [Comfort Inn Outfall]
- NUD 8" [JOC]
- Forcemain Phase 1 & 2
- Comfort Inn [complete before Gateway P2 paving]
- Gateway [wall and road rebuild][2 lanes traffic]
- Gateway P1 Paving
- Gateway P2 Paving
- TLC
- Totem Lake Park
- Village At Totem Lake

6/30/2019

9/30/2019

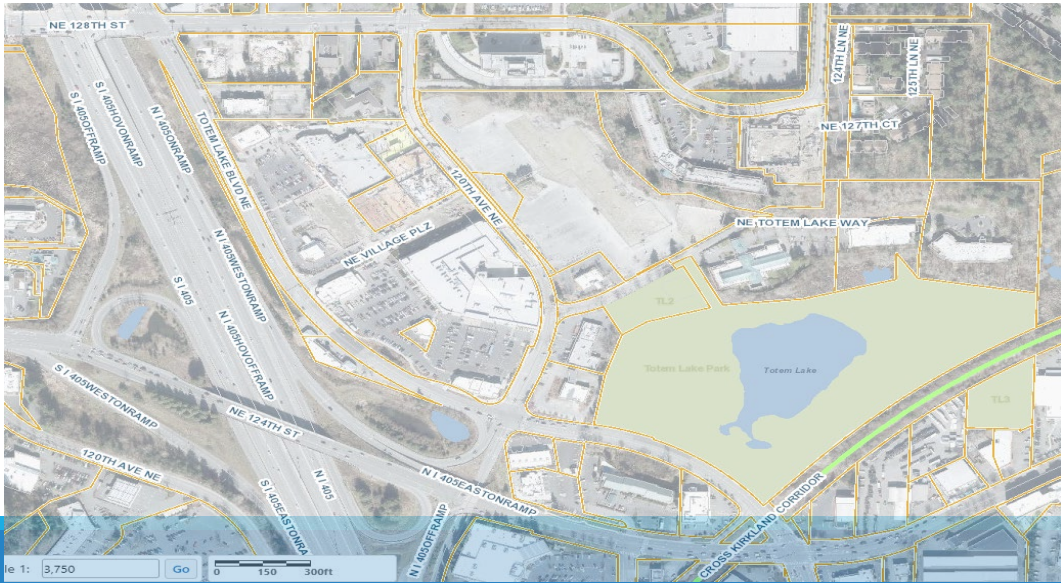
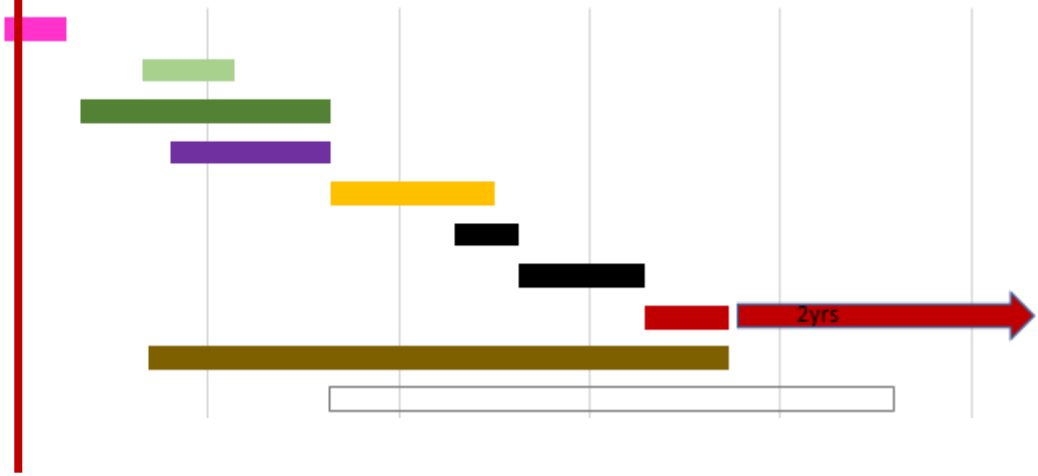
1/1/2020

4/3/2020

7/5/2020

10/6/2020

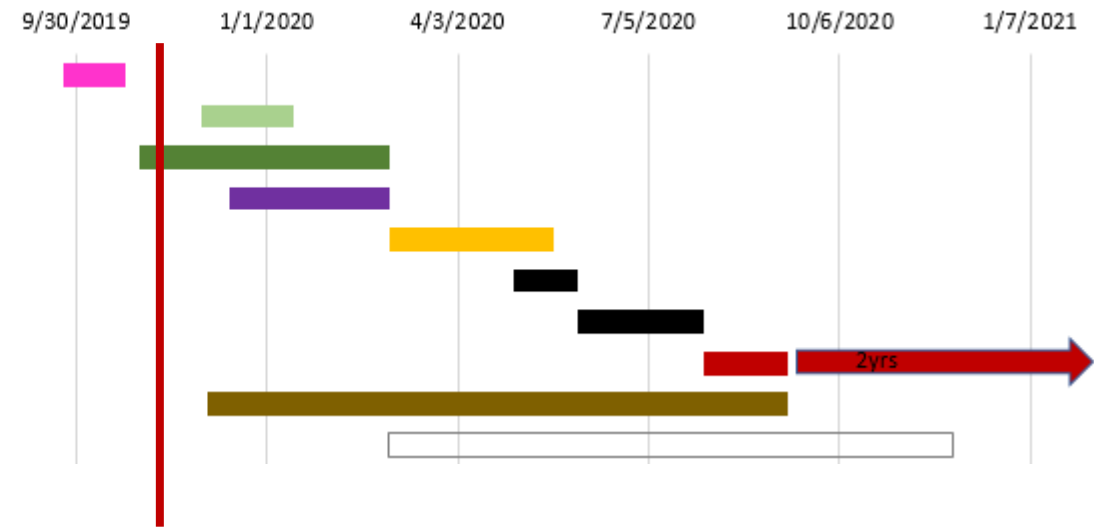
1/7/2021



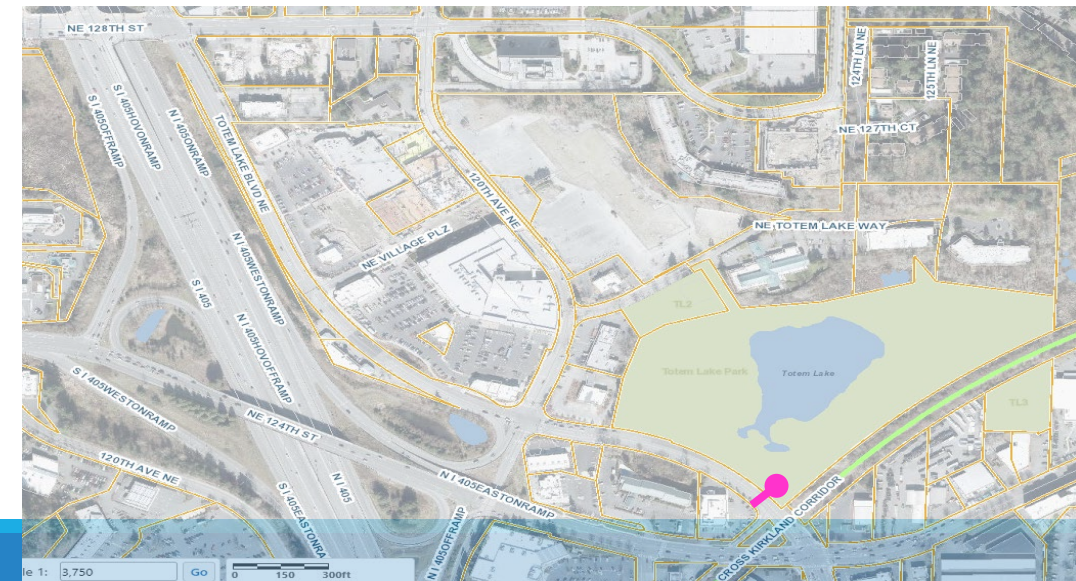
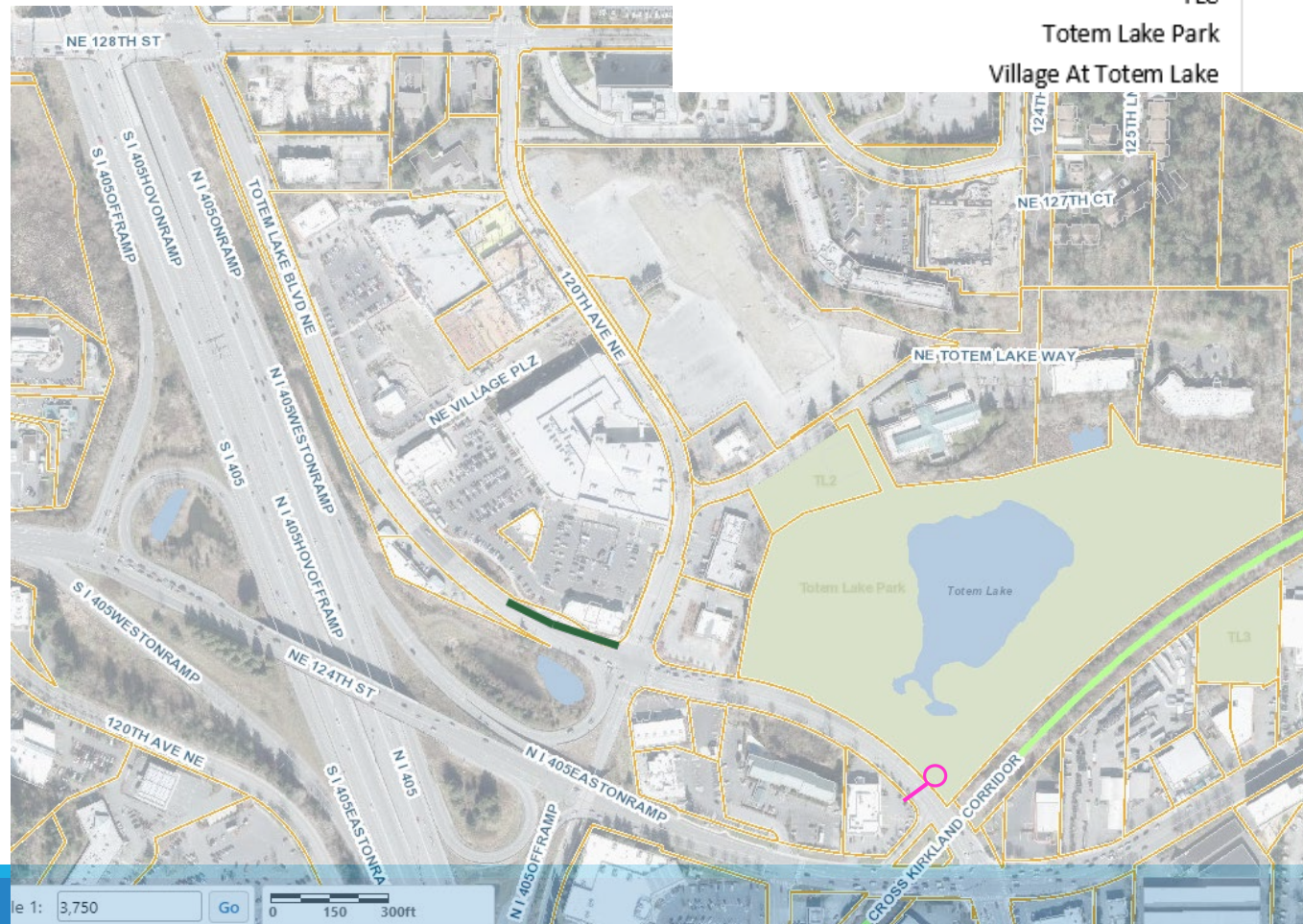
Totem Lake Coordination

6/30/2019

- Gateway [Comfort Inn Outfall]
- NUD 8" [JOC]
- Forcemain Phase 1 & 2
- Comfort Inn [complete before Gateway P2 paving]
- Gateway [wall and road rebuild][2 lanes traffic]
- Gateway P1 Paving
- Gateway P2 Paving
- TLC
- Totem Lake Park
- Village At Totem Lake

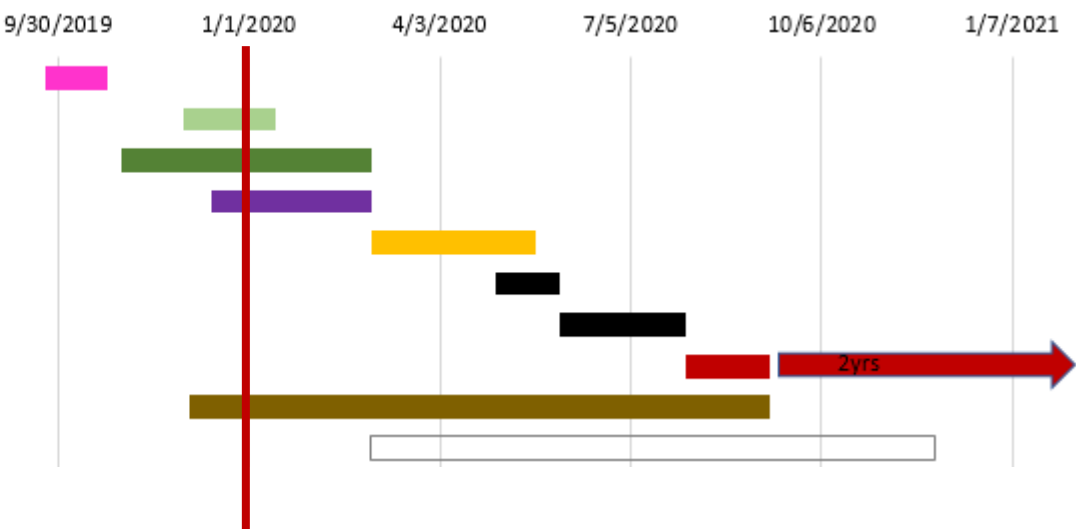
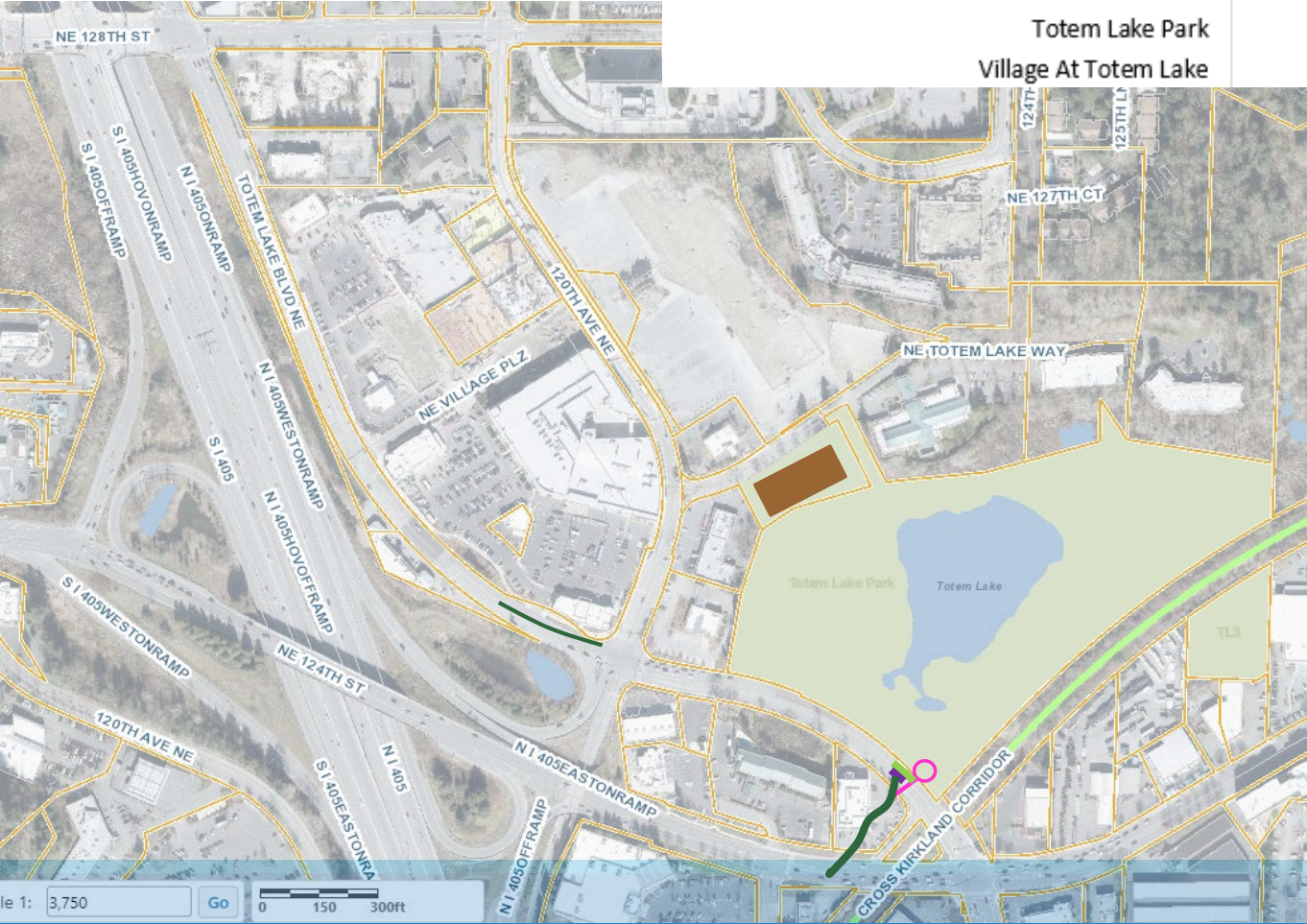


NUD FM: needs SEPA, very fast schedule
need resource evaluation
[more than 1 crew?]

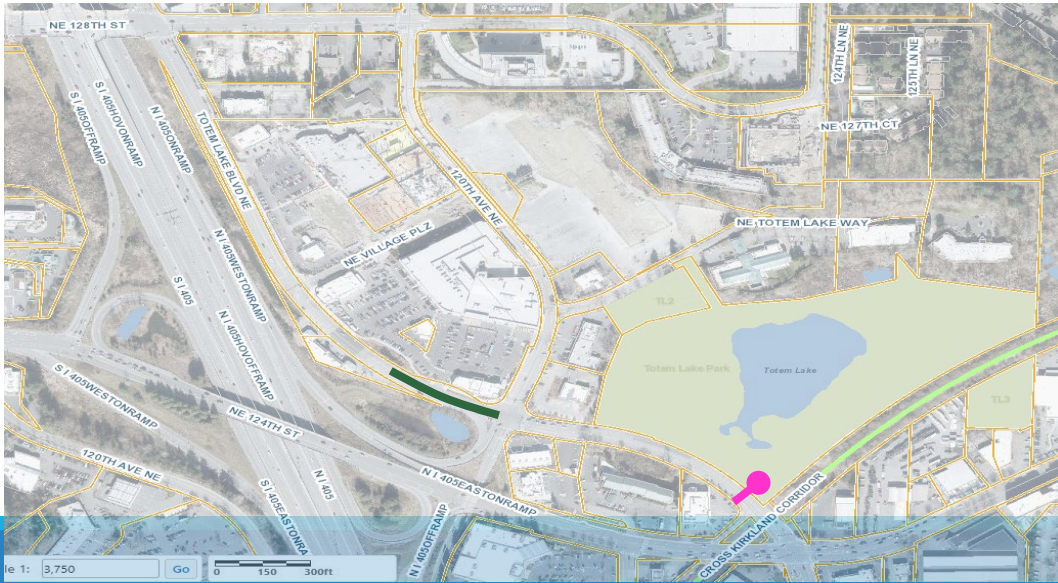


Totem Lake Coordination

- Gateway [Comfort Inn Outfall]
- NUD 8" [JOC]
- Forcemain Phase 1 & 2
- Comfort Inn [complete before Gateway P2 paving]
- Gateway [wall and road rebuild][2 lanes traffic]
- Gateway P1 Paving
- Gateway P2 Paving
- TLC
- Totem Lake Park
- Village At Totem Lake

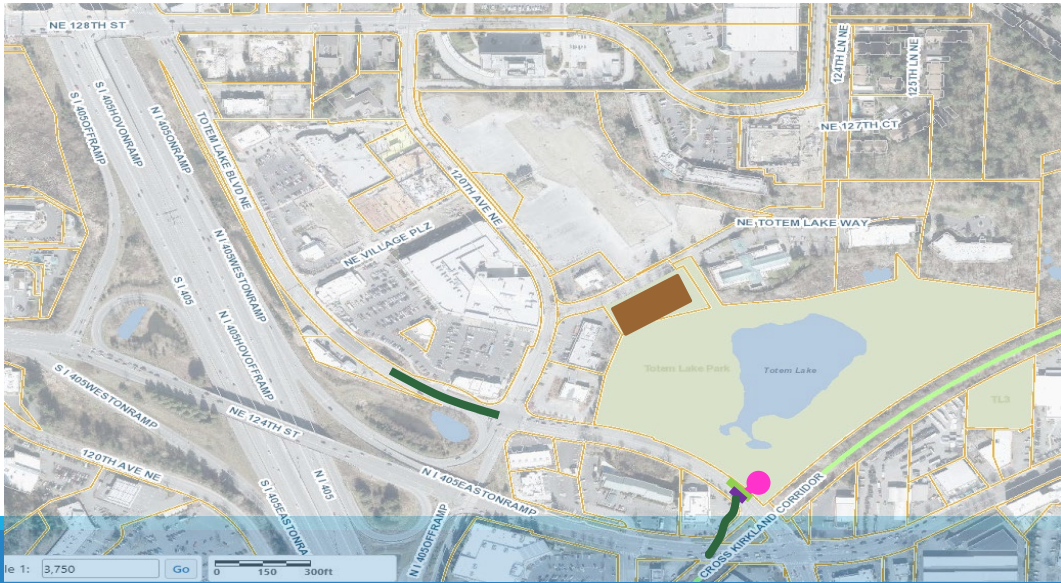
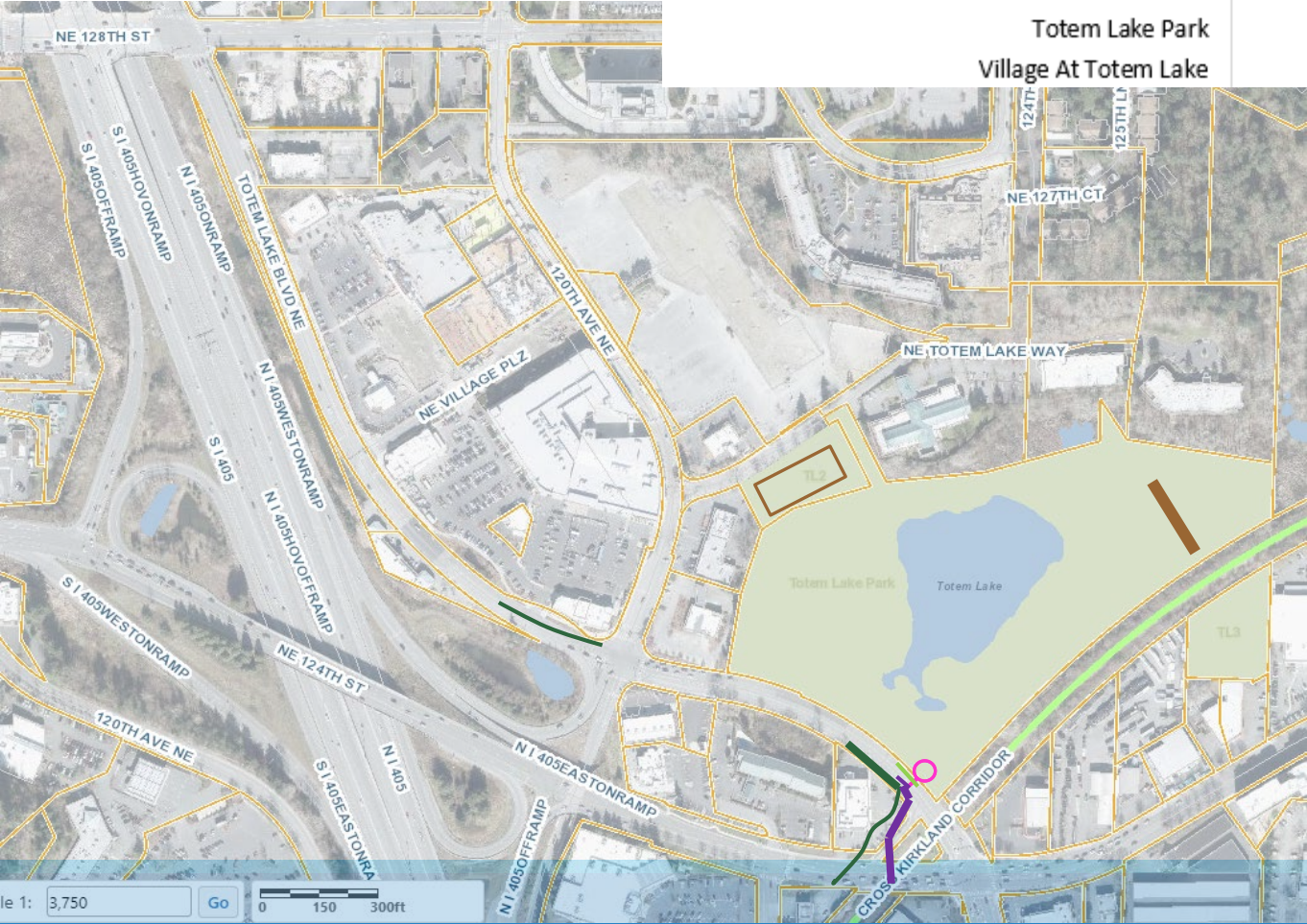
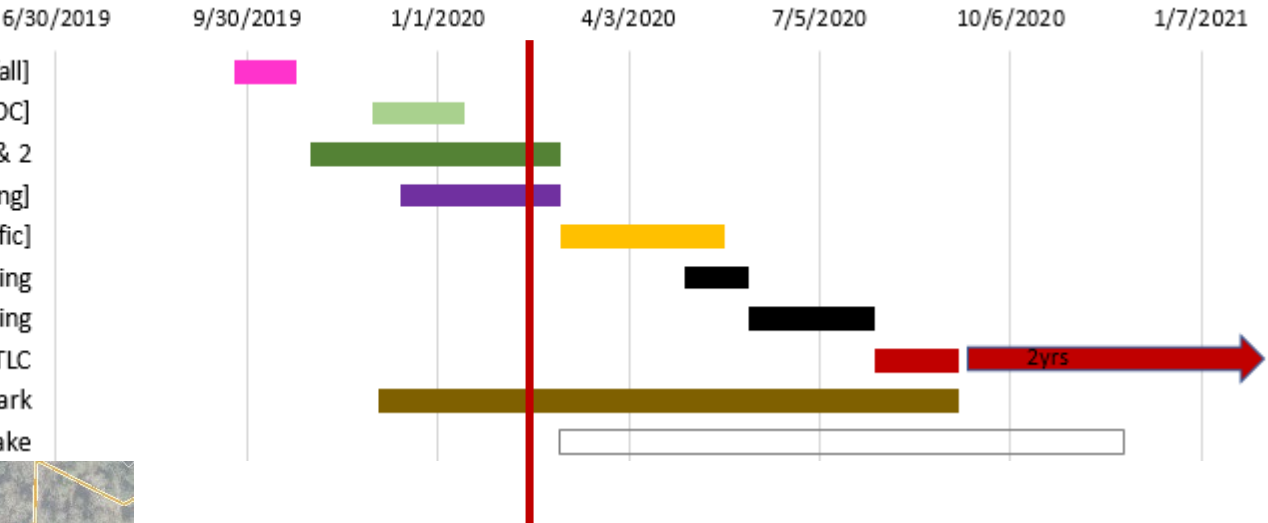


8" sewer for TLC
Comfort Inn
Close right turn lane?
Risk: weather & holidays



Totem Lake Coordination

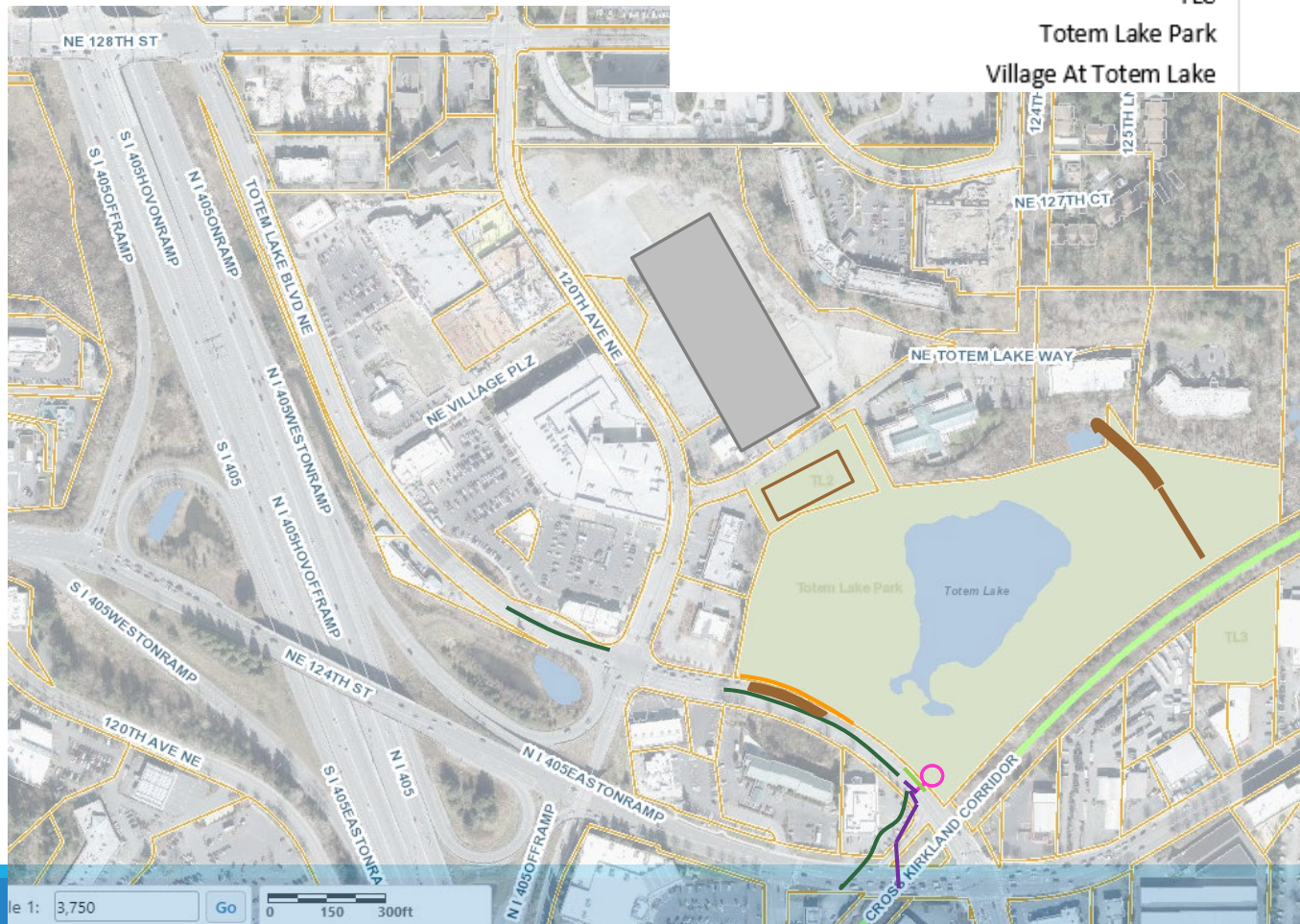
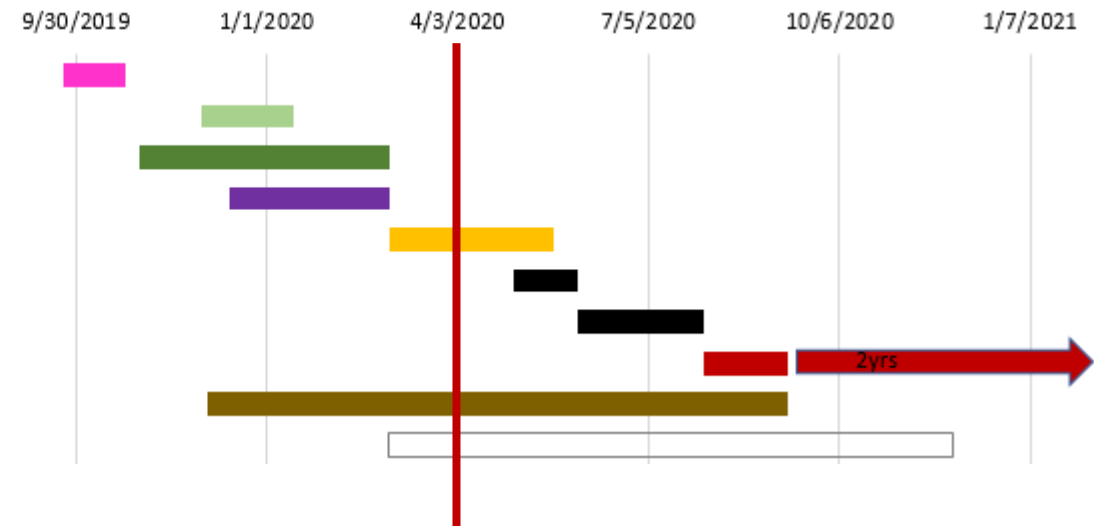
- Gateway [Comfort Inn Outfall]
- NUD 8" [JOC]
- Forcemain Phase 1 & 2
- Comfort Inn [complete before Gateway P2 paving]
- Gateway [wall and road rebuild][2 lanes traffic]
- Gateway P1 Paving
- Gateway P2 Paving
- TLC
- Totem Lake Park
- Village At Totem Lake



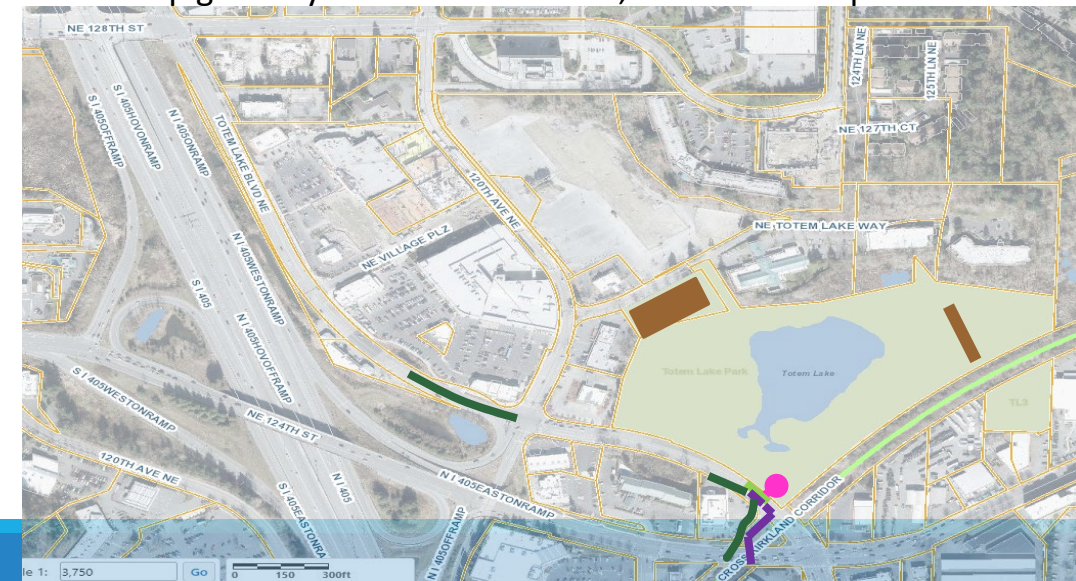
Totem Lake Coordination

6/30/2019

- Gateway [Comfort Inn Outfall]
- NUD 8" [JOC]
- Forcemain Phase 1 & 2
- Comfort Inn [complete before Gateway P2 paving]
- Gateway [wall and road rebuild][2 lanes traffic]
- Gateway P1 Paving
- Gateway P2 Paving
- TLC
- Totem Lake Park
- Village At Totem Lake

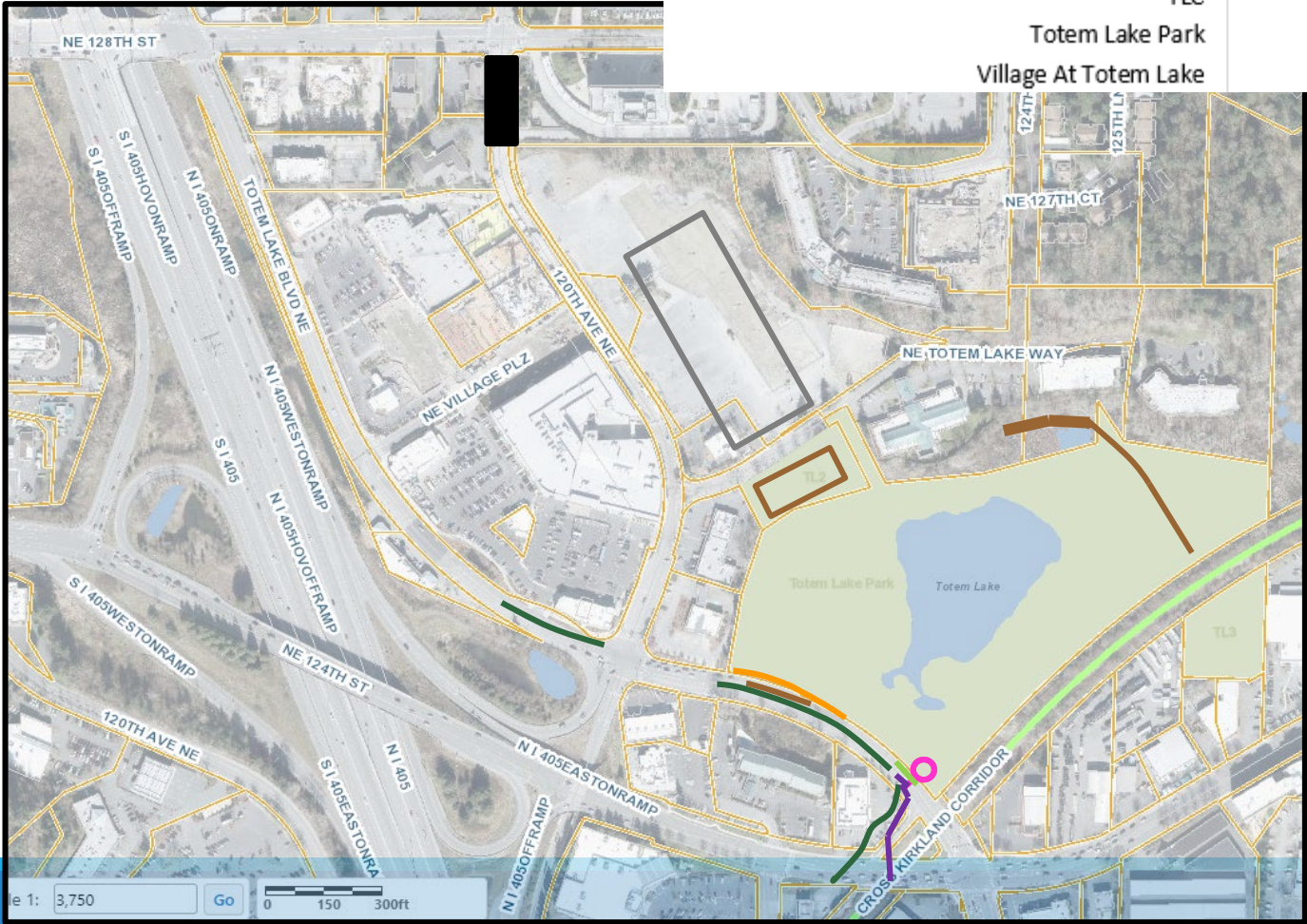
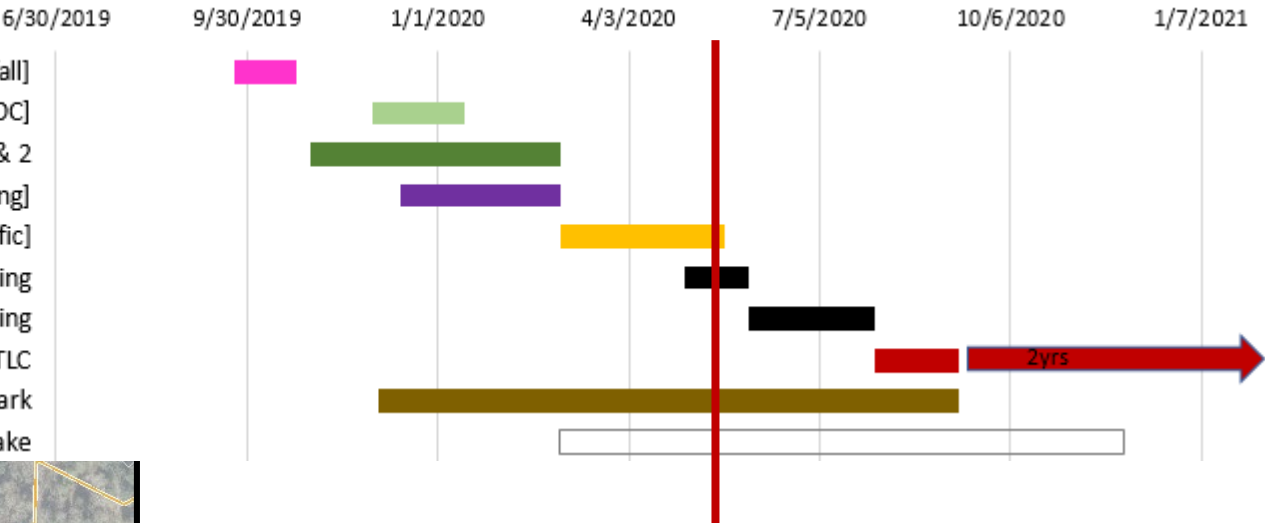


Park Boardwalk: contract provision to begin work along CKC, to minimize risk of TLC crews using CKC for access/staging
 Traffic coordination: 2 lanes on TL BLVD.
 Gateway wall – night take lane; open during day
 Bust stop gateway closed northbound; southbound open

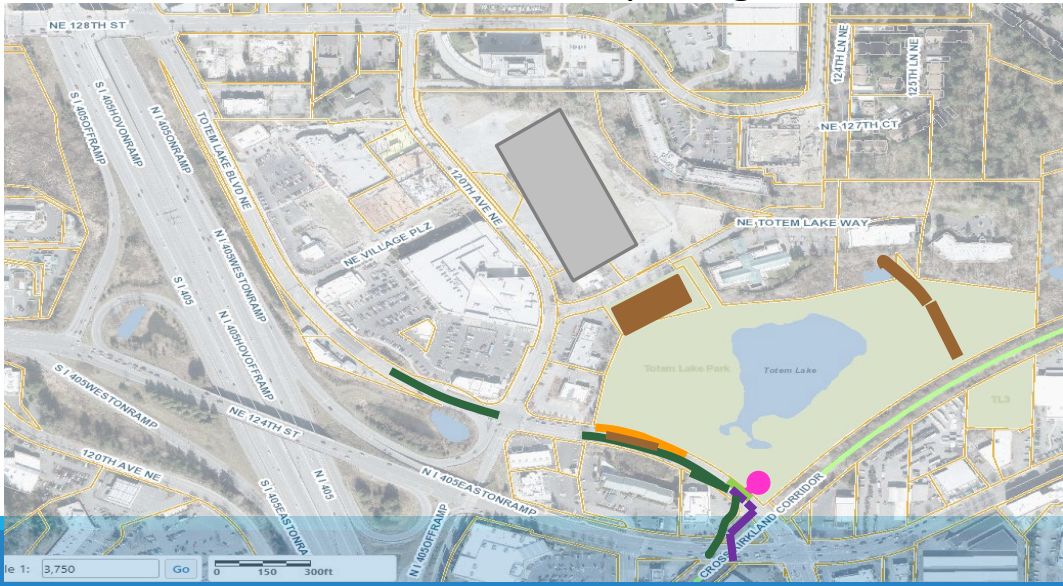


Totem Lake Coordination

- Gateway [Comfort Inn Outfall]
- NUD 8" [JOC]
- Forcemain Phase 1 & 2
- Comfort Inn [complete before Gateway P2 paving]
- Gateway [wall and road rebuild][2 lanes traffic]
- Gateway P1 Paving
- Gateway P2 Paving
- TLC
- Totem Lake Park
- Village At Totem Lake

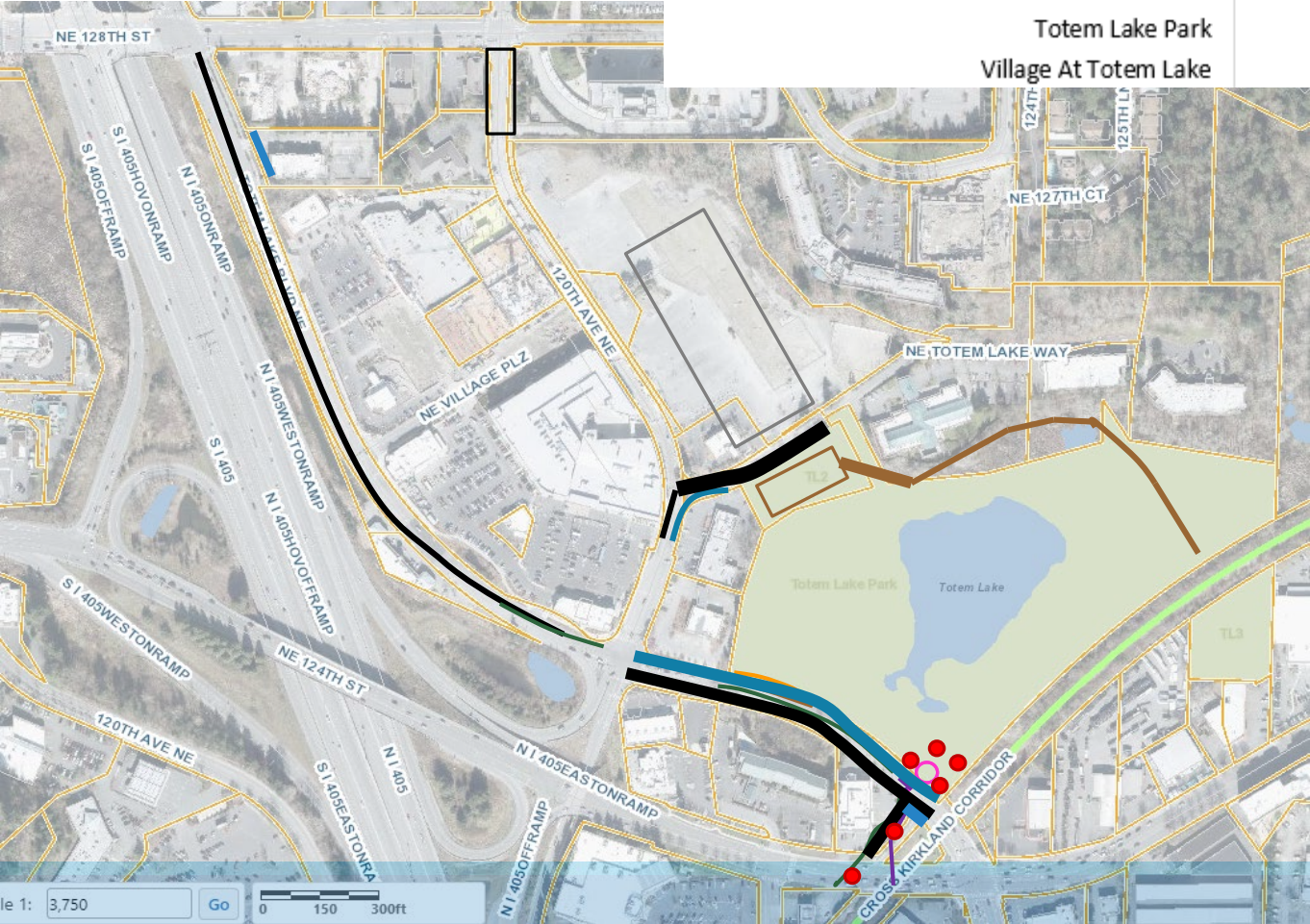
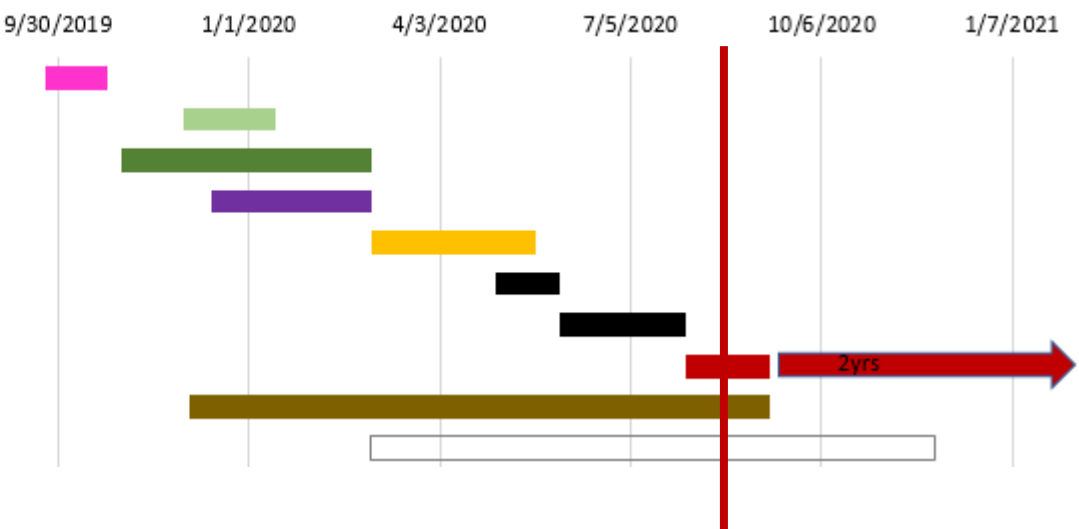


Traffic coordination: 2 lanes on TL BLVD
also paving around mall
Veloce S/W at same time of paving

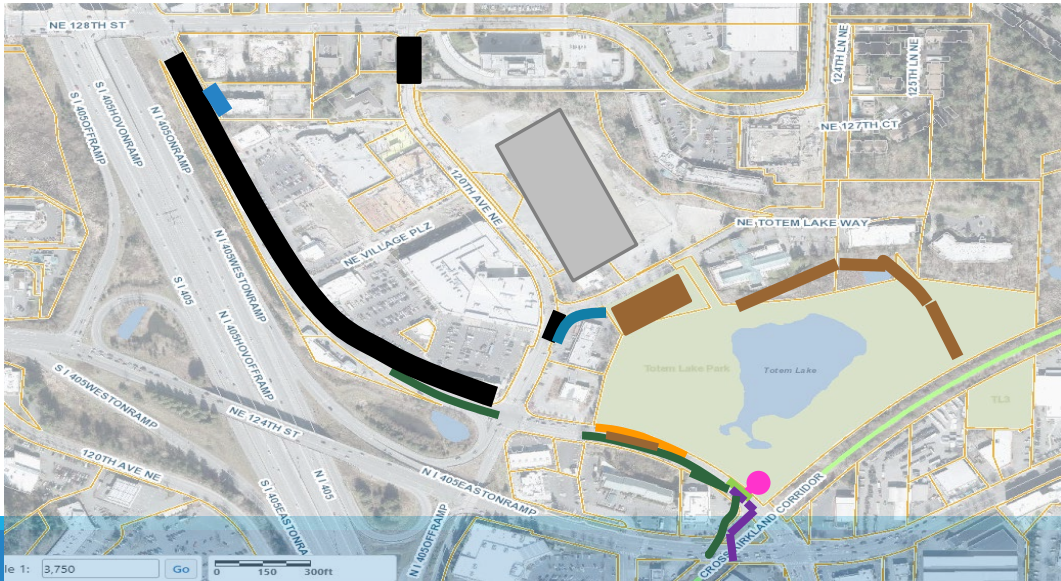


Totem Lake Coordination

- 6/30/2019 Gateway [Comfort Inn Outfall]
- NUD 8" [JOC]
- Forcemain Phase 1 & 2
- Comfort Inn [complete before Gateway P2 paving]
- Gateway [wall and road rebuild][2 lanes traffic]
- Gateway P1 Paving
- Gateway P2 Paving
- TLC
- Totem Lake Park
- Village At Totem Lake



Why build sidewalks before bridge?



Totem Lake Coordination

6/30/2019

9/30/2019

1/1/2020

4/3/2020

7/5/2020

10/6/2020

1/7/2021

Gateway [Comfort Inn Outfall]

NUD 8" [JOC]

Forcemain Phase 1 & 2

Comfort Inn [complete before Gateway P2 paving]

Gateway [wall and road rebuild][2 lanes traffic]

Gateway P1 Paving

Gateway P2 Paving

TLC

Totem Lake Park

Village At Totem Lake

