

# **FIRE STATION 24**

Public Art

City of Kirkland

Michael Clapper Studios

September 16, 2020

# PROJECT UPDATE

- May/June – Demolished Rite Aid
- July/August – Bidding
- August – Bid Opening
- September – Award and Contracting
- October 2020 – Break Ground on Fire Station
- Fall 2021 – Final Completion



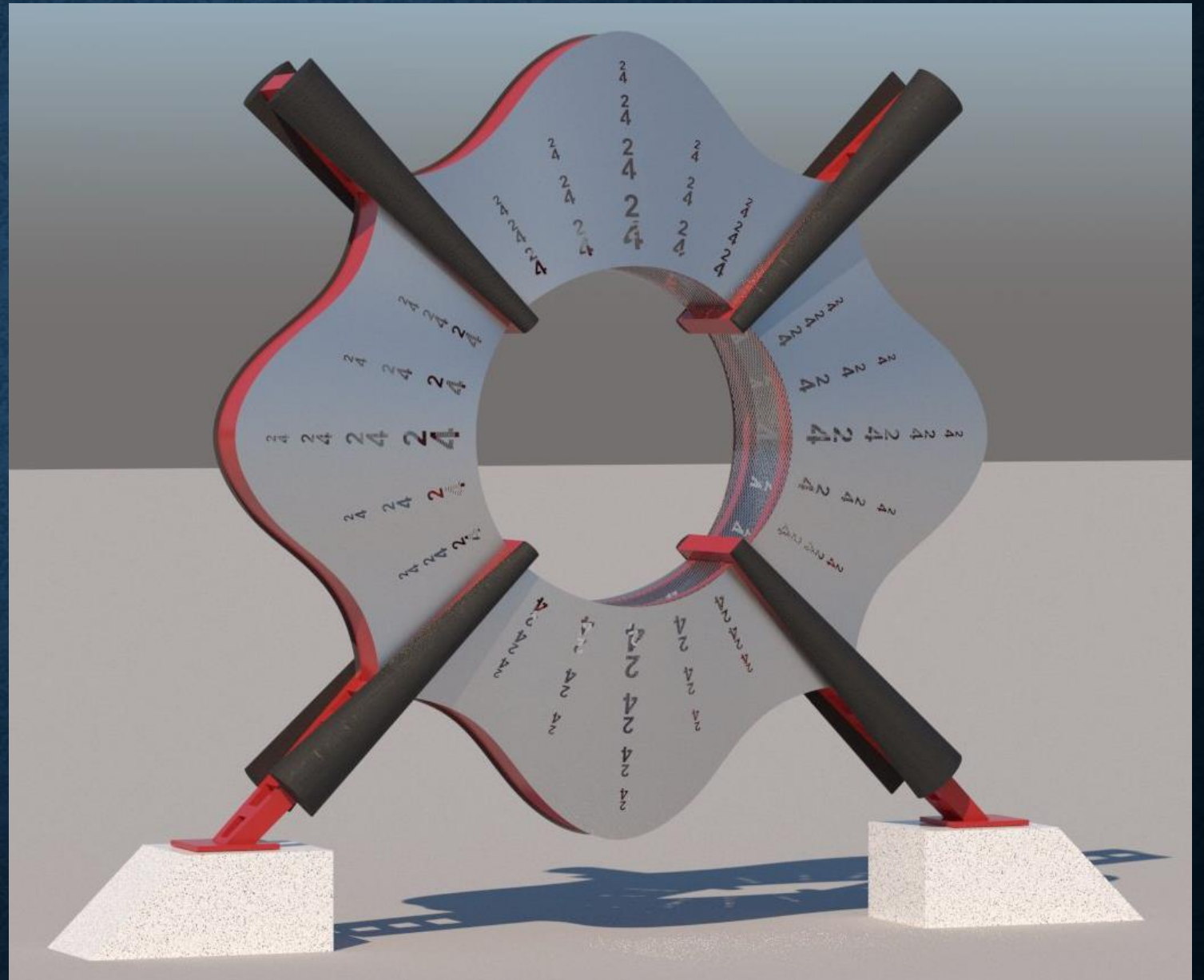


# ART SELECTION PROCESS

- Completed
  - 36 Applicants → 2 Finalists
  - Committee unanimously selected Michael Clapper Studios and his proposal, “The Sentinel.”
  - Updated KCAC in February 2020 – and then finalized outside patterns and the cylindrical inside
- Next Steps
  - KCAC to recommend approval to City Council
  - Approval by City Council
- Michael Clapper worked with Project Team – Placement, Foundation, Electrical and Data Connections
  - 2/2021 – 8/2021: Fabrication of The Sentinel
  - 9/2021: Installation of The Sentinel

# “THE SENTINEL”

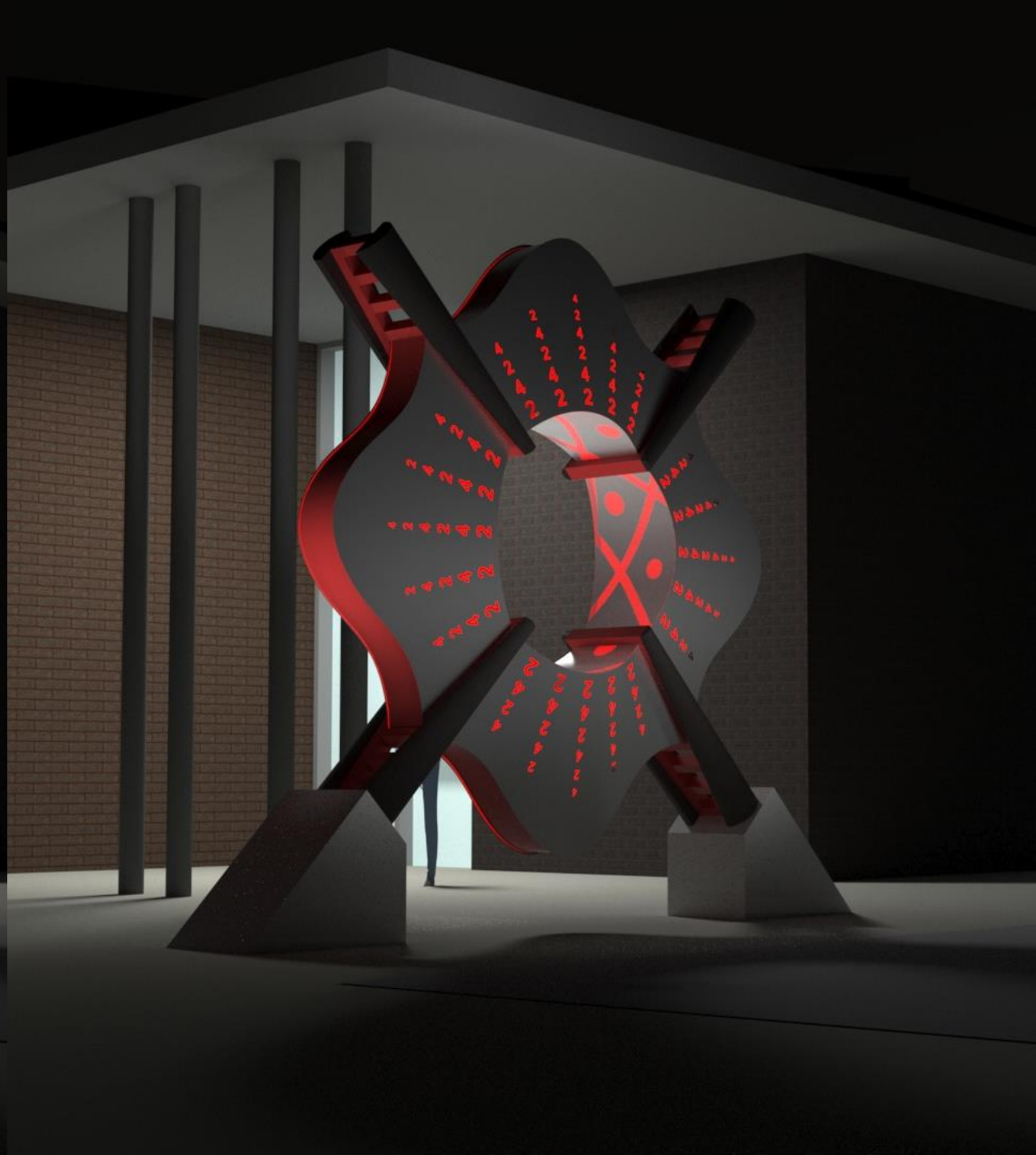
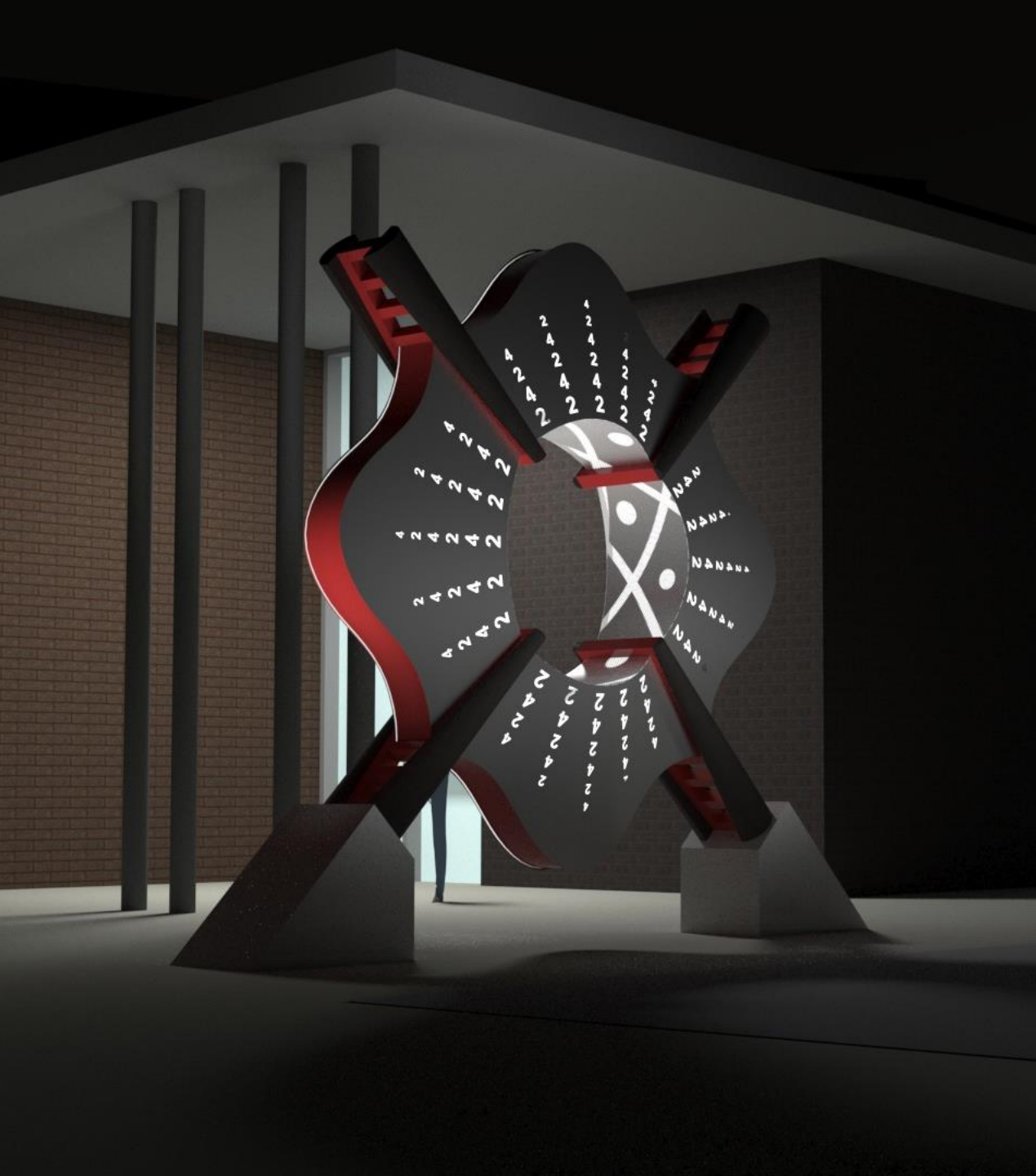
- References the historical, international, and iconic symbol of the Fire Fighter, the Maltese Cross
- Material choices and colors reference heat and fire
- Sculpture references the protection of the community
- Powerful in its Simplicity and Meaningful in its Message
- Lit from within

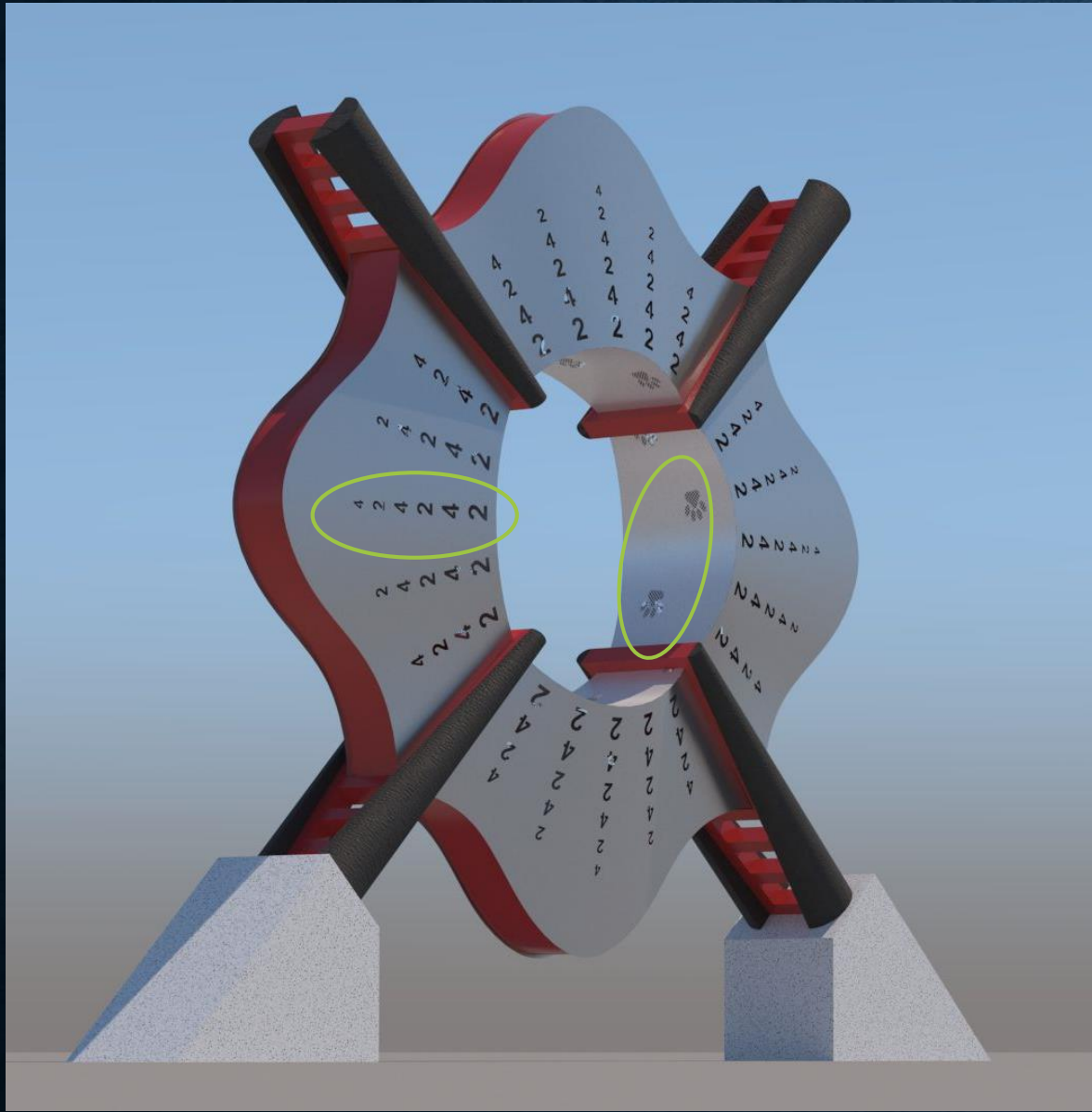




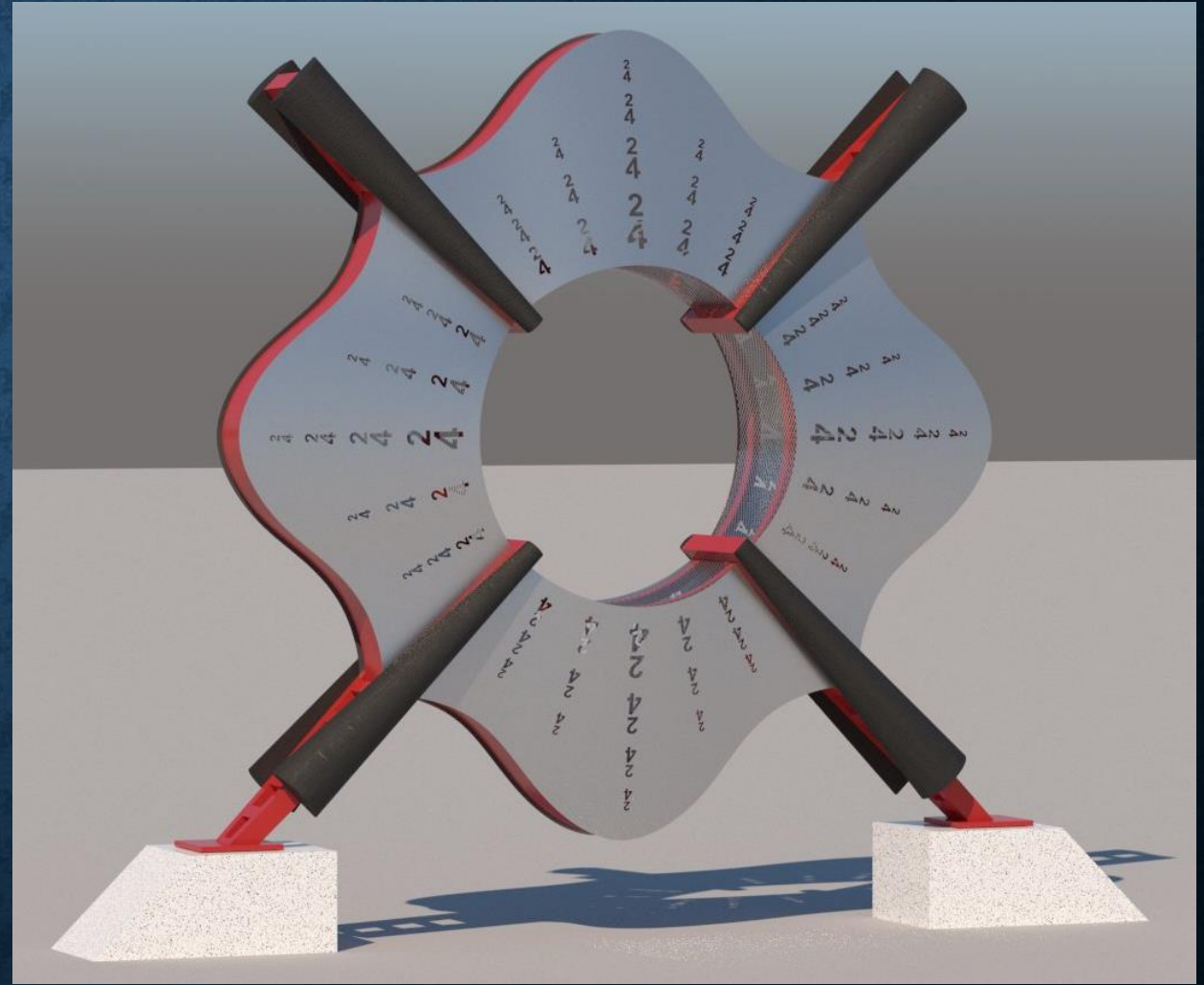






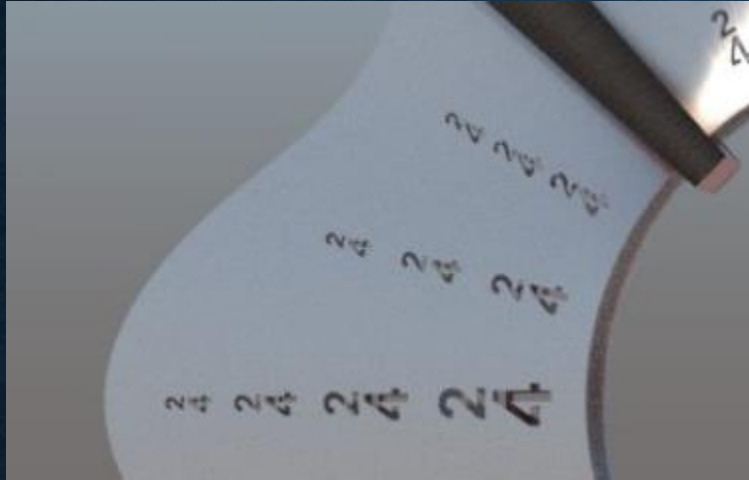


Original Design

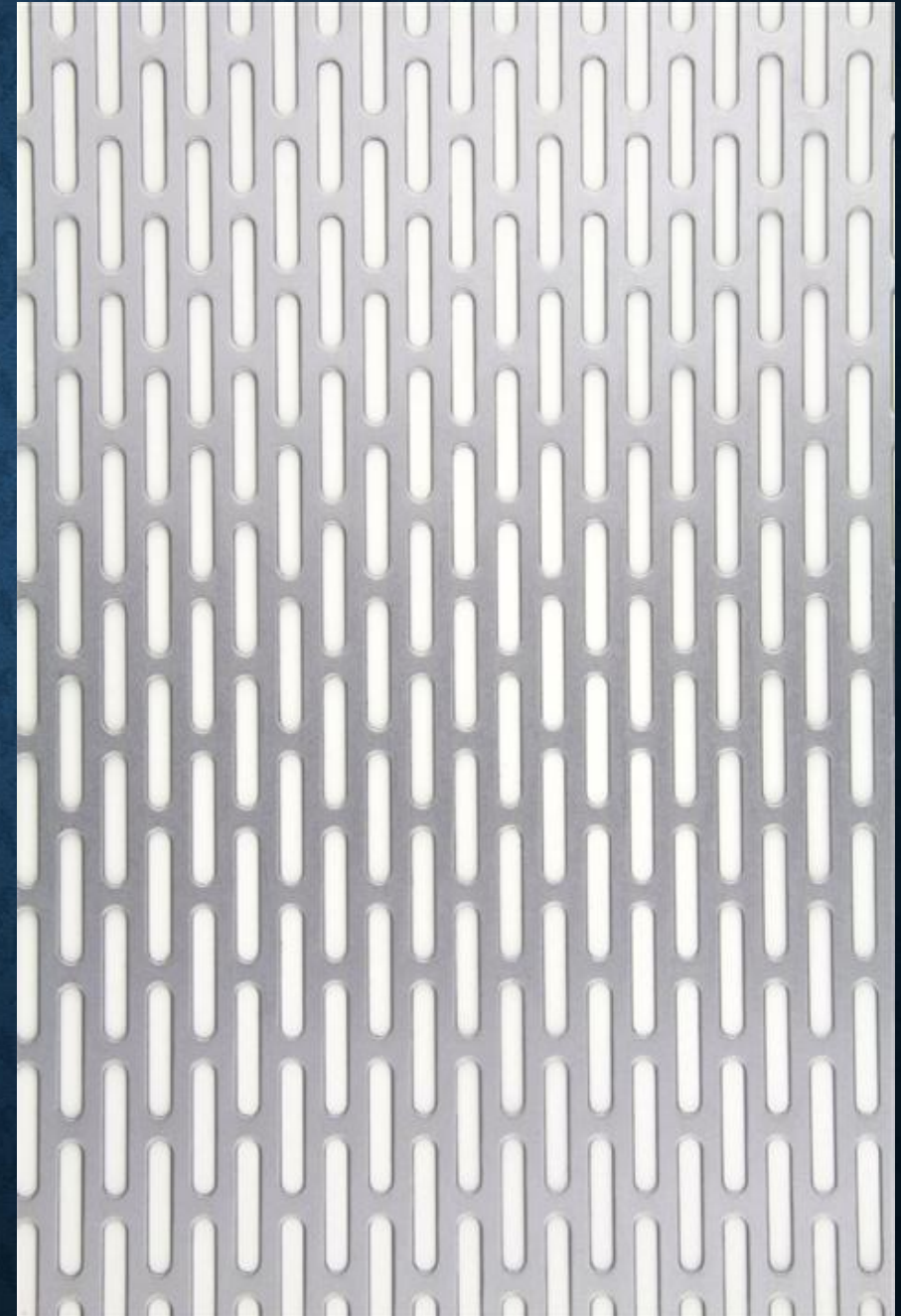


Revised

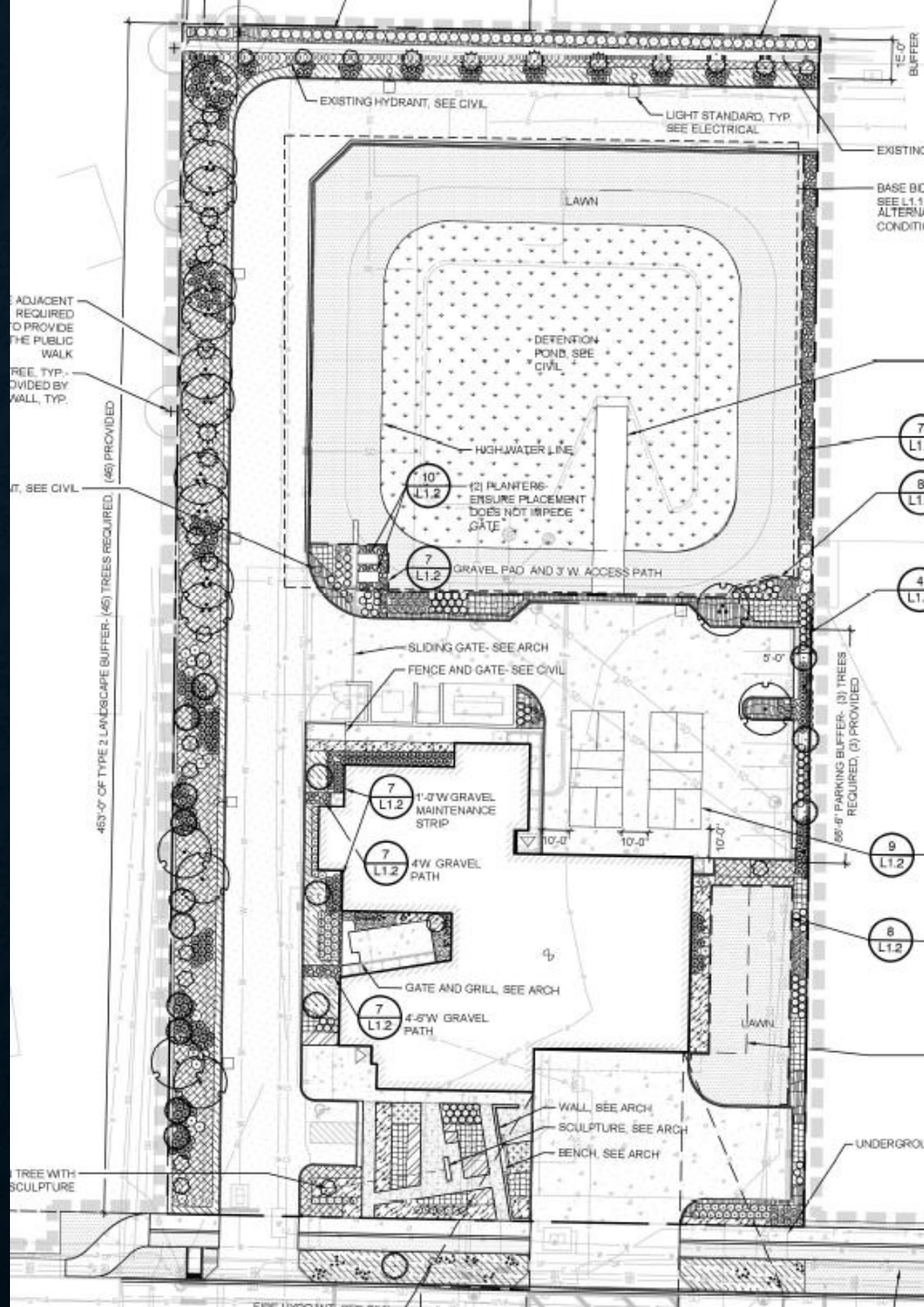




- 24s were revised – 24 can reference both the station number and the 24-hour sentinel
- stainless steel, perforated pattern to line the cylindrical walls of the interior hole in the sculpture. Using this will create an even glow of soft light coming from inside the sculpture and won't take away from the number pattern on the front and back surface.



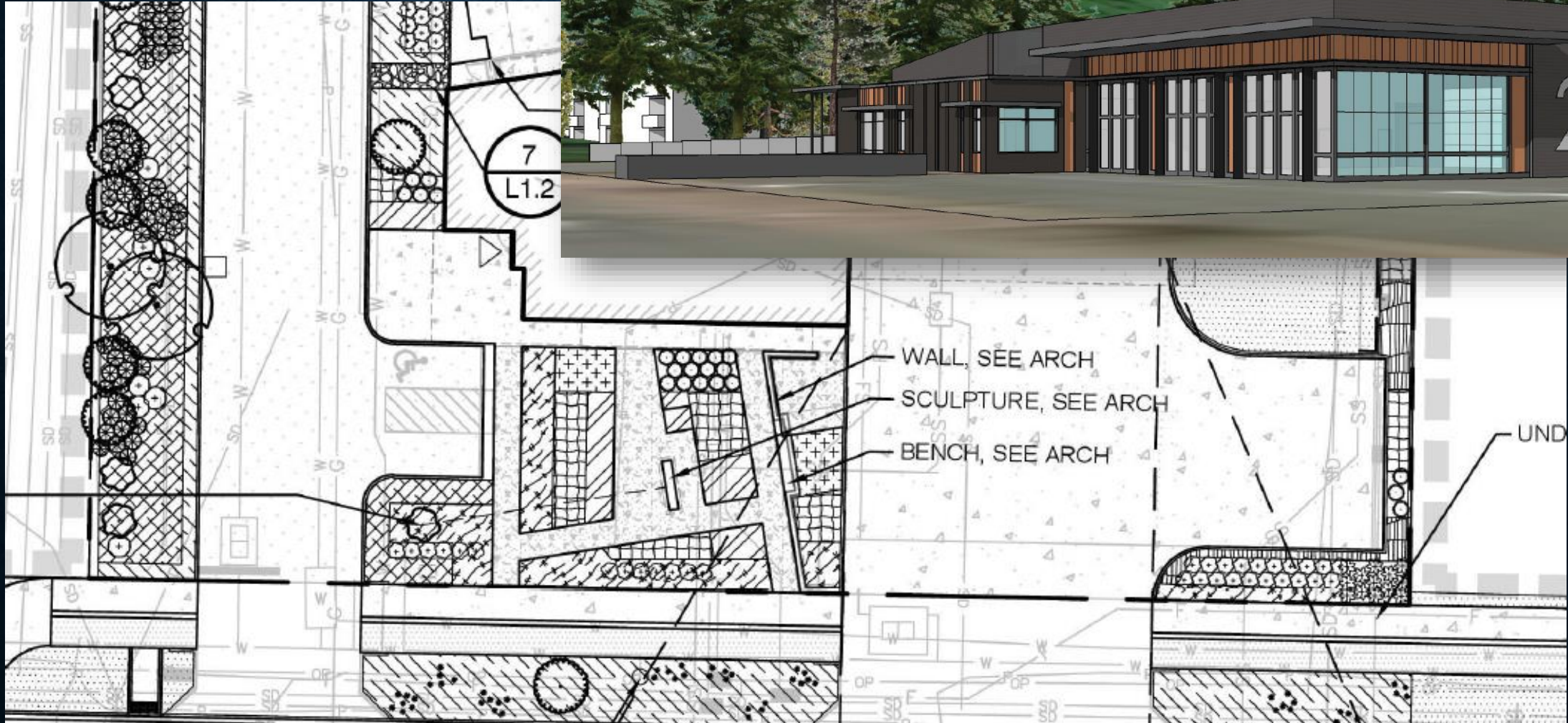




## • Fire Station 24 Site Layout

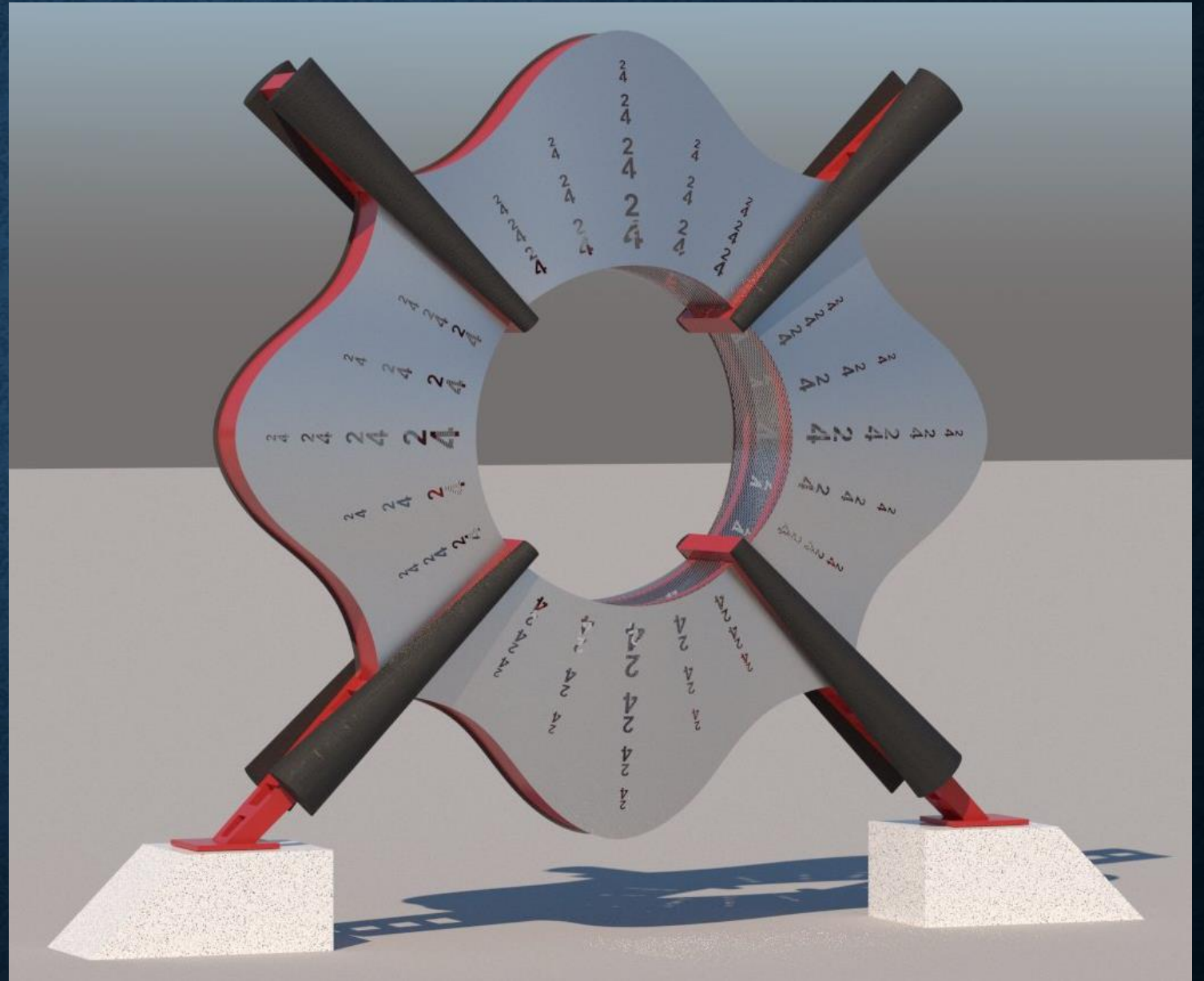
- 9824 NE 132<sup>ND</sup> ST
- Former Rite Aid site, next to Goodwill, across from Juanita Elementary
- Station to be built at the front of the site, with fire fighter parking behind the station.
- Back half of the parcel will contain a stormwater vault, covered with grass.
- Through a settlement agreement, Goodwill customers can continue to drop off using Fire Station parcel.
- Intersection of fire station, school, and path will be signalized.
- Art installation is at the front of the station within the public space between visitor parking and the station apron







# THE SENTINEL



# **JUANITA BEACH BATHHOUSE REPLACEMENT**

Public Art

City of Kirkland

September 16, 2020





# PROJECT UPDATE

- Demolition of Bathroom Building
- October – Final Completion







- Inclusive playground with Accessible Play Surface



- Two picnic pavilions, designed to be rented separately or together.



# ART UPDATE

- Committee selected Three Limbs, by Urban Rock Designs – 2019
- Kirkland Cultural Arts Commission – February 19, 2020
  - Following this meeting, the Art Committee & Parks
    - Revised the Location and Mounting of the Image Discs
    - Added an Image disc to match the four sides of the dock
    - Changed the material of the benches to concrete with wood pattern
- Next Steps
  - Select final fourth image
  - KCAC Recommendation
  - Artist – Finalize Design and Pricing and Schedule
  - City Council

## Art Committee

Dana Nunnelly

Uzma Butte

Dawn Laurant

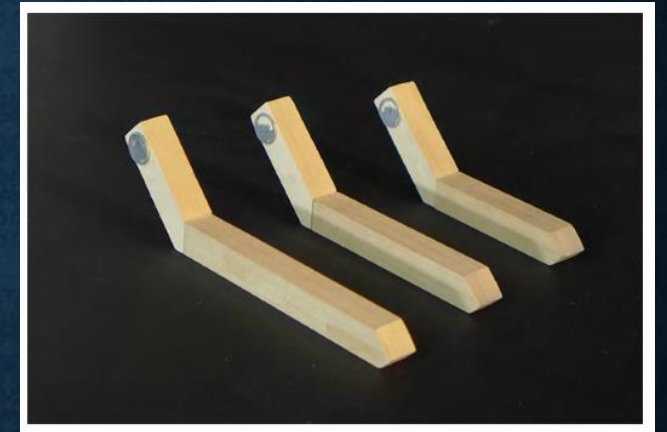
Parks (Mary Gardocki/  
Jason Filan)

Carol Belval (fmr)

Rosalie Wessels (fmr)

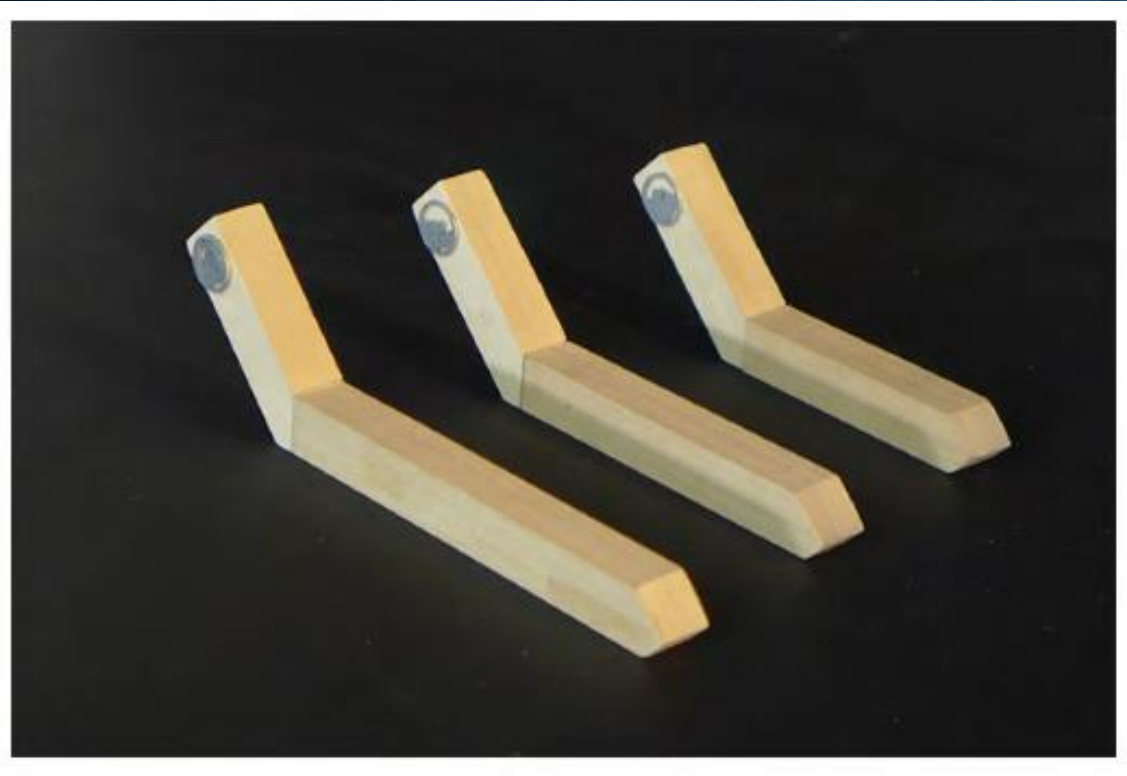
# THREE LIMBS ART SUMMARY

- Three Limbs is a two-part project: seating elements represent the area's timber-rich landscape, and metal image disks translate historic photos of the site's past.
- Three Timber Benches
  - Refers to the sawmill past of the Park
  - Provides a seating play element
  - Each limb holds an image portraying the lumber industry
- Four Image Disks
  - Hold images of the beach's recreational views
  - Installed along the railing of the dock, providing views back to the Park.





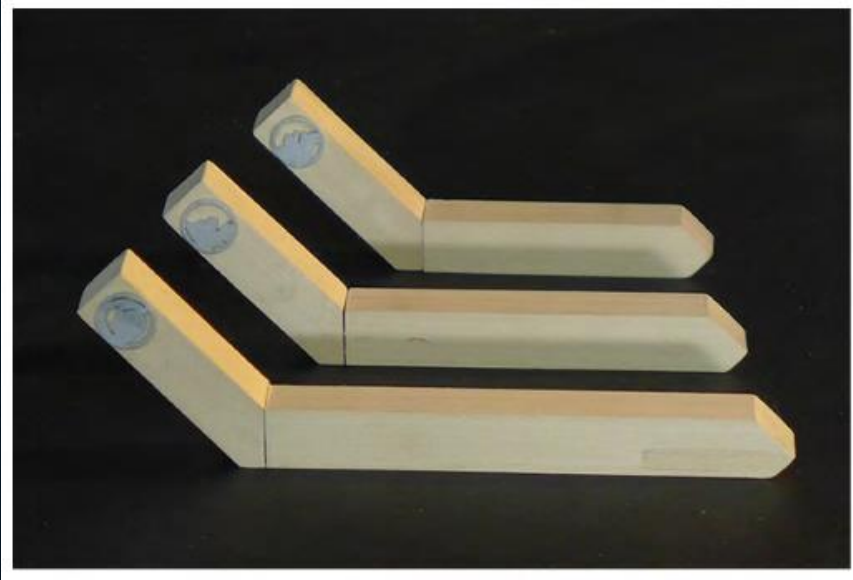
# THREE TIMBER BENCHES



- Three faux-timber benches with an anti-graffiti coating; resistant to etching and tagging
- Benches vary in length: 14', 12' and 10' long. The benches are aligned approximately 5' on center.
- Slightly raised off the ground (+3") on concrete point footings.
- Each bench will feature an embedded stainless-steel cut-out disk featuring historic scenes.



# THREE TIMBER BENCHES



Placement of Image Disks

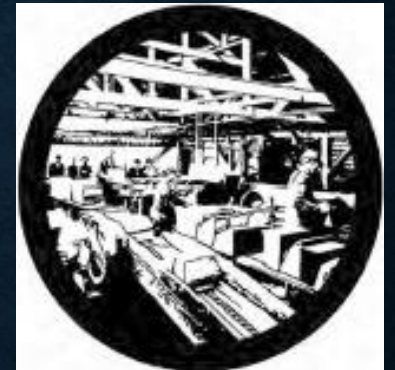
- Each bench has one 12" diameter, 3/8" thick stainless steel disk mounted to its side.
- Two images are lumber/wood related.
- One image is indigenous peoples related.



1855 Point Elliott Treaty  
(Re-enactment)  
1933

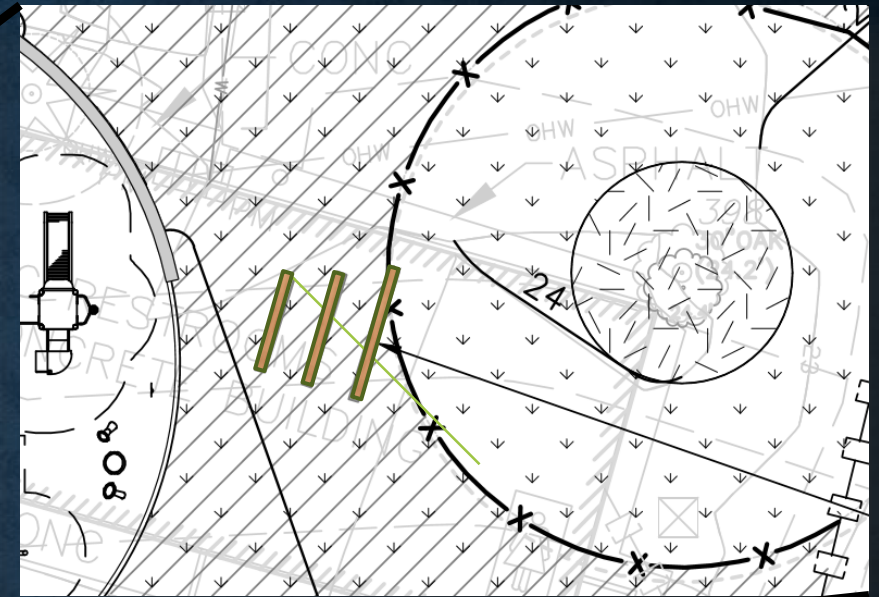
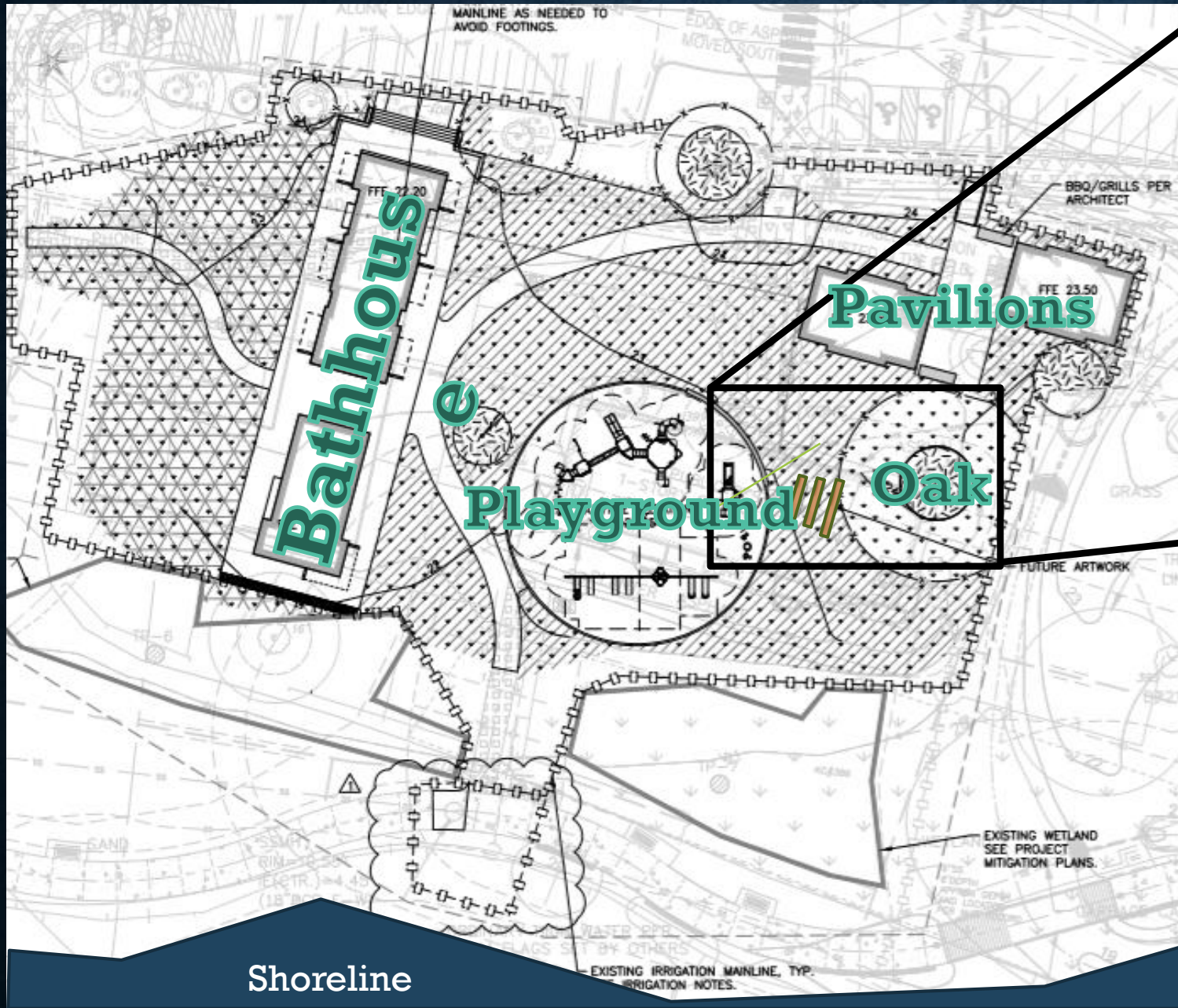


Hauling Shingles on  
Cross Plank Road  
1900



Shingle Sawyers  
1900





### THREE TIMBER BENCHES

- Perpendicular to Shore
- Seated between Playground and Mature Oak

Shoreline

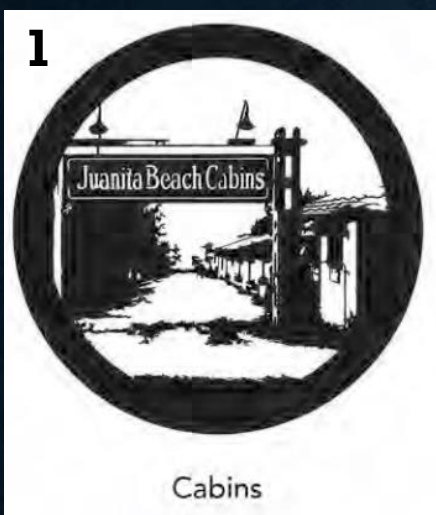


# FOUR IMAGE DISKS

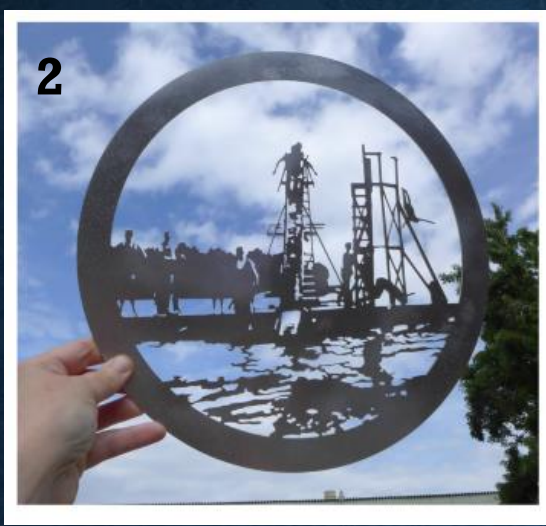


- Stainless-Steel Cut-Out Metal Disks Featuring Historic Scenes of Juanita Beach Park
- Brings historical context to the project through the use of photos, and ties in with existing public art at Juanita Beach (a rock structure which frames the view of water)
- 24" Diameter.
- The disks are fixed on the railing and allow Park visitors to observe the shoreline of the past.





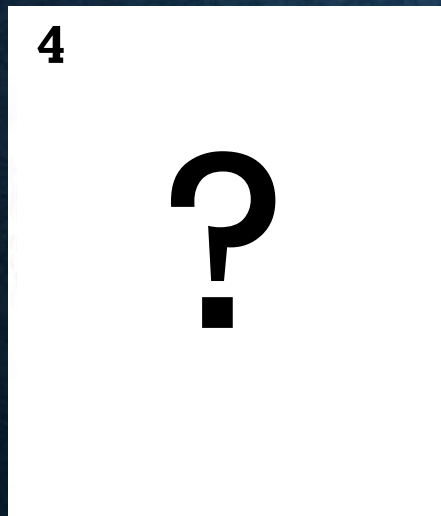
Cabins



Swimming Dock



Bath House  
1935



**FOUR IMAGE DISKS**



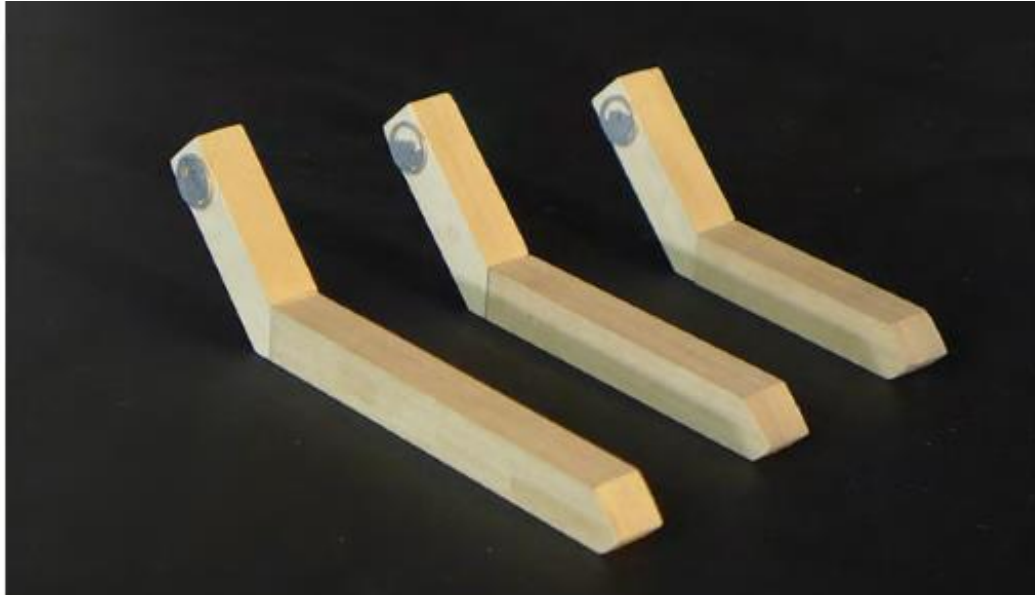
4

?



**FOURTH IMAGE**





# JUANITA BEACH PARK