



Active Transportation Plan Update

Transportation Commission

October 23, 2019

Kimberly Scrivner, Transportation Planner

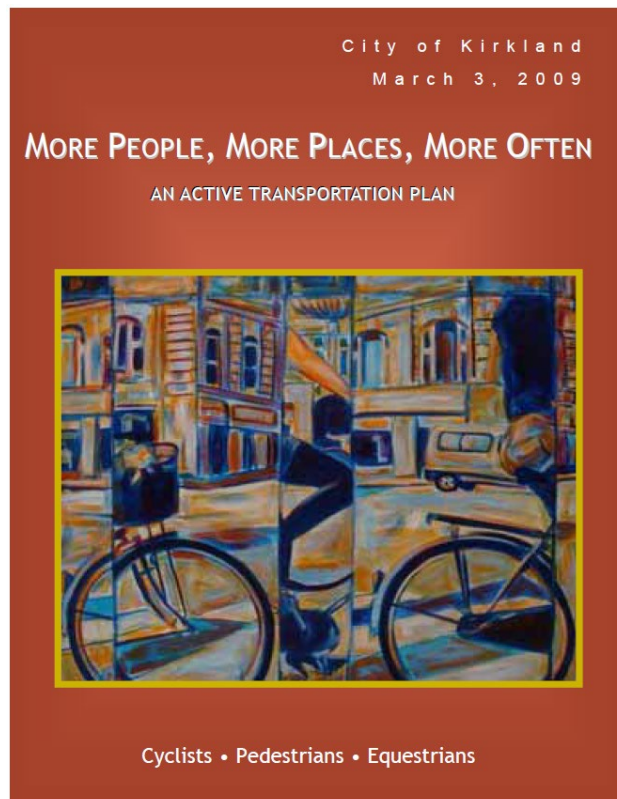
Overview

- Background
- Coordination Activities
- Status and Timeline
- Scope of Work
- Discussion

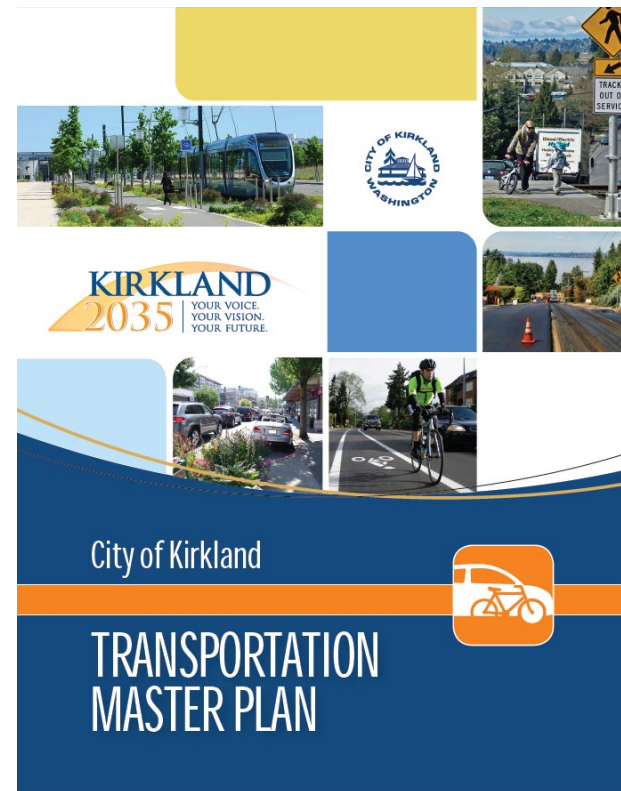


Background

2009 Active Transportation Plan

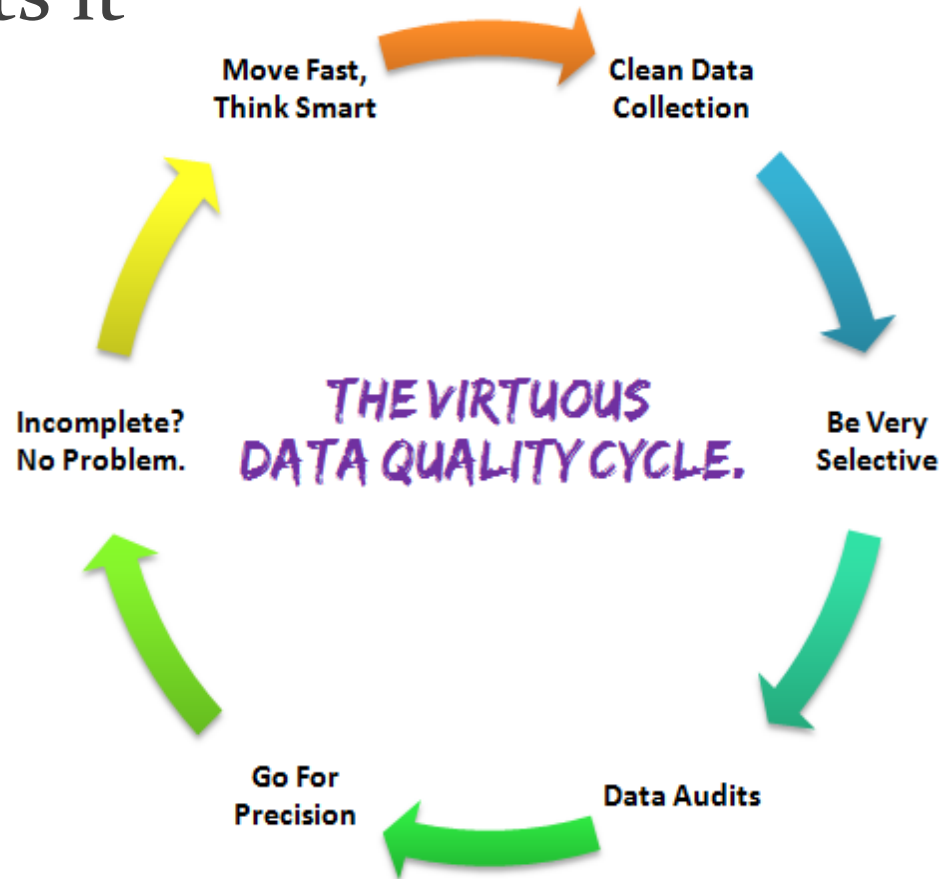


2015 Transportation Master Plan



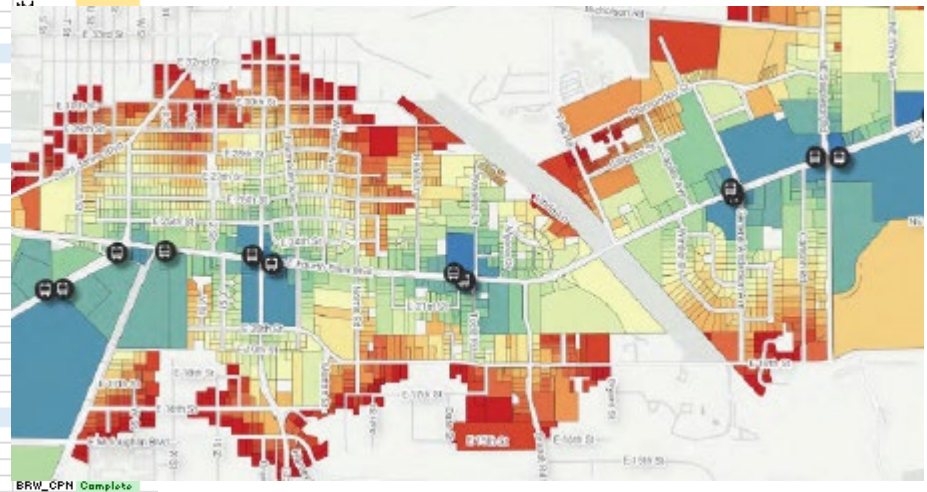
Data Renovation Work

Analysis is only as good as the data that supports it



Data Renovation Work

Data type - Tundra Term	Data type - COK To	File name(s)	File type	4 From	Status	va
A. Existing and planned bicycle facilities						
Existing and planned bicycle facilities	On Street Bike Facilities	NMT_OnStreetBike_F	Feature Class	Blair & Rene	Complete	
Prepared bike lanes	Prepared bike lanes	RecommendedBikeLane	Shapefile	H:\PuTrar	Complete	
Bike counts	Bike counts	"Bike Counts" folder	XSLX, PDF	Email from	Complete	Da
Bike/ped counts at signalized intersections (2017)	Bike/ped counts	CountData_Tabulation	XSLX	Vna2220cc	Complete	
Prepared neighborhood greenways	Greenways	2018_RecommendedGr	Shapefile	H:\PuTrar	Complete	
B. Pedestrian data						
B1. Existing						
Curb ramps	Sidewalk ramps	NMT_Sidewalk_Ramp	Feature Class	Blair & Rene	Complete	
2015 sidewalk and ramp conditions from ADA transition plan	Ramp conditions	ADA_Ramp_2015;NMT	Feature Class (6)	SDE	Complete	
Marked crosswalk locations	Crosswalks	NMT_Crosswalk_Inven	Feature Class	Blair & Rene	Complete	
Median	Median	ST_Median	Feature Class	SDE	Complete	
Crossing island	Pedestrian Refuges	NMT_Crosswalk_Inven	Feature Class	Blair & Rene	Complete	
Pedestrian crossing signs	Signs	ST_Signs	Feature Class	SDE	Complete	
School walk routes	School Walk Routes	NMT_SchoolWalkRoute	Feature Class	SDE	Complete	
Sidewalk completeness	Sidewalks	NMT_Sidewalk_Inven	Feature Class	Blair & Rene	Complete	
Pedestrian activated crossing	Crosswalks	NMT_Crosswalk_Inven	Feature Class	Blair & Rene	Complete	
Uncontrolled crossing	Crosswalks	NMT_Crosswalk_Inven	Feature Class	Blair & Rene	Complete	
10-minute walkability score (sidewalk layer)	Does not exist	Does not exist	Does not exist	Does not exist	Complete	
10-minute walkability score (raster layer)	Walkability	Walkability	Raster	MNTWork	Complete	
Shared use paths and trails	Trails	NMT_Trail_Inven	Feature Class	SDE	Complete	
Existing connections	Trails	NMT_Trail_Inven	Feature Class	SDE	Complete	
OKC connections (private unimproved, improved, and unimproved)	OKC Connections	ConnectionsAssessment	XLSX	H:\PuTrar	Complete	
Lighting	Lighting	ST_Lighting	Feature Class	Blair & Rene	Complete	
Cross Kirkland Corridor	OKC	TRN_CrossKirklandCorr	Feature Class	SDE	Complete	
Dauntun pedestrian counts	Ped counts	CountData_Dauntun	XLSX	Vna2220cc	Complete	
B2. Planned/Proposed						
Unfunded bicycle and pedestrian CIP projects	CIP Point, Line, and Poly	CIP_Pt, CIP_Line, CIP_P	Feature Class	SDE	Complete	
Potential crosswalk treatment candidates	Crosswalk improvement	DauntunKirklandPed	PDF, DOCX	Irir	Complete	
Prepared neighborhood connections	tbid	tbid	tbid	tbid		
Bicycle and pedestrian project suggestions from the community (shapefile)	tbid	tbid	tbid	tbid		
Bicycle and pedestrian recommendations from the neighborhood plans	tbid	tbid	tbid	tbid		
C. Transit data						
Transit boarding and alighting data	tbid	tbid	tbid			
Metra transit routes starting March 2020	Transit Routes	"Transit Routes" folder	Feature class	tbid		
Prepared transit stops	tbid	tbid	tbid			
Existing bus stops	Transit Stops	transitstop_point	Feature class			
D. Roadway data						
Street centerlines (with functional classification and posted speed limit)	Streets	TRN_Street	Feature Class			
Traffic signal and other traffic control device locations	Traffic Signals	ST_TrafficSignal	Feature Class			
ITS completed and planned locations (if it includes planned signals, it uses ITS)	Possible future signals	Draft COKITS Plan July	PDF			
Vehicle speed (posted or 85th percentile)	Speed Limits	TRN_Street	Feature Class			
Traffic Study data from Neighborhood Traffic Control Program	85th % speed, Vehicle type	Neighborhood Traffic Co	NLS			
Vehicle volume	Traffic Volume	2017 Average Daily Traff	PDF			
Traffic counts	Traffic Counts	TrafficCountTable.csv	CSV			
Number of vehicle lanes on roadway width	Roads	Roads	Feature Class			
On-street parking	Regulated Street Parking	TRN_RegulatedStreetP	Feature Class			
Right-of-way	Right-of-way	RP_rou	Feature Class			
Curb line	Curb Line	CurbLine	Feature Class			
Freight routes	Freight Routes	FreightRoutes	Feature Class			
Intersection (point, if available)	Intersections	TRN_Intersections	Feature Class			
PCI conditions (not critical, but could be used for prioritization)	PCI	All Streets PCI - July '18	PDF			
E. Land use-related parcel or point data						
Land use	PL_Zoning	PL_Zoning	Feature Class			
Employment locations (with number of employees) (could be generated)	RP_BurAddressrpt	RP_BurAddressrpt	Feature Class			
Care services (dentist office, hospital, doctor office, pharmacist, etc.)	RP_BurAddressrpt	RP_BurAddressrpt	Feature Class			
Community center	Community Center	Community Center	Feature Class			



Coordination

Safe and Active Transportation

- Vision Zero Action Plan
- Safer Routes to School Action Plans
- Active Transportation Plan

Coordination Includes outreach, analysis, data renovation, recommendations

Additional coordination with the Sustainability Plan and Neighborhood Plans

• Scope of Work

- Outreach
- Technical Analysis and Recommendations
 - bike network
 - pedestrian access to transit and schools
 - cost-benefit analysis for recommendations
- Design Guidance
- Policy Support
- Potential updates to the Greenways Guide
- Implementation Plan

Schedule

Tasks		2019												2020											
		M	A	M	J	J	A	S	O	N	D	J	F	M	A	M	J	J	A	S	O	N	D		
ATP	Data prep																								
	Scoping	●																							
	Community Engagement											●													
	Technical Analysis														●										
	Plan Development																	●							
	Community and Council Engagement																								
	Final Drafts																	◊							
	Council Adoption																			◊					

- Transportation Commission
- ◇ City Council

Considerations

- Equity
- People with various abilities
- Transit network and future changes
- Land use and development
- Micro-mobility
- Placemaking
- SAFETY

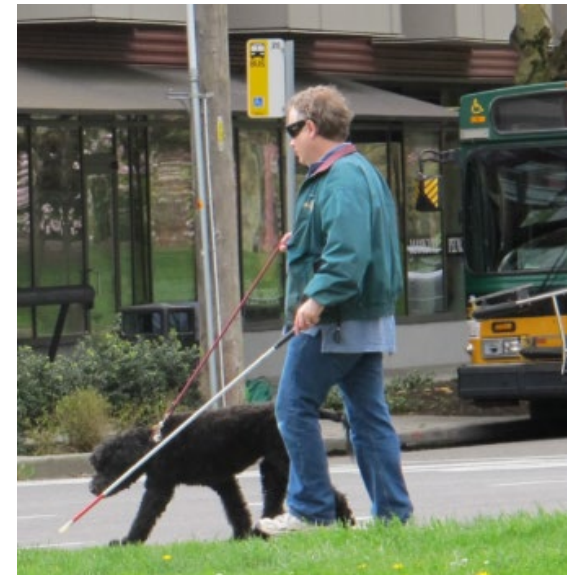
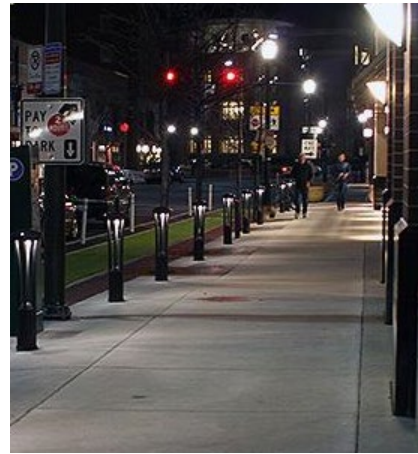
Public Engagement

- Coordination with the Safer Routes to School Program outreach
- Coordinated Survey
- Direct Engagement through events and community / neighborhood meetings

Bicycling



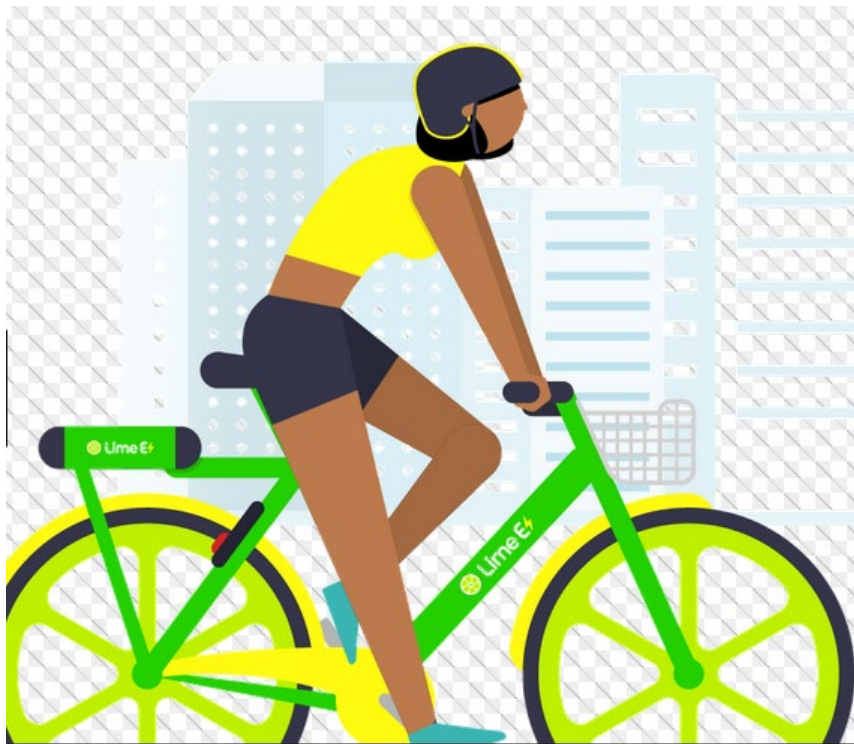
Walking



Discussion



Thank you!



Kimberly Scrivner, Transportation Planner
kscrivner@kirklandwa.gov