



City of Kirkland  
123 Fifth Avenue  
Kirkland, WA 98033-6189

PRSRT STD  
U.S. Postage  
PAID  
Kirkland, WA  
Permit #268

**M**ore than **20,000** dogs of all shapes and sizes live and play in Kirkland. We need you and your dog's help in keeping the trails, parks, and beaches our dogs love clean, safe, and healthy.



## Be **#1** at picking up **#2!!**

Sign the **Super Scooper pledge** and receive a **free poop scooping toolkit** that includes a poop bag dispenser, flashlight, and/or collar light for your pet. Sign the pledge at [www.kirklandwa.gov/petwaste](http://www.kirklandwa.gov/petwaste).

This program is funded by the  
**King Conservation District**



### Questions/Comments:

#### **Kellie Stickney**

Communications Program Manager  
425-587-3021 · [kstickney@kirklandwa.gov](mailto:kstickney@kirklandwa.gov)

#### **Aaron Hussmann**

Education & Outreach Specialist  
425-587-3857 · [ahussmann@kirklandwa.gov](mailto:ahussmann@kirklandwa.gov)







**Join us in welcoming Kirkland's first ever Park Ranger, Betty Fletcher.** Betty came to Kirkland with a wealth of experience in animal control and a background in law enforcement. As a Park Ranger Betty is focused on the safety of our City parks and marina. She also supports Animal Control Officer Jennifer Matison when she needs backup on animal control calls.



### Some of the duties of a Kirkland Park Ranger include:

- patrolling all City parks and the marina
- responding to animal violations
- enforcing leash laws
- ticketing pet owners that fail to clean up their pet's waste
- enforcing the City's pet licensing requirements

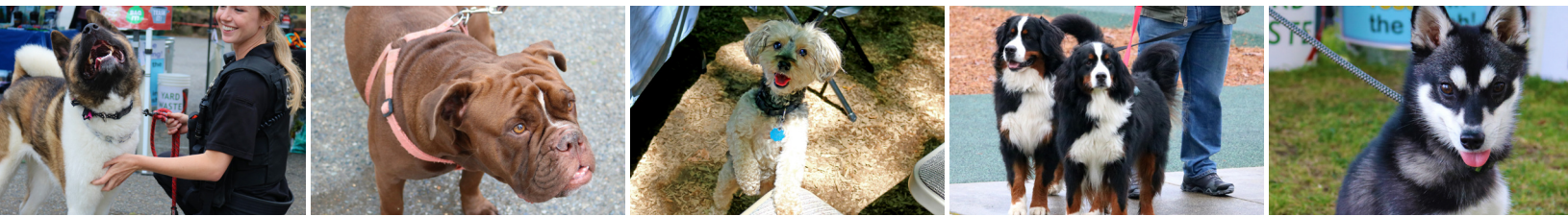
**However, for Park Ranger Betty Fletcher the job is more than just enforcement, it's also about education and building relationships with the community.**



### Is Your Pet License Up-To-Date?

Renew today at <http://bit.ly/KirklandPetLicense!>  
Pet licenses help ensure the safe return of your furry four-legged family members should they ever get lost!

**LOVE 'EM, LICENSE 'EM.**



## The Poop Problem



**Kirkland dogs poop an average of 6,000 pounds every day!** Dog poop contains harmful bacteria and germs that can spread disease to other dogs and wildlife, and pollutes our streams, creeks, and lakes.

Dog poop harbors organisms like E. coli, giardia, parvovirus, worms, and other harmful pathogens that can spread to pets, children, and adults if not cleaned up.

When it rains, dog poop washes away to the nearest storm drain, stream, creek, or lake. The bacteria in dog poop can harm water quality and can make our favorite places to swim and play unsafe.

**Bring extra bags.**  
**Scoop every poop.**  
**Carry it to the trash can.**



## The Poop Solution



**The easiest and most effective way to prevent the spread of disease and water pollution is to scoop the poop, bag it, and put it in the trash.**

**At home,** dog poop should be scooped every day, but weekly scooping and scooping before it rains can also make a big difference. Some bacteria can survive in your yard for weeks or months, and can be tracked indoors by paws, shoes, or flies.

**On walks,** bring extra bags, scoop every time, and carry it to the trash. Watch your dog closely when off-leash and be sure to scoop poop even when it is in tall brush or plants.

**Dog poop, even in biodegradable bags, should not be thrown in compost or yard waste because the bacteria cannot be safely broken down by composting.**