

Marshbank Construction upgrades water and sewer mains and repaves 108th Avenue Northeast

December
2020

PROJECT UPDATE



CARING FOR YOUR INFRASTRUCTURE TO KEEP KIRKLAND HEALTHY, SAFE AND VIBRANT

Sidewalk, pavement repairs resume in spring

Kirkland's contractor is suspending work due to the wet, cold weather of fall and winter

WHAT: Marshbank Construction will return as early as April to complete Kirkland's upgrade of water and sewer systems along 108th Avenue Northeast.

Marshbank Construction will repair damaged curbs and sidewalk and rebuild sidewalk curb ramps to improve the corridor's overall accessibility for all users.

When the weather is warmer and drier, Marshbank will also pave 108th Avenue Northeast, between Northeast 53rd and 60th streets.

Specifically, the contractor will be paving the center turn-lane and the northbound lane. Between Northeast 60th and 68th streets, the contractor will pave the entire roadway.

The contractor will also have to repair sewer connections at Northeast 53rd and 55th streets.

Earlier this year, Marshbank Construction replaced 108th Avenue Northeast's water and sewer systems—both more than five decades old—to increase their capacities to serve Kirkland's growing population and to reduce the systems' needs for maintenance.

That need was most urgent in

the sewer line, which runs from Northeast 68th Street to Northeast 53rd Street. Settling soil had created a sag in the sewer line, allowing sewage to accumulate there and requiring maintenance crews to periodically flush the line.

WHEN: Marshbank's crews will work 7 a.m. to 4 p.m., Monday through Friday to repair sidewalk, curbs, curb ramps and the roadway.

WHAT TO EXPECT: King County Metro will re-route some buses around construction zones.

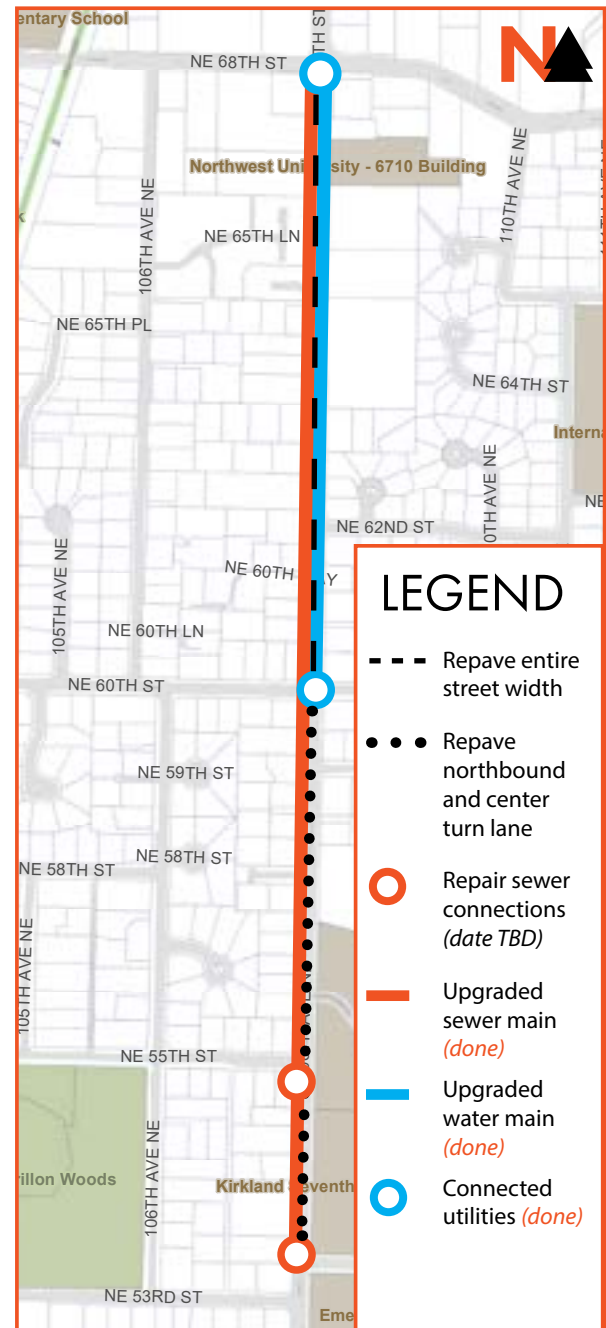
■ Commuters should expect significant travel delays while crews are repaving the road.

■ Marshbank will detour traffic around any closed sections of road and will shift travel lanes to accommodate construction zones.

■ The contractor will maintain access for local residents, mail, emergency responders and waste management.

VISIT: www.kirklandwa.gov/108thavewatersewer

CONTACT: Project Engineer Patrick Herbig, (425) 587-3841, pherbig@kirklandwa.gov; or Senior Outreach



Marshbank Construction returns in spring to complete the 108th Avenue Northeast project.

People with disabilities may request materials in alternate formats. Kirkland's policy is to fully comply with Title VI of the Civil Rights Act by prohibiting discrimination against any person on the basis of race, color, national origin or sex in the provision of benefits and services resulting from its programs and activities. Any

person who believes his/her Title VI protection has been violated, may file a complaint with the City. To request an alternate format, file a complaint or for questions about Kirkland's Title VI Program, contact the Title VI Coordinator at 425.587.3831 (TTY Relay: 711) or titleviordinator@kirklandwa.gov.

UPGRADING UTILITIES

What to expect when Kirkland upgrades water, sewer and stormwater systems



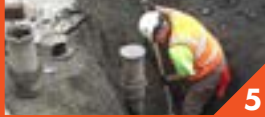
1 POTHOLING /SAWCUTTING



4 MAINTENANCE HOLES



2 TRENCHING



5 VALVES



6 SERVICE LINE CONNECTIONS



3 INSTALLING MAINS



7 PAVING/RESTORATION



City of Kirkland
Public Works Department
123 Fifth Avenue
Kirkland, WA 98033-6189

Cierres de calles

Para solicitar informacion en Español sobre el cierre de calles comuníquese con el Coordinador del Titulo VI, enviando un mensaje a titlevicoordinator@kirklandwa.gov o al número telefónico (425) 587-3831.

道路封闭

如果需要获取简体中文通告·请联系Title VI协调员。电邮：titlevicoordinator@kirklandwa.gov, 电话：(425) 587-3831。

Заккрытие улиц

Чтобы запросить этот документ на русском языке, пожалуйста, свяжитесь со старшим координатором по связям с общественностью Титул VI по адресу titlevicoordinator@kirklandwa.gov, (425) 587-3831.

Kirkland hires contractor to build Totem Lake Connector

The Kirkland City Council awarded on Oct. 20 a \$13.89 million-contract to Tukwila-based Walsh Construction to build the Totem Lake Connector pedestrian and bicycle bridge.

Walsh Construction could begin preparing the site—Cross Kirkland’s Corridor’s intersection with Northeast



124th Street and Totem Lake Boulevard—as early as December.

During the first six months of the bridge’s two-year construction process,

the contractor will be acquiring the materials—mainly steel—to build the bridge and piecing it together. That will take place off-site.

Visit www.kirklandwa.gov/totemlakeconnector or contact Senior Project Engineer Aaron McDonald, at amcdonald@kirklandwa.gov, (425) 587-3837.