





## [Safer Routes to School Walk Recommendations Map](#)

This map shows the preliminary [Safer Routes to School](#) Walk Recommendations being finalized for City Council consideration on August 5, 2020. (Bike recommendations are being developed in collaboration with the [2020 Active Transportation Plan](#) update process and are not included at this time.) The walk recommendations resulted from a year-long public engagement process and engineering analysis of Kirkland’s transportation network. More than 550 suggested projects were reviewed and analyzed by both City engineering staff and an independent engineering consultant. The resulting recommendations are categorized into four different project types:

Walk Recommendation Type		Quantity
<p><b>Sidewalk</b></p> 	<p>Sidewalks are generally located on City right-of-way (physical constraints could require property acquisition in some cases). Projects would meet the 5-footwide City standard, could be either asphalt or concrete, and separated from the road with a curb or planter strip.</p>	70
<p><b>Enhanced crosswalk lighting</b></p> 	<p>Crosswalks identified as lighting deficient would require a lighting analysis. Lighting improvement could be either a new LED light on existing pole or a new pole and light.</p>	28
<p><b>Enhanced crosswalk</b></p> 	<p>Crosswalk enhancements may include a pedestrian island, Rapid Flashing Beacon, narrowing the crossing with sidewalk bump outs, or less costly interim measures.</p>	41
<p><b>Enhanced crossing - multi-lane street</b></p> 	<p>Crosswalk enhancements to multi-lane streets may require more extensive treatment to slow traffic (e.g., traffic signal).</p>	6
<b>Total</b>		145

## Timeline:

March 2019–April 2020: Public outreach and development of walk recommendations.

April 21, 2020: City Council review of the initial project recommendations.

June 1-30, 2020: Vote on the projects you feel benefit your neighborhood or community the most. Your priorities will be used in developing the final list of recommendations for the City Council.

August 5, 2020: Staff will present the final recommendations and priorities to the City Council.

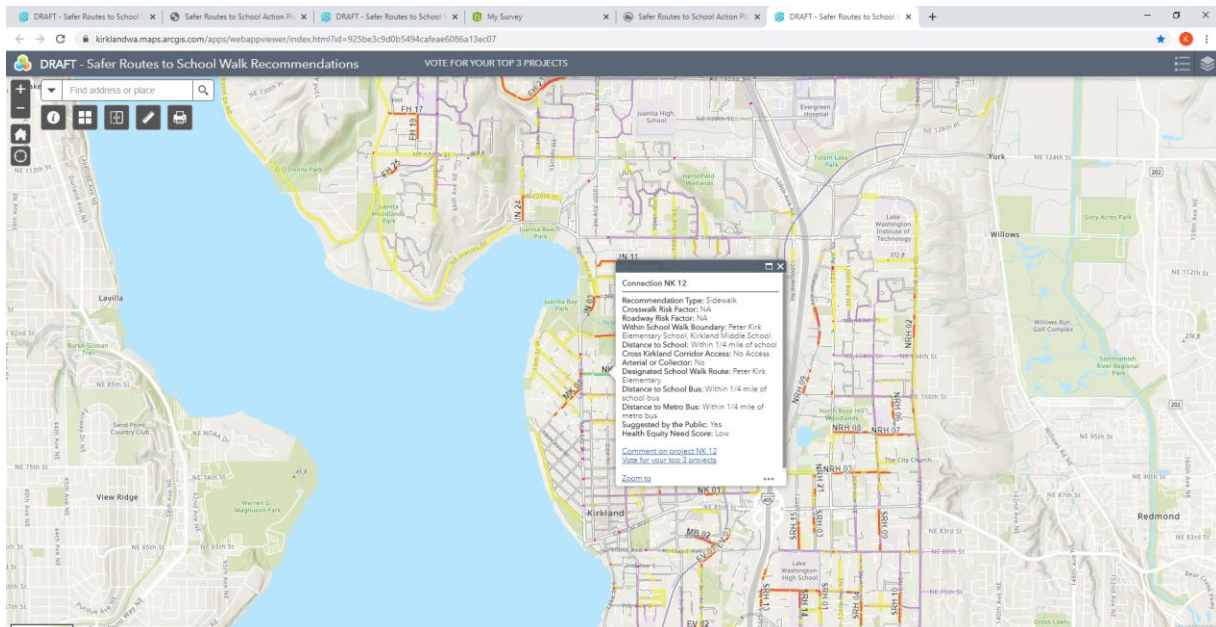
Once approved, the City Council and staff will use the final Walk Recommendations to help guide the City's funding priorities for up to 15 years (or with future updates to the Transportation Master Plan).

## Please Note:

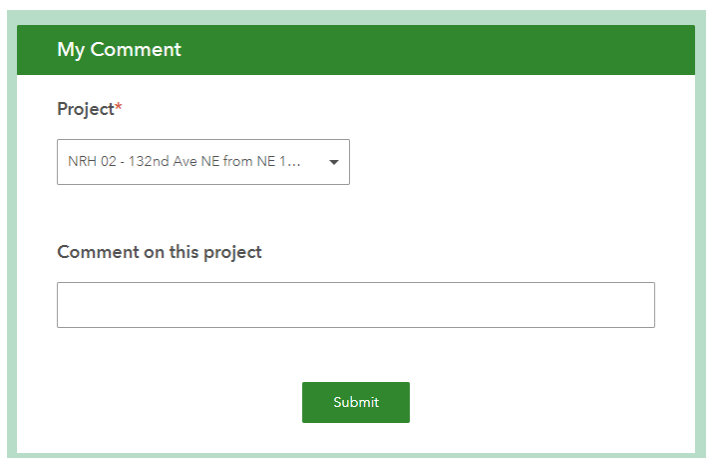
- A project on this map does not indicate a City of Kirkland commitment to funding.
- This map does not necessarily include all future safer routes to school projects that could be funded by the City or its partners.

## VOTE: JUNE 1 – 30

Click on a sidewalk or crosswalk improvement shown on the map to get a pop up showing information about that specific walk recommendation. The factors listed in the pop up will be used in City's [technical prioritization criteria](#). After reviewing the map and learning more about the projects, you may want to walk or drive by the projects with your school age children to determine family consensus and vote as a group. Each household can only vote once.

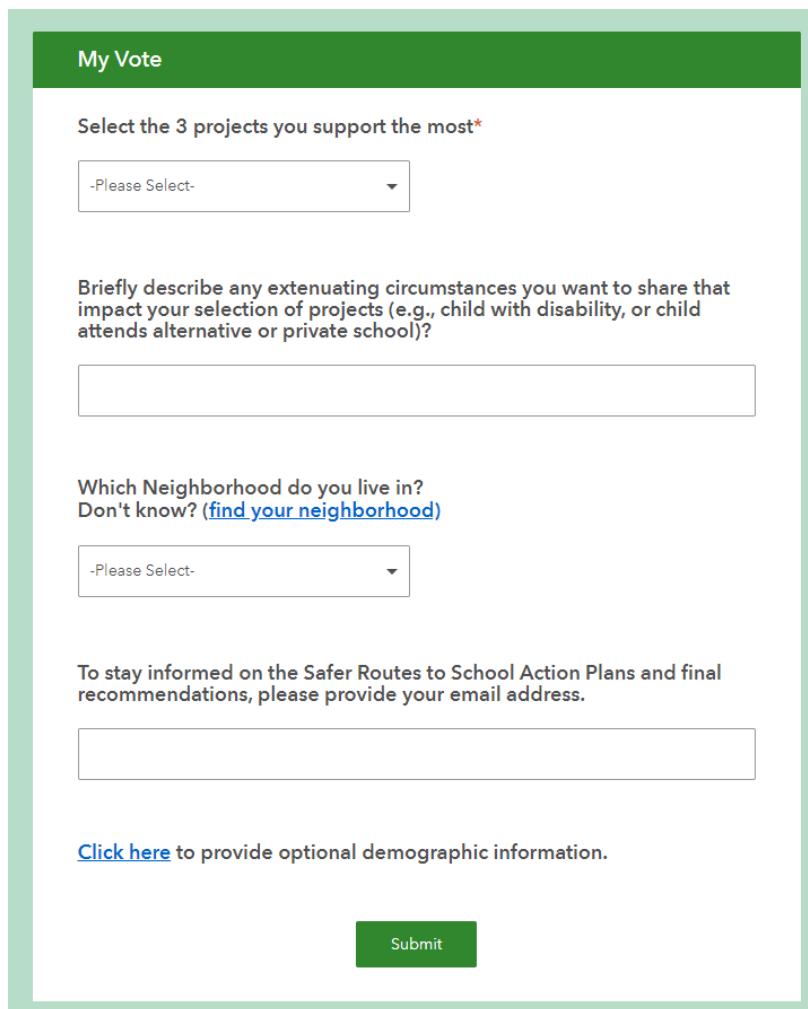


To make a comment, click the “submit a comment” link in the project pop up, or contact Kari Page at [KPage@kirklandwa.gov](mailto:KPage@kirklandwa.gov).



The 'My Comment' form features a green header with the title 'My Comment'. Below the header, there is a 'Project\*' label followed by a dropdown menu showing 'NRH 02 - 132nd Ave NE from NE 1...'. Underneath is a text area labeled 'Comment on this project' and a green 'Submit' button at the bottom.

Once you feel like you know enough about the projects, pick three projects you feel would benefit your neighborhood the most. Click “Vote for your top 3 projects” and select the project in the drop-down menu.



The 'My Vote' form has a green header with the title 'My Vote'. It begins with the instruction 'Select the 3 projects you support the most\*' and a dropdown menu currently set to '-Please Select-'. The next section asks, 'Briefly describe any extenuating circumstances you want to share that impact your selection of projects (e.g., child with disability, or child attends alternative or private school)?' with a text input field. This is followed by the question 'Which Neighborhood do you live in?' with a link '(find your neighborhood)' and another '-Please Select-' dropdown menu. A final section states, 'To stay informed on the Safer Routes to School Action Plans and final recommendations, please provide your email address.' with an email input field. A link 'Click here to provide optional demographic information.' is provided below. A green 'Submit' button is located at the bottom.

More information on the process used to develop this map is on the City’s [Safer Routes to School website](#).