



Capital Improvement Projects

maps.kirklandwa.gov

CITY OF KIRKLAND, WASHINGTON

Capital Improvement Programs

CIP Interactive Map Application

Tutorial

City of Kirkland
123 5th Ave
Kirkland, WA 98033
April, 2013

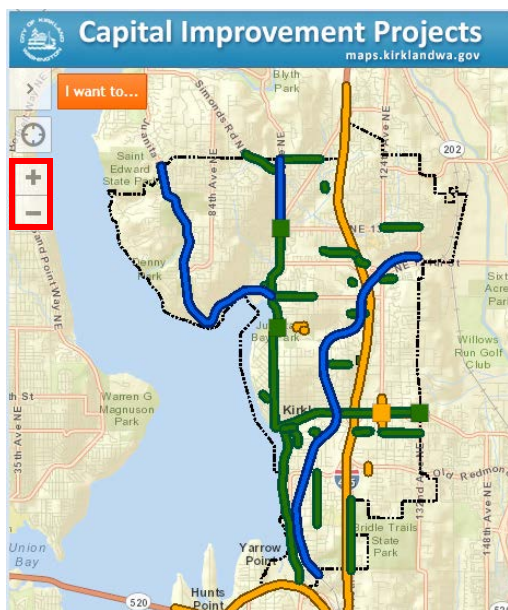
Table of Contents

How to Navigate?.....	2
How to Identify Features?.....	3-5
How to Submit a Project Idea?.....	6-7
How to Turn On/Off Layers?.....	8-9
How to get to the Original Map Position?.....	9
How to Display the Legend?.....	10
How to Find an Address or Intersection?.....	11

This application displays project information for Kirkland's Capital Improvement Program (CIP). Using your computer or select mobile device, you can explore all existing, planned, future, and recently completed projects to learn status, details, funding and even communicate directly with the project's manager. The "Suggest a Project" feature helps citizens voice their ideas for future projects to be considered by the capital improvement program. City staff and Council believe that this service will greatly improve communication and save time for citizens, businesses, and visitors alike.

Please use up-to-date Internet Browser to access the application.

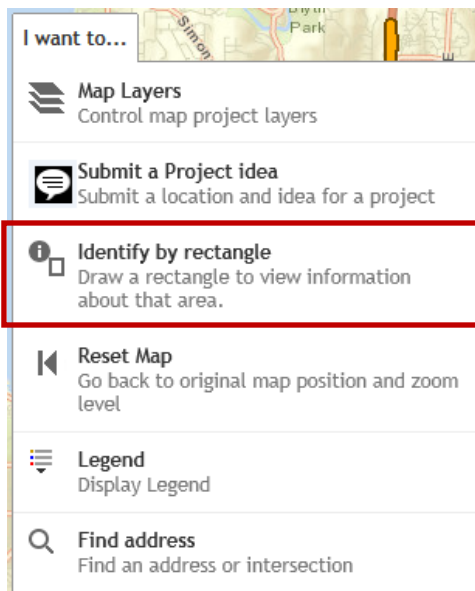
How to Navigate?



To navigate around the Capital Improvement Program (CIP) Interactive Map (maps.kirklandwa.gov hyperlink?), click the plus (+) or the minus (-) signs in to zoom in or out (see Figure 1). You can also zoom in or out by using the mouse scroll wheel. To pan around the map, left-click and hold down the mouse button, and the map extents will move with the cursor on the screen.

Figure 1. Navigation Tools

How to Identify Features?



Features on the map can be identified in several ways. First, use the "Identify by rectangle" tool in the "I want to..." menu (see Figure 11). This tool allows you to select one or many projects: drag on the map to draw a rectangle with your mouse over the project(s) you want. The features intersected by the rectangle will appear in the "Identify Results" window (see Figure 12).

Figure 11. "Identify by rectangle" Tool

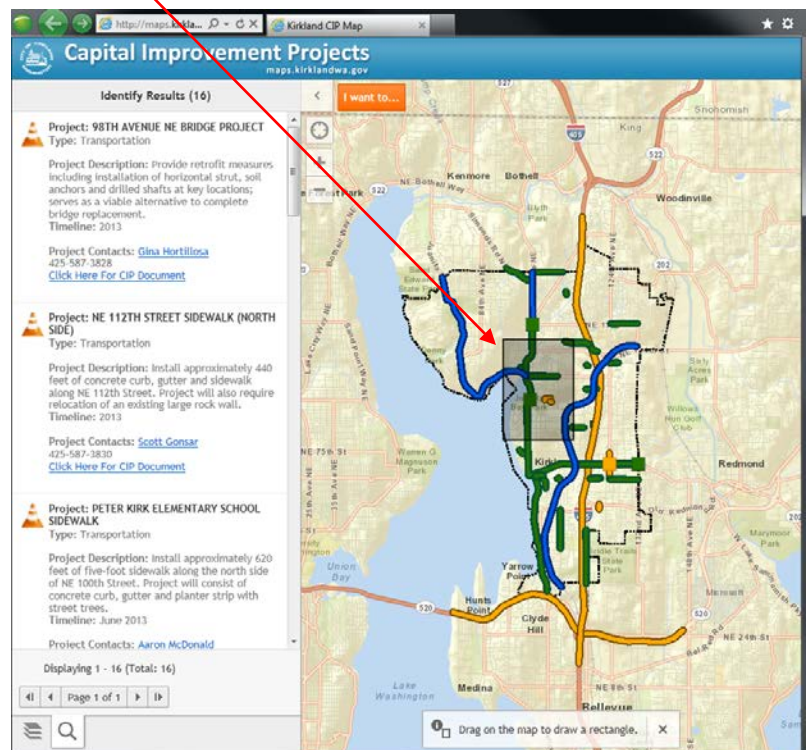


Figure 12. Using the "Identify by rectangle" Tool

Another way to identify features is by clicking a feature in the map. Information for that feature will then appear in the "Identify Results" window, clearing any previous project information in the process. Clicking on the "Project: <name>" in the "Identify Results" window will highlight the selected project on the map (see Figure 13).

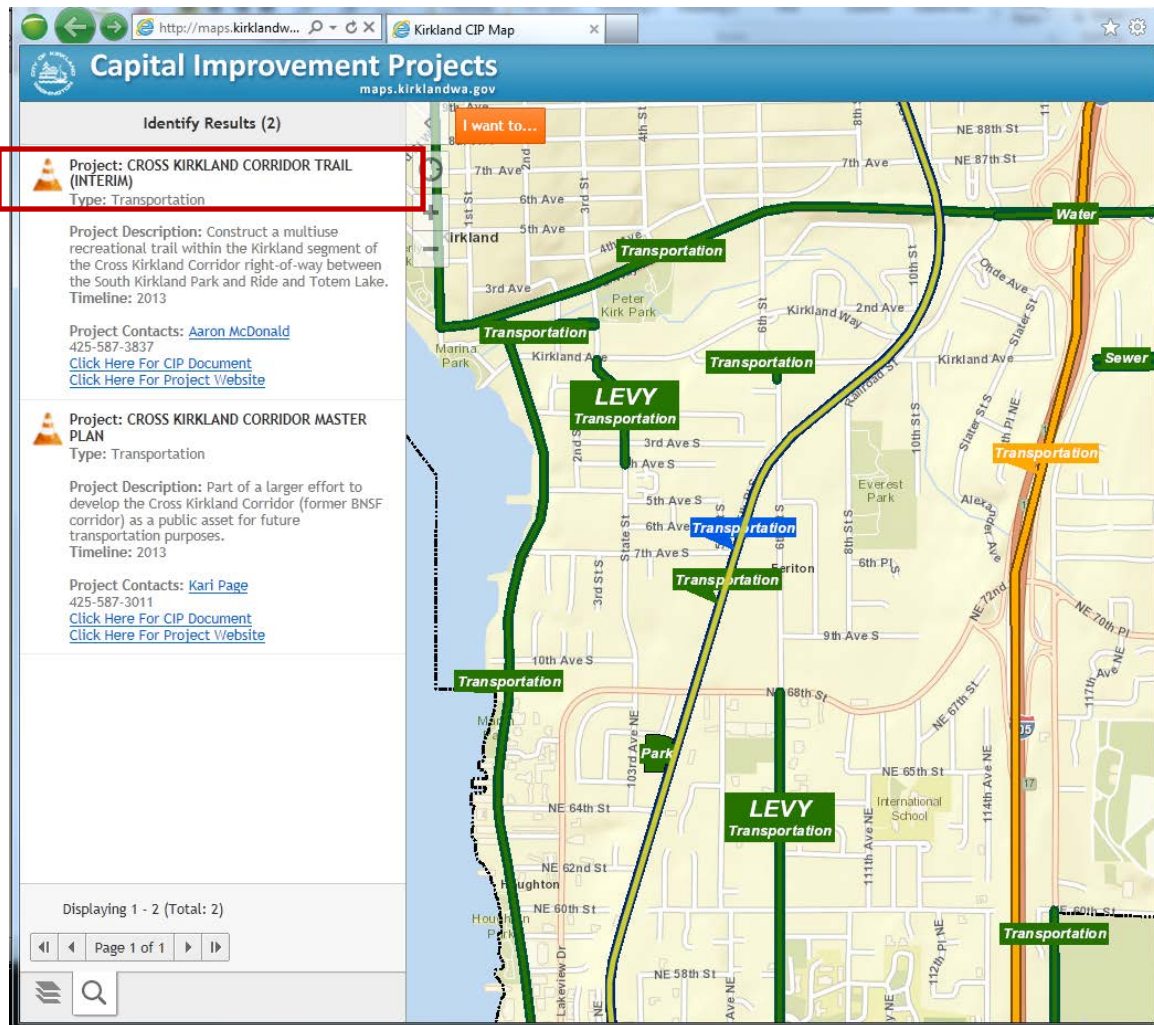


Figure 13. Identifying a Project

Below the project narrative appears project contact information and one or more links: “Project Contacts,” “Click Here For CIP Document,” and/or “Click Here For Project Web Site” (see Figure 14).

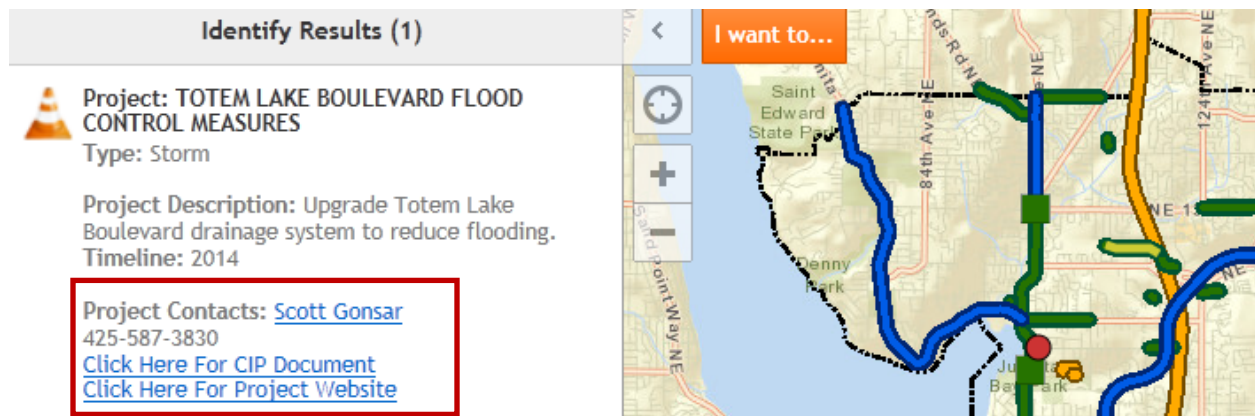


Figure 14 – CIP project links

CITY OF KIRKLAND CAPITAL IMPROVEMENT PROGRAM 2013 TO 2018		PROJECT # SD 0059 000
		DEPARTMENT Public Works
		DEPARTMENT CONTACT Dave Snider
PROJECT TITLE TOTEM LAKE BOULEVARD FLOOD CONTROL MEASURES		
PROJECT LOCATION Totem Lake Boulevard between 120th Avenue NE and 24th Avenue NE	PROJECT START 2007	PROJECT STATUS Modified Project
DESCRIPTION/JUSTIFICATION Totem Lake Boulevard has a history of flooding during mid to large storm events. Evaluation of the storm drainage system previously completed under this project has identified options for implementing flood control improvements. The improvements include emergency pumping and removal of sediment and vegetation along the conveyance channel. This work will reduce the frequency and magnitude of flooding on Totem Lake Boulevard.		
REASON FOR MODIFICATION (WHERE APPLICABLE) Project cost increased from \$565,400 to \$1,936,200 due to updated cost estimate for required work efforts (sediment and vegetation removal). Project completion date moved to 2014 for coordination with SD 0075.		
POLICY BASIS Surface Water Comprehensive Plan	PRIOR YEAR(S) BUDGET TO ACTUALS Budget \$565,400 Actual \$379,640 Balance \$205,760	METHOD OF FINANCING (%) Current Reven 57 % Reserve (\$218,000) 11 % Grants KC (\$621,000 over 4-yr) 32 % Other Sources 0 % Debt 0 % Unfunded 0 %
CAPITAL COSTS	Prior Year(s)	2013 2014 2015 2016 2017 2018 2013-2018 TOTAL Future Year(s) Total Project
Planning/Design/Engineering	261,400	277,800 139,700 0 0 0 0 417,500 0 678,900
In-House Professional	59,000	25,000 69,900 0 0 0 0 94,900 0 153,900
Right of Way Land Acquisition	0	0 0 0 0 0 0 0 0 0
Construction	265,000	0 838,400 0 0 0 0 838,400 0 1,103,400
Computer	0	0 0 0 0 0 0 0 0 0


By clicking the "Click Here For CIP Document" link, a new window will appear with the associated CIP funding document (2013 – 2018 adopted funding) for that feature or CIP project status web page(see Figure 15).



Totem Lake Flood Control Measures

Project Notice

August 10, 2011



Planning
Design
Construction
Complete

- Repair of surface water infrastructure
- Protect streets and above ground facilities
- Protect habitat and environment

Thank you in advance for your patience and cooperation as we make enhancements to your neighborhood.

Project Overview: The City of Kirkland in collaboration with King County Road Maintenance Crews will be addressing two drainage problems on Totem Lake Boulevard adjacent to Totem Lake Mall. Maintenance crews will remove sediment blocking the flow of water within the Washington State Department of Transportation (WSDOT) right of way drainage channel. Crews will also remove vegetation and debris that has accumulated in the stream's settling pond at the edge of the Totem Lake Mall parking lot. See vicinity map on reverse side.

Why: The Totem Lake area has experienced a number of flood events during the fall and winter months over the past few years. Development in the basin, natural erosion, and surface water runoff, combined with the growth of vegetation are restricting the stream's natural flow. The City has been required to close roads in the vicinity of Totem Lake due to flooding in the area. In response to these issues, a City sponsored Capital Improvement Project was developed with the majority of funding provided by the King County Flood Control Zone District's Sub-Regional Opportunity Fund.

When: Construction activity is expected to begin Friday, August 12 and be complete by the end of August. Typical hours of operation are Monday-Friday 7:00am to 5:00pm.

What to Expect: The following outlines some basic construction practices you can expect.

Traffic control: One of the two southbound lanes on Totem Lake Boulevard may be closed during construction hours. There may be inconvenience associated with driving through the work zone; traffic control and flagging operations may be in effect.

Emergency vehicle access: Access for emergency vehicles will be maintained throughout the construction process.

Once again, thank you in advance for your patience and cooperation as we make improvements to the Totem Lake Neighborhood. If you have any questions, please contact Noel Hupprich, PE at (425) 587-3829.

Noel Hupprich
Project Engineer
Phone: (425) 587-3829
Nhupprich@kirklandwa.gov

Figure 15. CIP Document PDF and CIP Project Site

How to Submit a Project Idea?

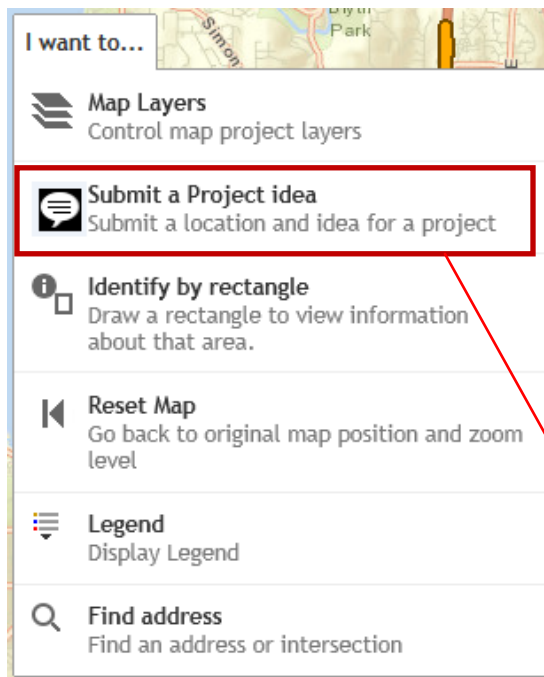


Figure 6. "Submit a Project Idea" Tool

CIP project ideas can be suggested to city CIP staff (Public Works and Parks/Community Services departments) using the "Submit a Project Idea" tool (see Figure 6). City staff will review and consider these suggestions for the next CIP update process.

To submit a project idea, please follow these three steps:

Step 1. Click the orange "I want to..." button and select the "Submit a Project Idea" tool. The "City of Kirkland Project Idea" window will appear on the left-hand side of the map (see Figure 7).

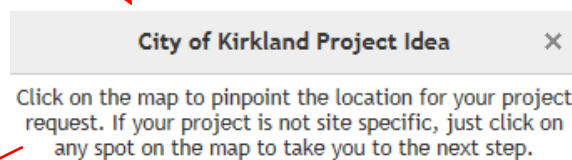


Figure 7. Project Idea Instructions



Figure 8. Project Idea Point Location

Step 2. When the window appears, navigate to the location of your proposed project and click the map. A red dot will appear on your map (see Figure 8). Figure 8 displays a suggested project idea at the intersection of 1ST ST and 6TH AVE.

City of Kirkland Project Idea ✕

Project Type: Crosswalk Improvement ▼

Describe your project idea: *
I would like to propose a new crosswalk at this location.

I would like staff to: Email me ▼

Optional if you want staff to contact you

My name: Kirkland Citizen

My email address:

My phone number:

* Required field

Please click one of the following links to learn about the City of Kirkland's Privacy, Linking and Title VI Policies.
[Privacy](#) [Linking](#) [Title VI](#)

Send Cancel

Step 3. Once the project location is mapped, a new "City of Kirkland Project Idea" window form will appear on the left-hand side of the map (see Figure 9). Enter the details about your idea in the spaces provided. Your idea will be directly e-mailed to city staff for their review. If you would like someone to follow up with you about your project, please enter your contact information. Check what you have entered for accuracy, and click "Send." A final dialogue box will appear acknowledging your submittal (see Figure 10). Click "OK."

Figure 9. Project Idea Form

City of Kirkland Project Idea ✕

Thank you for your suggestion. Working together creates better projects and a stronger community. Your request will be reviewed by the Capital Projects staff and a staff person will follow up with you if requested.

For questions and additional information contact

[Capital Projects Staff](#)

Neighborhood Services Coordinator.

425-587-3811

OK

Figure 10. City's Confirmation Page

How to Turn On/Off Layers?



Figure 2. "I want to..." menu

Map layers can be turned on/off in the "Map Layers" tool. The Active Projects and the Street Map have been set as the default layers whenever the map is first launched. But there are also several other layers that can be displayed on the map. These include Funded CIP Projects, Unfunded CIP Projects, Recently Completed Projects, Kirkland Neighborhoods, and Satellite imagery. To turn map layers on/off, follow these three steps:

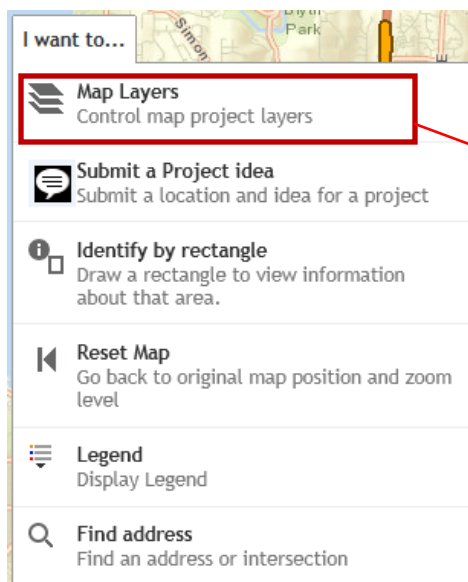


Figure 3. Map Layers

Step 1. Click the orange "I want to..." menu (Figure 2)

Step 2. Select the "Map Layers" option in the "I want to..." menu (see Figure 3). A Map Layers window will appear on the left-hand side of the map (see Figure 4).

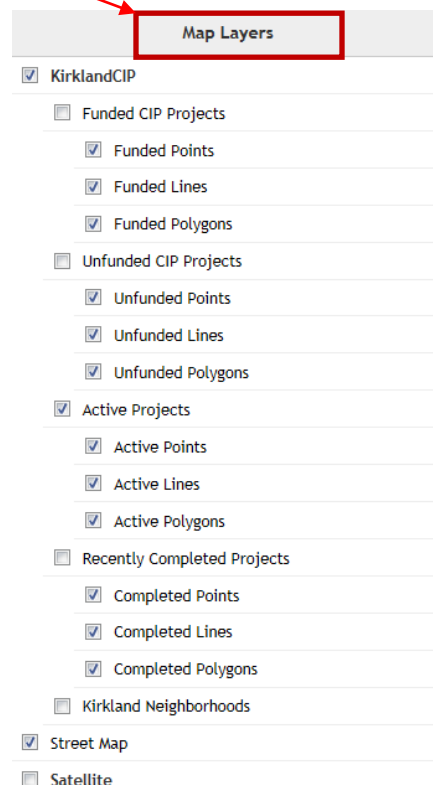


Figure 4. "Map Layers" Window

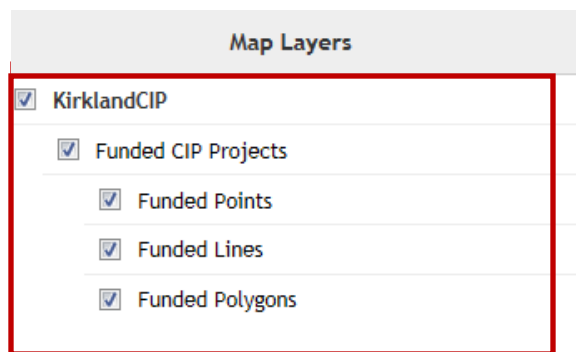


Figure 5. Funded CIP Projects in “Map Layers”

Step 3. In the “Map Layers” window, CIP project layers are organized in four headings below the “KirklandCIP” title. To turn any CIP project category on/off, check/uncheck the heading box and the sub-heading box. For example, to see “Funded Lines,” check the boxes for “Funded CIP Projects” and “Funded Lines” (see Figure 5). Other CIP project layers – in fact, all map layers – can be displayed or turned off the same way.

How to get to the Original Map Position?

To return to the original map position and zoom level, click the orange “I want to...” menu and then select “Reset Map” in the menu (see Figure 16). All layers that are turned on when this tool is clicked will display at the original map’s position and zoom level.

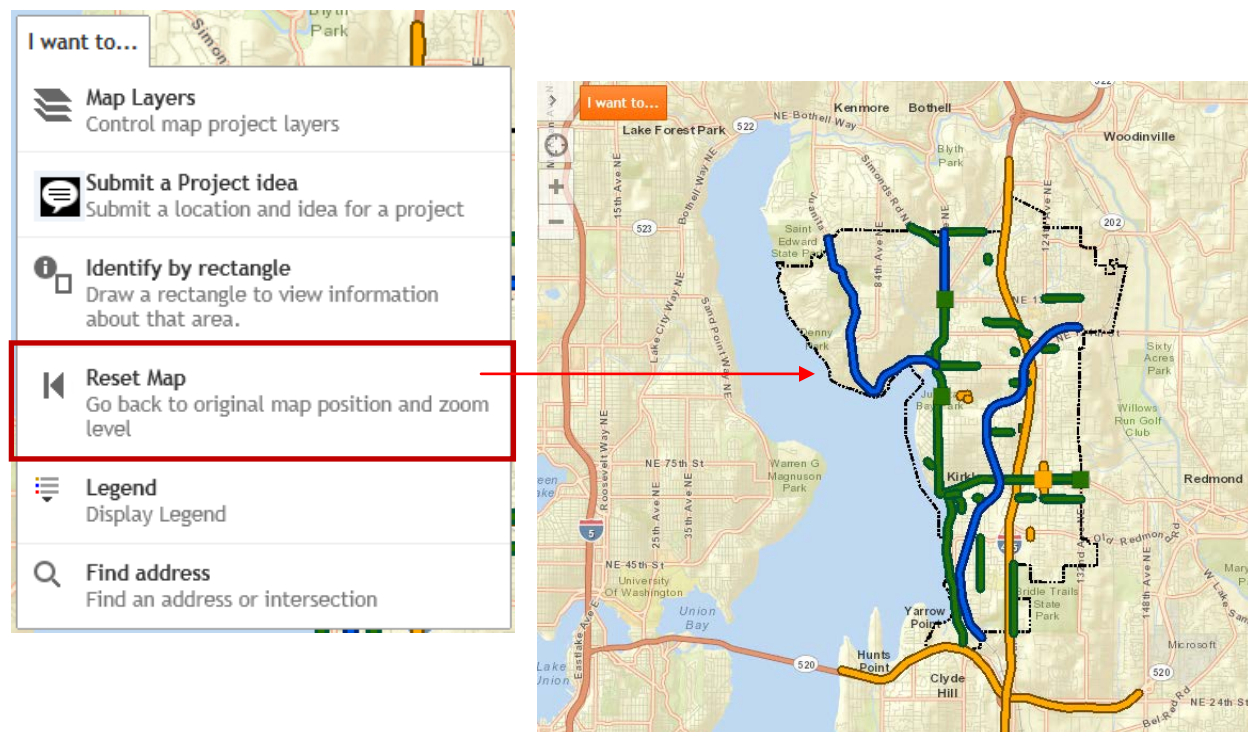
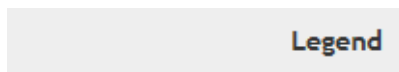
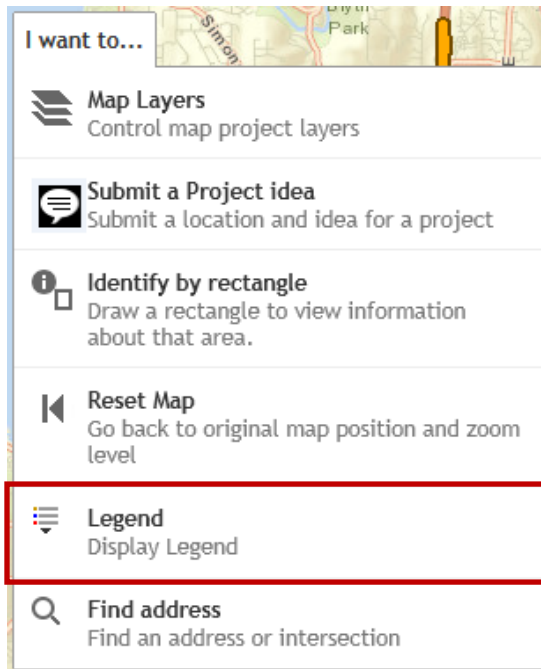


Figure 16. Original Map Position

How to Display the Legend?

The map legend contains the CIP project symbology and can be found in the "I want to..." menu under "Legend" (see Figure 17). Click on "Legend" and it will display on the left-hand side of the map.

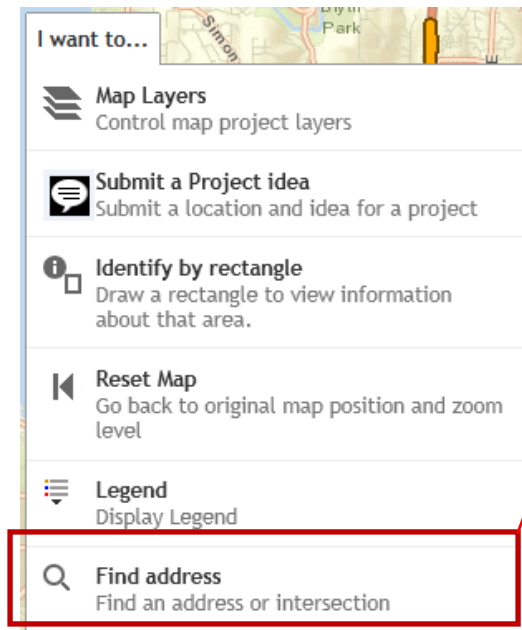


- Funded Projects**
 - Transportation
 - Utilities
 - Park
- Unfunded Projects**
 - - -●- - - Transportation
 - - -●- - - Utilities
 - - -●- - - Park
- Active Projects**
 - Planning Stage
 - Design Stage
 - Under Construction
- Completed Projects**
 - Recently Completed

Figure 17. "Legend" Tool

How to Find an Address or Intersection?

Kirkland addresses or intersections can be located using the “Find address” tool under the “I want to...” menu (see Figure 18).



After selecting the “Find address” tool, a window will appear on the left-hand side of the map (see Figure 19). Enter the address or intersection in the formats shown, then click “Find.”

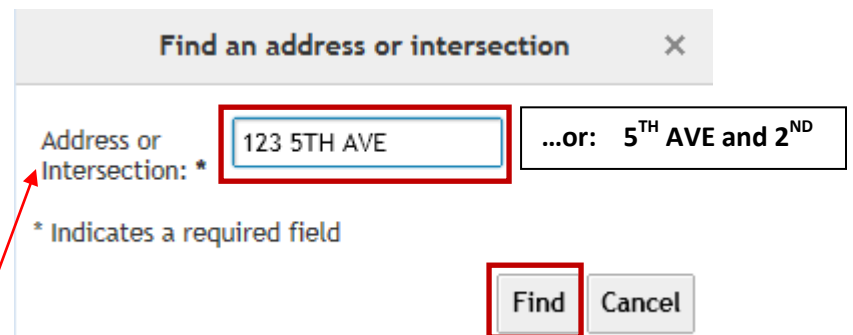


Figure 18. “Find address” tool

Figure 19. “Find an address or intersection” Window

If the address or intersection is found, a new window will appear that displays the search results. Click the one with the highest score, then click the “Select” button. The map will re-center to that location and a red dot will appear identifying the entered address or intersection (see Figure 20).

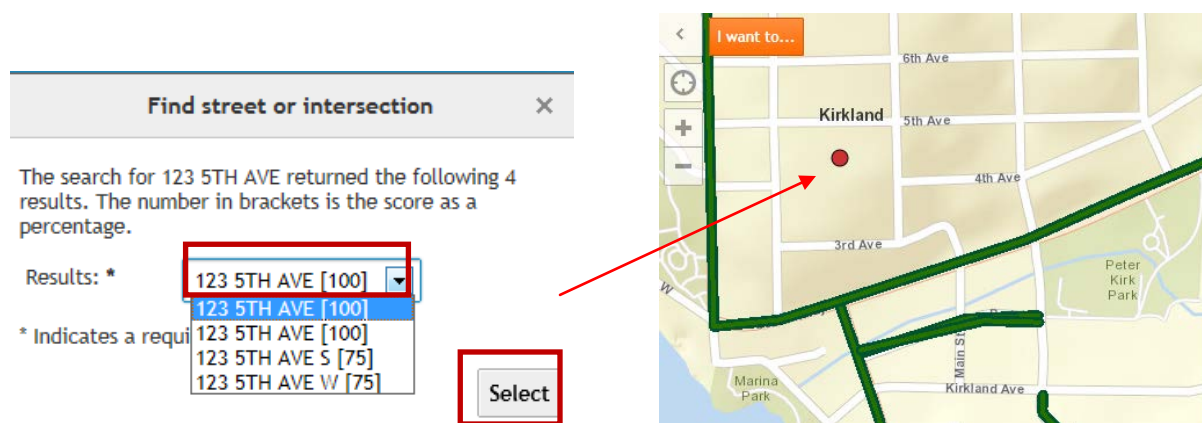


Figure 20. Map Result Using “Find address or intersection” Tool

If you have any questions, please contact City of Kirkland GIS Division: (425)587-3070.