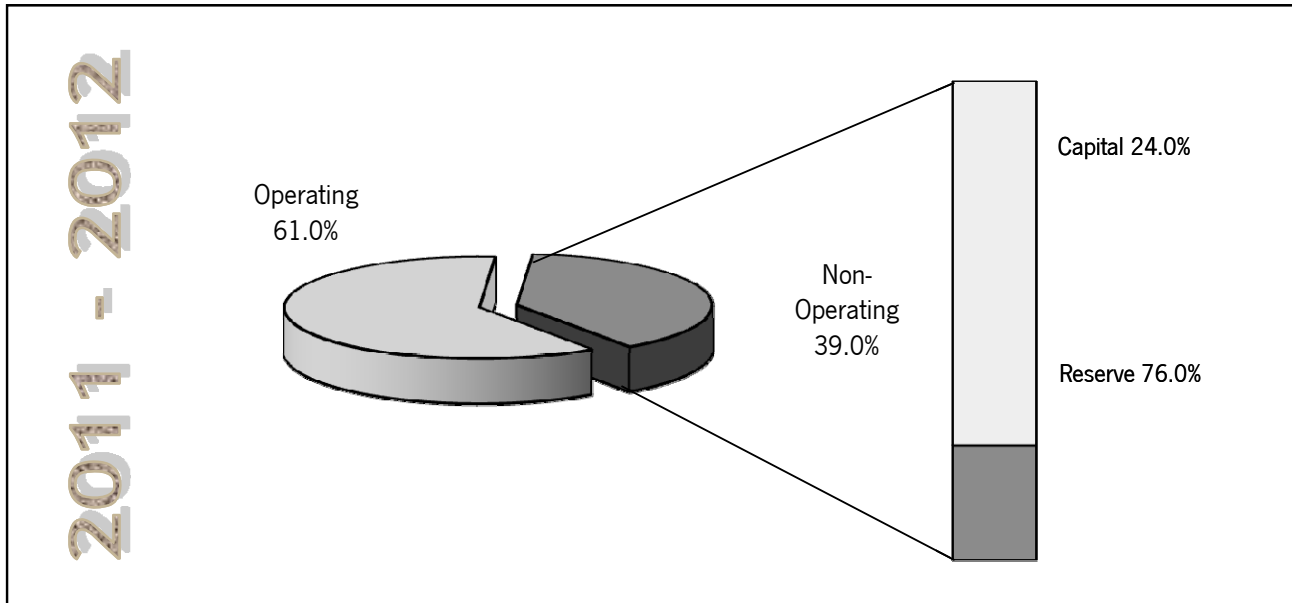


**CITY OF KIRKLAND
SURFACE WATER UTILITY
2011-2012 BUDGET SUMMARY: BY FUND TYPE/FUND**



The Surface Water Utility operating budget accounts for the operation and maintenance of the City's surface water system. The non-operating budget accounts for capital projects and reserves.

Analysis of Change

Fund	2009-10 Budget	2011-12 Budget	Percent Change
Operating Fund			
421 Surface Water Management	12,946,027	16,639,340	28.53%
Total Operating Fund	12,946,027	16,639,340	28.53%
Non-Operating Fund			
423 Surface Water Capital Projects	11,238,517	10,631,090	-5.40%
Total Non-Operating Fund	11,238,517	10,631,090	-5.40%
Total Surface Water Utility Funds	24,184,544	27,270,430	12.76%

CITY OF KIRKLAND
CHANGE IN FUND BALANCE (Beginning 2009 to Ending 2012)
SURFACE WATER UTILITY FUNDS

	Surface Water Management¹	Surface Water Capital Projects²	Total
2009 Actual Beginning Fund Balance	2,324,565	7,436,567	9,761,132
<i>Reserved</i>	<i>414,597</i>	<i>4,358,848</i>	<i>4,773,445</i>
<i>Unreserved Working Capital</i>	<i>1,909,968</i>	<i>3,077,719</i>	<i>4,987,687</i>
Plus: 2009-10 Estimated Revenues	10,707,377	3,882,651	14,590,028
Less: 2009-10 Estimated Expenditures	9,867,129	5,970,128	15,837,257
2009-10 Estimated Ending Fund Balance	3,164,813	5,349,090	8,513,903
Less: Funding for Carryovers to 2011	409,350	-	409,350
2011 Budgeted Beginning Fund Balance	2,755,463	5,349,090	8,104,553
Plus: 2011-12 Budgeted Revenues	13,883,877	5,282,000	19,165,877
Less: 2011-12 Budgeted Expenditures	14,972,722	5,030,385	20,003,107
2012 Budgeted Ending Fund Balance	1,666,618	5,600,705	7,267,323
<i>Reserved</i>	<i>412,875</i>	<i>5,600,705</i>	<i>6,013,580</i>
<i>Unreserved Working Capital</i>	<i>1,253,743</i>	-	<i>1,253,743</i>
Change in Fund Balance: Beginning 2009 to Ending 2012	(657,947)	(1,835,862)	(2,493,809)

Notes:

¹The decrease in fund balance of the Surface Water Management Fund is due to the variance of funding for capital projects.

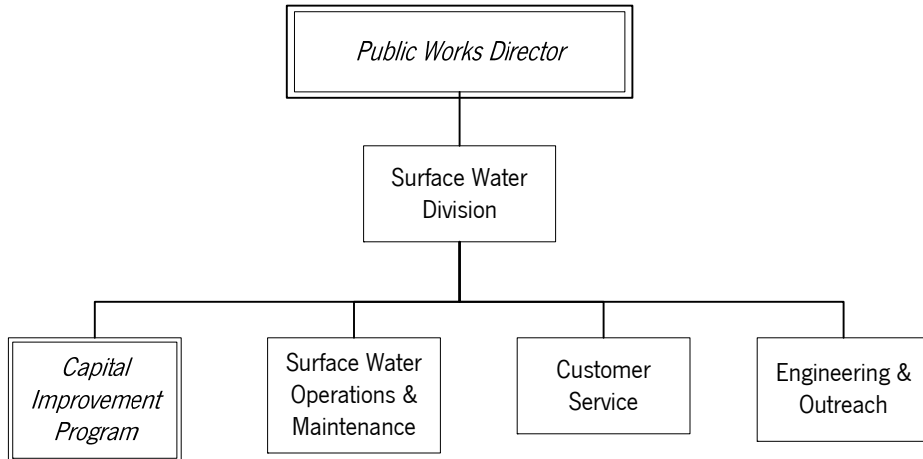
² The decrease in the Capital Projects Fund is due to the level of activity of capital projects.

OPERATING



CITY OF KIRKLAND
Public Works Department

Surface Water Management Fund



Boxes with a double outline and italic text indicate positions which report to this department but which are budgeted in a separate operating fund.



DEPARTMENT OVERVIEW

SURFACE WATER MANAGEMENT FUND

MISSION

The Surface Water Utility Division of the Public Works Department is responsible for operating and maintaining the City's surface water system, which includes constructed elements such as pipes and catch basins, and natural resources such as streams and lakes. The Utility has overall goals to protect the public interest, providing services that reduce flooding, improve water quality, and restore aquatic habitat.

DEPARTMENT FUNCTIONS

The **Surface Water Utility/Operations and Maintenance Division** operates, maintains, and repairs storm drain infrastructure including pipes, manholes, catch basins, ditches, and detention ponds. The storm drain system serves all residential, multifamily, and commercial customers.

The **Administration Division** accounts for all full-time, regular employee benefits, interfund charges and transfers for debt, and taxes paid to other jurisdictions.

The **Customer Service Division** conducts review of development proposals, ensures City compliance with state and federal surface water regulations, monitors the quality of water and aquatic habitat, investigates water quality and drainage complaints, conducts education and outreach programs, inspects private detention systems, and conducts watershed planning.

The **Capital Improvement Program** includes major (>\$50k) projects that meet Surface Water Utility goals such as installation or replacement of pipes and manholes, or restoration of stream channels. Construction of these projects is managed within the Capital Construction Division of Public Works, and is funded by the Surface Water Utility.

2009-2010 ACCOMPLISHMENTS

- Video inspected 89,672 lineal feet of stormwater mains and all mains onstreet overlay program.
- Rehabilitated 26 manholes prior to 2007 street overlay.
- Performed GIS map update for private storm water infrastructure.
- Completed 70% mapping of storm water infrastructure in Kirkland's annexation area with King County grant funds from Department of Ecology.
- Used Hansen Maintenance Management Information System (MMIS) for 2009-2010 annual Surface Water and Wastewater assets planning and maintenance.
- Utilized sewer and storm water video inspection vehicle to televise sewer main conditions and performed recommended proactive measures to prevent surface water flooding and sewer overflows.
- Completed field projects, including catch basin and storm drain maintenance, to ensure proper operation of the surface water system.
- Received FEMA funding to clean all catch basins on arterial snow routes, which was completed and billed accordingly, receiving \$20,112.47 to the storm water fund.
- Swept city streets an average of eleven times per year, and once every three days in the downtown corridor.
- Overlay system upgrades installed on time.
- Cleaned system with both educator trucks, including root removals and manhole and tank cleanings, with goal to complete City cleaning of storm system wall to wall within the city. Cleaned 878 manholes and 3598 catch basins and 10,388 lineal feet of pipe and removed roots from 660 lineal feet of storm pipe in 2009.

- Shifted Street Division staff to Surface Water Division to assist in cleanings of surface water conveyance system due to settled furlough negotiations in 2010.
- Updated City mapping system to include new system installations from development and addition of the storm conveyance system for the Bridle View Annexation.
- Rehabilitated 15 manholes in 2009.
- Rehabilitated 63 catch basins in 2009.
- Replaced 714 lineal feet of defective storm pipe in 2009.
- Installed 225 lineal feet of new storm pipe and 8 new catch basins in 2009.
- Storm water field staff received 572 hours of training, fulfilling NPDES Stormwater Permit requirements and other certification mandates.
- City of Kirkland staffer performed joint presentation with City of Vancouver, WA on the nexus of urban forests with surface water at the National StormCon Conference in Anaheim, CA.
- Worked with King County staff who managed and maintained annexation surface water retention/detention and conveyance systems to exchange information and tour various surface water facilities.
- Continued to manage beaver dam activity in the Juanita Watershed area.
- Enhanced various surface water retention/detention ponds with native plant materials in partnership with Parks Department staff and Public Works Grounds staff to reduce mowing and carbon outputs, and implementing shifting of field workloads due to settled furlough negotiations in 2010.
- Developed an ordinance, Kirkland Addendum, pre-approved plans and policies, and permit application documents and conducted a public input process for Council adoption of the 2009 *King County Surface Water Design Manual*. Adoption of updated surface water design regulations is a requirement for compliance with the NPDES Stormwater Permit.
- Developed an ordinance, analysis and presentations and conducted a public input process for Council adoption of updated water quality regulations as required by the NPDES Stormwater Permit.
- Staff participated in the Green Building Team and the Green Team and provided leadership in City sustainability initiatives.
- Enhanced and expanded public education and outreach:
 - Coordinated volunteer monitoring of water quality in Forbes Lake
 - Conducted volunteer events to remove invasive plants and plant native vegetation at three streamside locations
 - Provided stormwater education classes to about 2,000 elementary school children through Nature Vision
 - Provided education on natural yard care techniques to residents in the Juanita (spring 2009) and North Rose Hill Neighborhoods (fall 2010)
 - Developed education materials and recruited volunteers to encourage proper disposal of dog waste
 - Conducted outreach to streamside property owners via a grant from the King Conservation District
 - Participated in STORM, a regional education and outreach forum designed to coordinate programs between jurisdictions and the Puget Sound Partnership
 - Conducted research and analysis that will be used in refining existing education efforts and in developing new education programs
- Conducted review of the surface water portion of approximately 50 development proposals.
- Inspected approximately 500 private storm drainage systems and notified owners of required maintenance.
- Investigated and resolved 67 water quality and drainage complaints in 2009, and 43 through July of 2010.

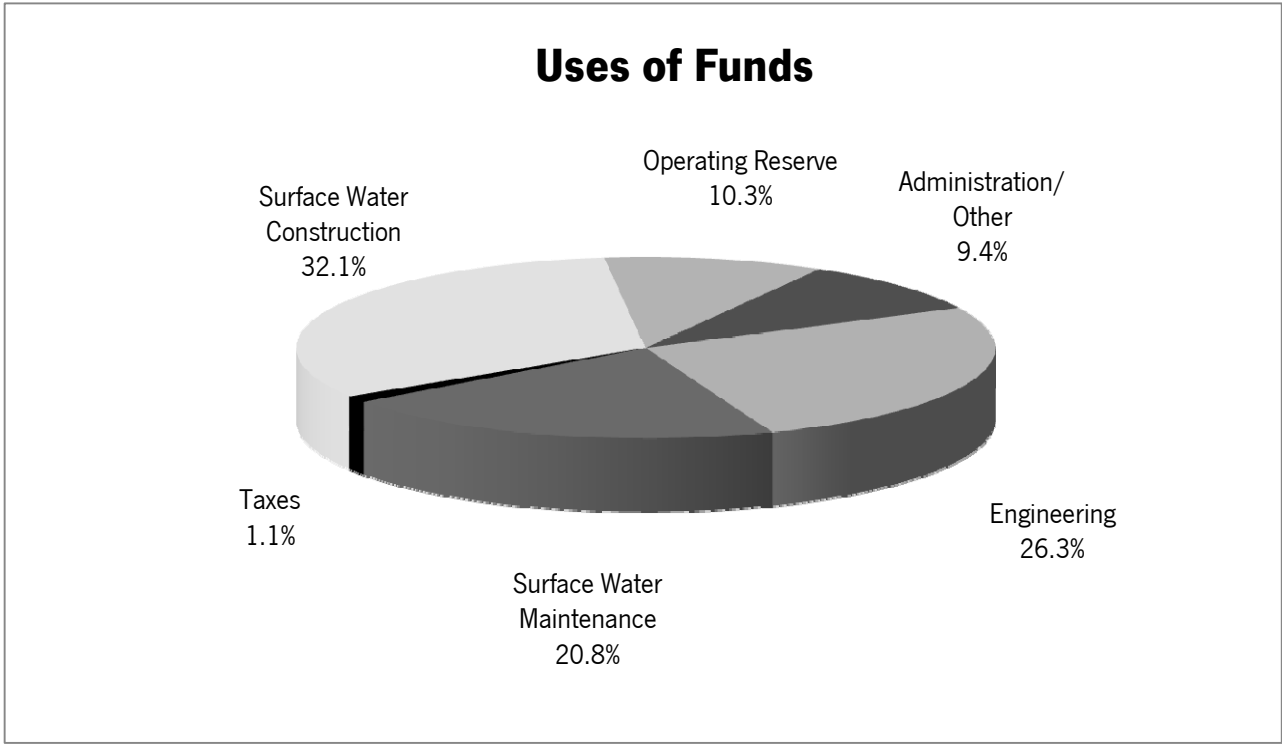
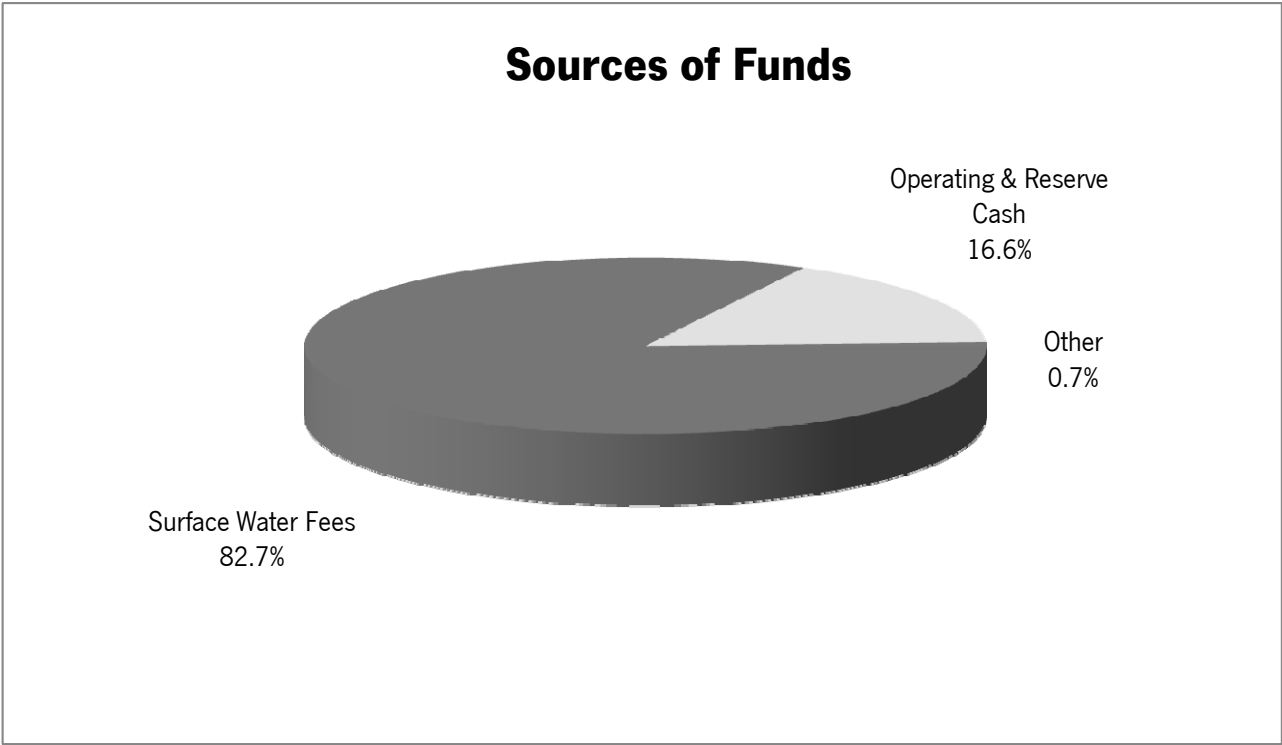
- Conducted visits to numerous businesses to discuss water quality protection and pollution prevention practices.
- Discovered and corrected several major cross-connections between the sanitary sewer and the storm drainage system.
- Conducted monitoring and provided detailed maintenance checklists for 3 stream and wetland mitigation sites.
- Produced Annual Report and Stormwater Management Program documents and maintained compliance with other aspects of the NPDES Stormwater Permit.
- Provided staff support and policy analysis to Council Member participating in the King County Flood Control Zone District Advisory Committee, the King Conservation District Advisory Committee and the WRIA 8 Salmon Recovery Council.
- Updated response plan and provided education/outreach to citizens in response to the threat of the West Nile Virus.
- Traced sources of bacteria in Juanita Creek that contributed to the closure of Juanita Beach and worked with King County Health Department to correct two failing septic systems that were contributing bacteria to the creek.
- In partnership with King County, conducted modeling and analysis of Juanita Creek via a \$600K grant from Ecology with the goal of planning for water quality and flow retrofitting in the Juanita Creek Watershed.
- Used GIS analysis of potential pollutant hot spots to prioritize stormwater outfalls for pollutant screening.
- Conducted annual sampling of aquatic invertebrates to develop the Index of Biotic Integrity for Juanita and Forbes Creeks.
- Encouraged the use of Low Impact Development stormwater control techniques through discussion with developers, inclusion of standard details and design guidelines in the Pre-Approved plans, and construction of a demonstration rain garden with interpretive signage.
- Partnered with the Lake Washington School District to construct Low Impact Development stormwater features on the 122nd Ave NE frontage between NE 70th and NE 80th Streets. This work was funded by the King County Flood Control Zone District Sub-Regional Opportunity Fund.
- Partnered with WSDOT to investigate and develop solutions to flooding of the NE 116th/I-405 interchange and associated impacts on Forbes Creek. Kirkland's portion of this work is funded by the King County Flood Control Zone District Sub-Regional Opportunity Fund.
- The Capital Projects Group managed design and construction of several surface water capital projects to address flooding, water quality, and aquatic habitat problems.

<h3>2011-2012 OBJECTIVES</h3>

- Continue education and outreach on surface water issues. Coordinate education/outreach with wastewater and drinking water utilities, and with solid waste programs.
- Work with Graffiti Removal Program to remove graffiti from stormwater structures, including culverts, CB/Manholes and other stormwater assets as soon as possible after reports or discovery of graffiti.
- Provide outreach, education, and restoration projects in partnership with Planning and Parks Departments to increase, protect, and preserve Kirkland's urban forests which reduce stormwater runoff.
- Continue private stormwater system inspection.
- Continue drainage and water quality complaint investigation/resolution.
- Continue to investigate and respond to citizen claims of damage due to public tree damage, flooding, and surface water concerns.
- Conduct education and outreach programs including community-based volunteer projects to control invasive species and plant native vegetation, monitoring water quality in Forbes Lake, education programs aimed at promoting behaviors that benefit water quality, and evaluating programs for effectiveness.

- Complete mapping of private detention systems and integrate data into City's GIS.
- Continue TV/Video Storm Conveyance system to apply data for maintenance management and replacement program needs through 2011 and 2012.
- Rehabilitate, replace, clean, and extend the life of stormwater structures and conveyance systems for 2011 and 2012 related to street overlays and system-wide as needed.
- Continue to manage beaver dam activity that threatens stormwater structure functions and has the potential for public asset and safety impacts.
- Update urban forest inventory database.
- Protect, remove, replace, and plant additional trees in right of way to increase Urban Forest Canopy to 40% over the next 10 years.
- Review development proposals in order to ensure that proposed infrastructure protects water quality and aquatic habitat to the extent possible.
- Improve aquatic habitat, reduce flooding, improve water quality, and reduce maintenance needs by constructing capital projects in stream channels or in other parts of the stormwater system.
- Improve water quality by adding water quality treatment and/or low impact development features to motorized and non-motorized transportation projects.
- Conduct inventory and evaluation of stormwater system and water resources in the annexation area, conduct watershed-level planning to protect and manage stormwater in a way that reduces flooding, improves water quality, and improves aquatic habitat.
- Update Surface Water Utility Master Plan to reflect updated priorities and to include programs and projects for the annexation area.
- Continue activities as required for NPDES Stormwater Permit compliance.
- Maintain financial stability by examining programs and surface water utility fee and rate structure and adjusting fees and/or programs appropriately.
- Participate in the Green Team and other efforts throughout the City that integrate and coordinate efforts that protect and sustain environmental quality in Kirkland.

**2011-2012 BUDGET
SURFACE WATER MANAGEMENT FUND**



2011-2012 BUDGET ANALYSIS

SURFACE WATER MANAGEMENT FUND

ANALYSIS OF CHANGES

2009-10 Approved Budget (Including Carryovers & Furlough Concessions)		12,946,027
One-Time Adjustments, Carryovers and Reserves	(2,976,613)	
Restore 2010 3.4% Wage Reductions and Related Reductions	33,135	
Total One-Time Adjustments and Carryovers		(2,943,478)
Less Annexation Service Packages Approved in 2010 (see below)		-
2009-10 Ongoing Budget		<u>10,002,549</u>
2011-12 Basic Budget Changes:		
Salaries & Wages	(98,518)	
Employee Benefits	161,152	
Fleet - Internal Services Rate	(67,292)	
IT - Internal Services Rate	30,464	
Facilities - Internal Services Rate	(8,396)	
Central Service Charges	115,579	
Surface Water Capital Improvement Projects and Other Transfers	1,932,728	
Net Miscellaneous Adjustments	(12,550)	
Total Basic Budget Changes		2,053,167
2011-12 Basic Budget Changes as Percent of 2009-10 Ongoing Budget		20.53%
2011-12 Basic Budget (Excluding Ongoing Annexation Service Packages Approved in 2010)		12,055,716
Expenditure Reductions		
2011-12 Department Expenditure Reductions	-	
2011-12 Reductions due to Internal Service Rate Changes	(47,185)	
Total 2011-12 Expenditure Reductions		(47,185)
2011-12 Expenditure Reductions as Percent of 2011-12 Basic Budget		-0.39%
Service Packages		
Department Service Packages	37,011	
Service Packages Requested/Funded by Other Departments	-	
Total 2011-12 Service Packages		37,011
2011-12 Service Packages as Percent of 2011-12 Basic Budget		0.31%
Subtotal 2011-12 Budget Before Annexation		12,045,542
Annexation:		
Ongoing Annexation Service Packages Approved in 2010	-	
2011-12 Annexation Service Packages	2,247,053	
Interfund Adjustments	608,713	
Total Annexation Costs		2,855,766
Annexation Costs as Percent of 2011-12 Basic Budget		23.69%
Changes Due to Fund Restructuring:		
Fund Restructuring Changes as Percent of 2011-12 Basic Budget		0.00%
Reserves		1,738,032
2011-12 Adopted Budget (Including Annexation & Fund Changes)		<u>16,639,340</u>

COMPARISON OF 2009-10 BUDGET TO 2011-12 BUDGET

	Difference	% Change
2009-10 Approved Budget to 2011-12 Adopted Budget	3,693,313	28.53%

2011-2012 FINANCIAL OVERVIEW

SURFACE WATER MANAGEMENT FUND

FINANCIAL SUMMARY BY OBJECT

	2007-2008 Actual	2009-2010 Estimate	2009-2010 Budget	2011-2012 Budget	Percent Change
Salaries and Wages	1,829,889	2,162,727	2,243,300	3,362,450	49.89%
Benefits	637,583	797,246	924,365	1,476,273	59.71%
Supplies	231,460	314,073	335,124	605,760	80.76%
Other Services	2,168,532	2,956,795	3,119,164	2,937,048	-5.84%
Government Services	4,853,451	3,594,906	3,601,500	6,495,178	80.35%
Capital Outlay	47,700	41,282	53,026	58,013	9.40%
Reserves	-	-	2,669,548	1,704,618	-36.15%
TOTAL	9,768,615	9,867,029	12,946,027	16,639,340	28.53%

FINANCIAL SUMMARY BY DIVISION

	2007-2008 Actual	2009-2010 Estimate	2009-2010 Budget	2011-2012 Budget	Percent Change
Customer Service	1,170,537	1,423,162	1,702,868	2,192,909	28.78%
Administration	2,295,347	3,093,031	5,890,580	6,216,577	5.53%
Capital Construction	4,687,490	3,397,001	3,389,334	5,299,213	56.35%
Operations and Maint.	1,615,241	1,953,835	1,963,245	2,930,641	49.28%
TOTAL	9,768,615	9,867,029	12,946,027	16,639,340	28.53%

POSITION SUMMARY BY DIVISION

	2007-2008 Actual	Adjustments	2009-2010 Budget	Adjustments	2011-2012 Budget
Customer Service	3.70	1.50	5.20	2.50	7.70
Administration	1.64	0.50	2.14	-0.45	1.69
Capital Construction	0.00	0.00	0.00	0.00	0.00
Operations and Maint.	10.05	1.10	11.15	5.50	16.65
TOTAL	15.39	3.10	18.49	7.55	26.04

2011-2012 POSITION SUMMARY

SURFACE WATER MANAGEMENT FUND

POSITION SUMMARY BY CLASSIFICATION

Classification	2009-2010 Positions	Budget Reductions	Service Packages	Annexation Positions	Reallocations	2011-2012 Positions	Budgeted 2011 Salary Range
Development Engineering Manager	0.25					0.25	7,597 - 9,802
Internal Services Manager	0.05					0.05	6,483 - 8,366
Stormwater/Sewer Division Manager	0.50					0.50	6,483 - 8,366
Surface Water Engineer Supervisor	0.95					0.95	6,420 - 8,284
Surface Water Utility Engineer	2.00			1.00		3.00	5,942 - 6,990
Urban Forester	0.50					0.50	5,542 - 6,520
Surface Water Systems Engineer	1.00					1.00	5,520 - 6,495
Senior Public Works Accountant	0.20				(0.20)	0.00	
Education Outreach Specialist	0.50			0.50		1.00	5,202 - 6,121
Leadperson	0.80					0.80	4,975 - 6,003
Surface Water Lead	0.00			1.00		1.00	4,975 - 6,003
GIS Analyst	0.25			0.25		0.50	5,082 - 5,978
Water Quality Inspector	0.00			1.00		1.00	5,010 - 5,895*
Field Arborist	0.50			0.50		1.00	4,278 - 5,527
Senior Maintenance Person	3.25			2.75		6.00	4,174 - 5,392
Yard Maintenance & Inventory Control Person	0.15					0.15	4,174 - 5,392
Utility Craftsperson	0.15			0.50		0.65	3,890 - 4,973
Permit Technician	0.20					0.20	4,195 - 4,935
Accounting Support Associate IV	0.35				(0.25)	0.10	4,007 - 4,714
Groundsperson	0.30			0.10		0.40	3,286 - 4,519
Utilityperson	6.00			2.40		8.40	3,286 - 4,519
Public Works Office Specialist	0.25					0.25	3,585 - 4,218
Data Entry Clerk	0.34					0.34	3,245 - 3,818
TOTAL	18.49	0.00	0.00	10.00	(0.45)	28.04	

*Salary range for new position is estimate only

**City of Kirkland
2011-12 Budget**

Revenue

		2007-08 Actual	2009-10 Estimate	2009-10 Budget	2011-12 Budget	Percent Change
Fund: Surface Water Mgmt Utility (421)						
Intergovernmental Revenue						
Direct Federal Grants						
Dept of Homeland Security	3319703	27,779	17,677	17,239	0	0.00%
Total for Direct Federal Grants:		27,779	17,677	17,239	0	0.00%
State Grants						
Military Department	3340180	2,585	2,946	2,873	0	0.00%
Dept of Ecology	3340310	0	24,518	50,000	0	0.00%
Total for State Grants:		2,585	27,464	52,873	0	0.00%
Interlocal GrantsEntitlements						
Waste Reduction Recycling	3370804	0	49,150	49,150	0	0.00%
King Conservation District	3370805	0	11,993	0	0	0.00%
Total for Interlocal GrantsEntitlements:		0	61,143	49,150	0	0.00%
Intergovt Service Revenues						
Intergovt-Other Gen Govt Svcs	3381901	0	10,161	0	0	0.00%
Total for Intergovt Service Revenues:		0	10,161	0	0	0.00%
Total for Intergovernmental Revenue:		30,364	116,445	119,262	0	0.00%
Charges for Goods and Services						
Physical Environment						
Residential Storm Drainage Fee	3438301	4,678,882	4,901,639	4,775,000	6,608,169	38.39%
Commercial Storm Drainage Fees	3438302	5,188,793	5,297,276	5,275,000	7,158,851	35.71%
Total for Physical Environment:		9,867,675	10,198,915	10,050,000	13,767,020	36.98%
InterfundInterdep Sales Svc						
Interfund-Other Gen Govnmt	3491901	111,422	134,045	42,000	42,000	0.00%
Interfund Engineering-CIP Eng	3493202	307,656	93,392	300,000	24,000	-92.00%
Total for InterfundInterdep Sales Svc:		419,078	227,437	342,000	66,000	-80.70%
Total for Charges for Goods and Services:		10,286,753	10,426,352	10,392,000	13,833,020	33.11%
Miscellaneous Revenues						
Interest and Other Earnings						
Investment Interest	3611101	169,633	141,599	106,200	46,857	-55.87%
Int on Sales Tax Contract AR	3614001	0	12,239	0	0	0.00%
Total for Interest and Other Earnings:		169,633	153,838	106,200	46,857	-55.87%
Other Misc Revenues						
Other Judgements Settlements	3694001	2,610	8,802	2,000	2,000	0.00%
Other Misc Revenue	3699001	68	1,940	2,000	2,000	0.00%

**City of Kirkland
2011-12 Budget**

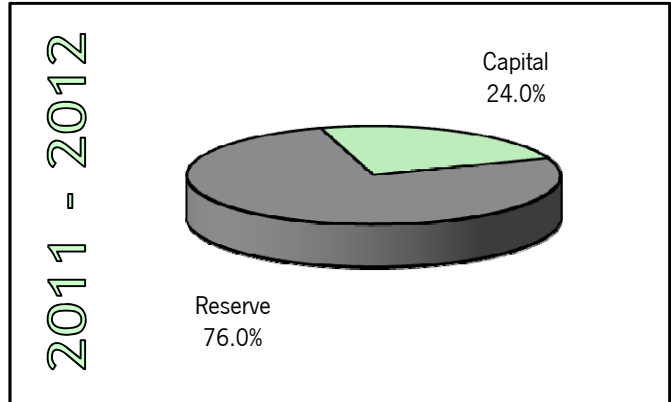
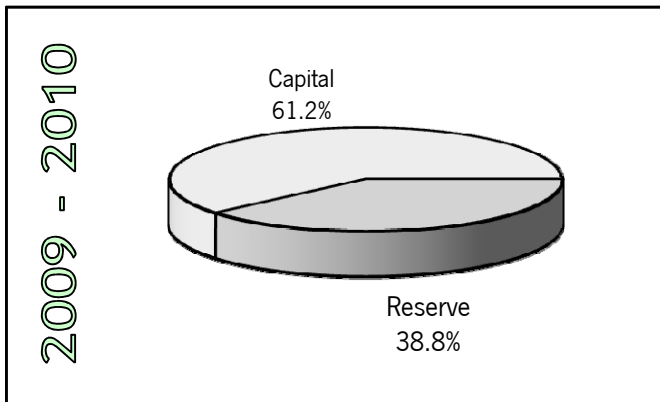
Revenue

	2007-08 Actual	2009-10 Estimate	2009-10 Budget	2011-12 Budget	Percent Change
Total for Other Misc Revenues:	2,678	10,742	4,000	4,000	0.00%
Total for Miscellaneous Revenues:	172,311	164,580	110,200	50,857	-53.85%
Other Financing Sources					
Resources Forward					
Resources Forward 3999901	0	0	2,324,565	2,755,463	18.53%
Total for Resources Forward:	0	0	2,324,565	2,755,463	18.53%
Total for Other Financing Sources:	0	0	2,324,565	2,755,463	18.53%
Total for Surface Water Mgmt Utility:	10,489,428	10,707,377	12,946,027	16,639,340	28.52%

NON-OPERATING



CITY OF KIRKLAND SURFACE WATER UTILITY



2009-2010 BUDGET SUMMARY: BY PURPOSE

Fund	2009-10 Budget	Purpose			
		Reserve	Debt	Capital	Other
423 Surface Water Capital Projects	11,238,517	4,358,848	-	6,879,669	-
Total Non-Operating Funds	11,238,517	4,358,848	-	6,879,669	-

2011-2012 BUDGET SUMMARY: BY PURPOSE

Fund	2011-12 Budget	Purpose			
		Reserve	Debt	Capital	Other
423 Surface Water Capital Projects	10,631,090	8,084,890	-	2,546,200	-
Total Non-Operating Funds	10,631,090	8,084,890	-	2,546,200	-



CITY OF KIRKLAND

SURFACE WATER UTILITY CAPITAL PROJECTS FUND

Capital Projects Funds are used to fund and track the construction of projects approved in the Capital Improvement Program. The City Council adopts a six-year Capital Improvement Program (CIP) which is a plan for major improvements or purchases needed in the areas of transportation (streets, sidewalks, signals, and intersections), storm drains, water and sewer systems, parks, public safety, and other general government facilities and equipment. The Council revises the CIP biennially. The Surface Water portion of the CIP includes only those projects associated with the surface water utility.

The **Surface Water Capital Projects Fund** accounts for surface water projects which are ultimately funded by a portion of the surface water fees paid by all property owners within the City. Included in the fund is the Surface Water CIP Contingency and the Surface Water Reserve. The former has a target of ten percent of the funded six-year Surface Water CIP and provides a cushion in the event of unanticipated changes in project scope or cost. The latter is comprised of depreciation funding from a portion of the surface water fees for funding future replacement of the Surface Water infrastructure.

**CITY OF KIRKLAND
 CAPITAL IMPROVEMENT PROGRAM
 2011-2012 BUDGET**

SURFACE WATER CAPITAL PROJECTS FUND (423)

Project Category/ Project Title	Project Number	Funding Source
SURFACE WATER MANAGEMENT		
Annual Replacement Of Aging/Failing Infrastructure	SD 0047	Surface Water Rates
Forbes Creek/Coors Pond Channel Grade Controls	SD 0053	Surface Water Rates
Surface Water Sediment Pond Reclamation Ph II	SD 0058	Surface Water Rates
Totem Lake Boulevard Flood Control Measures	SD 0059	Surface Water Rates
NE 129th Place/Juanita Creek Rockery Repair	SD 0067	Surface Water Rates
Totem Lake Surface Water Opportunity Program	SD 0072	Surface Water Rates
Forbes Creek Surface Water Opportunity Program	SD 0073	Surface Water Rates
Annual Streambank Stabilization Program	SD 8888	Surface Water Rates
Annual Storm Drain Replacement Program	SD 9999	Surface Water Rates
TOTAL SURFACE WATER CAPITAL PROJECTS FUND		

2011 Budget	2012 Budget	Estimated Total Project Cost	Additional Annual Maintenance & Operations	
			2011	2012
200,000	200,000	1,200,000	0	0
0	101,000	855,900	0	0
0	115,400	832,800	0	0
117,000	0	117,000	0	0
0	115,500	338,800	0	0
500,000	0	500,000	0	0
500,000	0	500,000	0	0
0	57,700	835,400	0	0
0	922,600	2,670,400	0	0
1,317,000	1,512,200	7,850,300	0	0

**City of Kirkland
2011-2016 Capital Improvement Program**

SURFACE WATER MANAGEMENT UTILITY PROJECTS

Funded Projects:

Project Number	Project Title	Prior Year(s)	2011	2012	2013	2014	2015	2016	2011-2016 Total	Funding Source			
										Current Revenue	Reserve	Debt	External Source
SD 0047	Annual Replacement of Aging/Failing Infrastructure		200,000	200,000	200,000	200,000	200,000	200,000	1,200,000	1,200,000			
SD 0051	Forbes Creek/KC Metro Access Road Culvert Enh.	232,200		733,700					733,700				44,000
SD 0053	Forbes Creek/Coors Pond Channel Grade Controls	260,200		570,700		184,200			855,900				
SD 0058	Surface Water Sediment Pond Reclamation Phase II			115,400		114,200			832,800				
SD 0059+	Totem Lake Boulevard Flood Control Measures		117,000						117,000				117,000
SD 0067	NE 129th Place/Juanita Creek Rockery Repair			115,500					338,800				
SD 0072	Totem Lake Surface Water Opportunity Program		500,000						500,000				
SD 0073	Forbes Creek Surface Water Opportunity Program		500,000						500,000				
SD 8888*	Annual Streambank Stabilization Program			57,700		165,800		311,900	835,400				
SD 9999*	Annual Storm Drain Replacement Program			922,600		923,800		350,000	2,670,400				
Total Funded Surface Water Management Utility Projects		492,400	1,317,000	1,512,200	2,330,900	1,588,000	974,000	861,900	8,584,000	8,423,000	0	0	161,000

Unfunded Projects:

Project Number	Project Title	Total
SD 0045^	Carillon Woods Erosion Control Measures	549,600
SD 0046#	Regional Detention in Forbes and Juanita Creek Basins	2,810,200
SD 0048*	Cochran Springs / Lake Washington Blvd Crossing Enh.	1,637,100
SD 0049#	Forbes Creek/108th Avenue NE Fish Passage Improvements	332,900
SD 0050#	NE 95th Street/126th Avenue NE Flood Control Measures	55,900
SD 0052^	Forbes Creek/Slater Avenue Embankment Stabilization	139,700
SD 0054#	Forbes Creek/BNSFRR Fish Passage Improvements	424,200
SD 0055	Forbes Creek / 98th Avenue NE Riparian Plantings	75,500
SD 0056^	Forbes Creek Ponds Fish Passage/Riparian Plantings	213,000
SD 0061^	Everest Park Stream Channel/Riparian Enhancements	1,095,500
SD 0062^	Stream Flood Control Measures at Kirkland Post Office	345,400
SD 0063^	Everest Creek/Slater Avenue at Alexander Street	830,300
SD 0068	128th Ave NE/NE 60th Street To NE 64th St Drainage Imp.	270,300
SD 0070	Juanita Creek Watershed Enhancement Study	50,000
SD 0537	Streambank Stabilization Program – NE 86th Street	640,200
Subtotal Unfunded Surface Water Management Utility Projects		9,469,800
Funding Available from Annual Programs for Candidate Projects		3,505,800
Net Unfunded Surface Water Management Utility Projects		5,964,000

Prior Year(s) Funding (Budget to Actuals):

Project Number	Project Title	Budget	Actual	Balance
SD 0051	Forbes Creek/KC Metro Access Road Culvert Enh.	232,200	88,092	144,108
SD 0053	Forbes Creek/Coors Pond Channel Grade Controls	260,200	84,147	176,053
Total Prior Year(s) Funding (Budget to Actuals):		492,400	172,239	320,161

Notes:

- * = Modification in timing and/or cost (see Project Modification Schedule for greater detail)
- + = Moved from unfunded status to funded status
- " = Moved from funded status to unfunded status
- ^ = Annual Streambank Stabilization Program Project Candidates
- # = Annual Storm Drain Replacement Program Project Candidates
- Shaded year(s) = Previous timing
- Bold italics = New projects