

Highlands Neighborhood Association Meeting

5/18/2022

Ivonne Rivera-Martinez

Community Outreach Specialist
Sound Transit

Joel Pfundt

Transportation Manager
City of Kirkland

Allison Zike, AICP

Senior Planner
City of Kirkland

Jim Laughlin

Transportation Planning Specialist
WSDOT Northwest Region

Diana Giraldo, PE

Design Project Manager
WSDOT I-405/SR 167 Program

David Gerla, PE

Deputy Design Manager
WSDOT I-405/SR 167 Program

Bill Love

Senior Traffic Engineer
WSDOT I-405/SR 167 Program



Agenda

- *Welcome and introductions*
- *Project coordination*
- *Stride Bus Rapid Transit (BRT) overview*
- *Outreach and notifications*
- *Project overview/update*
- *Questions*

Station Area Plan

Station Area Plan

HIGHLANDS

NORTH ROSE HILL

SOUTH ROSE HILL

NORKIRK

EVEREST

NE 85th St. Station Area Plan-City of Kirkland

Bus Rapid Transit Station-Sound Transit

NE 85th St./I-405 Interchange-WSDOT

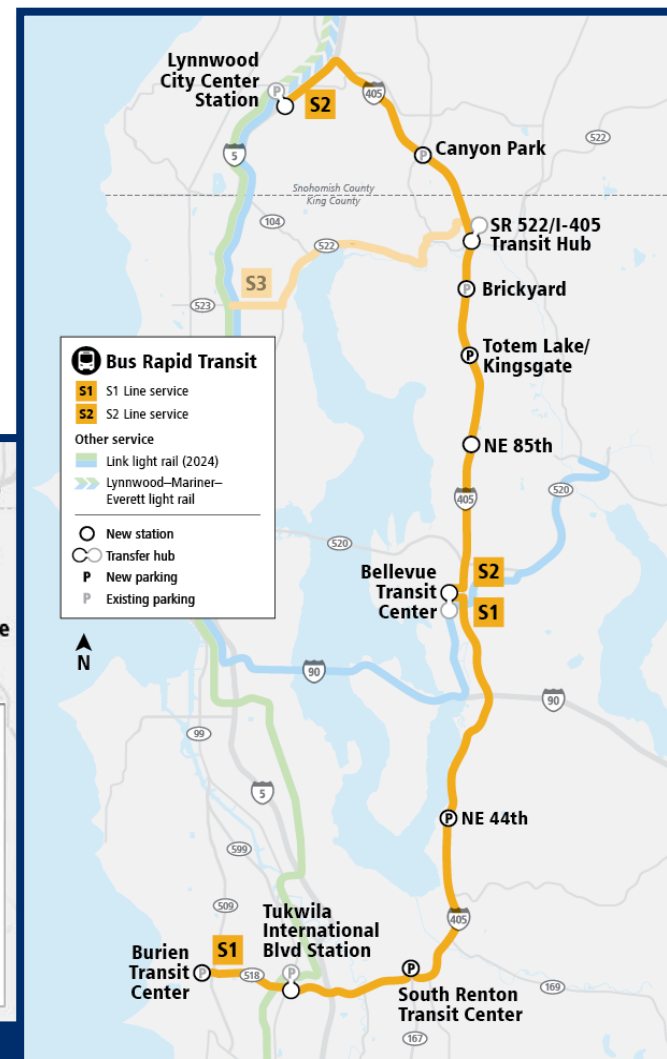
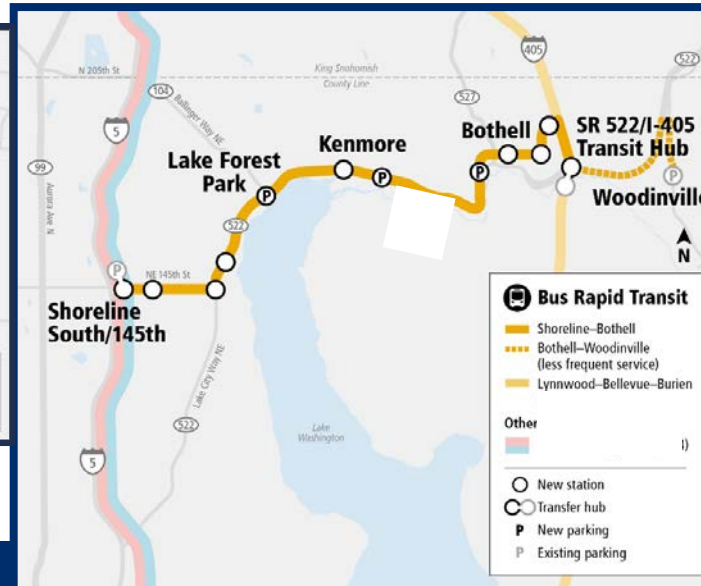
To Downtown Kirkland

To Redmond

BRT: A New Line of Business

Bus Rapid Transit

- Two Corridors
I-405 and SR 522/ NE 145th



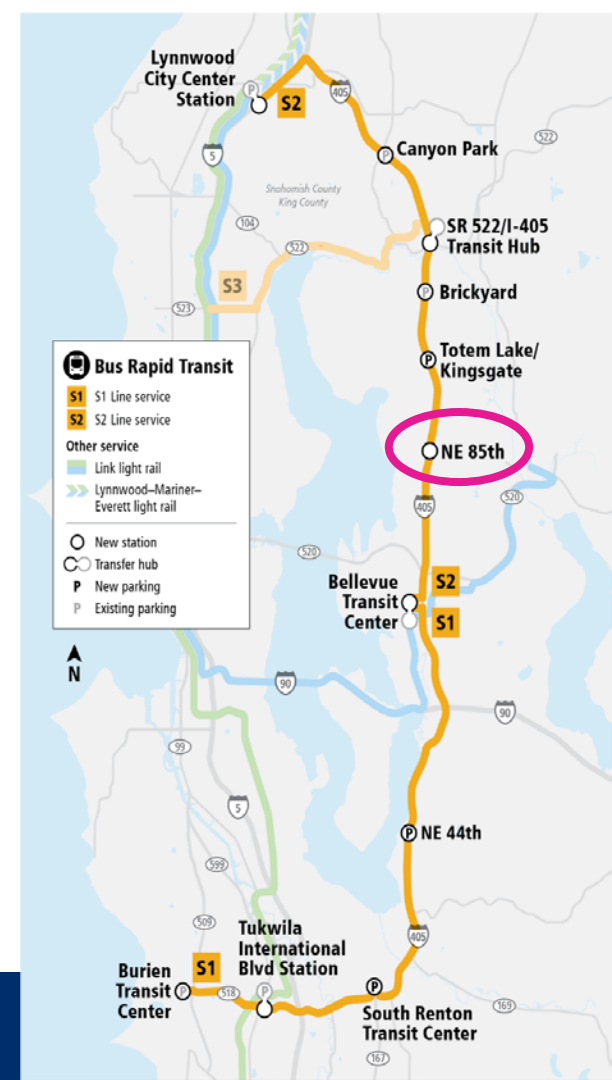
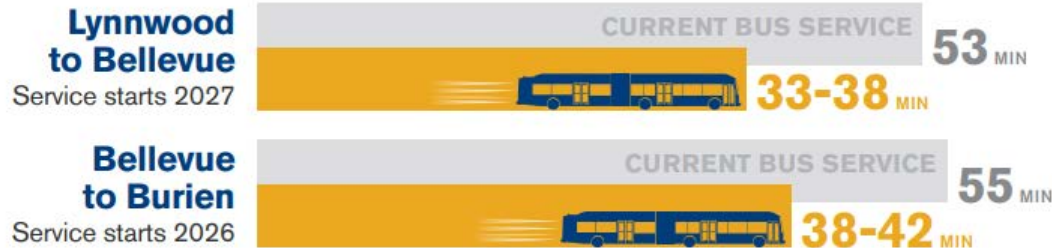
BRT: Branding and Development



STRIDE

NE 85th Interchange

- Inline Station on the S2 Service Line
- Delivered through a partnership with WSDOT
- Station Platforms on Direct Access Ramps
- Funded by Sound Transit



Outreach

2018

- ✓ Kirkland Transportation Commission
- ✓ Kirkland City Council Ad Hoc Committee
- ✓ Kirkland City Council Study Session
- ✓ 4 stakeholder workshops
- ✓ Open house



2019

- ✓ 6 Kirkland neighborhood briefings
- ✓ Kirkland Alliance of Neighborhoods
- ✓ Kirkland Transportation Commission
- ✓ Open house
- ✓ Kirkland City Council Ad Hoc Work Group
- ✓ Kirkland Transportation Commission
- ✓ Kirkland City Council

2020

- ✓ Sound Transit BRT online open house
- ✓ 1 Kirkland neighborhood briefing
- ✓ Kirkland Planning/Transportation Commissions

2021

- ✓ Kirkland City Council

2022

- ✓ Voluntary Submitters Meeting
- ✓ Eastside Transportation Association briefing
- ❑ Voluntary Proposers Meeting

Future outreach and notifications during construction

- Signage
- Flyers
- Briefings
- Regular project update meetings
- Pop-ups
- Website updates



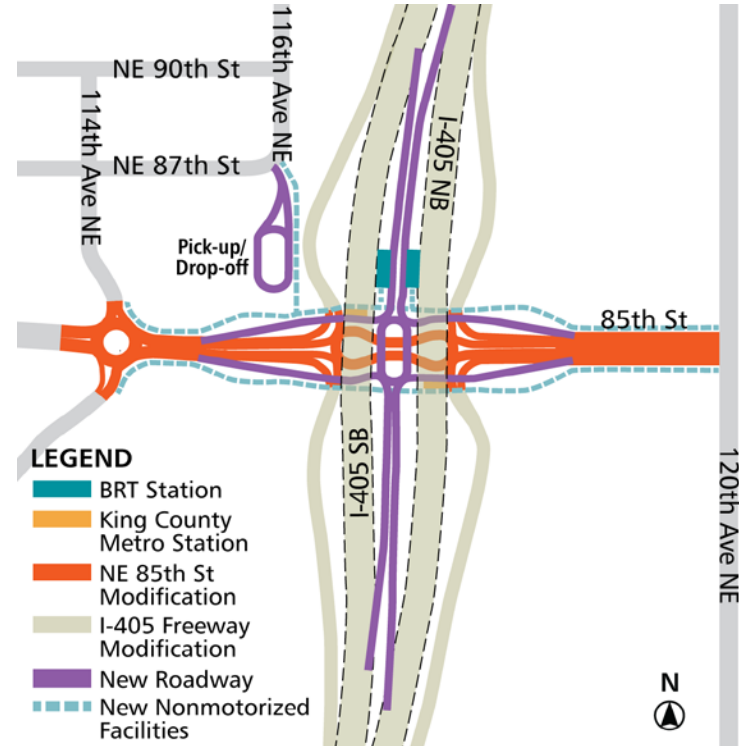
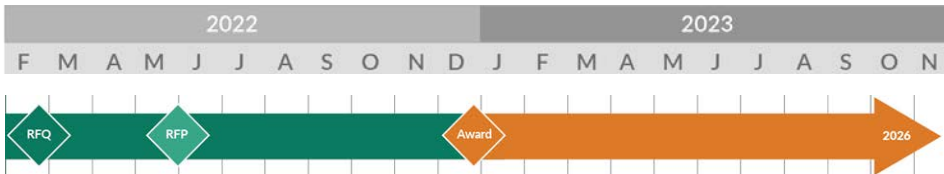
I-405/NE 85th Street Interchange and Inline BRT Station Project

Description:

- Constructs a three-level interchange with BRT station, direct access ramps, and local improvements.
- Builds an inline station to serve Sound Transit's BRT, and rebuilds local bus stops.
- Builds direct access ramps to the I-405 Express Toll Lanes (ETLs).
- Builds pedestrian and bike connections.
- Fully funded by Sound Transit.

Project schedule:

- Construction to begin in Q1 2023
- Open to traffic in summer 2026



Existing conditions: NE 85th Street vicinity

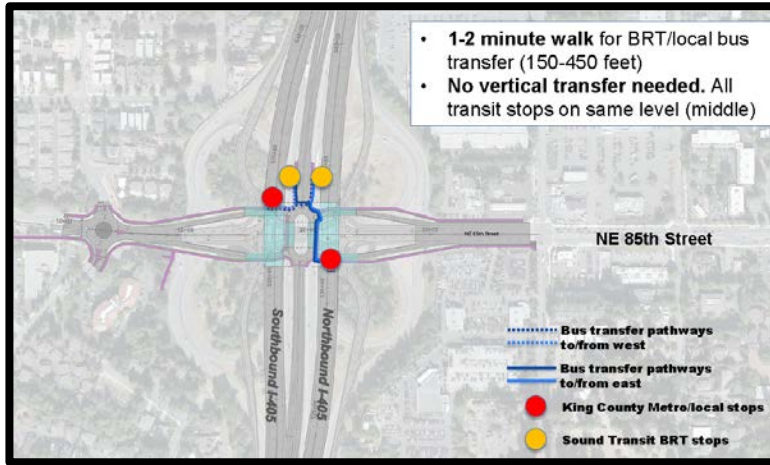


Design concept

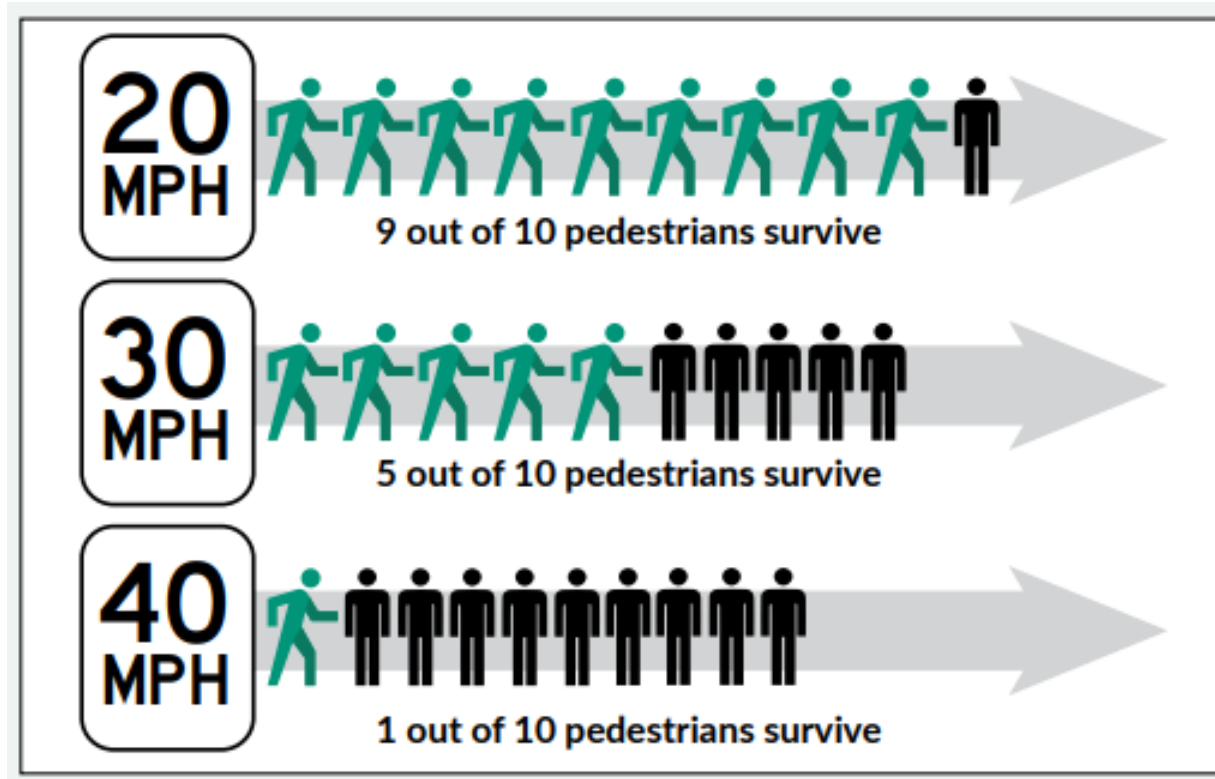


Transit connections

- Both I-405 BRT STRIDE and local King County Metro (KCM) bus stops on same level.
- Convenient transfer environment with no vertical transfer to or from NE 85th Street.
- KCM's Rapid Ride K-Line will include a stop at NE 85th Street.

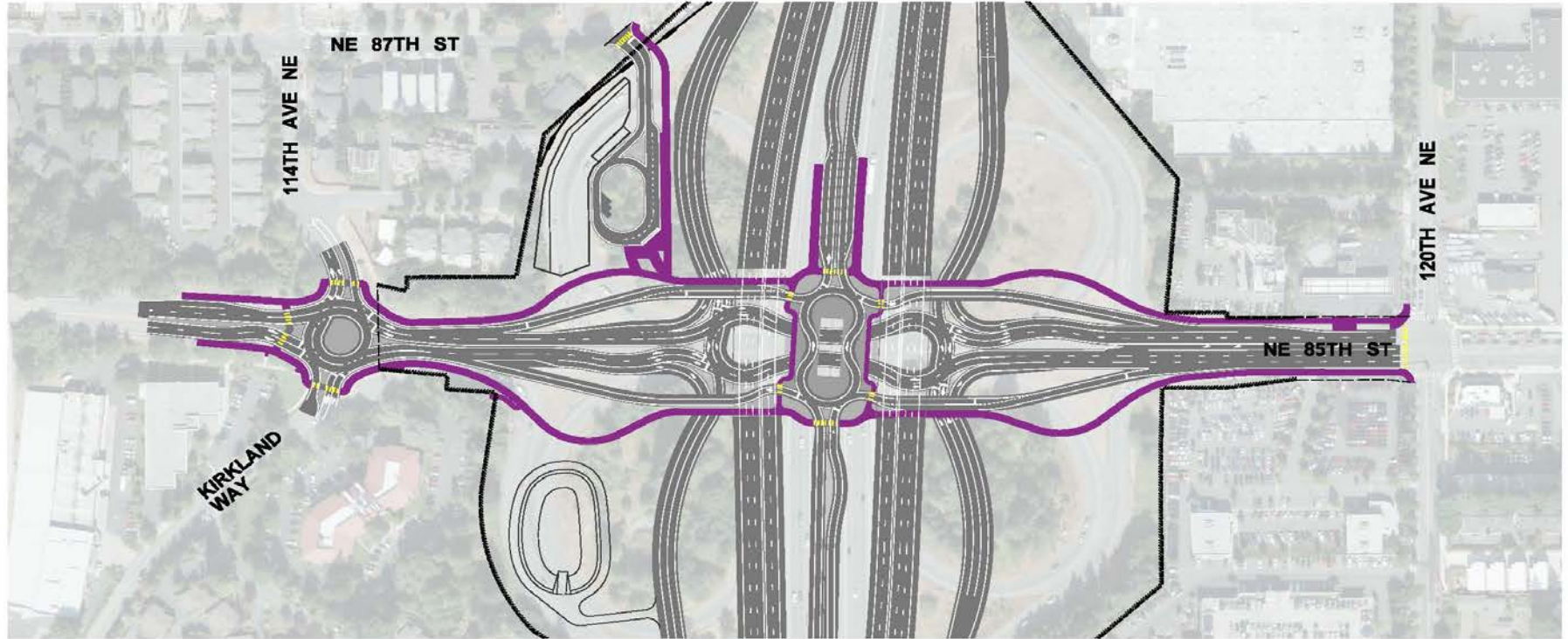


Safety



Source: WSDOT Active Transportation Plan, 2020

Bike/pedestrian facilities

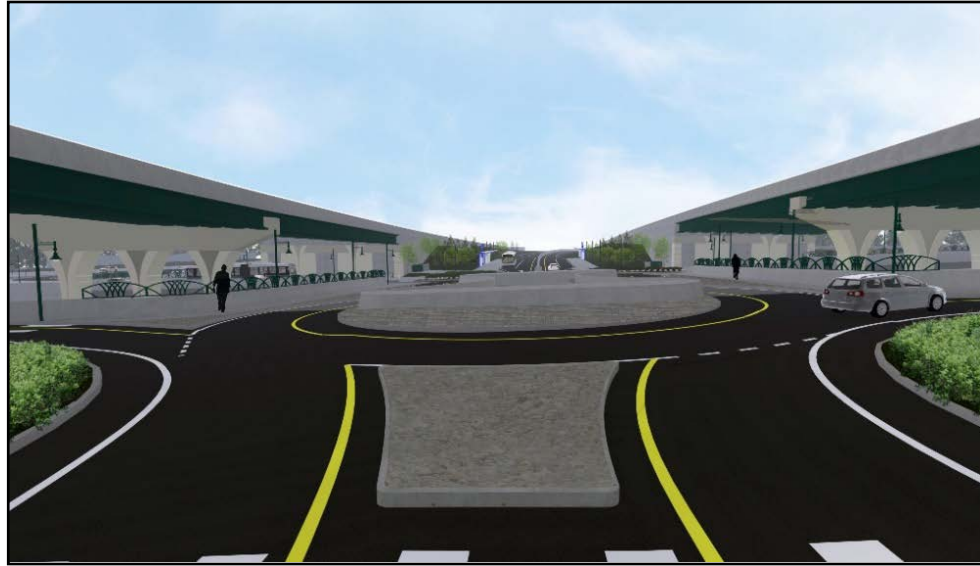




Transit and pedestrian environment



Existing



Proposed

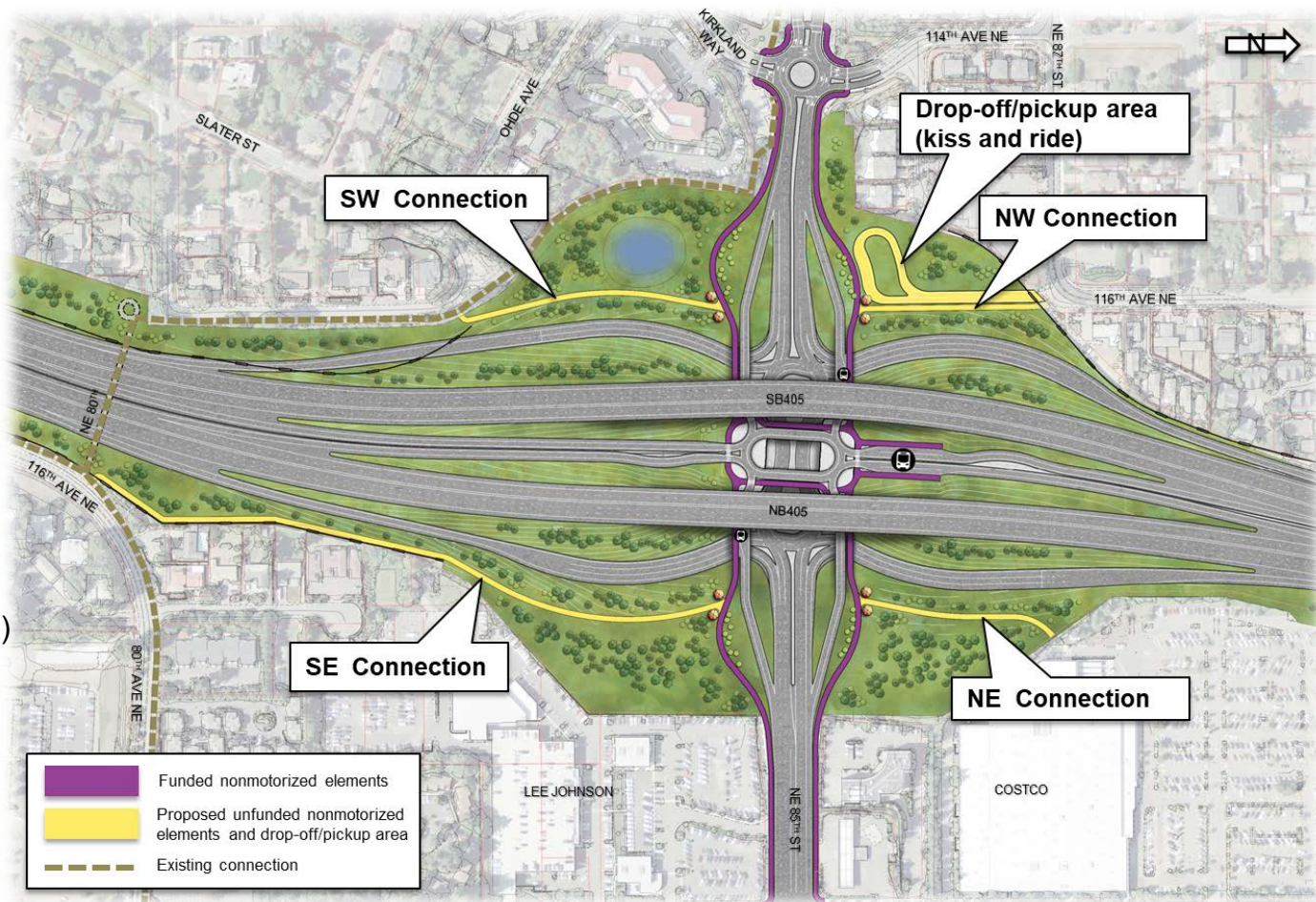
Design-2019

Funded elements:

- Multimodal facility
- Three-level interchange
- BRT station/Local bus stops
- Direct access ramps
- Local improvements
 - Arterial
 - Ped/bike connections (85th)

Unfunded elements:

- 4 quadrant connections
- 1 pickup/drop-off facility



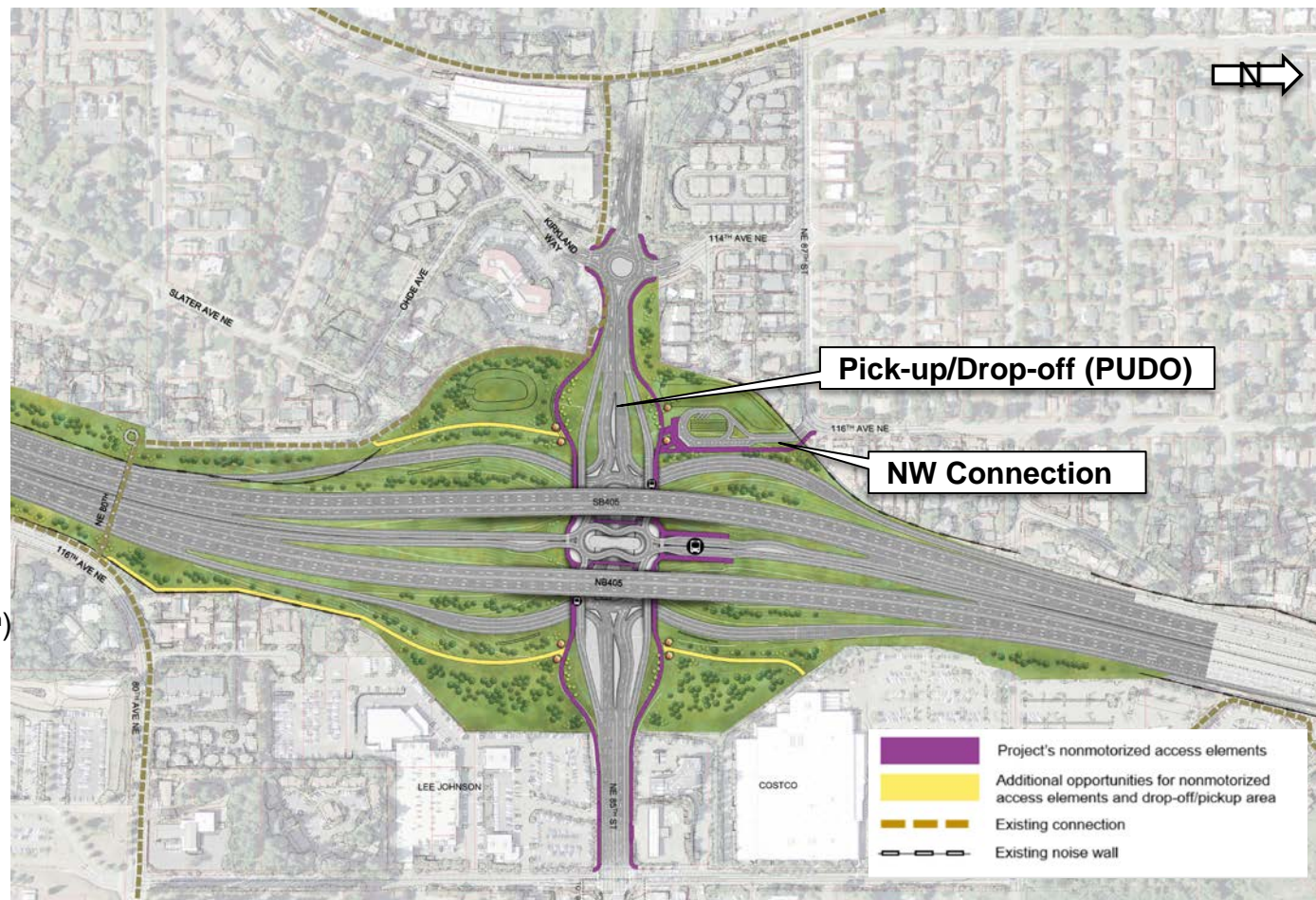
Current Design

Funded elements:

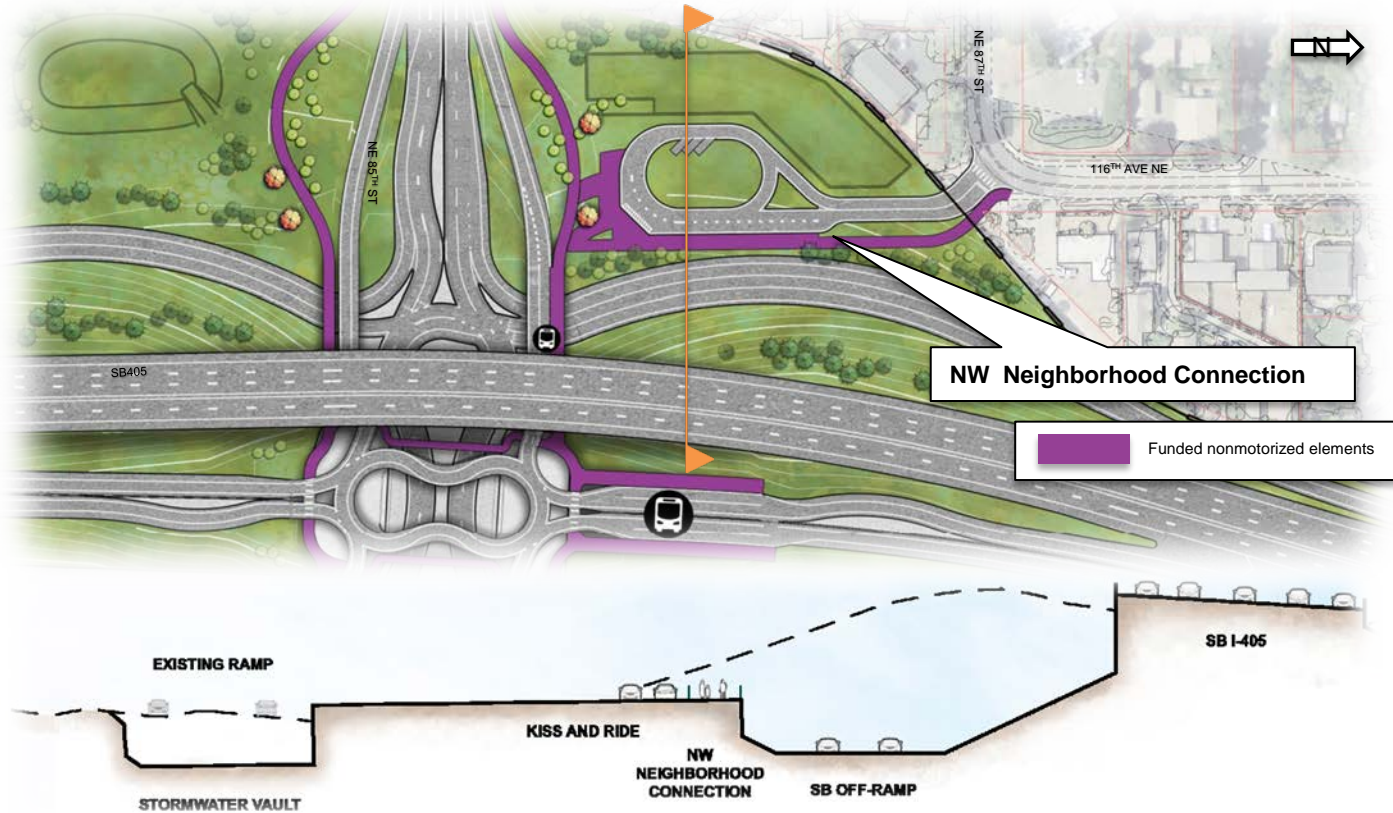
- Multimodal facility
- Three-level interchange
- BRT station/Local bus stops
- Direct access ramps
- Local improvements
 - Arterial
 - Ped/bike connections (85th)
 - 1 quadrant connection (NW)
 - 1 pickup/drop-off facility

Unfunded elements:

- 3 quadrant connections



Northwest neighborhood connection-current



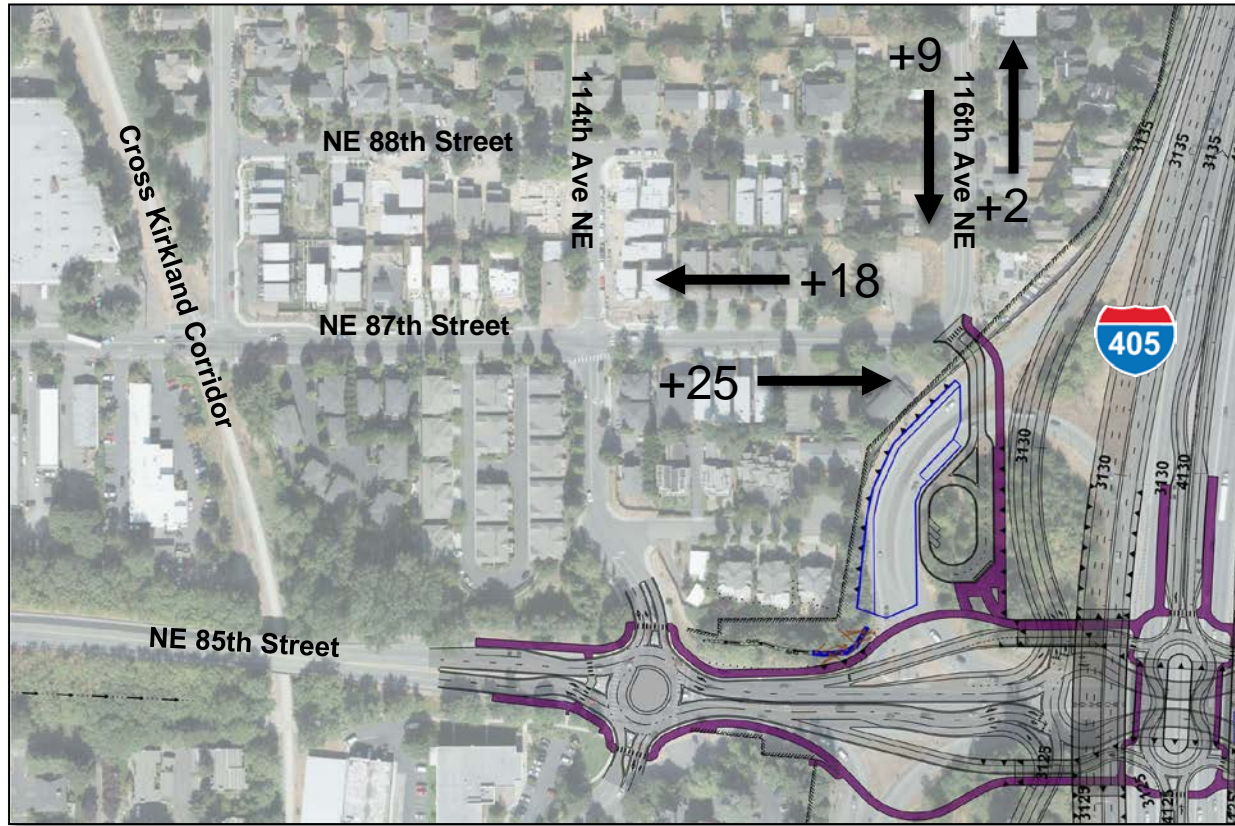
Pickup/drop-off facility (NW quadrant)



- Convenient access to CKC and downtown
- Direct (and shorter) access to bus stops
- A viable connection to NE 85th Street

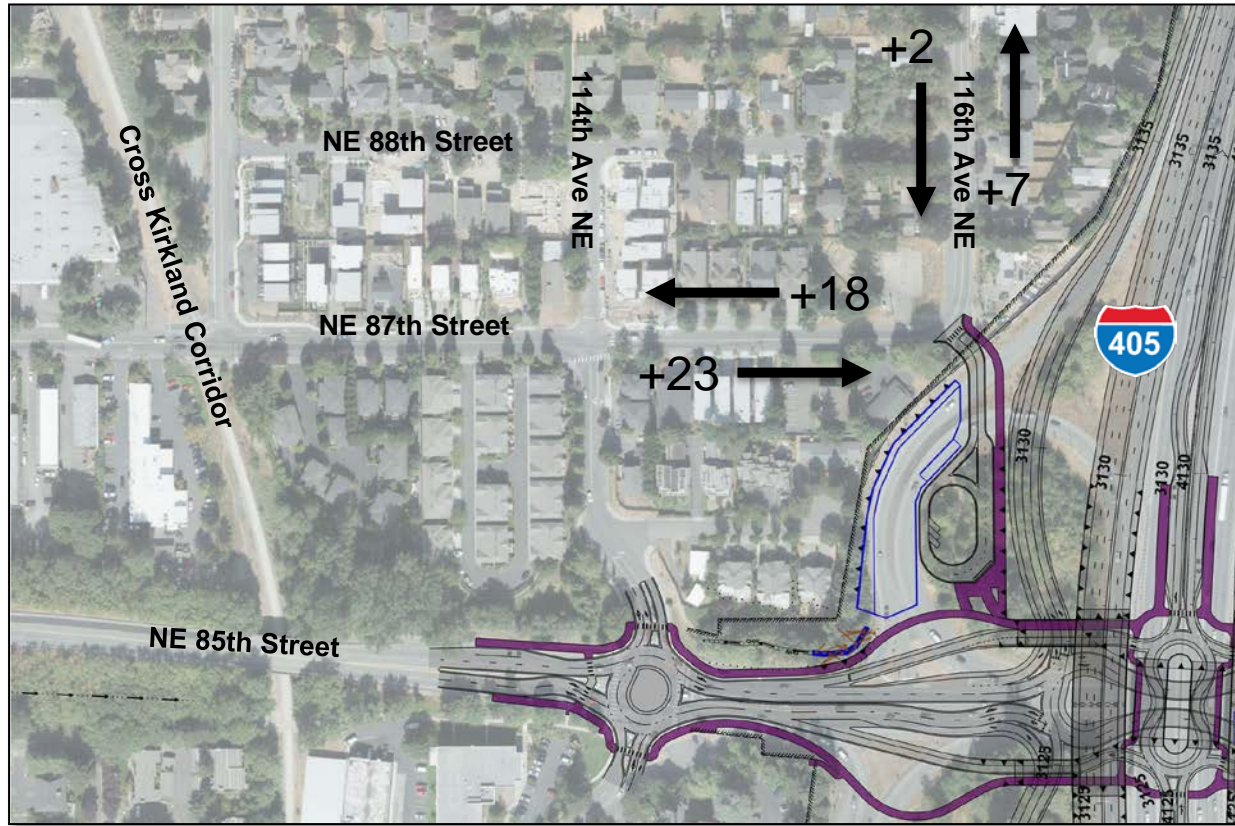
Traffic analysis- 2025 AM peak hour

Additional peak
hour trips due to
the project

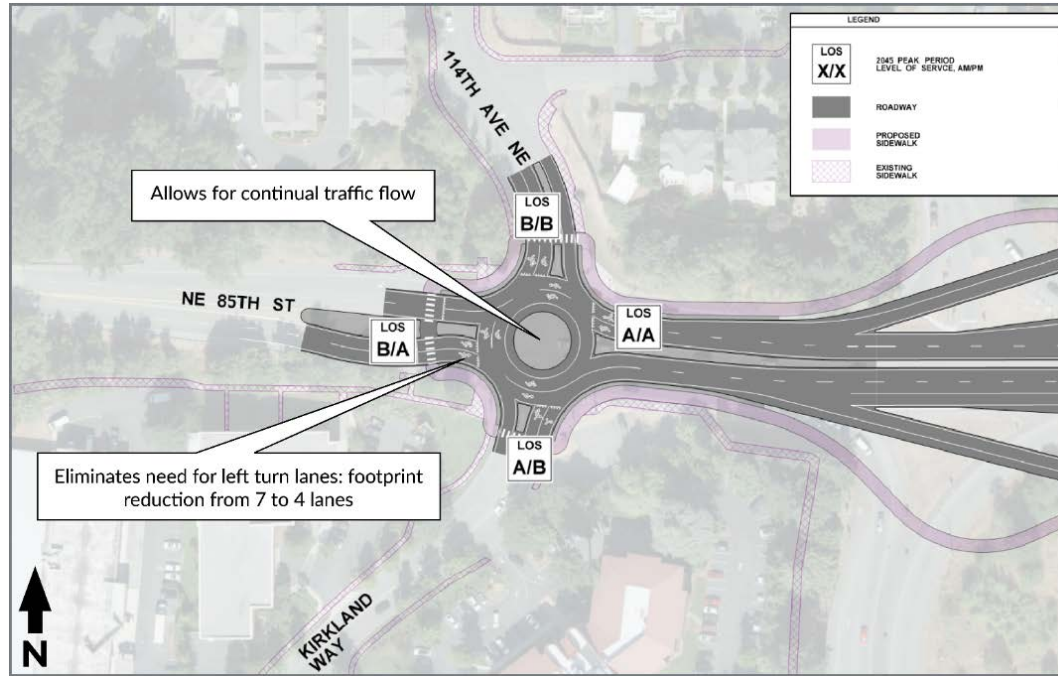


Traffic analysis- 2025 PM peak hour

Additional peak
hour trips due to
the project

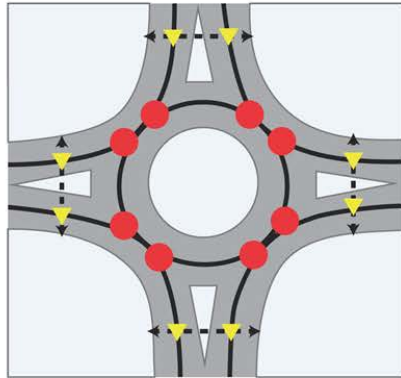


85th/114th roundabout



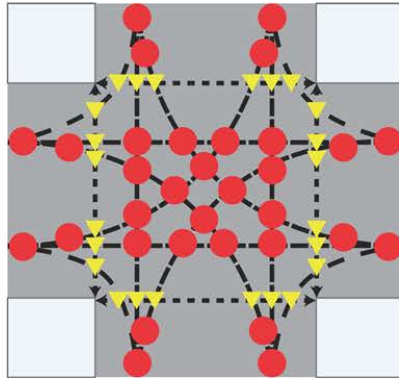
Roundabout benefits

Roundabout



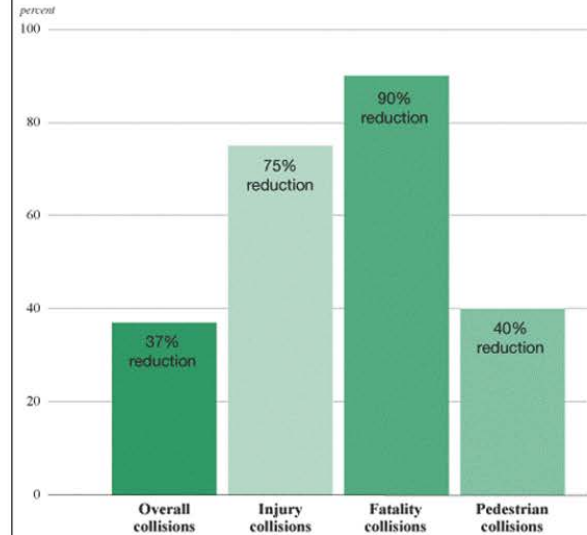
- 8 Vehicle Conflict Points
- ▼ 8 Pedestrian Conflict Points

Intersection



- 32 Vehicle Conflict Points
- ▼ 24 Pedestrian Conflict Points

Reduction in collisions



Source: Federal Highway Administration and Insurance Institute for Highway Safety (FHWA and IIHS)

Noise analysis process

- WSDOT conducts noise analysis following federal regulations from the Federal Highway Administration (FHWA)
- The noise analysis process includes:
 - Measuring current sound levels at different sites
 - Building and testing a noise model to simulate conditions
 - Determining reasonableness/feasibility

Noise analysis results



Noise analysis results

- Noise levels are expected to increase for most of the sensitive receivers but are expected to decrease for some due to the reconfiguration of the interchange
- WSDOT evaluated adding a noise wall in the northwest quadrant, but it did not meet the reasonableness criteria

Design-build process

- What is design-build?
- How is design-build different?
- What are the benefits of design-build?



What to expect during construction

Staging:

- Design-Builder will meet contract requirements
- Design-Builder will closely coordinate with WSDOT, City of Kirkland and public

Closures:

- Lanes will be maintained during daytime hours
- There will likely be some weekend full closures

Noise

- Design-Builder will acquire any permits needed (and provide any mitigation specifics in noise variances)
- Best Management Practices (BMPs) will be followed
 - Truck tailgate banging prohibited
 - Stationary equipment may use temporary noise shields
 - No idling vehicles allowed within and outside project

Conceptual construction staging/sequence

- This is only proof of concept.
- Design-builder to propose construction staging sequence.

Stage 1



Stage 2



Stage 3



Questions?

WSDOT I-405/SR 167 Program

Samantha DeMars-Hanson

Public Information

Project hotline: 425-456-8585

I405SR167Program@wsdot.wa.gov

Sound Transit

Ivonne Rivera-Martinez

I-405 Bus Rapid Transit

206-553-3412

Ivonne.riveramartinez@soundtransit.org

Thank you.

Thank you.



 soundtransit.org

