

Sept. 2019

PROJECT UPDATE



CARING FOR YOUR INFRASTRUCTURE TO KEEP KIRKLAND HEALTHY, SAFE AND VIBRANT

'Gateway' construction begins September

Totem Lake Gateway will complement The Village's plazas and walkways

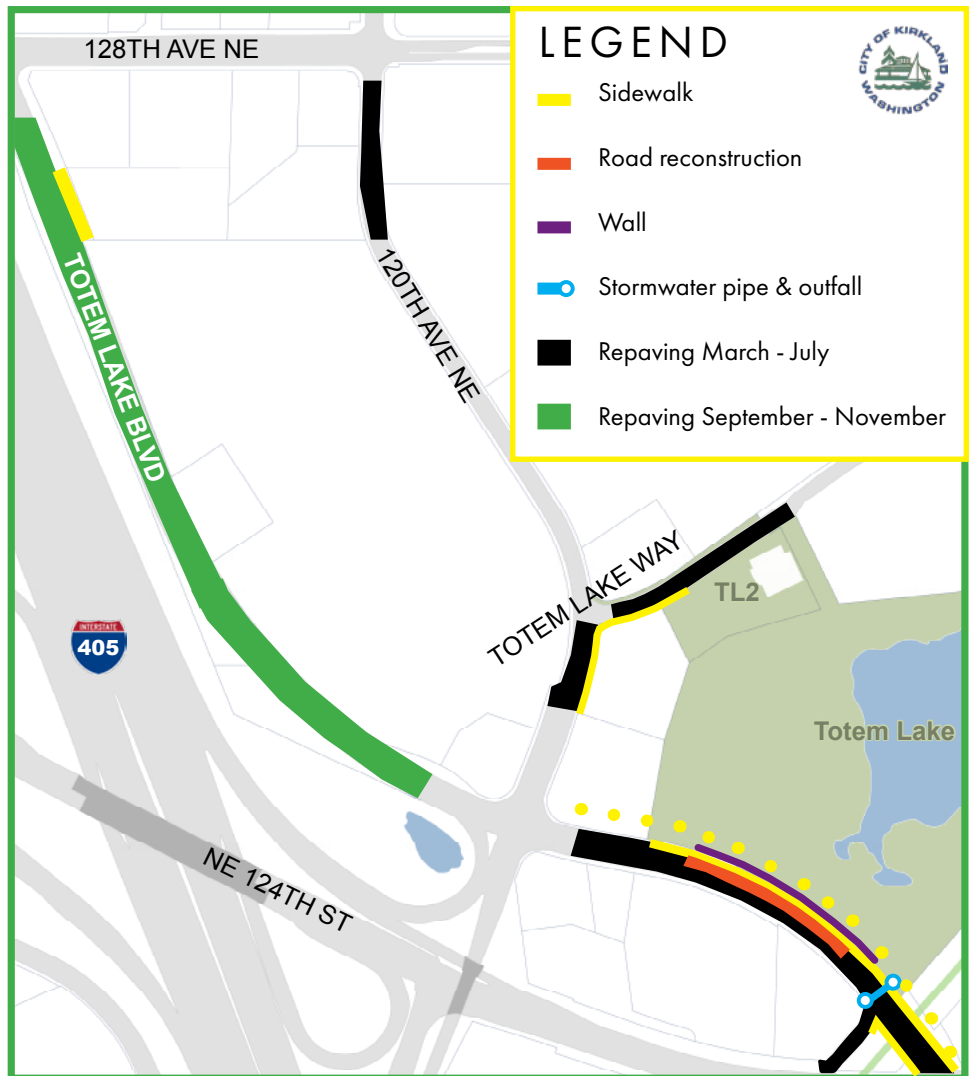
WHAT: Construction begins this month on the first in a series of improvements to Totem Lake Boulevard, Totem Lake Way and 120th Avenue Northeast.

Kirkland's contractor will install a part of a stormwater system that will direct rain water runoff into Totem Lake and away from the roadway near Comfort Inn.

Marshbank Construction will also repave Totem Lake Boulevard between Northeast 128th and 120th avenues northeast.

In the spring, Marshbank Construction will return to Totem Lake to restore sections of Totem Lake Boulevard and to establish wide sidewalks and street lights that complement the Village at Totem Lake's pedestrian plazas and walkways.

The most intensive area of work will be on Totem Lake Boulevard, just south of Totem Lake Park. There, crews will replace the retaining wall, rebuild sections of the roadway, and replace 900 feet of narrow sidewalk with 10-foot-wide sidewalk.



WHEN: Marshbank plans to work nights, from 9 p.m. to 5 a.m. until mid-November and will resume construction in March. This schedule could change. Please refer to the webpage for an updated schedule.

WHAT TO EXPECT: Marshbank plans to stage its construction equipment at several locations near the work zones.

■ The contractor will maintain access for

local residents, mail delivery, garbage pick-up and emergency vehicles.

VISIT: www.kirklandwa.gov/totemlakegateway for updates.

CONTACT: Senior Project Engineer Patrick Herbig, (425) 587-3841, pherbig@kirklandwa.gov; or Senior Outreach Coordinator Christian Knight, cknight@kirklandwa.gov, (425) 587-3831.

People with disabilities may request materials in alternate

formats. Kirkland's policy is to fully comply with Title VI of the Civil Rights Act by prohibiting discrimination against any person on the basis of race, color, national origin or sex in the provision of benefits and services

resulting from its programs and activities. Any person who believes his/her Title VI protection has been violated, may file a complaint with the City. To request an alternate format, file a complaint or for questions about Kirkland's Title VI Program, contact the Title VI Coordinator at 425.587.3831 (TTY Relay: 711) or titleviordinator@kirklandwa.gov.



City of Kirkland
Public Works Department
123 Fifth Avenue
Kirkland, WA 98033-6189

HOW TO REHAB A ROAD



1

REPAIR CURBS
10-15 work days



2

REMOVE UTILITY LIDS
3-7 work days



3

GRIND
1-5 work days

PATCH
5-10 work days

4



5

PAVE
2-5 work days

RE-INSTALL UTILITY LIDS
2-5 work days

6



7

STRIPE
1-3 work days

Cierres de calles

Para solicitar informacion en Español sobre el cierre de calles comuníquese con el Coordinador del Titulo VI, enviando un mensaje a titlevicoordinator@kirklandwa.gov o al número telefónico (425) 587-3831.

道路封闭

如果需要获取简体中文通告，请联系Title VI协调员。电邮：titlevicoordinator@kirklandwa.gov，电话：(425)587-3831。

Закрытие улиц

Чтобы запросить этот документ на русском языке, пожалуйста, свяжитесь со старшим координатором по связям с общественностью Титул VI по адресу titlevicoordinator@kirklandwa.gov, (425) 587-3831.

Magazine, website chronicle Totem Lake's past, present and future development

The transformation of Totem Lake throughout the last two years has been dramatic.

But it's not yet done. Private developers and the City of Kirkland are planning to build more than a dozen other projects in the near future that will further manifest Kirkland's vision for a walkable, vibrant and green urban center. To chronicle progress toward that that vision, the City of Kirkland created a

magazine and a website.

A primary component of both is a map that describes the land use of each of Totem Lake's five subareas and the improvements planned—already in construction—in those subareas.

To view an electronic version of the magazine and to visit the website, go to www.kirklandwa.gov/totemlake.

To order a printed copy of the magazine, contact Jin Muse, (425) 587-3811; jmuse@kirklandwa.gov

