

Rose Hill

SEC. 9 , T. 25 N, R. 5 E, W.M.

- Sidewalk
- Curb/Buffer
- Planter Strip
- Property Lines



TL# 042505-9017

12830
TL# 042505-9023

EX. ROW

Proposed Trees

NE 80TH ST.

STA: 2+96
(CENTER IN PLANTER STRIP)

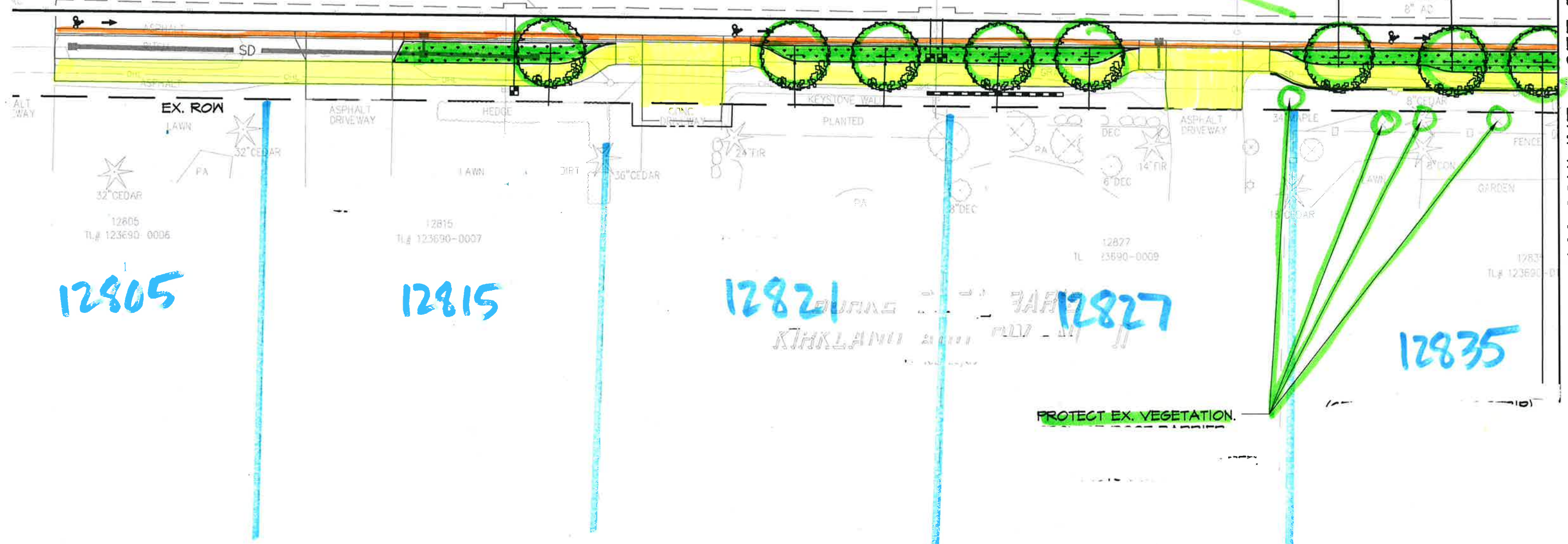
STA: 3+21
(CENTER IN PLANTER STRIP)

6+00

5+00

4+00

3+00



MATCHLINE - SEE BELOW

12805

12815

12821

12827

12835

PROTECT EX. VEGETATION.

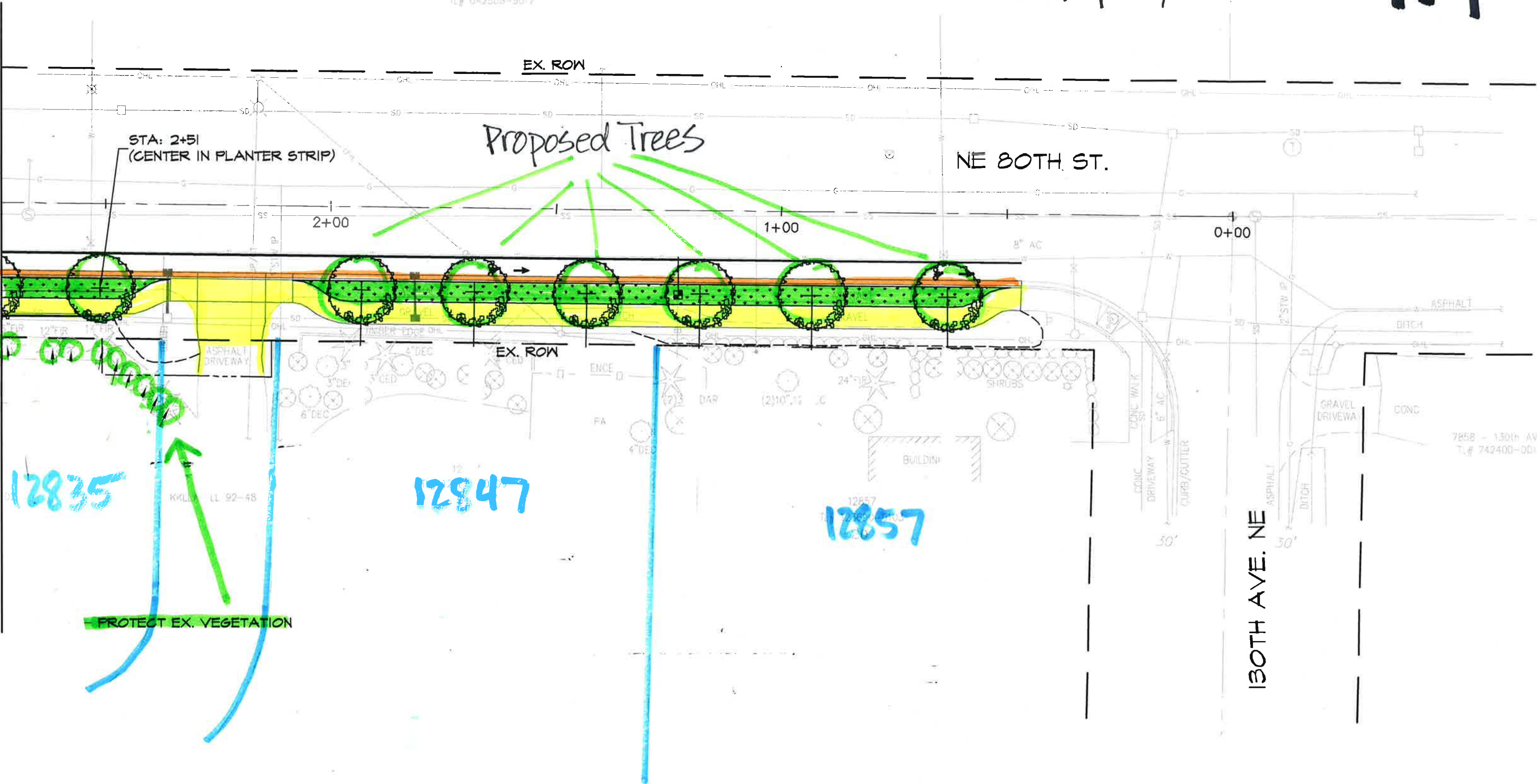
Rose Hill

TL# 042505-9017

-  Sidewalk
-  Curb/Gutter
-  Planter Strip
-  Property Lines



MATCHLINE - SEE ABOVE



Proposed Trees

NE BOTH ST.

STA: 2+51
(CENTER IN PLANTER STRIP)

2+00

1+00

0+00

12835

12847

12857

PROTECT EX. VEGETATION

130TH AVE. NE

7858 - 130th Ave
TL# 742400-001