



Project Notice: NE 68th Street and 108th Avenue NE Intersection Improvements

April 20, 2011



NE 68th Street and 108th Avenue NE



- **Increase intersection efficiency**
- **Improve pedestrian and bicycle safety**
- **Upgrade capacity and sustainability of infrastructure**

Thank you in advance for your patience and cooperation as we make improvements to this important intersection.

What: The City of Kirkland is pleased to report that the design is now complete and advertisement for contractor bids will occur in the next couple of weeks for the intersection improvements at NE 68th Street and 108th Avenue NE. The planned improvements will reduce congestion by installing a new westbound to northbound right turn lane on 68th Street and modify turning radiuses at all corners of the intersection to improve right turn movements. In addition, sidewalk and curb enhancements will be made at all four corners of the intersection to improve pedestrian safety and safe school walk route (please see diagram on back). The project funding is a combination of City transportation and surface water funds, and a Sound Transit contribution.

Why: The Project will improve the efficiency of the intersection to reduce congestion experienced during peak travel times. Widening the sidewalk and improving crosswalk amenities will enhance the safety for pedestrians and improve the safe school walk route. The turning radius for buses and larger vehicles will be improved with the modifications at the corners of the intersections.

When: The first phase of construction includes the removal of the large cedar tree for the relocation of Puget Sound Energy power poles adjacent to the intersection. The tree is scheduled to be removed in late April with the relocation of the power poles anticipated by mid June. The second phase of construction includes the intersection and signal improvements and is scheduled to begin this summer and is expected to be complete by the end of the year. Once the construction contract has been awarded for the second phase, more information will be provided to adjacent properties.



Tree to be removed
(north side of NE 68th Street behind 7-11)

What to Expect: The following is an outline of basic construction practices:

Advanced notice of parking restrictions and utility shutdowns:

- Adjacent properties will be notified well in advance of utility shutdowns, if any.
- No-parking signs will be posted 24 hours in advance of all parking restrictions.
- Traffic control and flagging operations will be in effect.
- Emergency vehicle access will be maintained throughout the construction process.
- The contractor is required to backfill and/or cover their work at the end of each day so there will be no open trenches left over night.
- Garbage/recycling pick-up locations and schedules will remain the same unless special notification is issued by the contractor.
- The contractor will be coordinating with the postal service so mail delivery is not impacted.

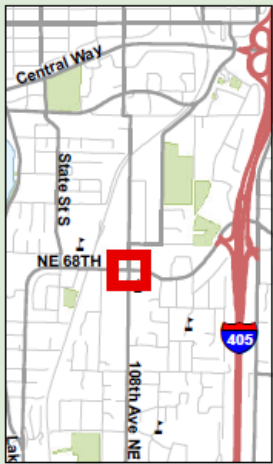
Easy access to information:

- Obtain current information: go to www.kirklandwa.gov and search NE 68 St.
- Call the construction hotline for updates: (425) 587-3838.
- Contact us with questions or comments (see below).

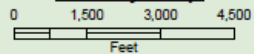
How You Can Help: Once again, thank you in advance for your patience and cooperation as we make improvements to this important intersection. We will continue to keep you updated as the project progresses.

Project Engineer: Denise Pirolo, P.E., (425) 587-3830 DPirolo@kirklandwa.gov

Outreach Coordinator: Kari Page, (425) 587-3011 KPage@kirklandwa.gov



Vicinity Map

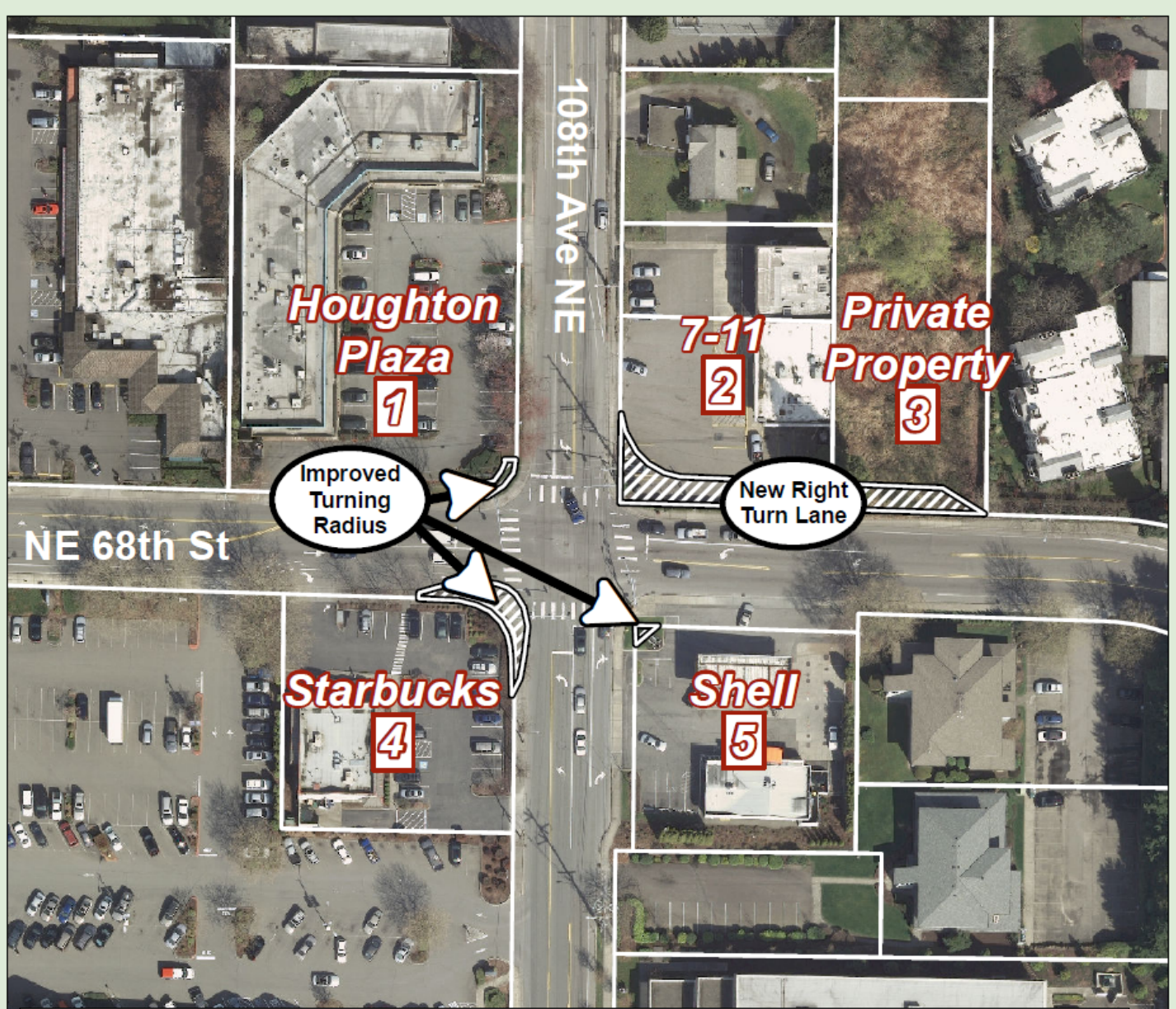


Legend

Map Reference Number



Produced by the City of Kirkland.
© 2011, the City of Kirkland, all rights reserved.
No warranties of any sort, including but not limited to accuracy, fitness or merchantability, accompany this product.



NE 68th St / 108th Ave NE Intersection Improvement Project