



Project Update: Sidewalk Construction to Begin 12th Avenue Sidewalk Improvement Project

June
2011



Planning

Design

Construction

Complete

- **Create Safe School Walk Route**
- **Provide Continuous Sidewalk Facilities**
- **Enhance the Pedestrian Experience**

Thank you in advance for your patience and cooperation as we make enhancements to your neighborhood.

June 16, 2011 Update: The City of Kirkland is pleased to announce that a contract has been awarded to Reed Trucking and Excavating of Puyallup, WA to construct a sidewalk along the north side of 12th Avenue from 6th Street to the back entrance of Peter Kirk Elementary School on 110th Avenue NE.

What: This Project will construct approximately 1,050 linear feet of curb, gutter and sidewalk with a planter strip along the north side of 12th Avenue from 6th Street to the back entrance of Peter Kirk Elementary School on 110th Avenue. The sidewalk will capitalize on areas where sidewalk has already been constructed with prior development. The concrete sidewalk will be 5 feet wide and will be separated from the edge of the travel lane by a 4.5 foot planter strip and 0.5 foot wide concrete curb (totaling 5 feet) in most places. The Project also includes a boardwalk and pervious concrete sidewalks around the wetland located at the east end of 12th Avenue.

Why: The Project focuses on pedestrian safety by providing children a safe, healthy alternative to riding the bus or being driven to school. The Project will help close a gap in the pedestrian facilities linking the neighborhood to the Peter Kirk Elementary School.

When: Construction is anticipated to begin in late June and be substantially complete before school starts in 2011. Typical hours of operation are Monday-Friday 7:00am to 6:00pm.

What to Expect:

Advanced notice of parking restrictions and utility shutdowns:

- Adjacent properties will be notified well in advance of utility shutdowns, if any.
- No-parking signs will be posted 24 hours in advance of all parking restrictions.
- Traffic control and flagging operations will be in effect.
- Emergency vehicle access will be maintained throughout the construction process.
- The contractor is required to backfill and/or cover their work at the end of each day so there will be no open trenches left over night.
- Garbage/recycling pick-up locations and schedules will remain the same unless special notification is issued by the contractor.
- The contractor will be coordinating with the postal service so mail delivery is not impacted.

Easy access to information:

- Obtain current information: go to www.kirklandwa.gov and search 12th Ave Sidewalk
- Call the construction hotline for updates: (425) 587-3838.
- Contact us with questions or comments (see below).

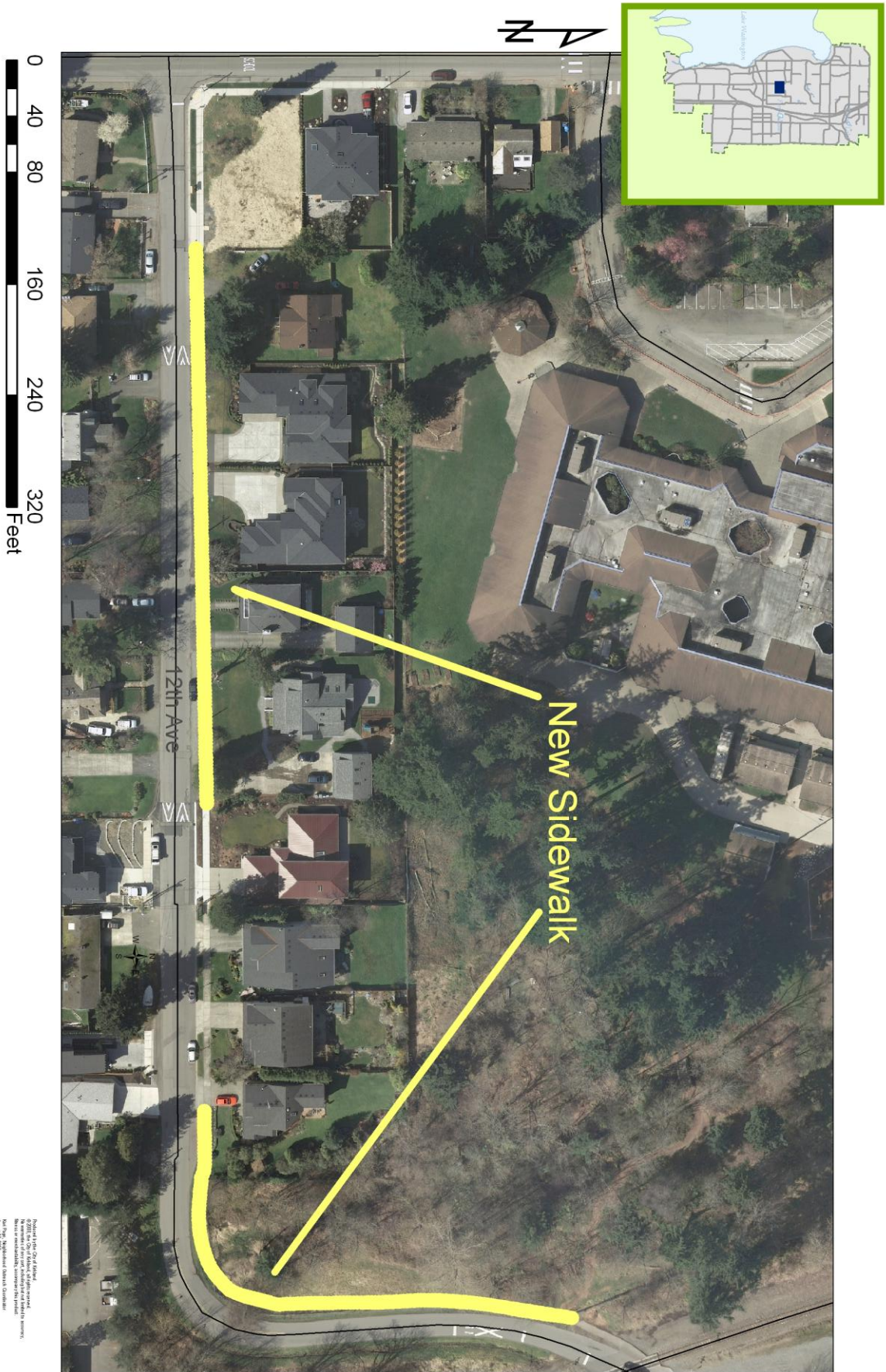
Project Engineer: Aaron McDonald, P.E., (425) 587-3837 AMcDonald@kirklandwa.gov
Outreach Coordinator: Kari Page, (425) 587-3011 KPage@kirklandwa.gov

Once again, thank you in advance for your patience and cooperation as we make improvements to this school walk route.



Project Update: Sidewalk Construction to Begin 12th Avenue Sidewalk Improvement Project

June
2011



Produced by the City of Kirkland
 © 2011. All rights reserved. No warranty is made
 by the City of Kirkland for the accuracy of the
 data or the results of the project. The project
 was prepared by the City of Kirkland.
 All other marks are the property of their respective
 owners.