



Project Update: Construction to Begin Elementary School Walk Route Enhancement

Project Update

June 2011



- **Safe School Walk Routes**
- **Continuous Sidewalk Facilities**
- **Pedestrian Safety Education**

Thank you in advance for your patience and cooperation as we make enhancements to your neighborhood.

Project Overview: The City is pleased to announce the contract has been awarded to Pellco Construction Inc. to construct a sidewalk on the east side of 110th Avenue NE; from NE 116th Street leading into the back entrance of Alexander Graham Bell Elementary School.

The Project will construct sidewalk, curb and gutter and make storm drainage improvements. The City was awarded a State grant to construct seven walk route enhancements at seven locations near Lake Washington School District Elementary Schools. For more information on the other sidewalk locations go to the web site listed below. Education and enforcement along School Walk Routes are also part of the grant.

Why: The Project focuses on pedestrian safety by providing children a safe alternative to riding the bus or being driven to school. These projects will help close the gap in the pedestrian facilities linking neighborhoods to their elementary schools.

When: Below is a series of tentative milestones provided to the City by the Contractor for the sidewalk on 110th Avenue NE. Many factors, including weather could influence the schedule and actual days work is being done. The City will update adjacent residents on any substantial changes to this tentative schedule. Updates will also be posted on the Project web site listed at the end of this notice. Adjacent residents will also receive a specific notice in advance of any interruptions to their driveway access.

- Late June: Removal of trees.
- Early July: Removal of obstructions (plantings, walls, boulders, etc.) , saw cutting, excavating, and adjusting catch basins/utilities.
- Mid July: Installation of the concrete curb, gutter and sidewalk.
- Late July: Restoration, asphalt paving and cleanup.
- August: Substantial completion of work.

To receive updates via email on City and Neighborhood news, subscribe to the Neighborhood E-Bulletin at <http://www.kirklandwa.gov/ebulletins.htm>

What to Expect: The City recognizes the inconveniences caused by construction on neighborhood streets and is committed to being a good neighbor throughout the construction process. Being a good neighbor includes keeping adjacent residents informed, striving to minimizing impacts, and providing avenues for input and feedback.

Informing:

Project Updates: The schedule provided in this Project Update is tentative. Adjacent residents will receive notice of substantial changes to this schedule.

Parking: In order to complete the Project as efficiently as possible, the contractor will be restricting parking along the construction area. No-parking signs will be posted 24 hours in advance of all parking restrictions.

Driveway access: In some locations, it may be necessary to limit driveway access for up to a week while fresh concrete is allowed to cure. Advance notice will be provided prior to restricting access to driveways.

Construction Staging: The contractor may be parking equipment and storing materials overnight on the streets adjacent to the Project area. Should problems arise, please contact one of the individuals listed below.

Construction Hotline: Call the construction hotline for updates: (425) 587-3838.

Web Site: Obtain current information at the Project web site: go to <http://www.kirklandwa.gov> and search Elementary School Walk.

Mimimizing impacts:

Emergency vehicle access: Access for emergency vehicles will be maintained throughout the construction process.

Traffic control: There may be inconvenience associated with driving through the work zone; traffic control and flagging operations will be in effect.

Work hours: A typical work day consists of eight hours between 7:00am and 6:00pm (Monday thru Friday).

After hours: The contractor is required to backfill and/or cover their work at the end of each day so there will be no open trenches left over night.

Garbage/recycle/yard waste service: Garbage/recycling pick-up locations and schedules will remain the same unless notified by the contractor.

Mail service: The contractor will be coordinating with the postal service so mail delivery is not impacted.

How to help: Ensuring the construction area is not obstructed with vehicles or other items helps the contractor move efficiently. Please adhere to “no parking” signs.

Proving input:

Contact any of these individuals with questions and/or comments.

Denise Pirolo, PE

Project Engineer

(425) 587-3830

dpirolo@kirklandwa.gov

Kari Page

Neighborhood Outreach Coordinator

(425) 587-3011

kpage@kirklandwa.gov

Bill Reynolds

Project Inspector

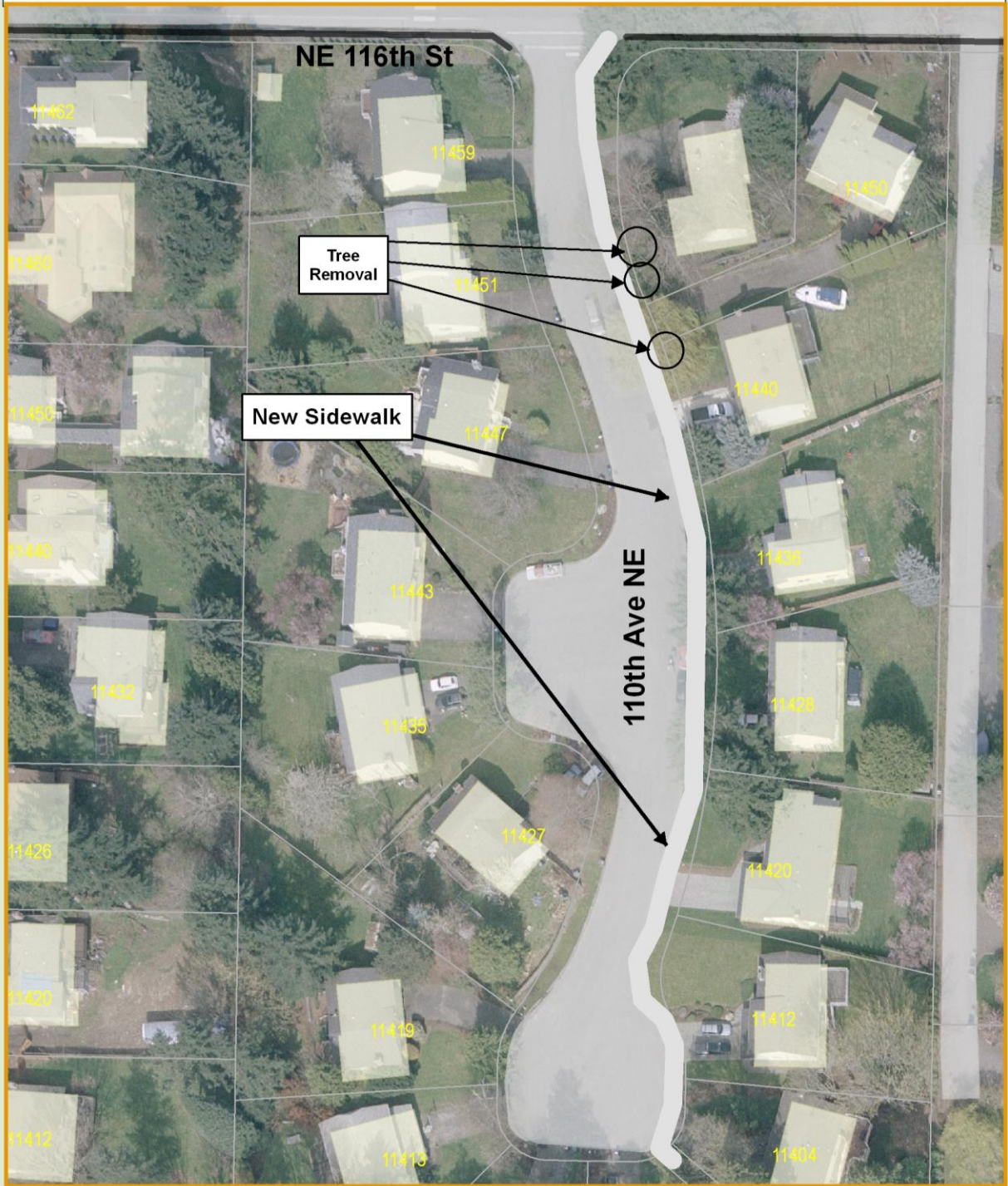
(206) 321-1109

Submit a question or comment online at www.kirklandwa.gov and search CIP Question.

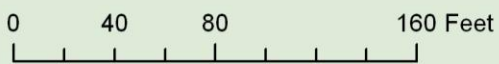
To receive updates via email on City and Neighborhood news, subscribe to the Neighborhood E-Bulletin at

<http://www.kirklandwa.gov/ebulletins.htm>

Alexander Graham Bell Elementary School Safe Walk Route Enhancement



Map Legend	
	Existing Sidewalk or Path
	Tax Parcel Boundary
	Park
	School



Produced by the City of Kirkland.
© 2009, the City of Kirkland, all rights reserved.
No warranties of any sort, including but not limited to accuracy, fitness or merchantability, accompany this product.

-Location: \\SRV-FILE01\Data\Pw\CIP_group\Project Files\WMCNM0067 Elementary School Walk Route Enhancements\CORR\Resident\Project Overview.mxd

To receive updates via email on City and Neighborhood news, subscribe to the Neighborhood E-Bulletin at <http://www.kirklandwa.gov/ebulletins.htm>

To receive updates via email on City and Neighborhood news, subscribe to the Neighborhood E-Bulletin at
<http://www.kirklandwa.gov/ebulletins.htm>