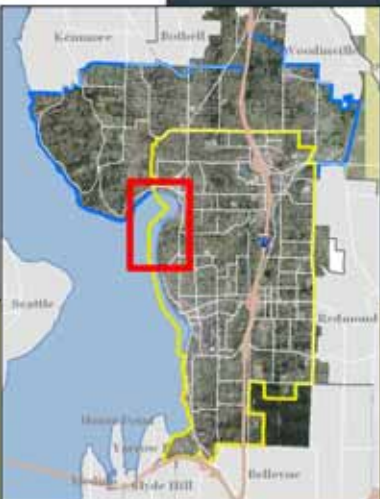




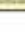

  
 0 250 500 Feet
   
 Scale 1" = 500'
   
 NOTE: In the event of a mapping error or ambiguity, the common boundary descriptions and criteria contained in RCW 90.58.030 (2) and Chapter 173-22 WAC pertaining to determinations of shorelands, as amended, shall apply, superseding the incorrect or outdated map.



**Proposed Shoreline Environment Designations**  
 Shoreline Master Program - City of Kirkland

-  UC Urban Conservancy
-  R-MH Residential - Medium High
-  R-L Residential - Low
-  N Natural
-  R-ASH Residential - Ash

 Aquatic  
 Shoreline Management Area



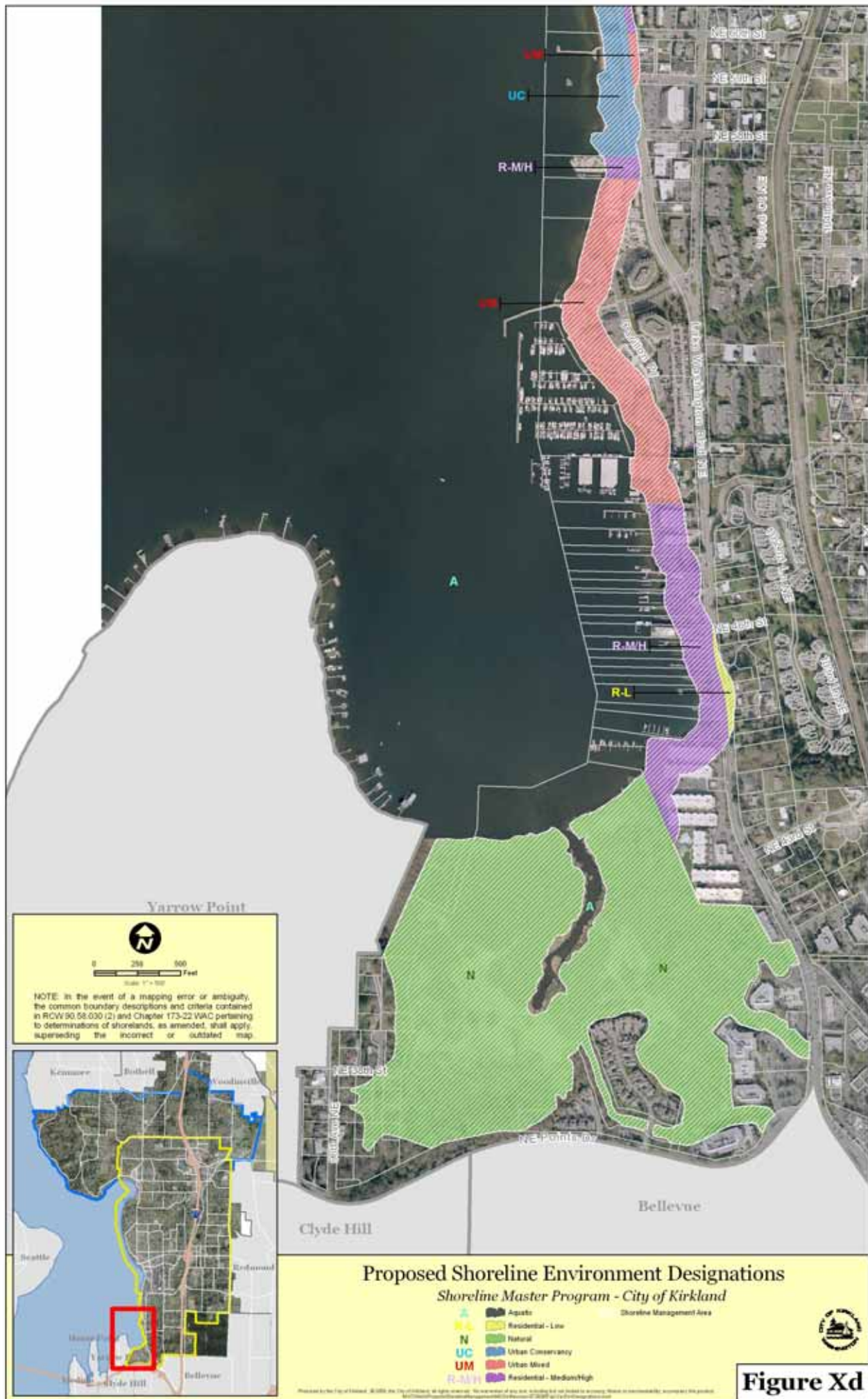
**Figure Xa**

Prepared by the City of Kirkland. © 2018. All rights reserved. The information on this map is intended for informational purposes only and does not constitute a warranty, representation, or guarantee of any kind. The City of Kirkland is not responsible for any errors or omissions on this map.



**Figure Xb**





**Figure Xd**